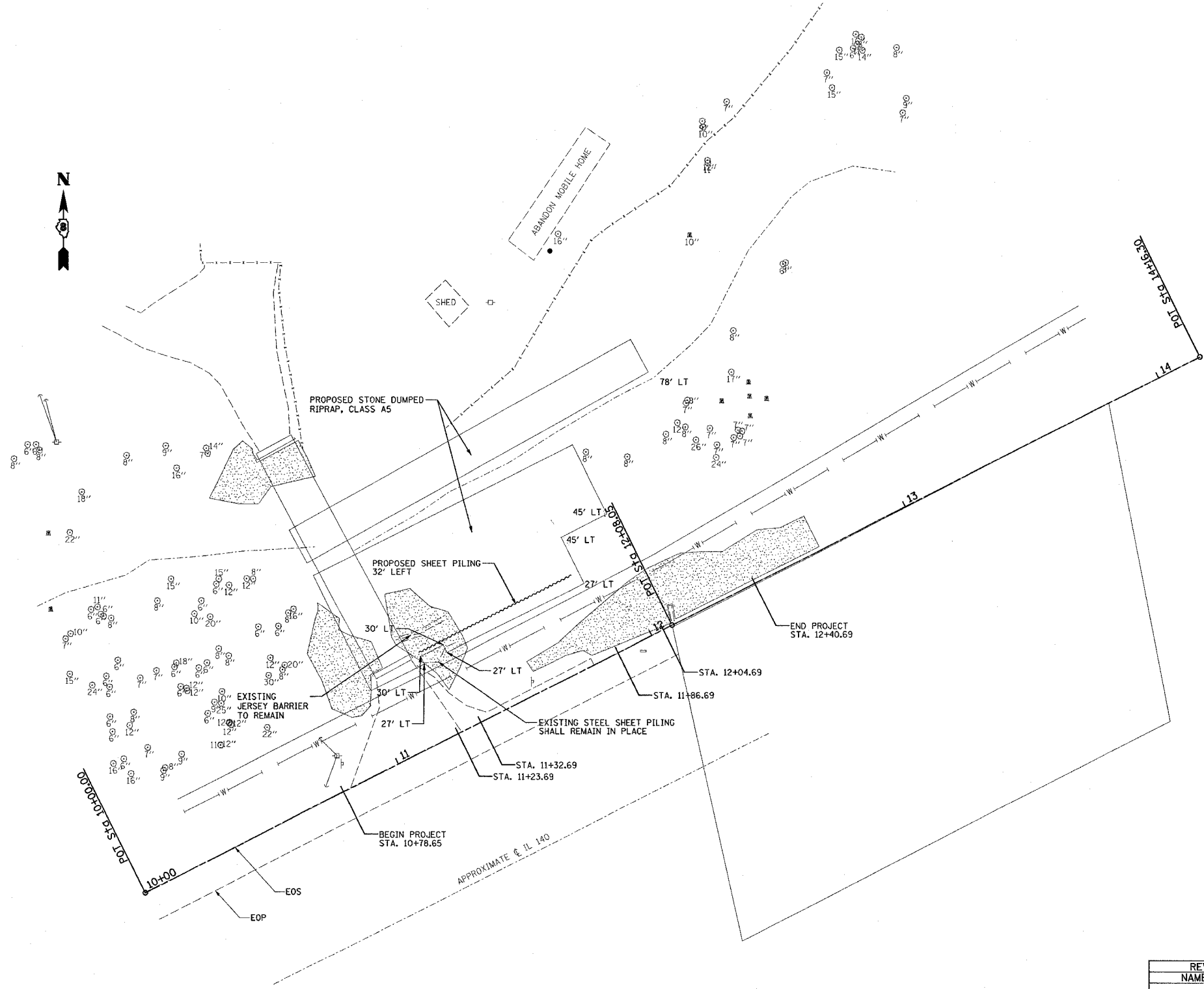


F.A.P. RTE.	SECTION	COUNTY	TOTAL SHEETS	SHEET NO.
785	132-31-1	MADISON	14	5
STA.		TO STA.		
FED. ROAD DIST. NO.		ILLINOIS FED. AID PROJECT		



REVISIONS	
NAME	DATE

ILLINOIS DEPARTMENT OF TRANSPORTATION

**PROPOSED
PLAN VIEW**
FAP ROUTE 785
SECTION 132-31-1
MADISON COUNTY

PLOT DATE = 9/5/2008
 PLOT SCALE = 20.0000" / IN.
 REFERENCE = *REF*