

F.A.P. RTE.	SECTION	COUNTY	TOTAL SHEETS	SHEET NO.
785	132-3I-1	MADISON	14	1

-2  
12

STATE OF ILLINOIS  
DEPARTMENT OF TRANSPORTATION  
DIVISION OF HIGHWAYS

**PROPOSED  
HIGHWAY PLANS**

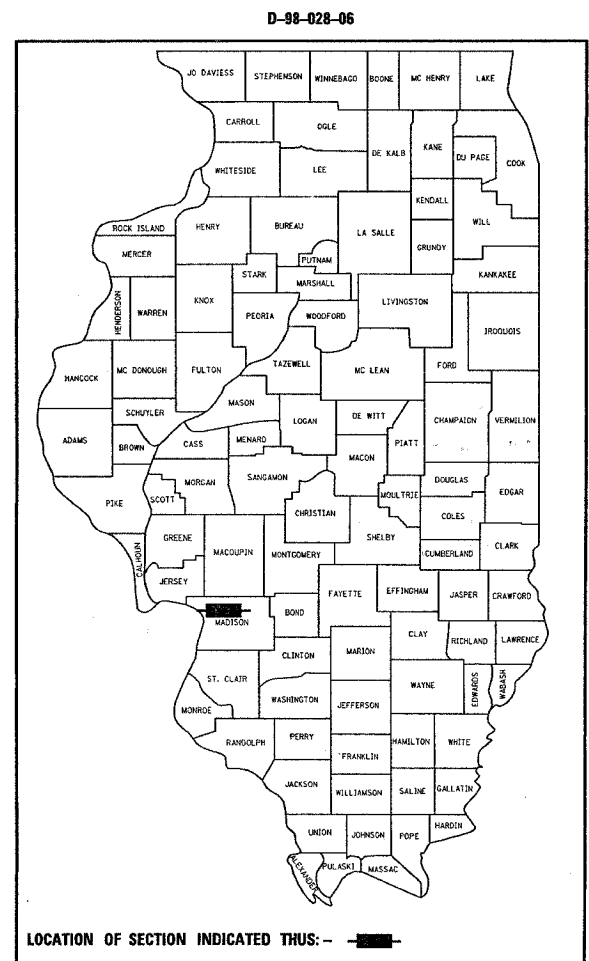
FAP ROUTE 785 (IL 111/140)  
SECTION 132-3I-1

**PROJECT  
MADISON COUNTY**

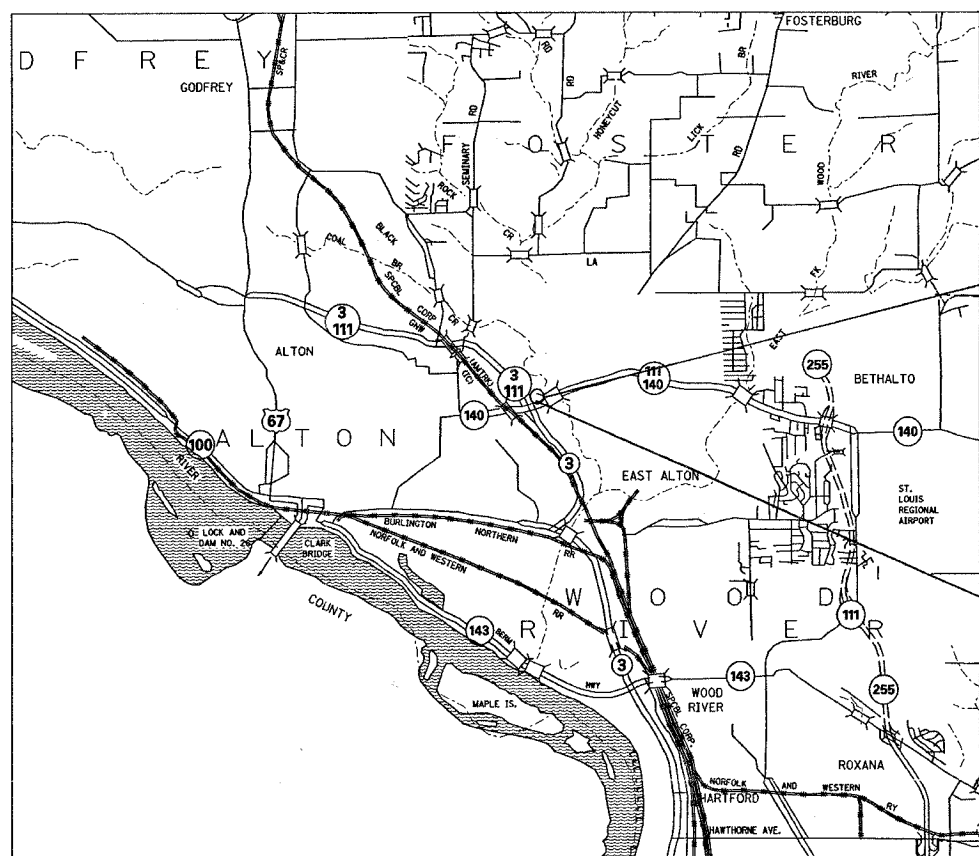
**SLOPE REPAIR**

**C-98-015-06**

FOR INDEX OF SHEETS, SEE SHEET NO. 2

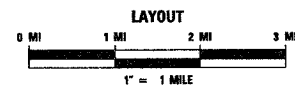


LOCATION OF SECTION INDICATED THUS: [Symbol]



BEGIN PROJECT  
STA. 10 + 84

END PROJECT  
STA. 12 + 34

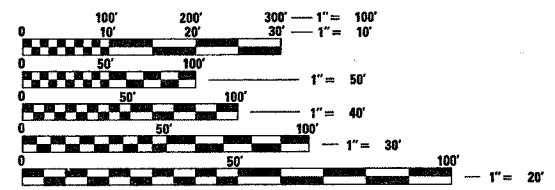


GROSS AND NET LENGTH = 150 FT = 0.02 MILES

LAT: 38.90622  
LONG: -90.12661

TRAFFIC DATA  
2006 ADT = 12,900 (ESTIMATED)  
SU = 4.3%  
MU = 1.9%

MICROFILMED \_\_\_\_\_  
REEL NUMBER \_\_\_\_\_  
AWARDED \_\_\_\_\_  
RESIDENT ENGINEER \_\_\_\_\_  
AS BUILT CHANGES WERE MADE  
ON THE FOLLOWING SHEETS



FULL SIZE PLANS HAVE BEEN PREPARED USING STANDARD  
ENGINEERING SCALES. REDUCED SIZED PLANS WILL NOT  
CONFORM TO STANDARD SCALES. IN MAKING MEASUREMENTS  
ON REDUCED PLANS, THE ABOVE SCALES MAY BE USED.

J.U.L.I.E.  
JOINT UTILITY LOCATION INFORMATION FOR EXCAVATION  
1-800-892-0123

CONTRACT NO. 76988

STATE OF ILLINOIS  
DEPARTMENT OF TRANSPORTATION  
DIVISION OF HIGHWAYS

SUBMITTED May 19, 2006  
May 19, 2006  
DEPUTY DIRECTOR OF HIGHWAYS  
REGION FIVE ENGINEER

June 30, 2006  
Mike Hine  
ENGINEER OF DESIGN AND ENVIRONMENT

June 30, 2006  
Melton R. Seas, P.E.  
DIRECTOR, DIVISION OF HIGHWAYS

**PRINTED BY THE AUTHORITY  
OF THE STATE OF ILLINOIS**

PROJECT ENGINEER: WENDA SOUTHERLAND (618) 346-3159  
SQUAD LEADER: GREG HANCOCK (618) 346-3195

**GENERAL NOTES**

1. THE STANDARDS AND REVISION NUMBERS LISTED SHALL APPLY TO THIS PROJECT.
2. ILLINOIS STATE LAW REQUIRES A 48-HOUR NOTICE BE GIVEN TO UTILITIES BEFORE DIGGING. FIELD MARKING OF FACILITIES MAY BE OBTAINED BY CONTACTING J.U.L.I.E. OR FOR NON-MEMBERS, THE UTILITY COMPANY DIRECTLY. AGENCIES KNOWN TO HAVE FACILITIES WITHIN THE PROJECT AREA ARE AS FOLLOWS:
  - CITY OF ALTON (WATER AND SANITARY SEWER)
  - AMERENUE (GAS AND ELECTRIC)
  - CHARTER COMMUNICATIONS, INC. (CABLE TV)
  - ILLINOIS AMERICAN WATER CO. (WATER)
  - SBC (COMMUNICATIONS)
3. WHERE SECTION OR SUB-SECTION MONUMENTS ARE ENCOUNTERED THE ENGINEER SHALL BE NOTIFIED BEFORE SUCH MONUMENTS ARE REMOVED. THE CONTRACTOR SHALL PROTECT AND CAREFULLY PRESERVE ALL PROPERTY MARKERS AND MONUMENTS UNTIL THE OWNER, AN AUTHORIZED SURVEYOR, OR AGENT HAS WITNESSED OR OTHERWISE REFERENCED THE LOCATION.
4. NO OVERNIGHT LANE CLOSURES SHALL BE ALLOWED ON THE PROJECT. THE SHOULDER CAN BE CLOSED FOR THE DURATION OF THE PROJECT.
5. ROAD CONSTRUCTION AHEAD SIGNS SHALL BE PLACED AT THE BEGINNING AND END OF THE PROJECT PLUS THE INTERSECTING SIDE ROADS, AND WILL BE INCLUDED IN THE TRAFFIC CONTROL PAY ITEMS. ALL CONSTRUCTION SIGNS SHALL BE FLUORESCENT ORANGE (48"x48").
6. FLAGGERS SHALL BE PRESENT DURING ALL CLOSURE HOURS, INCLUDING LUNCH HOUR, AND NO ADDITIONAL COMPENSATION SHALL BE ALLOWED.
7. THE CONTRACTOR SHALL VERIFY ALL DIMENSIONS AND CONDITIONS IN THE FIELD PRIOR TO CONSTRUCTION AND ORDERING OF MATERIALS.
8. REMOVE SHEET PILING - REMOVE THE GUARDRAIL USED AS SHEET PILING. THE STEEL SHEET PILING SHALL REMAIN IN PLACE. SEE SPECIAL PROVISION.
9. THE WATER LINE LOCATION IS PROVIDED FROM PERMIT INFORMATION (NOT SURVEYED). AN ABANDONED WATERLINE (NOT SHOWN) RUNS PARALLEL APPROXIMATELY 5 FEET NORTH OF WATERLINE. THE CONTRACTOR IS STILL REQUIRED TO FIELD VERIFY UTILITY LOCATIONS. THE ABANDONED WATER LINE SHALL BE REMOVED AS DIRECTED BY THE ENGINEER. THE COST SHALL BE INCLUDED WITH THE PAY ITEM "STONE DUMPED RIPRAP, CLASS A5".
10. THE CONTRACTOR MAY REMOVE THE RAIL ELEMENT OF THE GUARDRAIL WITH THE APPROVAL OF THE ENGINEER. THE CONTRACTOR SHALL REATTACH THE RAIL BEFORE OPENING THE SHOULDER TO TRAFFIC.
11. ANY DAMAGE TO THE GUARDRAIL INCURRED BY THE CONTRACTOR'S OPERATIONS SHALL BE REPAIRED BY THE CONTRACTOR AT THE CONTRACTOR'S EXPENSE AND AS DIRECTED BY THE ENGINEER.
12. THE EXISTING 12" CMP AT STA. 11+94 SHALL BE CUT TO THE CONTOUR OF THE RIPRAP AS DIRECTED BY THE ENGINEER. THE COST SHALL BE INCLUDED WITH THE PAY ITEM STONE DUMPED RIPRAP, RRS.
13. TREES REMOVED UNDER PAY ITEMS 20100110 AND 20100210 SHALL BE SAWN OFF AT GROUND LEVEL.
14. THE CONTRACTOR SHALL PROTECT THE BRIDGE PIER THAT IS ON THE SOUTH EAST BANK FROM DAMAGE FROM RIPRAP. IF THE PIER IS DAMAGED, THE CONTRACTOR SHALL REPAIR IT TO THE SATISFACTION OF THE ENGINEER AT NO ADDITIONAL COST TO THE DEPARTMENT.
15. THE PAVEMENT REMOVAL AND REPLACEMENT SHOWN AT THE SOUTH EAST CORNER OF THE BRIDGE IS APPROXIMATE. THE SIZE WILL BE DETERMINED BY THE ENGINEER AFTER INSPECTING THE VOID BEHIND THE BRIDGE ABUTMENT.
16. THE CONTRACTOR SHALL VERIFY FIELD CONDITIONS AT THE INLET LOCATION. ALL WORK NECESSARY TO INSTALL THE INLET WILL BE INCLUDED IN THE COST OF "INLETS, TYPE A, TYPE 3 FRAME AND GRATE". NO ADDITIONAL COMPENSATION WILL BE ALLOWED.
17. THE 12" CORRUGATED METAL PIPE SHALL BE PLACED FROM THE PROPOSED INLET TO THE EXISTING RIPRAP DITCH AT APPROXIMATELY STATION 11+60 LT. THE INVERT ELEVATIONS WILL BE DETERMINED BY THE RESIDENT. ALL CONNECTIONS NEEDED TO COMPLETE THE RUN WILL BE INCLUDED IN THE COST OF THE PAY ITEM "PIPE CULVERTS, TYPE 1, CORRUGATED STEEL OR ALUMINUM CULVERT PIPE 12" ".
18. A NEW RUN OF SHEET PILING WILL BE PLACED AT APPROXIMATELY 32' LT., APPROXIMATELY 60' EAST FROM BRIDGE.
19. IF EXISTING SHEET PILING IS IN CONFLICT WITH PROPOSED "PIPE CULVERTS, TYPE 1, CORRUGATED STEEL OR ALUMINUM CULVERT PIPE 12" ", THE CONFLICTING AREA OF SHEET PILE SHALL BE CUT TO ALLOW ROOM FOR THE PROPOSED PIPE. THE COST OF THIS REMOVAL WILL BE INCLUDED IN THE COST OF "PIPE CULVERTS, TYPE 1, CORRUGATED STEEL OR ALUMINUM CULVERT PIPE 12" ".
20. THE PERMANENT STEEL SHEET PILING SHALL HAVE A MINIMUM EFFECTIVE SECTION MODULES OF 24.8.

**INDEX OF SHEETS**

- 1 COVER SHEET
- 2 INDEX OF SHEETS, STANDARDS, COMMITMENTS, AND GENERAL NOTES
- 3 SUMMARY OF QUANTITIES
- 4 PLAN VIEW REMOVAL
- 5 PROPOSED PLAN VIEW
- 6 DETAILS
- 7-12 CROSS SECTIONS
- 13-14 OMITTED

F.A.P. RTE.	SECTION	COUNTY	TOTAL SHEETS	SHEET NO.
785	132-3I-1	MADISON	14	2
STA.		TO STA.		
FED. ROAD DIST. NO.		ILLINOIS	FED. AID PROJECT	

**STANDARDS**

- 606006
- 701101-01
- 701106-01
- 701601-04
- 702001-06

**COMMITMENTS**

NONE

EARTHWORK SCHEDULE	
STATION	CHANNEL EXCAVATION CU YD
STA. 10+78.65 TO STA. 10+80	3.50
STA. 10+80 TO STA. 10+90	35.80
STA. 10+90 TO STA. 11+00	11.00
STA. 11+00 TO STA. 11+10	7.30
STA. 11+10 TO STA. 11+12.02	2.10
STA. 11+12.02 TO STA. 11+20	14.50
STA. 11+20 TO STA. 11+30	38.90
STA. 11+30 TO STA. 11+40	60.80
STA. 11+40 TO STA. 11+50	69.00
STA. 11+50 TO STA. 11+60	80.40
STA. 11+60 TO STA. 11+70	88.00
STA. 11+70 TO STA. 11+80	72.50
STA. 11+80 TO STA. 11+90	45.00
STA. 11+90 TO STA. 12+00	40.70
STA. 12+00 TO STA. 12+10	32.00
STA. 12+10 TO STA. 12+20	30.80
STA. 12+20 TO STA. 12+30	25.40
STA. 12+30 TO STA. 12+40	19.50
STA. 12+40 TO STA. 12+40.69	0.70
<b>TOTAL</b>	<b>688.00</b>

**EROSION CONTROL**

1. IF ANY UNSUITABLE MATERIAL IS ENCOUNTERED DURING CONSTRUCTION, IT WILL BE NECESSARY TO REMOVE THE UNSUITABLE MATERIAL AND REPLACE IT WITH A SUITABLE MATERIAL AS APPROVED BY THE ENGINEER.
2. ALL EROSION CONTROL PRODUCTS FURNISHED SHALL BE SPECIFICALLY RECOMMENDED BY THE MANUFACTURE FOR THE USE SPECIFIED IN THE EROSION CONTROL PLAN. PRIOR TO THE APPROVAL AND USE OF THE PRODUCT, THE CONTRACTOR SHALL SUBMIT TO THE ENGINEER A NOTARIZED CERTIFICATE BY THE PRODUCER STATING THE INTENDED USE OF THE PRODUCT AND THAT THE PHYSICAL PROPERTIES REQUIRED FOR THIS APPLICATION ARE MET OR EXCEEDED. THE CONTRACTOR SHALL PROVIDE MANUFACTURERS RECOMMENDED INSTALLATION PROCEDURES TO FACILITATE THE ENGINEER IN CONSTRUCTION INSPECTION.
3. NEWLY CONSTRUCTED SLOPES MUST BE COVERED IMMEDIATELY WITH RIPRAP OR SEEDING TO PREVENT ANY EROSION.

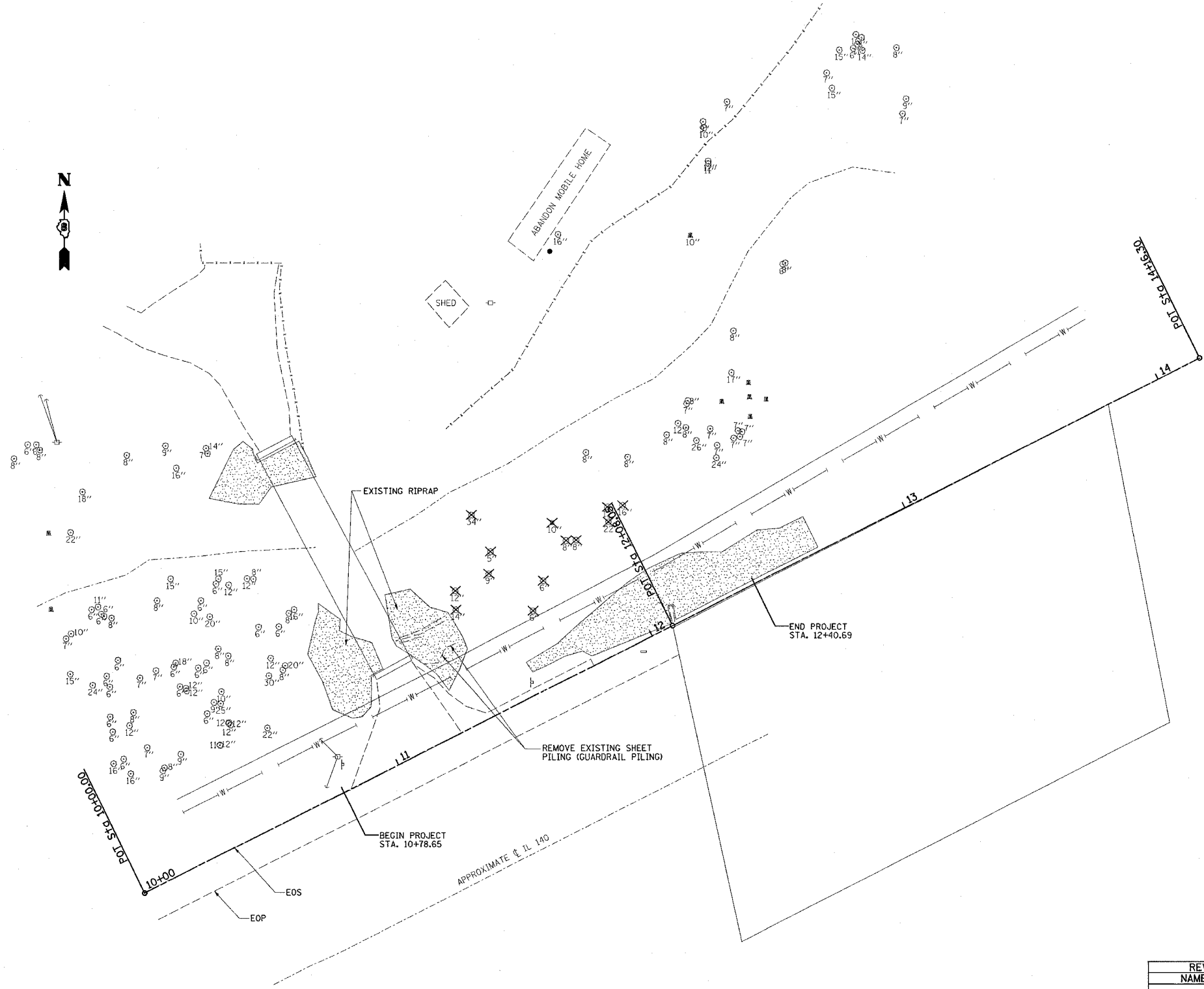
PLOT DATE = 9/5/2006  
 FILE NAME = c:\projects\76988\plan\142106a.dgn  
 PLOT NUMBER = 7 IN.  
 REFERENCE = 48ET4

REVISIONS	
NAME	DATE

ILLINOIS DEPARTMENT OF TRANSPORTATION	
<b>INDEX OF SHEETS, STANDARDS, COMMITMENTS, AND GENERAL NOTES</b>	
FAP 785	
SECTION 132-3I-1	
MADISON COUNTY	
SCALE: VERT.	DRAWN BY
DATE	CHECKED BY



F.A.P. RTE.	SECTION	COUNTY	TOTAL SHEETS	SHEET NO.
785	132-3I-1	MADISON	14	4
STA.		TO STA.		
FED. ROAD DIST. NO.		ILLINOIS FED. AID PROJECT		



NOTE: 172 FOOT PERMETER EROSION BARRIER ALONG NORTH BANK

✕ TREE REMOVAL

PLOT DATE = 9/5/2006  
 PLOT SCALE = 20.0000' / IN.  
 REFERENCE = \*REF\*

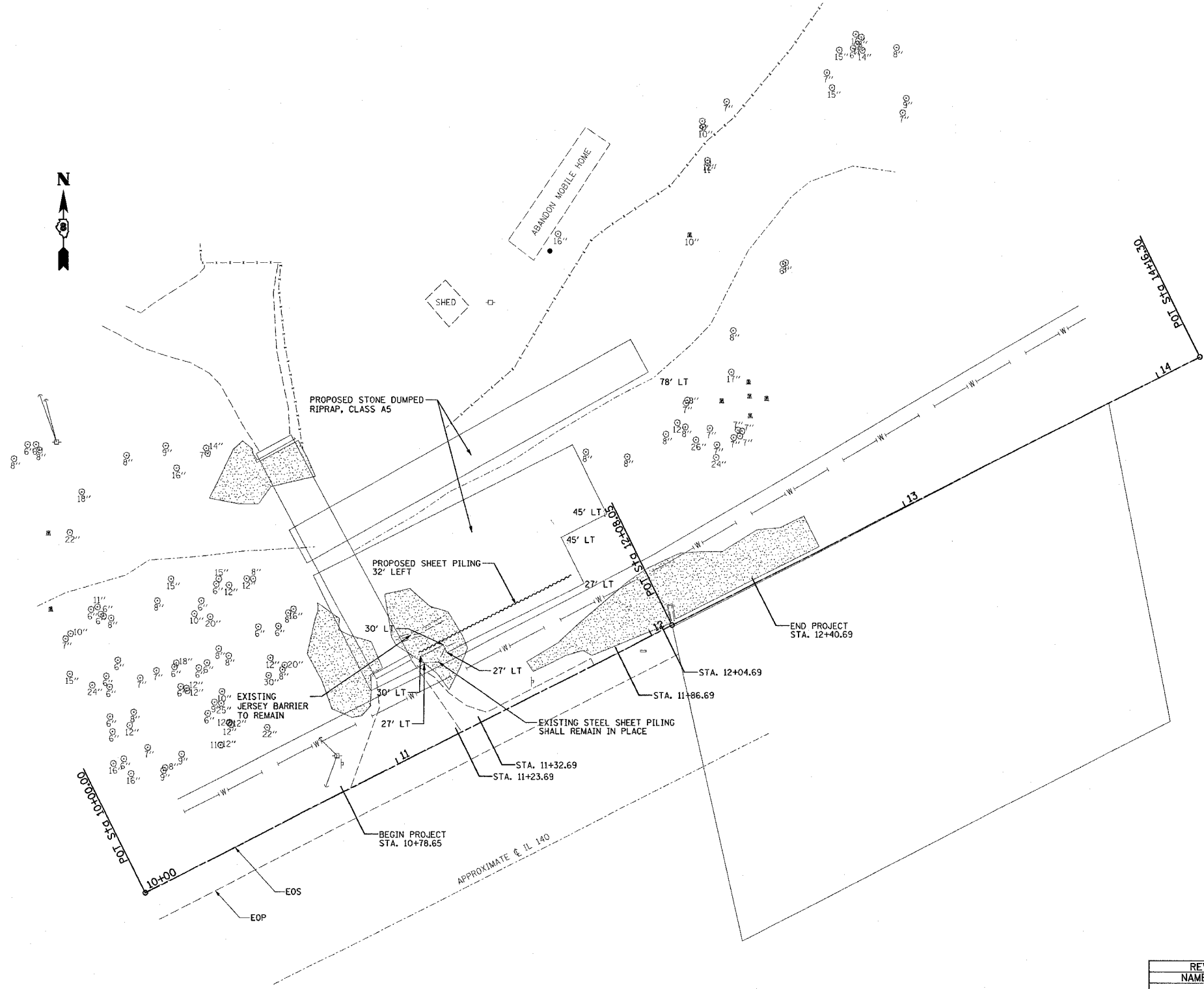
REVISIONS	
NAME	DATE

ILLINOIS DEPARTMENT OF TRANSPORTATION  
**PLAN VIEW  
 REMOVAL**  
 FAP ROUTE 785  
 SECTION 132-3I-1  
 MADISON COUNTY

SCALE: VERT. DATE  
 HORIZ. CHECKED BY

DRAWN BY

F.A.P. RTE.	SECTION	COUNTY	TOTAL SHEETS	SHEET NO.
785	132-31-1	MADISON	14	5
STA.		TO STA.		
FED. ROAD DIST. NO.		ILLINOIS FED. AID PROJECT		



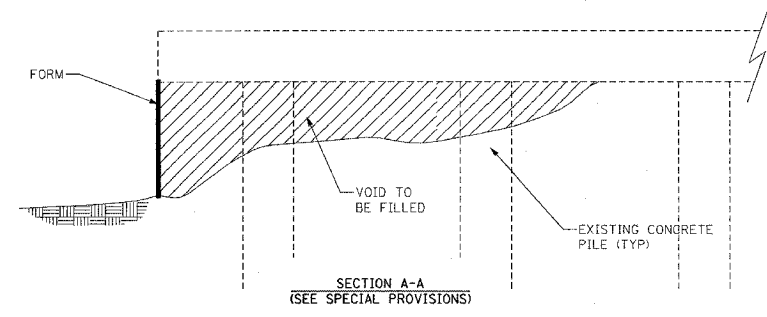
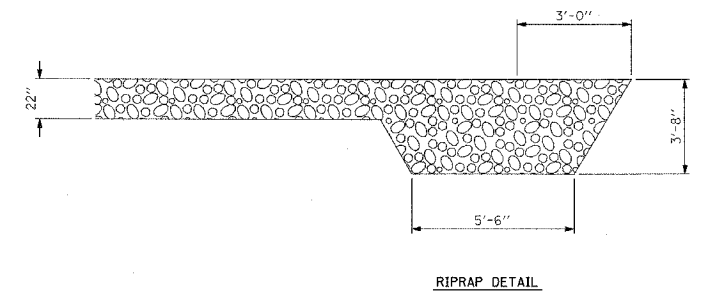
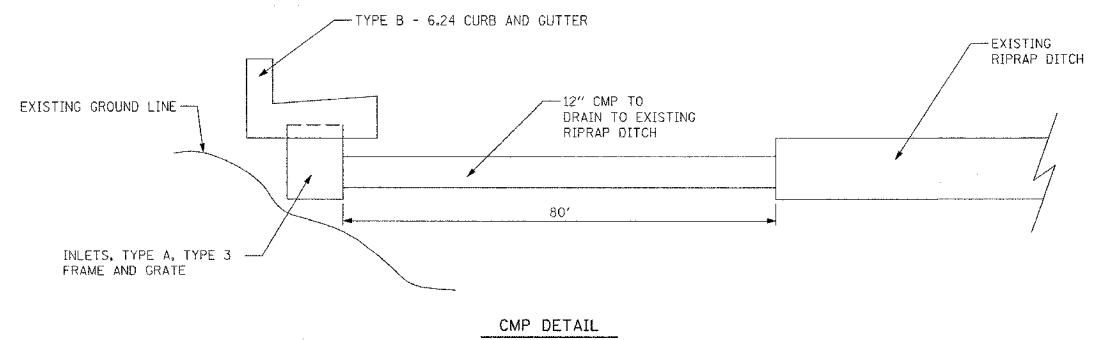
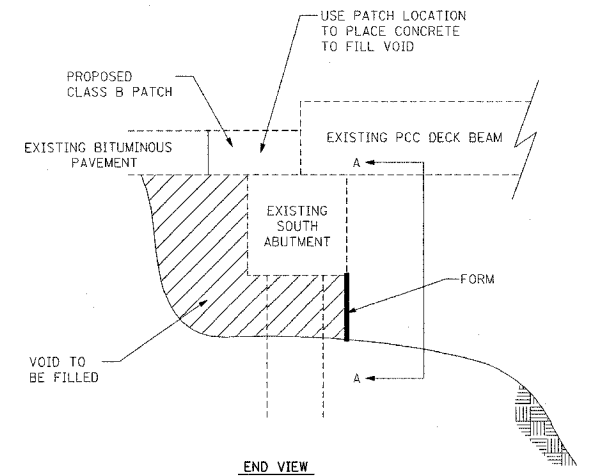
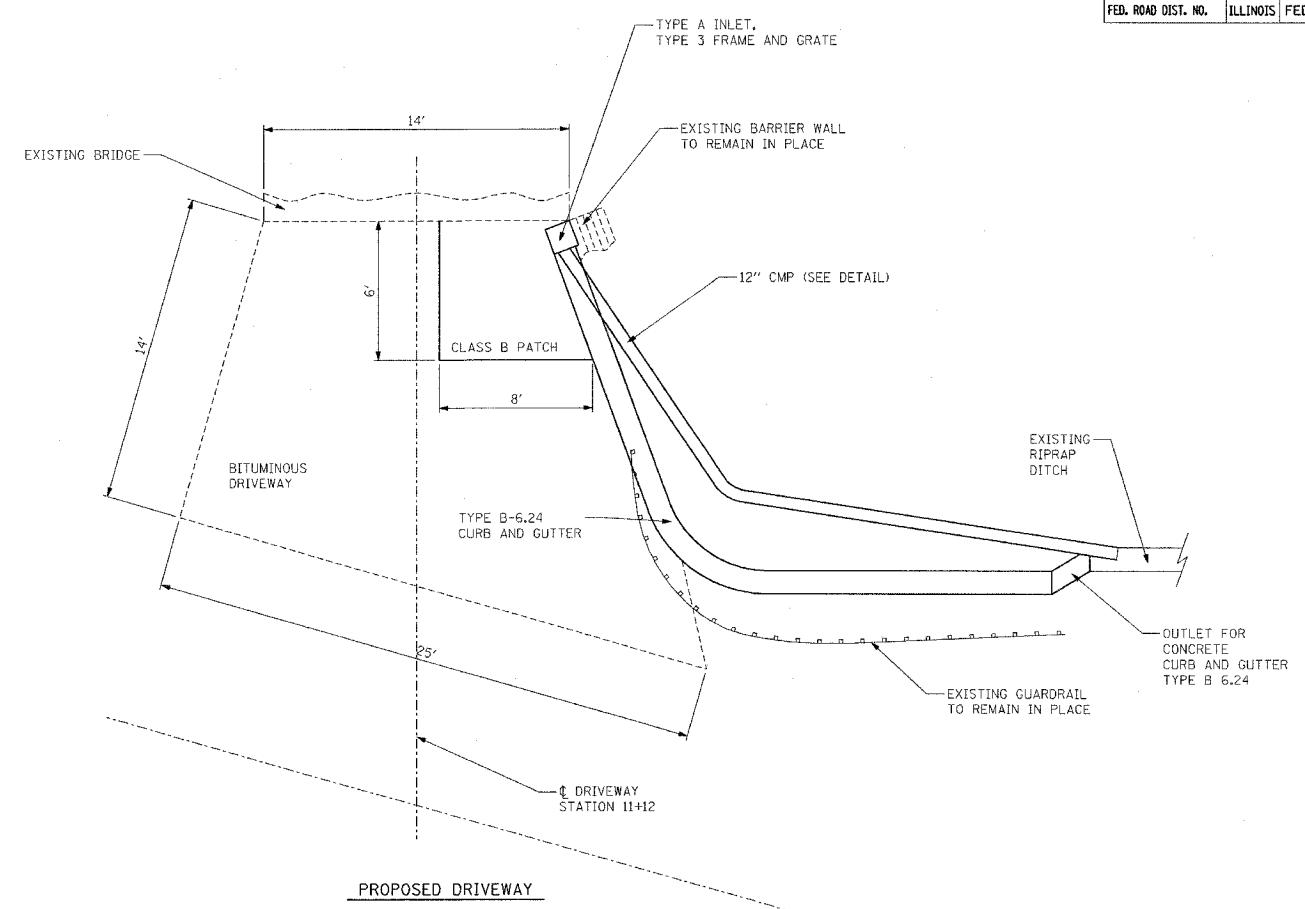
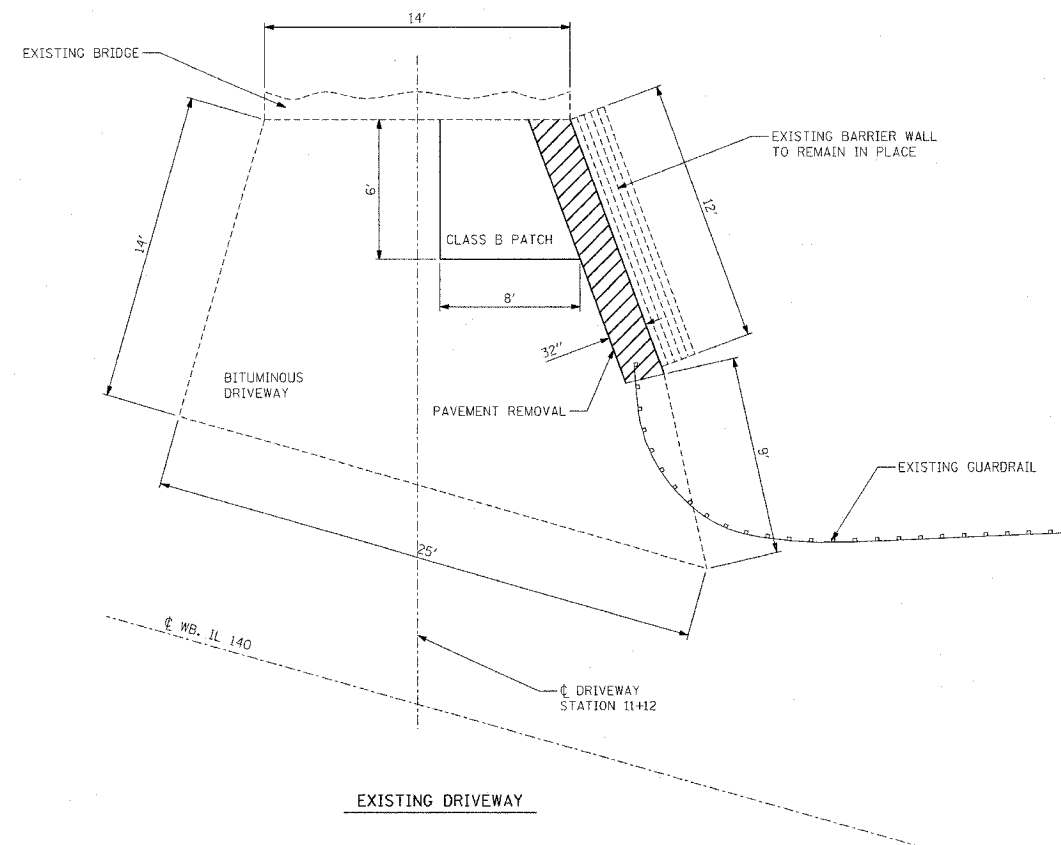
REVISIONS	
NAME	DATE

ILLINOIS DEPARTMENT OF TRANSPORTATION

**PROPOSED  
PLAN VIEW**  
FAP ROUTE 785  
SECTION 132-31-1  
MADISON COUNTY

PLOT DATE = 9/5/2008  
 PLOT SCALE = 20.0000" / IN.  
 REFERENCE = \*REF\*

F.A.P. RTE.	SECTION	COUNTY	TOTAL SHEETS	SHEET NO.
785	132-3I-1	MADISON	14	6
STA. 785		TO STA.		
FED. ROAD DIST. NO. ILLINOIS FED. AID PROJECT				



REVISIONS	
NAME	DATE

ILLINOIS DEPARTMENT OF TRANSPORTATION

**DETAILS**

FAP ROUTE 785  
SECTION 132-3I-1  
MADISON COUNTY

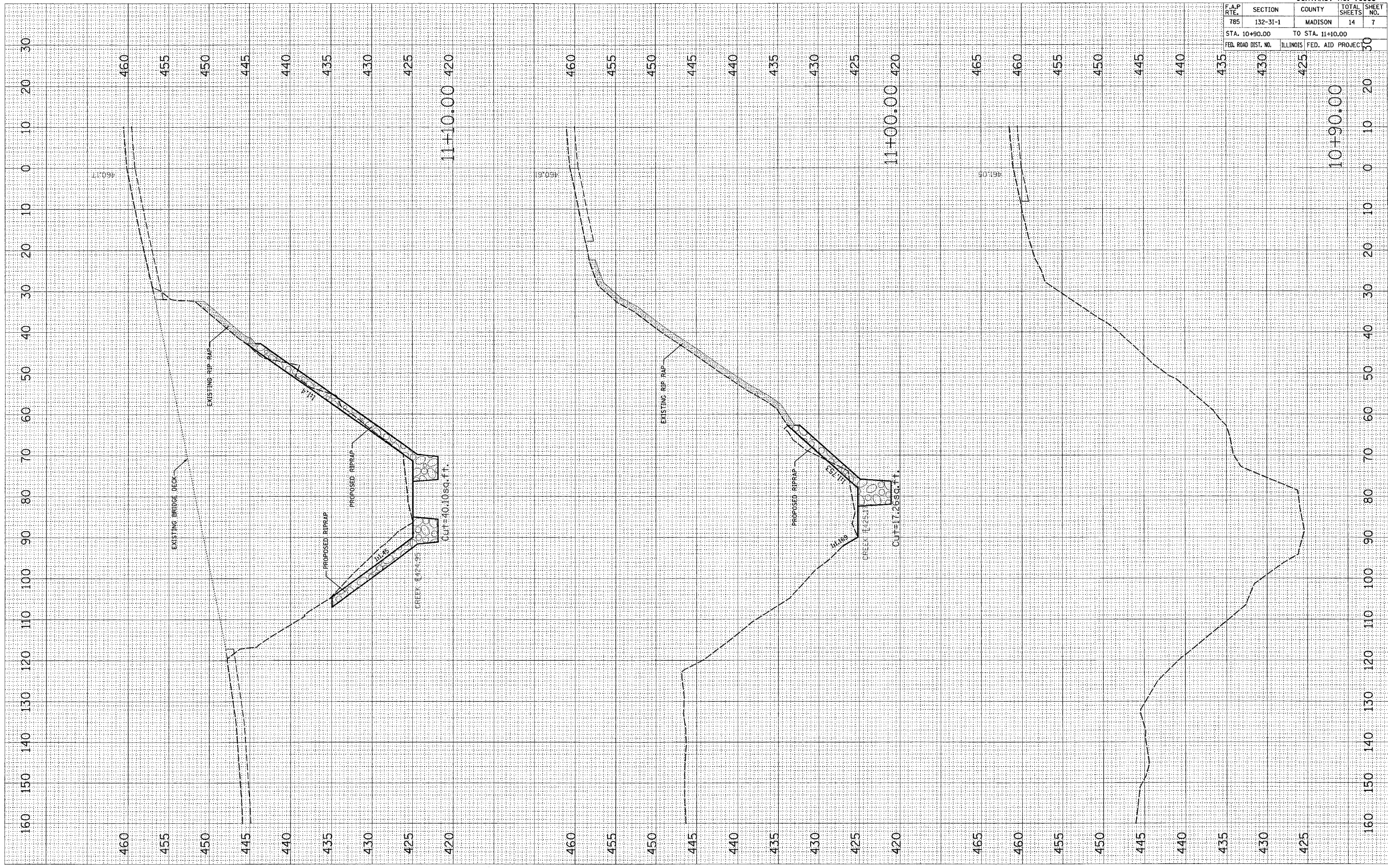
PLOT DATE = 9/5/2006  
 FILE NAME = \\s01\p1\proj\132-3I-1\132-3I-1.dgn  
 PLOT SCALE = 20/0000' / 1" IN.  
 REFERENCE = 0 REF#

PLOT DATE = 9/5/2088  
 PLOT SCALE = 1" = 40.00'  
 USER NAME = challan@ak

ORIGINAL SURVEY NO. \_\_\_\_\_  
 SURVEY NO. \_\_\_\_\_  
 PLOTTED TEMPLATE AREAS CHECKED

FINAL SURVEY NO. \_\_\_\_\_  
 SURVEY NO. \_\_\_\_\_  
 PLOTTED TEMPLATE AREAS CHECKED

BY \_\_\_\_\_ DATE \_\_\_\_\_



F.A.P. RTE.	SECTION	COUNTY	TOTAL SHEETS	SHEET NO.
785	132-31-1	MADISON	14	7

STA.	TO STA.	FED. ROAD DIST. NO.	ILLINOIS	FED. AID PROJECT
10+90.00	11+10.00			

CONTRACT NO. 76988

10+90.00

11+00.00

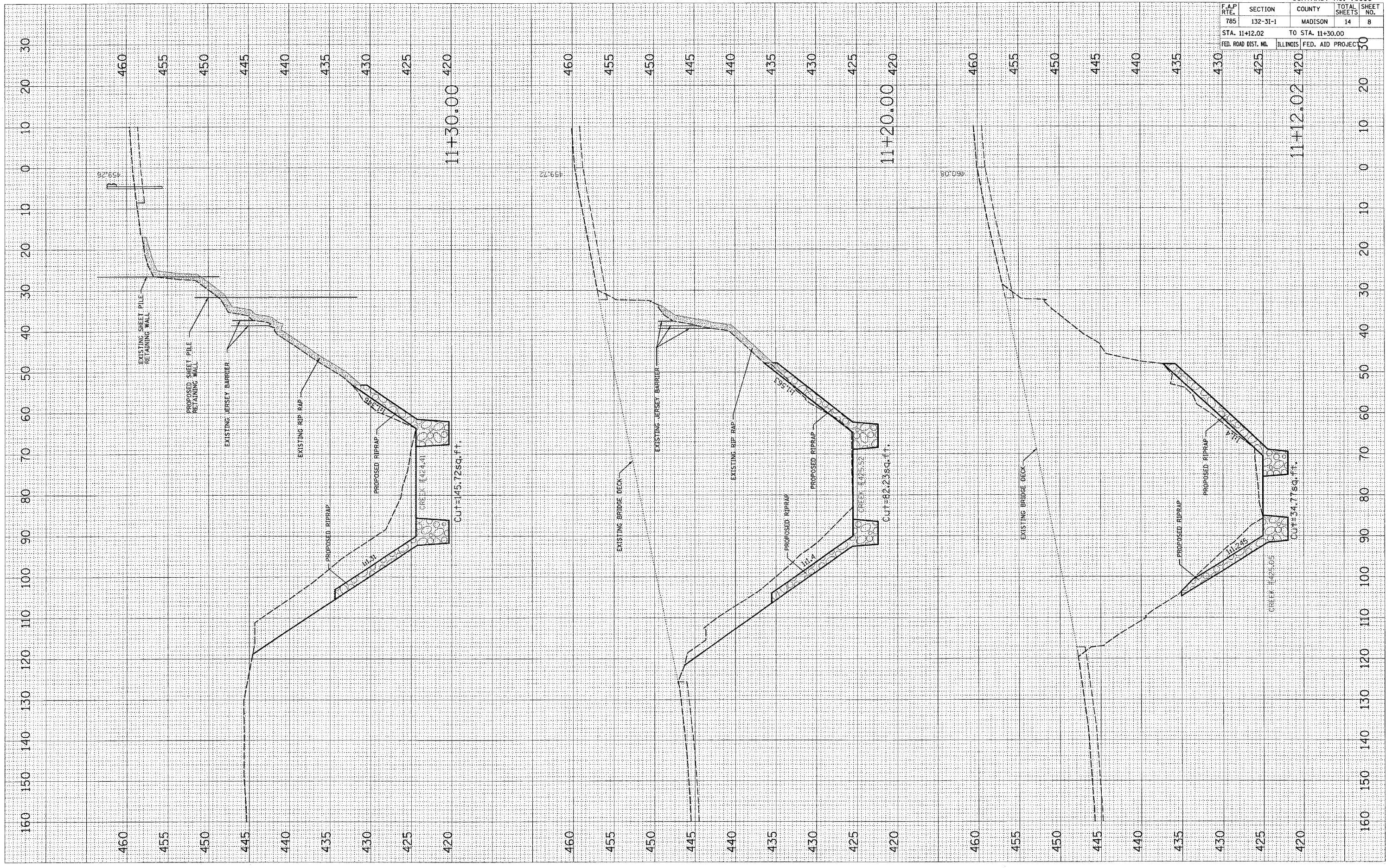
11+10.00

PLOT DATE = 9/5/2006  
 FILE NAME = c:\pwworkspace\11+12.02\11+12.02\11+12.02.dwg  
 PLOT SCALE = 1/8" = 1' IN.  
 USER NAME = chandlerdave

ORIGINAL SURVEY  
 YES  
 NO  
 TEMPLATE  
 AREAS CHECKED

FINAL SURVEY  
 YES  
 NO  
 TEMPLATE  
 AREAS CHECKED

BY  
 DATE



F.A.P. RTE.	SECTION	COUNTY	TOTAL SHEETS	SHEET NO.
785	132-31-1	MADISON	14	8

STA. 11+12.02 TO STA. 11+30.00  
 FED. ROAD DIST. NO. ILLINOIS FED. AID PROJECT

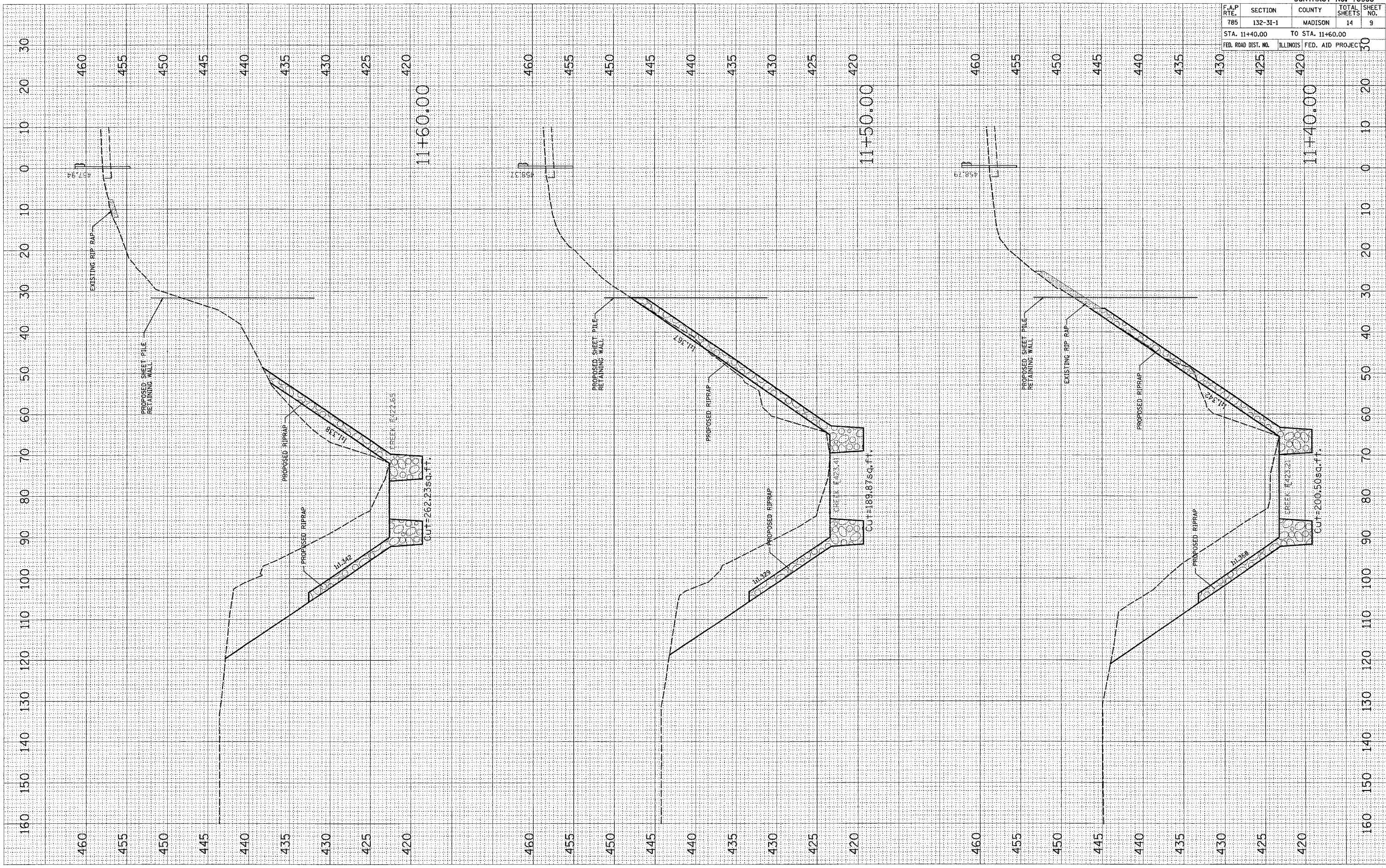
CONTRACT NO. 76988



PLOT DATE = 9/5/2088  
 FILE NAME = c:\p03\p03\11+40\11+40.dwg  
 USER NAME = challoandak

ORIGINAL SURVEY PLOTTED BY DATE  
 SURVEY PLOTTED BY DATE  
 NOTE BOOK NO. AREAS CHECKED

FINAL SURVEY PLOTTED BY DATE  
 SURVEY PLOTTED BY DATE  
 NOTE BOOK NO. AREAS CHECKED



F.A.P. RTE.	SECTION	COUNTY	TOTAL SHEETS	SHEET NO.
785	132-31-1	MADISON	14	9

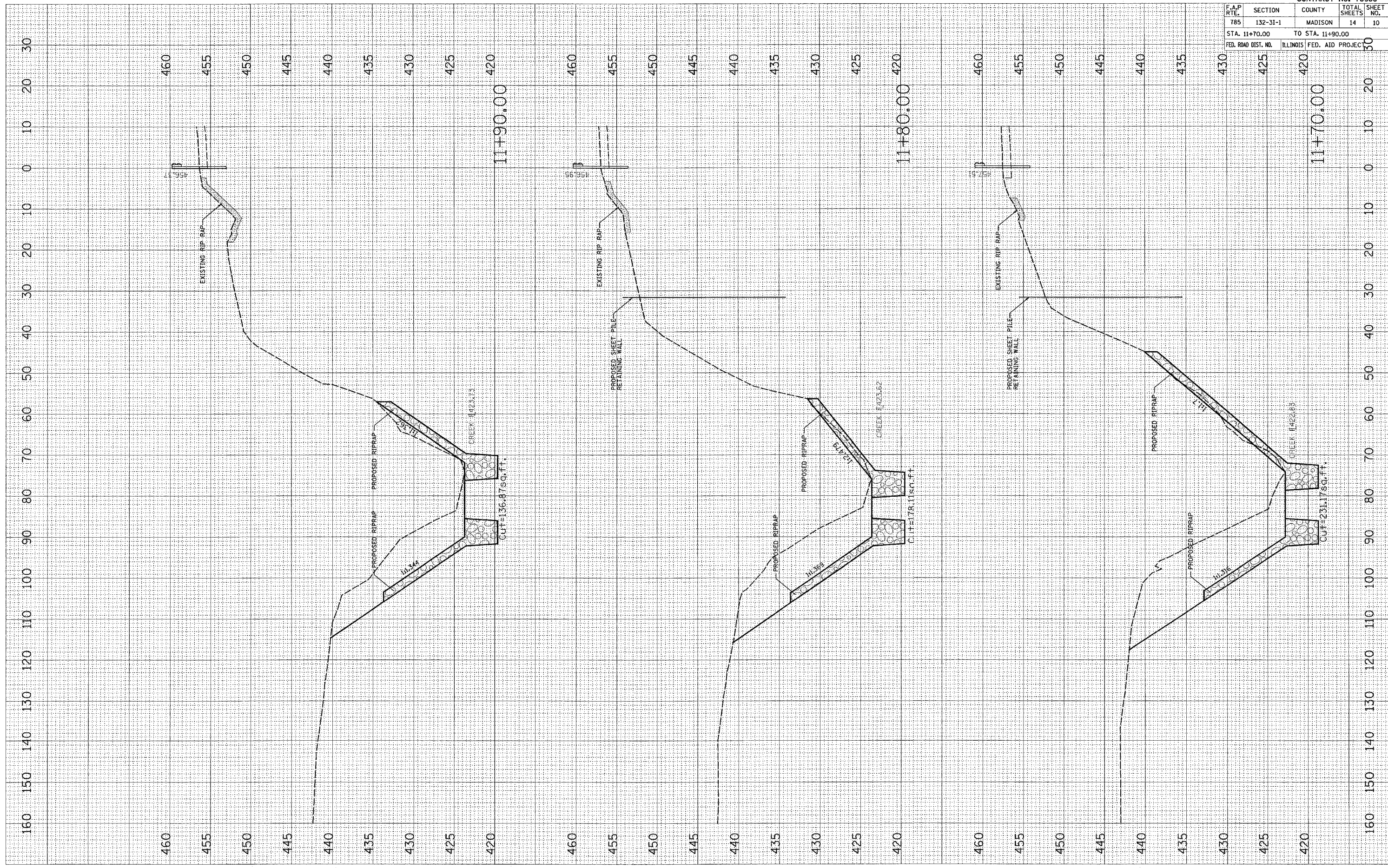
STA. 11+40.00 TO STA. 11+60.00  
 FED. ROAD DIST. NO. ILLINOIS FED. AID PROJECT

CONTRACT NO. 76988

PLOT DATE = 9/5/2006  
 FILE NAME = c:\progra~1\AutoCAD2006\plan\wash2286.dwg  
 USER NAME = chadandrew

ORIGINAL SURVEY PLOTTED BY DATE  
 SURVEY NO. \_\_\_\_\_  
 PLOT DATE \_\_\_\_\_  
 TEMPLATE \_\_\_\_\_  
 AREA \_\_\_\_\_  
 CHECKED \_\_\_\_\_

FINAL SURVEY PLOTTED BY DATE  
 SURVEY NO. \_\_\_\_\_  
 PLOT DATE \_\_\_\_\_  
 TEMPLATE \_\_\_\_\_  
 AREA \_\_\_\_\_  
 CHECKED \_\_\_\_\_



CONTRACT NO. 76988

F.A.P. RTE.	SECTION	COUNTY	TOTAL SHEETS	SHEET NO.
785	132-31-1	MADISON	14	10
STA. 11+70.00		TO STA. 11+90.00		
FED. ROAD DIST. NO.		ILLINOIS	FED. AID PROJECT	

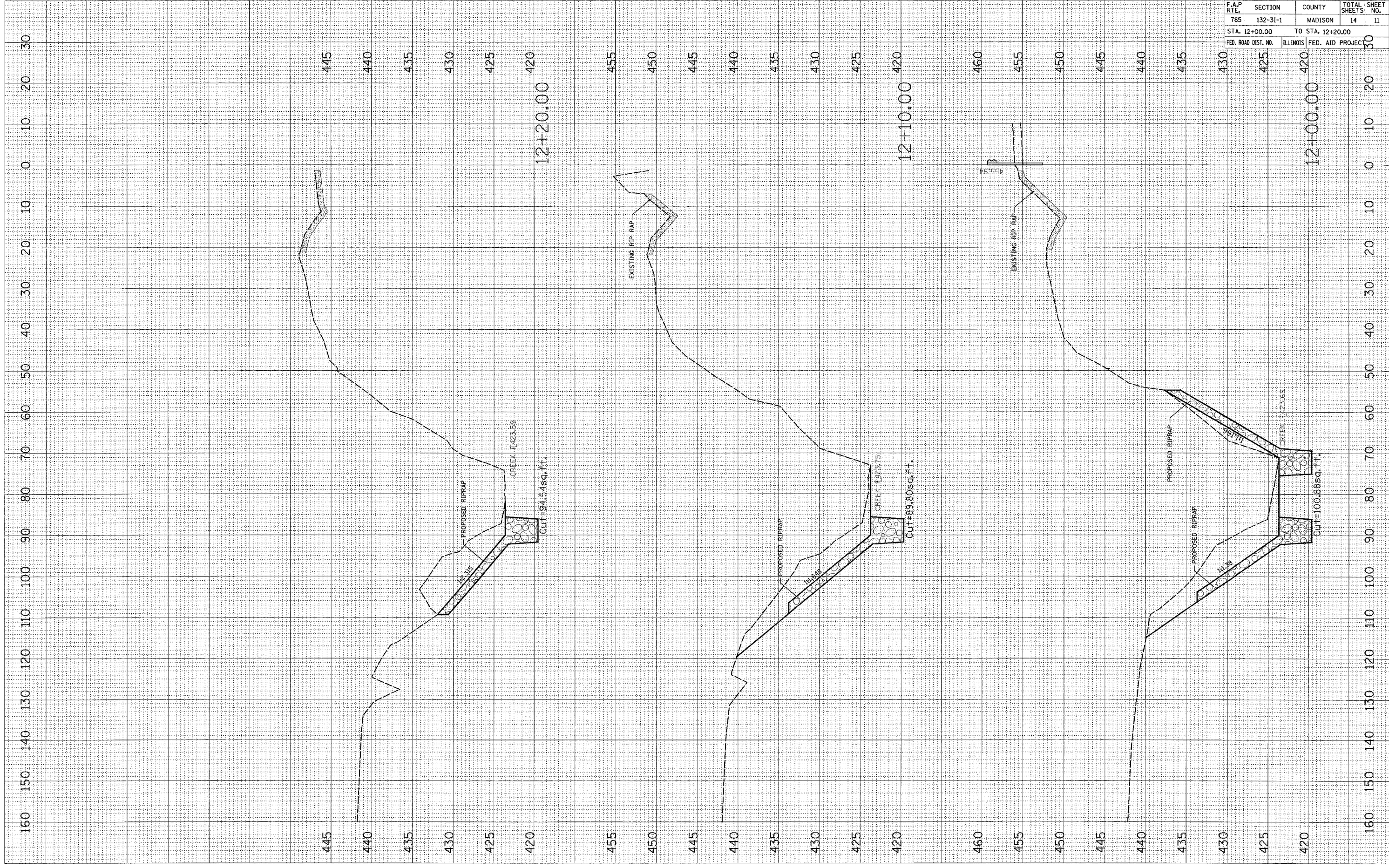
PLOT DATE = 9/5/2086  
 FILE NAME = c:\projects\122886\plan\wash\2886.dwg  
 USER NAME = chollor@state

ORIGINAL SURVEY  
 SVT. YED PL. AD  
 NO. TEMPLATE AREAS CHECKED

FINAL SURVEY  
 SVT. YED PL. AD  
 NO. TEMPLATE AREAS CHECKED

BY

DATE



CONTRACT NO. 76988				
F.A.P. RTE.	SECTION	COUNTY	TOTAL SHEETS	SHEET NO.
785	132-31-1	MADISON	14	11
STA. 12+00.00		TO STA. 12+20.00		
FED. ROAD DIST. NO.	ILLINOIS	FED. AID PROJECT		

CONTRACT NO. 76988

F.A.P. RIE.	SECTION	COUNTY	TOTAL SHEETS NO.	SHEET NO.
785	132-31-1	MADISON	14	12
STA. 12+30.00		TO STA. 12+70.00		
FED. ROAD DIST. NO.		ILLINOIS	FED. AID PROJECT	

FINAL SURVEY NO.	DATE
REVISIONS	BY
NOTED	
TEMPLATE	
AREAS	
CHECKED	

ORIGINAL SURVEY NO.	DATE
REVISIONS	BY
NOTED	
TEMPLATE	
AREAS	
CHECKED	

PLOT DATE = 9/5/2008  
 FILE NAME = c:\p3\jocsa\red2686\p1on\area\122816.dwg  
 PLOT SCALE = 10.0000' / 1" IN.  
 USER NAME = chandlerdake

