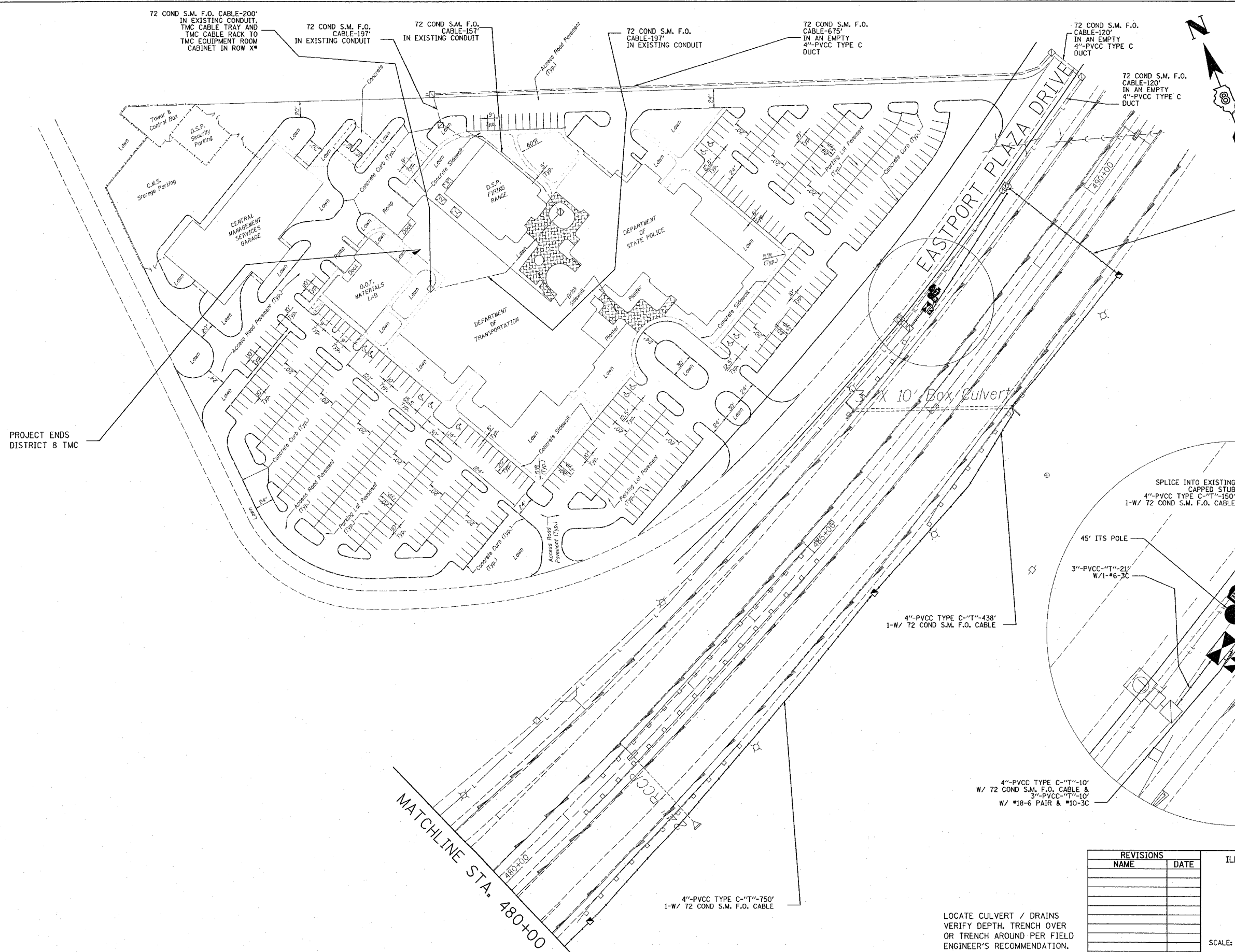
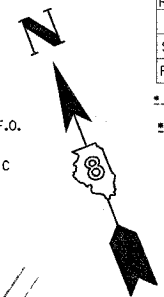


F.A.I. RTE.	SECTION	COUNTY	TOTAL SHEETS	SHEET NO.
255	*	**	21	18

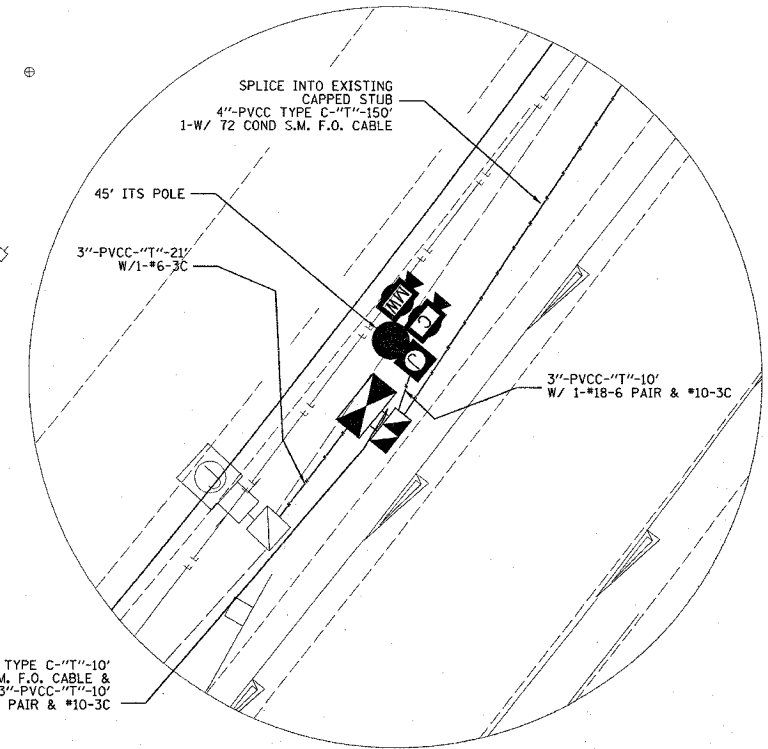
STA. 491+00 TO STA. 480+00
 FED. ROAD DIST. NO. ILLINOIS FED. AID PROJECT

*DIST. 8 ITS 2007-2, 2B
 **MADISON AND ST. CLAIR



PROJECT ENDS DISTRICT 8 TMC

SPLICE INTO EXISTING CAPPED STUB
 4"-PVCC TYPE C-"T"-10'
 4"-PVCC SCH40-"P"-140'
 72 COND S.M. F.O. CABLE



SHEET 7 OF 7

REVISIONS	
NAME	DATE

ILLINOIS DEPARTMENT OF TRANSPORTATION
ITS PLAN
 FAI 255
 SECTION DIST 8 ITS 2007-2, 2B
 MADISON AND ST. CLAIR COUNTIES

SCALE: VERT. DATE
 HORIZ. DATE

DRAWN BY
 CHECKED BY

LOCATE CULVERT / DRAINS
 VERIFY DEPTH, TRENCH OVER
 OR TRENCH AROUND PER FIELD
 ENGINEER'S RECOMMENDATION.

PLOT DATE = 10/25/2006
 PLOT SCALE = 1"=50'
 PLOT SHEET = 7
 REFERENCE = #REF#

Rev. Sheet 10-27-06