

SUMMARY OF QUANTITIES

F.A.I. RTE.	SECTION	COUNTY	TOTAL SHEETS	SHEET NO.
255	*	**	21	2

* DIST. 8 IIS 2007-2-28
 ** MADISON AND ST. CLAIR COUNTIES

SUMMARY OF QUANTITIES			90% FED. 10% STATE	ST. CLAIR CO.	MADISON CO.
CODE NO	ITEM	UNIT	TOTAL QUANTITIES URBAN	CONSTRUCTION TYPE CODE	
				025523.5A.45C 025523.5A.45R STA. 1229+30	557010.3A.46C 557010.3A.31R STA. 488+00
X0925592	LIGHT TOWER, 80 FT. WITH CAMERA LOWERING SYSTEM	EACH	1		1
* 20101400	NITROGEN FERTILIZER NUTRIENT	POUND	113		113
* 20101500	PHOSPHORUS FERTILIZER NUTRIENT	POUND	113		113
* 20101600	POTASSIUM FERTILIZER NUTRIENT	POUND	113		113
* 25000210	SEEDING, CLASS 2A	ACRE	1.3		1.3
* 28000250	TEMPORARY EROSION CONTROL SEEDING	POUND	126		126
* 28000500	INLET AND PIPE PROTECTION	EACH	1		1
* 66410400	CHAIN LINK FENCE TO BE REMOVED AND RE-ERECTED	FOOT	100		100
67000400	ENGINEER'S FIELD OFFICE, TYPE A	CAL MO	10	3	3
67100100	MOBILIZATION	L SUM	1	0.1	0.1
70100420	TRAFFIC CONTROL AND PROTECTION, STANDARD 701411	EACH	2	1	1
70100700	TRAFFIC CONTROL AND PROTECTION, STANDARD 701406	L SUM	1	0.2	0.2
80300100	LOCATING UNDERGROUND CABLE	FOOT	7500		7500
80500100	SERVICE INSTALLATION, TYPE A	EACH	1	1	
80801500	WOOD POLE, 25 FT., CLASS 5	EACH	1	1	
81012800	CONDUIT IN TRENCH, 3" DIA., PVC	FOOT	586	545	41
8102800	CONDUIT ATTACHED TO STRUCTURE, 3" DIA., PVC	FOOT	245	245	
X0323150	JUNCTION BOX, ALUMINUM, ATTACHED TO STRUCTURE, 18" X 18" X 10"	EACH	4	3	1
81400400	CONCRETE HANDHOLE	EACH	21	1	20
81400600	CONCRETE DOUBLE HANDHOLE	EACH	3	1	1
81500200	TRENCH AND BACKFILL FOR ELECTRICAL WORK	FOOT	10,697	495	10,101
83700300	LIGHT TOWER FOUNDATION, 48" DIAMETER	FOOT	14.3	14.3	
86300305	CONTROLLER CABINET TYPE III, SPECIAL	EACH	1		1
87000105	ELECTRIC CABLE ASSEMBLY IN CONDUIT, 600V (EPR-TYPE TC) 2/C NO. 10 AND NO. 10 GROUND	FOOT	44	22	22
87301715	ELECTRIC CABLE IN CONDUIT, COMMUNICATION NO. 18 6 PAIR	FOOT	44	22	22
87301815	ELECTRIC CABLE IN CONDUIT, SERVICE, NO. 6 3 C	FOOT	33		33
87800210	CONCRETE FOUNDATION, TYPE D (SPECIAL)	FOOT	7	3.5	3.5
87900200	DRILL EXISTING HANDHOLE	EACH	2		2
X0322227	CLOSED CIRCUIT TELEVISION CAMERA SYSTEM	EACH	2	1	1
X0322925	ELECTRIC CABLE IN CONDUIT, TRACER, NO. 14 1C	FOOT	12,532		12,532
X0325066	2955 LAYER 2 SWITCH	EACH	1		1
X0325067	3550 12S LAYER 3 SWITCH	EACH	1		1

SUMMARY OF QUANTITIES			90% FED. 10% STATE	ST. CLAIR CO.	MADISON CO.
CODE NO	ITEM	UNIT	TOTAL QUANTITIES URBAN	CONSTRUCTION TYPE CODE	
				025523.5A.45C 025523.5A.45R STA. 1229+30	557010.3A.46C 557010.3A.31R STA. 488+00
X0325075	CONDUIT ATTACHED TO STRUCTURE, 4" DIA., FIBERGLASS BULLET RESISTANT	FOOT	365		365
X0325076	WIDE AREA NETWORK	L SUM	1	0.1	0.1
X0325077	FIBER OPTIC UTILITY MARKER	EACH	101		101
X0325456	3750G-12S LAYER 3 SWITCH	EACH	2	1	1
X0325460	CONTROLLER CABINET TYPE III, SPECIAL (AIR CONDITIONED)	EACH	1	1	
X0325461	GLC-T SFP MODULE	EACH	2		1
X0325462	MEDIA CONVERTER	EACH	1		1
X0325476	RADAR VEHICLE DETECTION SYSTEM	EACH	2	1	1
X0325483	SFP-GE-L SFP MODULE	EACH	3	1	2
X0325487	WIRED COMMUNICATION DATA CONVERTER	EACH	2	1	1
X0325523	500G LAYER 2 SWITCH	EACH	2	1	1
X0325524	GLC-FE-100FX SFP MODULE	EACH	6	2	4
X8100065	CONDUIT IN TRENCH, 4" DIA., PVC TYPE C	FOOT	10,111		10,111
X0325575	CONDUIT PUSHED, 4" DIA., PVC SCHEDULE 40	FOOT	382		382
X0325576	CONDUIT ATTACHED TO STRUCTURE, 4" DIA., PVC SCHEDULE 40	FOOT	435		435
X8305420	LIGHT POLE, STEEL, 45 FT. WITH CAMERA LOWERING SYSTEM	EACH	1		1
83600200	LIGHT POLE FOUNDATION, 24" DIAMETER	FOOT	10		10
X8710075	FIBER OPTIC CABLE IN CONDUIT, 72 COND. S.M. F.O.	FOOT	12,532		12,532
X8730050	ELECTRIC CABLE IN CONDUIT, SERVICE, NO. 2 3/C COPPER	FOOT	565	565	
X0325592	REMOVE AND RELOCATE STONE RIPRAP	CU YD	2		2

*SPECIALTY ITEMS

Rev.

Rev. 10-27-06

PLOT DATE = 8/24/2006
 FILE NAME = c:\projects\electrical\map\090906.dgn
 PLOT SCALE = 48,5998 1/1 IN.
 REFERENCE = REF#

ROUTE	SECTION	COUNTY	TOTAL SHEETS	SHEET NO.
*	**	***	21	5
STA.		TO STA.		
FED. ROAD DIST. NO.		ILLINOIS	FED. AID PROJECT	

* FAI 255 CONTRACT# 76A19
 ** DIST 8 ITS 2007-2, 2B
 *** MADISON & ST. CLAIR

DESCRIPTION OF STABILIZATION PRACTICES DURING CONSTRUCTION:

1. DURING CONSTRUCTION, AREAS OUTSIDE THE CONSTRUCTION LIMITS SHALL BE PROTECTED. THE CONTRACTOR SHALL NOT USE AREAS OUTSIDE THE CONSTRUCTION LIMITS FOR STAGING, PARKING OF VEHICLES OR CONSTRUCTION EQUIPMENT, STORAGE OF MATERIALS, OR OTHER CONSTRUCTION RELATED ACTIVITIES, EXCEPT AS DIRECTED BY THE ENGINEER.
 - (a.) WITHIN THE CONSTRUCTION LIMITS, AREAS WHICH MAY BE SUSCEPTIBLE TO EROSION, AS DETERMINED BY THE ENGINEER, SHALL REMAIN UNDISTURBED UNTIL FULL SCALE CONSTRUCTION IS UNDERWAY TO PREVENT UNNECESSARY SOIL EROSION.
 - (b.) EARTH STOCKPILES SHALL BE TEMPORARILY SEEDED, IF THEY ARE TO REMAIN UNUSED FOR MORE THAN FOURTEEN DAYS.
 - (c.) AS CONSTRUCTION PROCEEDS, THE CONTRACTOR SHALL INSTITUTE THE FOLLOWING AS DIRECTED BY THE ENGINEER:
 - I. PLACE INLET AND PIPE PROTECTION AT LOCATIONS SHOWN ON THE PLANS.
 - II. TEMPORARILY SEED ERODABLE BARE EARTH ON A WEEKLY BASIS TO MINIMIZE THE AMOUNT OF ERODABLE SURFACE AREA WITHIN THE CONTRACT LIMITS.
 - (d.) EXCAVATED AREAS AND EMBANKMENT SHALL BE PERMANENTLY SEEDED IMMEDIATELY AFTER FINAL GRADING. IF NOT, THEY SHALL BE TEMPORARILY SEEDED IF NO CONSTRUCTION ACTIVITY IN THE AREA IS PLANNED FOR 7 DAYS.
 - (e.) CONSTRUCTION EQUIPMENT SHALL BE STORED AND FUELED ONLY AT DESIGNATED LOCATIONS. ALL NECESSARY MEASURES SHALL BE TAKEN TO CONTAIN ANY FUEL OF OTHER POLLUTANT IN ACCORDANCE WITH EPA WATER QUALITY REGULATIONS. LEAKING EQUIPMENT OR SUPPLIES SHALL BE IMMEDIATELY REPAIRED OR REMOVED FROM THE SITE.
 - (f.) THE RESIDENT ENGINEER SHALL INSPECT THE PROJECT DAILY DURING CONSTRUCTION ACTIVITIES. INSPECTION SHALL ALSO BE DONE WEEKLY AND AFTER RAINS OF 1/2 INCH OR GREATER OR EQUIVALENT SNOWFALL AND DURING THE WINTER SHUTDOWN PERIOD. THE PROJECT SHALL ADDITIONALLY BE INSPECTED BY THE CONSTRUCTION FIELD ENGINEER ON A BI-WEEKLY BASIS TO DETERMINE THAT EROSION CONTROL EFFORTS ARE IN PLACE AND EFFECTIVE AND IF OTHER EROSION CONTROL WORK IS NECESSARY.
 - (g.) SEDIMENT COLLECTED DURING CONSTRUCTION ON THE INLET AND PIPE PROTECTION SHALL BE DISPOSED OF ON THE SITE ON A REGULAR BASIS AS DIRECTED BY THE ENGINEER. THE COST OF THIS MAINTENANCE SHALL BE INCLUDED IN THE UNIT BID PRICE FOR INLET AND PIPE PROTECTION.
 - (h.) THE INLET AND PIPE PROTECTION SHALL BE REMOVED AS DIRECTED BY THE ENGINEER AFTER USE IS NO LONGER NEEDED OR NO LONGER FUNCTIONING. THE COST OF THIS REMOVAL SHALL BE INCLUDED IN THE UNIT BID PRICE FOR INLET AND PIPE PROTECTION.

DESCRIPTION OF STRUCTURAL PRACTICES AFTER FINAL GRADING:

1. TEMPORARY EROSION SEDED AREAS SHALL BE PROPERLY MAINTAINED UNTIL ALL DISTURBED PROPOSED AREAS ARE SEEDED AND RE-ESTABLISHED.
2. ONCE PERMANANT SEEDING, AS PROPOSED IN THE PLANS ARE FUNCTIONAL AND ESTABLISHED, INLET AND PIPE PROTECTION SHALL BE REMOVED, CLEANED UP, AND DISTURBED TURF RESEEDED.

MAINTENANCE AFTER CONSTRUCTION:

1. CONSTRUCTION IS COMPLETE AFTER ACCEPTANCE BY I.D.O.T. FINAL INSPECTION. MAINTENANCE UP TO THIS DATE WILL BE BY THE CONTRACTOR.

MISCELLANEOUS:

1. ANY GROUND AREA THAT THE CONTRACTOR DISTURBS SHOULD BE SEEDED AT THE END OF EACH WEEK WITH CLASS 7 TEMPORARY EROSION CONTROL SEEDING W/MULCH FOR PERMANENT SEEDING USE CLASS 2A ROADSIDE MIXTURE ALONG THE INTERSTATE.
2. TEMPORARY EROSION CONTROL SEEDING SHALL BE APPLIED AT A RATE OF 100 LBS/ACRES.
3. MULCH METHOD 1 AS APPLIED TO TEMPORARY SEEDING SHALL CONFORM TO SECTION 251 OF THE STANDARD SPECIFICATIONS. MULCH WILL NOT BE PAID FOR SEPARATLY BUT SHALL BE INCLUDED IN THE PRICE FOR TEMPORARY SEEDING.
4. CONSTRUCT INLET AND PIPE PROTECTION AT BEGINNING OF CONSTRUCTION. REMOVE AT END OF CONSTRUCTION.
5. ALL INLET AND PIPE PROTECTION PRODUCTS FURNISHED SHALL BE SPECIFICALLY RECOMMENDED BY THE MANUFACTURER FOR THE USE SPECIFIED IN THE EROSION CONTROL PLAN. PRIOR TO THE APPROVAL AND USE OF THE PRODUCT, THE CONTRACTOR SHALL SUBMIT TO THE ENGINEER A NOTARIZED CERTIFICATION BY THE PRODUCER STATING THE INTENDED USE OF THE PRODUCT AND THAT THE PHYSICAL PROPERTIES REQUIRED FOR THIS APPLICATION ARE MET OR EXCEEDED. THE CONTRACTOR SHALL PROVIDE MANUFACTURER INSTALLATION PROCEDURES TO FACILITATE THE ENGINEER IN CONSTRUCTION INSPECTION.

LEGEND



INLET AND PIPE PROTECTION- FILTER FABRIC, AGGREGATES

THIS PLAN HAS BEEN PREPARED TO COMPLY WITH THE PROVISIONS OF THE NPDES PERMIT NUMBER ILR10, ISSUED BY THE ILLINOIS ENVIRONMENTAL PROTECTION AGENCY FOR STORM WATER DISCHARGES FROM CONSTRUCTION SITE ACTIVITIES.

ACCORDANCE WITH A SYSTEM DESIGNED TO ASSURE THAT QUALIFIED PERSONNEL PROPERLY GATHERED AND EVALUATED THE INFORMATION SUBMITTED. BASED ON MY INQUIRY OF THE PERSON OR PERSONS WHO MANAGE THE SYSTEM, OR THOSE PERSONS DIRECTLY RESPONSIBLE FOR GATHERING THE INFORMATION, THE INFORMATION SUBMITTED IS, TO THE BEST OF MY KNOWLEDGE AND BELIEF, TRUE, ACCURATE AND COMPLETE. I AM AWARE THAT THERE ARE SIGNIFICANT PENALTIES FOR SUBMITTING FALSE INFORMATION, INCLUDING THE POSSIBILITY OF FINE AND IMPRISONMENT FOR KNOWING VIOLATIONS.

TEMPORARY EROSION CONTROL SEEDING LIMITS

I-255		NB I-255 RAMP 2 TO EB I-55/70		EB I-55/70	
FROM STA.	TO STA.	FROM STA.	TO STA.	FROM STA.	TO STA.
1185+55	1233+43	200+00	232+27	479+00	490+00
1236+68	1244+08				
1245+74	1291+26				
1294+53	1294+89				

May C. Jamis
 DEPUTY DIRECTOR OF HIGHWAYS
 REGION FIVE ENGINEER

8-23-06
 DATE

NOTE: ALL ITEMS SHALL BE CONSTRUCTED AS SHOWN ON STANDARD 280001 AND AS DIRECTED BY THE ENGINEER. MAINTENANCE AND CLEANING OF THE EROSION CONTROL ITEMS SHALL BE INCLUDED IN THE RESPECTIVE EROSION CONTROL PAY ITEM.

REVISIONS	
NAME	DATE

ILLINOIS DEPARTMENT OF TRANSPORTATION
 STORM WATER POLLUTION PREVENTION PLAN
 SHEET 1 OF 2

FAI 55/70
 SECTION DIST 8 ITS 2006-2
 MADISON AND ST. CLAIR COUNTY
 AND ST. LOUIS, MO

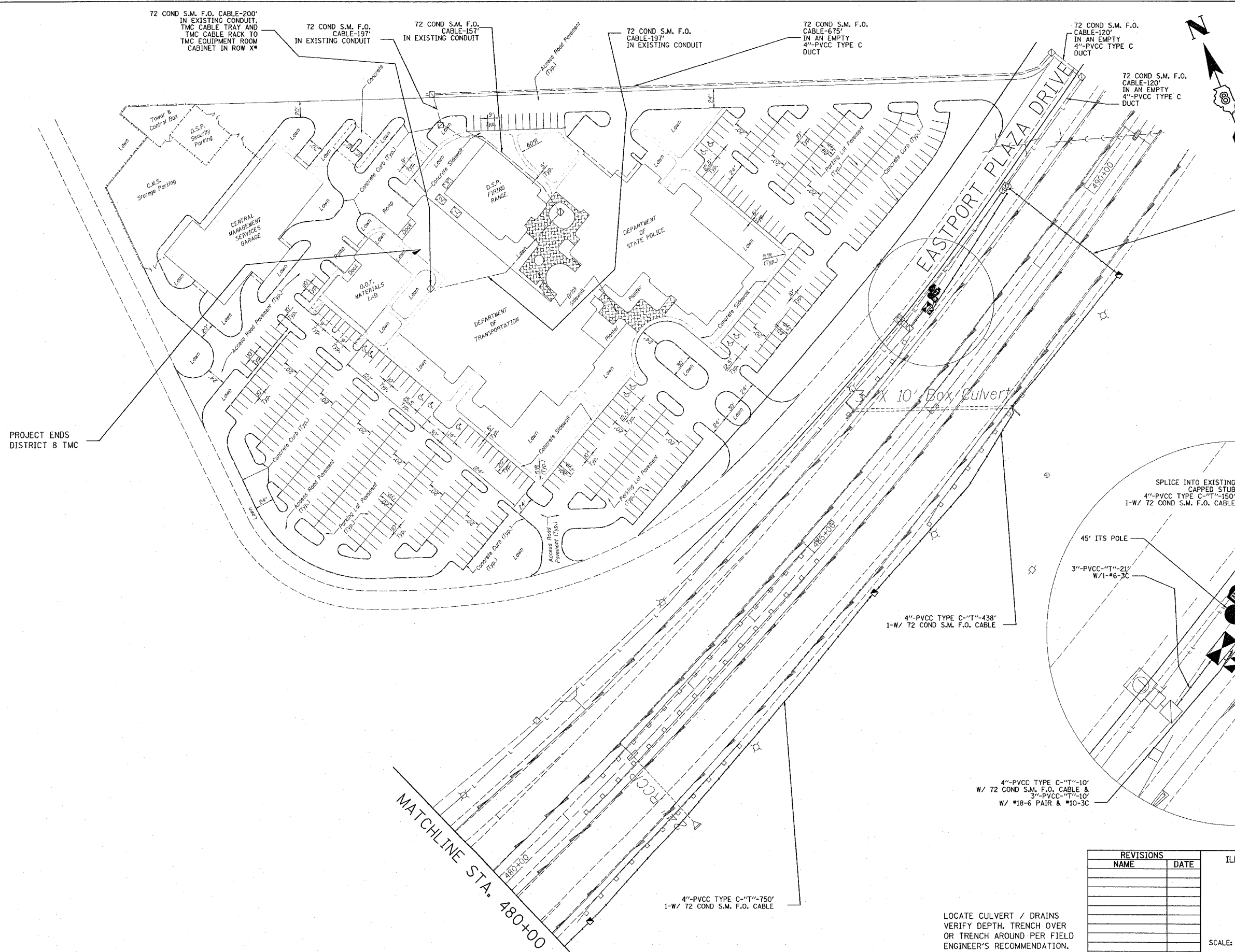
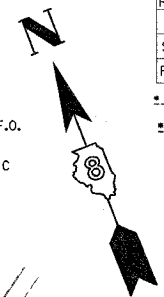
DATE 8/21/2006

Rev. 10-27-06

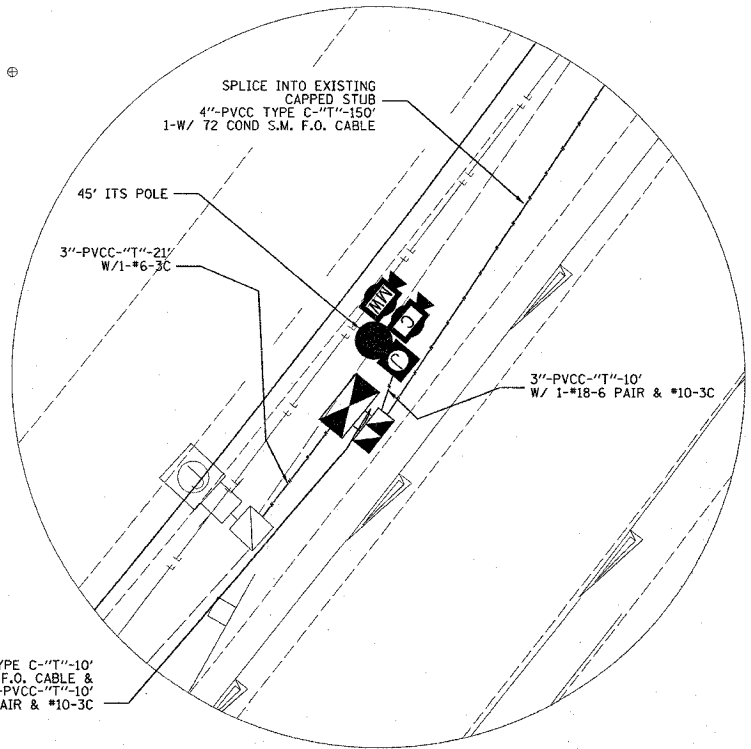
PLOT DATE = 8/21/2006
 FILE NAME = c:\p\projects\aed\85706\asct\c\1\sp\h\067065.dgn
 PLOT SCALE = 40:1
 REFERENCE = SHEET

F.A.I. RTE.	SECTION	COUNTY	TOTAL SHEETS	SHEET NO.
255	*	**	21	18

STA. 491+00 TO STA. 480+00
 FED. ROAD DIST. NO. ILLINOIS FED. AID PROJECT
 *DIST. 8 ITS 2007-2, 2B
 **MADISON AND ST. CLAIR



SPLICE INTO EXISTING CAPPED STUB
 4"-PVCC TYPE C-"T"-10'
 4"-PVCC SCH40-"P"-140'
 72 COND S.M. F.O. CABLE



SHEET 7 OF 7

REVISIONS	
NAME	DATE

ILLINOIS DEPARTMENT OF TRANSPORTATION
ITS PLAN
 FAI 255
 SECTION DIST 8 ITS 2007-2, 2B
 MADISON AND ST. CLAIR COUNTIES
 SCALE: VERT. DATE
 HORIZ. DATE
 DRAWN BY
 CHECKED BY

LOCATE CULVERT / DRAINS
 VERIFY DEPTH, TRENCH OVER
 OR TRENCH AROUND PER FIELD
 ENGINEER'S RECOMMENDATION.

PLOT DATE = 10/25/2006
 PLOT SCALE = 1/8" = 1'-0"
 PLOT SHEET = 7 OF 7
 REFERENCE = #REF#