

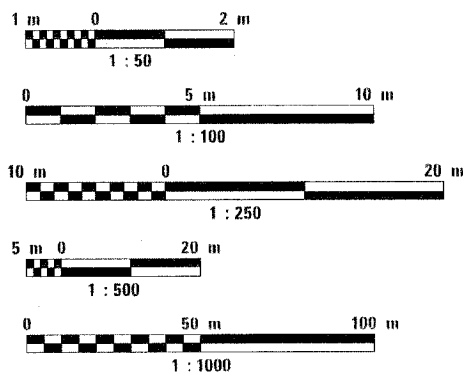
INDEX OF SHEETS

- 1 TITLE SHEET / INDEX OF SHEETS
- 2 STATE STANDARDS, PLAN NOTES
- 3-5 SUMMARY OF QUANTITIES
- 6-9 TYPICAL SECTIONS
- 10-13 QUANTITY SCHEDULES
- 14-33 TRAIL PLAN AND PROFILE
- 34-41 MISC. DETAILS
- 42-69 STRUCTURE PLANS
- 70-117 CROSS SECTIONS

DESIGN DESIGNATION
BIKE PATH

POSTED SPEED LIMIT
20 M.P.H.

METRIC RATIOS



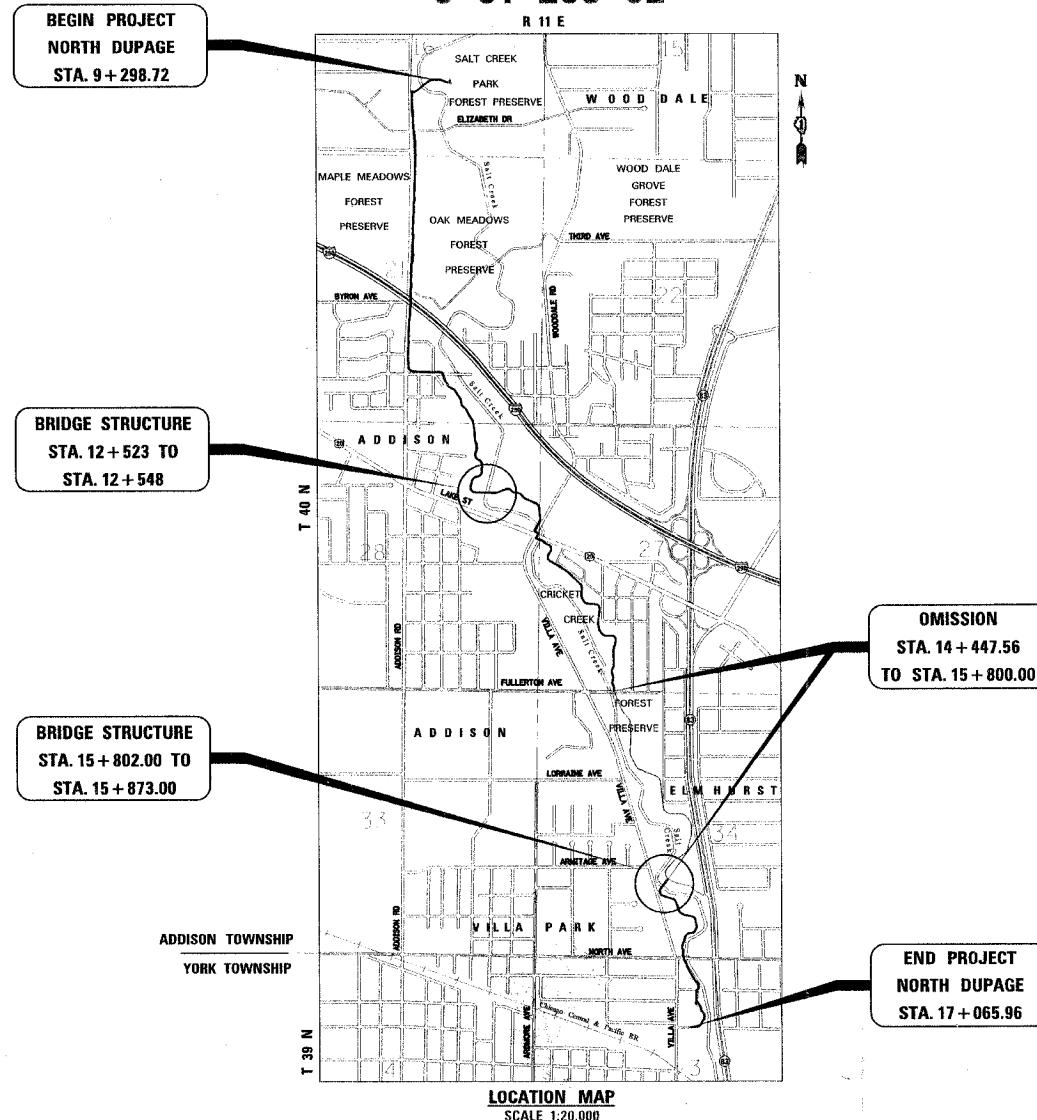
FULL SIZE PLANS HAVE BEEN PREPARED USING STANDARD ENGINEERING SCALES. REDUCED SIZED PLANS WILL NOT CONFORM TO STANDARD SCALES. IN MAKING MEASUREMENTS ON REDUCED PLANS, THE ABOVE SCALES MAY BE USED.

J.U.L.I.E.
JOINT UTILITY LOCATION INFORMATION FOR EXCAVATION
1-800-892-0123

CONTRACT NO. 83713

**STATE OF ILLINOIS
DEPARTMENT OF TRANSPORTATION
DIVISION OF HIGHWAYS
PLANS FOR PROPOSED
FEDERAL AID PROJECT**

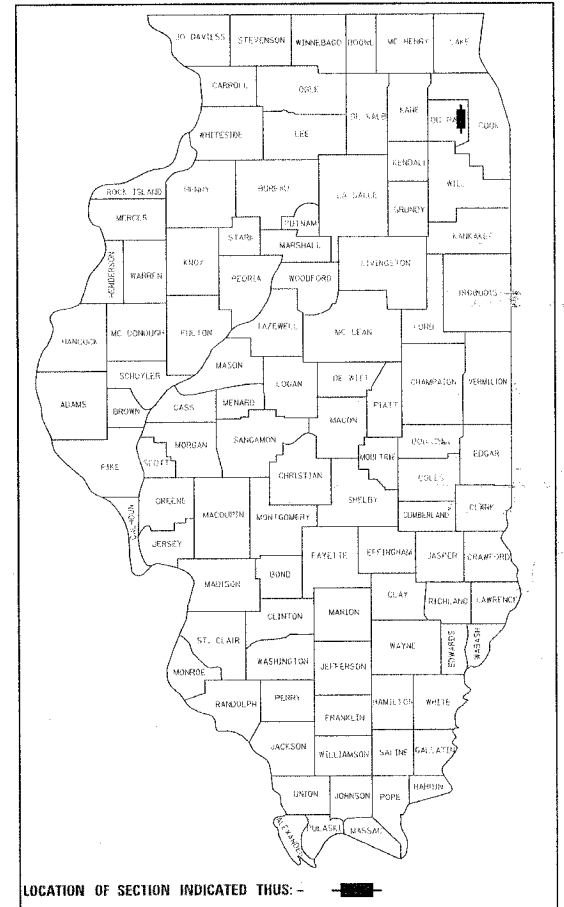
**SALT CREEK GREENWAY TRAIL (NORTH DUPAGE)
PROJECT LIMITS: NORTH OF ELIZABETH DR. TO 2ND ST.
PROJECT NO. M-8003(222)
SECTION NO. 02-00090-00-BT
VILLAGE OF ADDISON
DuPAGE COUNTY
C-91-283-02**



LOCATION MAP
SCALE 1:20,000

GROSS LENGTH = 7,767.24 METERS
NET LENGTH = 6,414.80 METERS

| SECTION | COUNTY | TOTAL SHEETS | SHEET NO. |
|---------------------|---------|--------------------|-----------|
| 02-00090-00-BT | DU PAGE | 117 | 1 |
| Total Sheets 118 | | CONTRACT NO. 83713 | |



VILLAGE OF ADDISON
APPROVED November 5, 2004
Joan E. Weinstock
DIRECTOR OF PUBLIC WORKS

STATE OF ILLINOIS
DEPARTMENT OF TRANSPORTATION
DIVISION OF HIGHWAYS
APPROVED 7/22 2005
Chetan
LOCAL ROADS AND STREETS ENGINEER
APPROVED November 19, 2004
Dina O'Keefe IA
DEPUTY DIRECTOR OF HIGHWAYS, REGION ENGINEER

**PRINTED BY THE AUTHORITY
OF THE STATE OF ILLINOIS**

PLANS PREPARED BY:
URS 1701 GOLF ROAD, SUITE 1000
ROLLING MEADOWS, IL 60008
TEL. (847) 228-0707
FAX (847) 228-1115

FEDERAL AID DESIGN ENGINEER: **JESSICA MILLER** (847) 705-4467



DATE: 11/3/04
Expire: 11/30/09