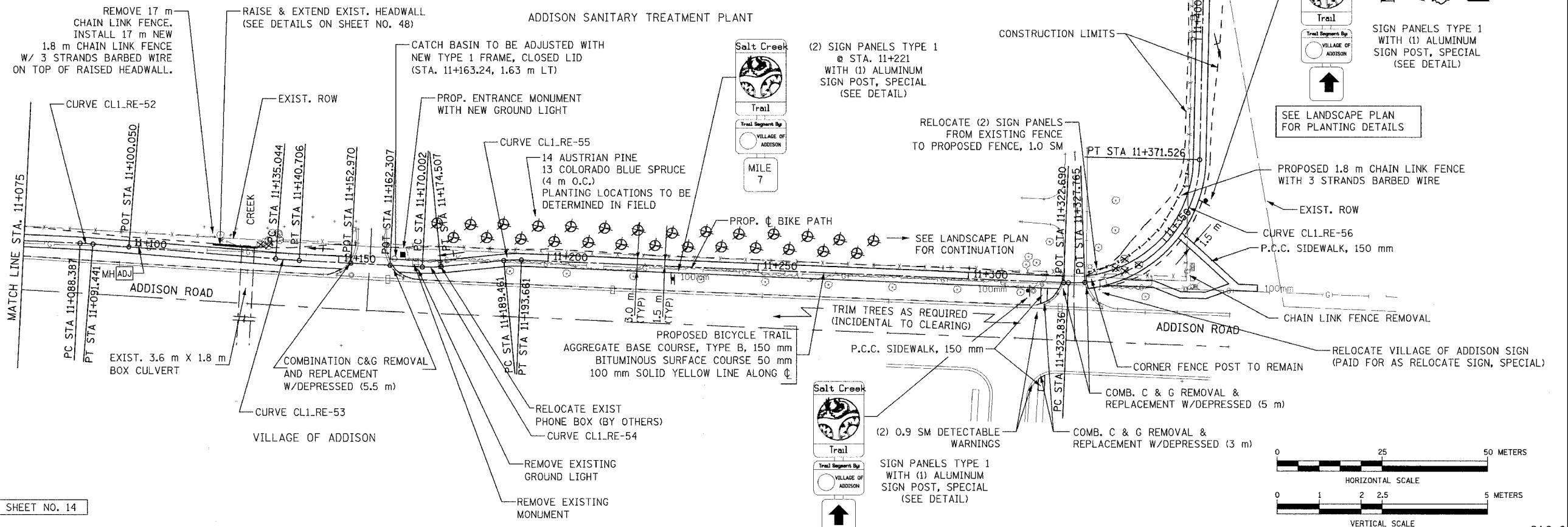
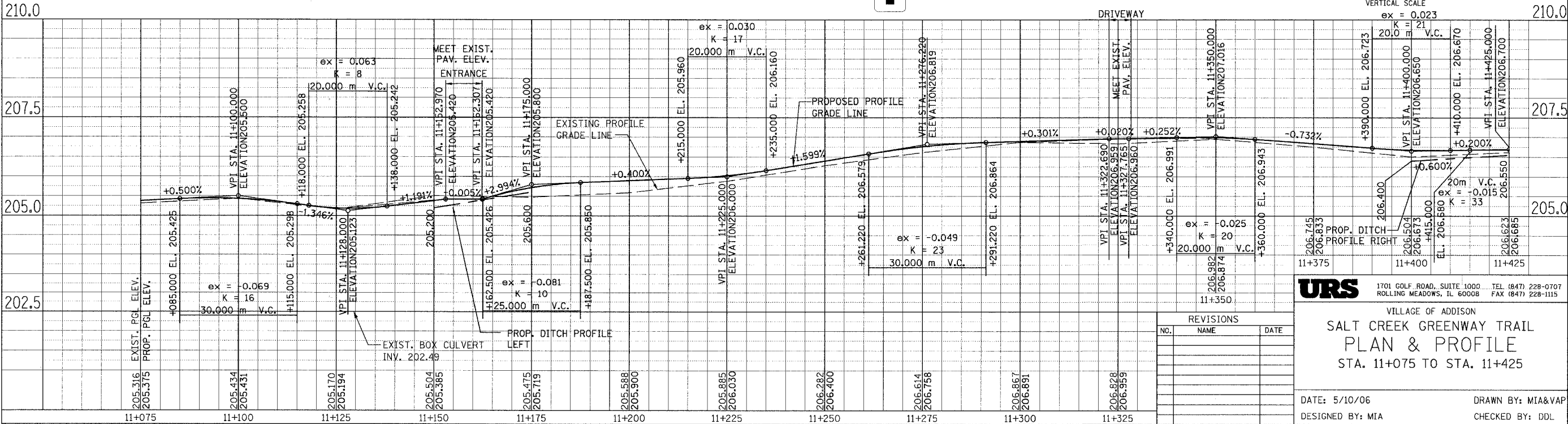
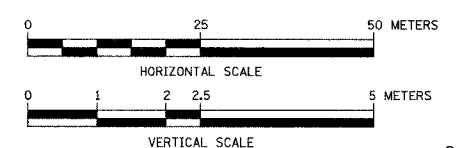


PROP. CURVE CL1.RE-52	PROP. CURVE CL1.RE-53	PROP. CURVE CL1.RE-54	PROP. CURVE CL1.RE-55	PROP. CURVE CL1.RE-56
PI STA = 11+089.914 N = 49756.023 E = 4988.273 Δ = 1° 44' 58" (RT) R = 100.000 m T = 1.527 m L = 3.053 m E = 0.012 m	PI STA = 11+137.875 N = 49708.214 E = 4984.456 Δ = 1° 37' 19" (LT) R = 200.000 m T = 2.831 m L = 5.662 m E = 0.020 m	PI STA = 11+172.259 N = 49673.875 E = 4982.691 Δ = 8° 36' 11" (LT) R = 30.000 m T = 2.257 m L = 4.505 m E = 0.085 m	PI STA = 11+191.564 N = 49654.655 E = 4984.596 Δ = 8° 01' 23" (RT) R = 30.000 m T = 2.104 m L = 4.201 m E = 0.074 m	PI STA = 11+354.407 N = 49491.944 E = 4977.882 Δ = 91° 04' 47" (LT) R = 30.000 m T = 30.571 m L = 47.689 m E = 12.832 m

SECTION	COUNTY	TOTAL SHEETS	SHEET NO.
02-00090-00-BT	DUPAGE	117	19
STA. TO STA.			
IDOT PROJECT NO. M-8003(222)			
SALT CREEK GREENWAY TRAIL			
CONTRACT NO. 83713			



FOR LEGEND SEE SHEET NO. 14



**URS** 1701 GOLF ROAD, SUITE 1000 TEL (847) 228-0707  
ROLLING MEADOWS, IL 60008 FAX (847) 228-1115

VILLAGE OF ADDISON  
**SALT CREEK GREENWAY TRAIL  
PLAN & PROFILE  
STA. 11+075 TO STA. 11+425**

NO.	NAME	DATE

DATE: 5/10/06 DRAWN BY: MIA&VAP  
DESIGNED BY: MIA CHECKED BY: DDL