

**PROP. CURVE CL1-66**  
 PI STA = 11+806.542  
 N = 49,271.175  
 E = 5,321.790  
 $\Delta = 39^\circ 21' 58''$  (LT)  
 R = 30.000 m  
 T = 10.732 m  
 L = 20.612 m  
 E = 1.862 m

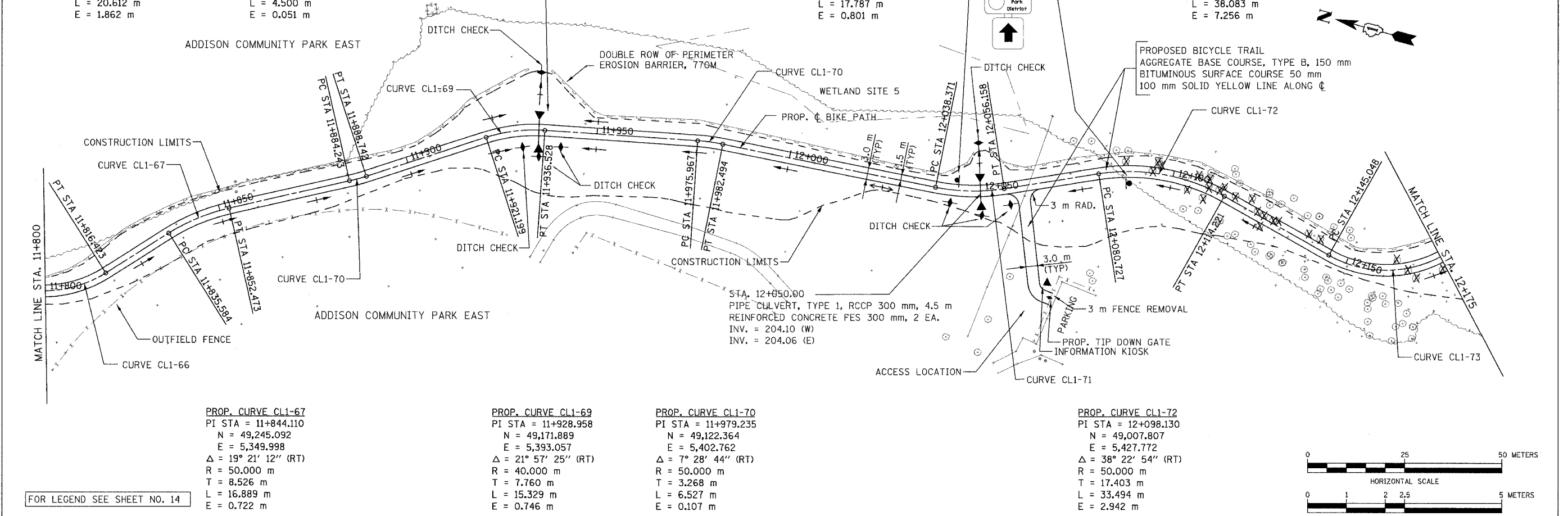
**PROP. CURVE CL1-68**  
 PI STA = 11+886.494  
 N = 49,207.487  
 E = 5,369.899  
 $\Delta = 5^\circ 09' 22''$  (LT)  
 R = 50.000 m  
 T = 2.251 m  
 L = 4.500 m  
 E = 0.051 m

STA. 11+935.00  
 PIPE CULVERT, TYPE 1, RCCP 300 mm, 4.5 m  
 REINFORCED CONCRETE FES, 300 mm, 2 EA.  
 INV. = 203.85 (W)  
 INV. = 203.82 (E)

**PROP. CURVE CL1-71**  
 PI STA = 12+047.359  
 N = 49,054.365  
 E = 5,407.051  
 $\Delta = 20^\circ 22' 56''$  (LT)  
 R = 50.000 m  
 T = 8.988 m  
 L = 17.787 m  
 E = 0.801 m

**PROP. CURVE CL1-73**  
 PI STA = 12+167.138  
 N = 48,939.694  
 E = 5,410.295  
 $\Delta = 72^\circ 43' 57''$  (LT)  
 R = 30.000 m  
 T = 22.091 m  
 L = 38.083 m  
 E = 7.256 m

SECTION	COUNTY	TOTAL SHEETS	SHEET NO.
02-00090-00-BT	DUPAGE	117	21
STA. TO STA.			
IDOT PROJECT NO. M-8003(222)			
SALT CREEK GREENWAY TRAIL		CONTRACT NO. 83713	

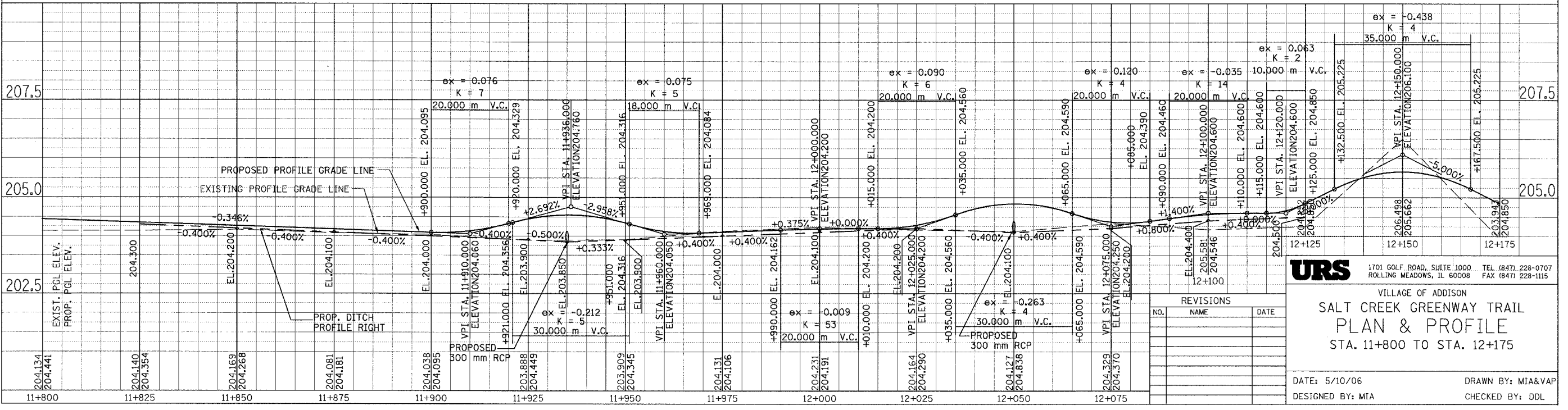
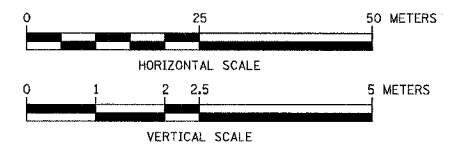


**PROP. CURVE CL1-67**  
 PI STA = 11+844.110  
 N = 49,245.092  
 E = 5,349.998  
 $\Delta = 19^\circ 21' 12''$  (RT)  
 R = 50.000 m  
 T = 8.526 m  
 L = 16.889 m  
 E = 0.722 m

**PROP. CURVE CL1-69**  
 PI STA = 11+928.958  
 N = 49,171.889  
 E = 5,393.057  
 $\Delta = 21^\circ 57' 25''$  (RT)  
 R = 40.000 m  
 T = 7.760 m  
 L = 15.329 m  
 E = 0.746 m

**PROP. CURVE CL1-70**  
 PI STA = 11+979.235  
 N = 49,122.364  
 E = 5,402.762  
 $\Delta = 7^\circ 28' 44''$  (RT)  
 R = 50.000 m  
 T = 3.268 m  
 L = 6.527 m  
 E = 0.107 m

**PROP. CURVE CL1-72**  
 PI STA = 12+098.130  
 N = 49,007.807  
 E = 5,427.772  
 $\Delta = 38^\circ 22' 54''$  (RT)  
 R = 50.000 m  
 T = 17.403 m  
 L = 33.494 m  
 E = 2.942 m



**URS** 1701 GOLF ROAD, SUITE 1000 TEL (847) 228-0707  
 ROLLING MEADOWS, IL 60008 FAX (847) 228-1115

VILLAGE OF ADDISON  
**SALT CREEK GREENWAY TRAIL  
 PLAN & PROFILE**  
 STA. 11+800 TO STA. 12+175

DATE: 5/10/06 DRAWN BY: MIA&VAP  
 DESIGNED BY: MIA CHECKED BY: DDL

NO.	NAME	DATE

FOR LEGEND SEE SHEET NO. 14