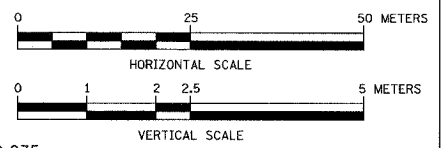
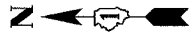
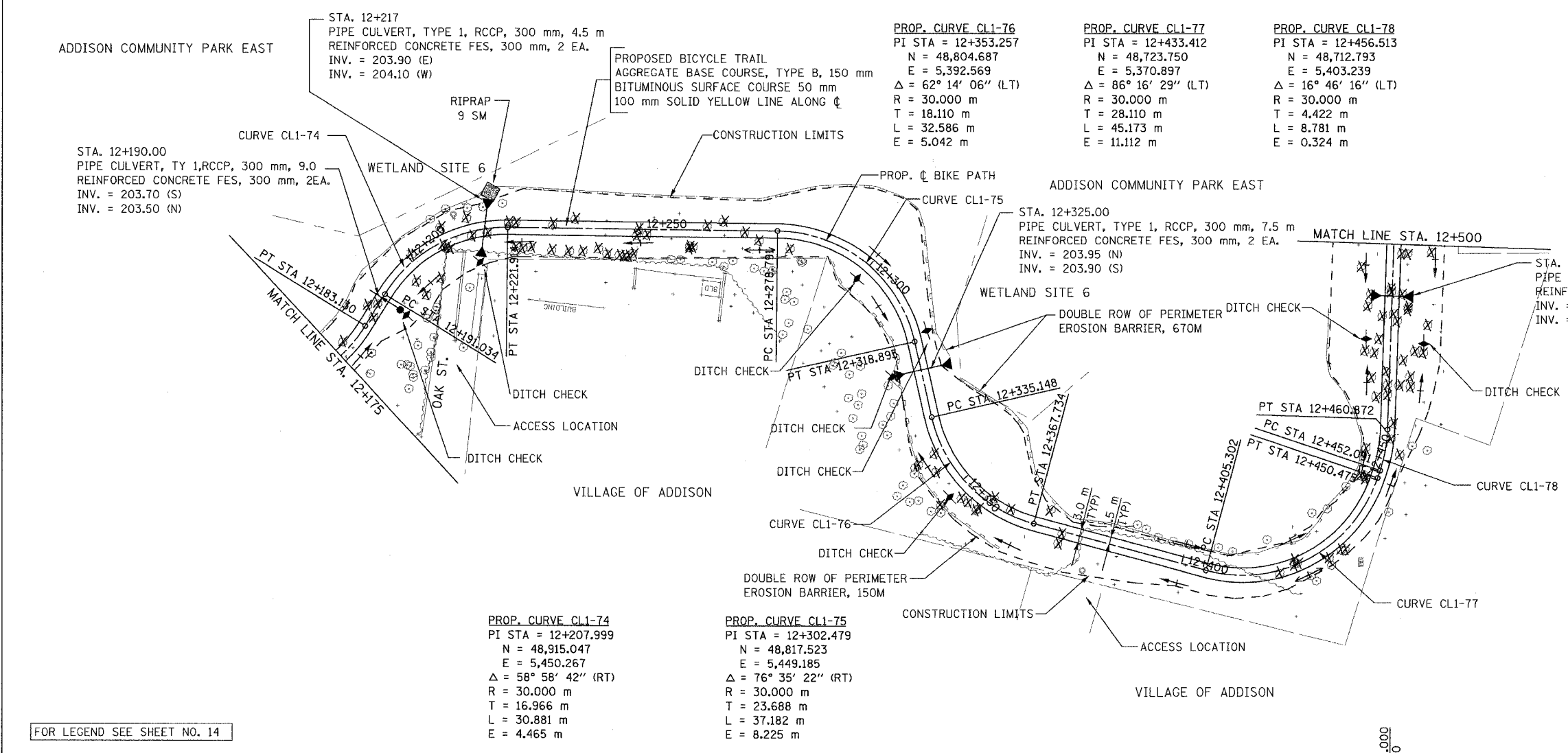
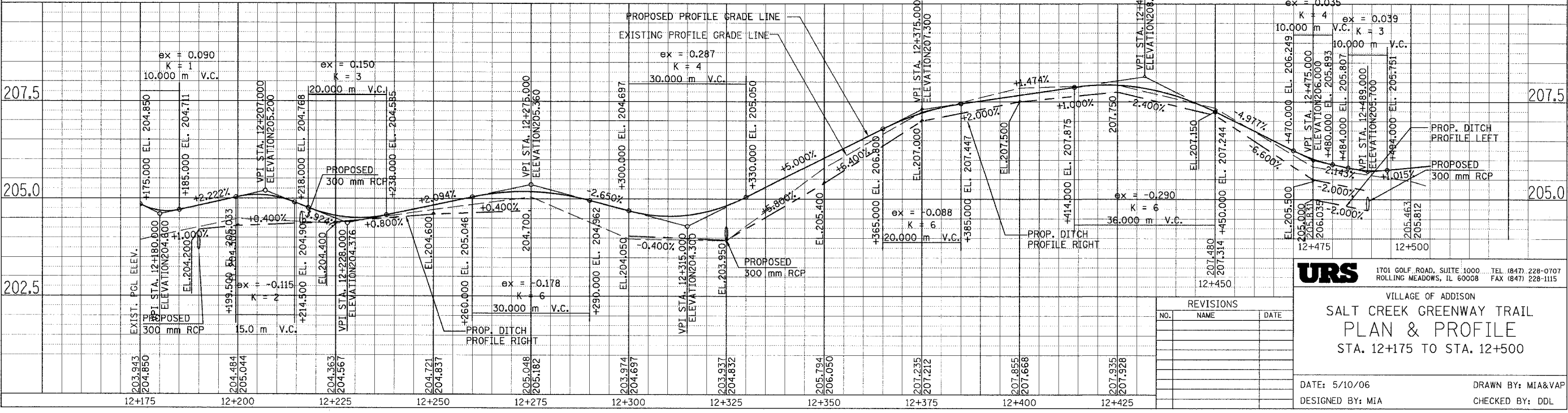


SECTION	COUNTY	TOTAL SHEETS	SHEET NO.
02-00090-00-BT	DUPAGE	117	22
STA. TO STA.			
IDOT PROJECT NO. M-8003(222)			
SALT CREEK GREENWAY TRAIL			
CONTRACT NO. 83713			



FOR LEGEND SEE SHEET NO. 14

PROP. CURVE CL1-74 PI STA = 12+207.999 N = 48,915.047 E = 5,450.267 $\Delta = 58^\circ 58' 42''$ (RT) R = 30.000 m T = 16.966 m L = 30.881 m E = 4.465 m	PROP. CURVE CL1-75 PI STA = 12+302.479 N = 48,817.523 E = 5,449.185 $\Delta = 76^\circ 35' 22''$ (RT) R = 30.000 m T = 23.688 m L = 37.182 m E = 8.225 m
---	---



REVISIONS		
NO.	NAME	DATE

URS
 1701 GOLF ROAD, SUITE 1000 TEL (847) 228-0707
 ROLLING MEADOWS, IL 60008 FAX (847) 228-1115

VILLAGE OF ADDISON
**SALT CREEK GREENWAY TRAIL
 PLAN & PROFILE**
 STA. 12+175 TO STA. 12+500

DATE: 5/10/06 DRAWN BY: MIA&VAP
 DESIGNED BY: MIA CHECKED BY: DDL