

PROP. CURVE CL2-21
 PI STA = 13+981.797
 N = 47,830.267
 E = 6,195.983
 $\Delta = 16^\circ 30' 57''$ (LT)
 R = 45,000 m
 T = 6,528 m
 L = 12,966 m
 E = 0.471 m

PROP. CURVE CL2-22
 PI STA = 14+020.102
 N = 47,796.856
 E = 6,214.901
 $\Delta = 57^\circ 44' 22''$ (LT)
 R = 55,000 m
 T = 30,324 m
 L = 55,426 m
 E = 7.805 m

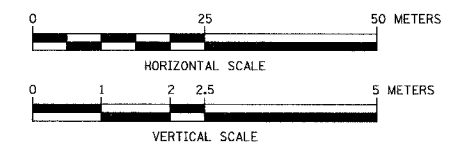
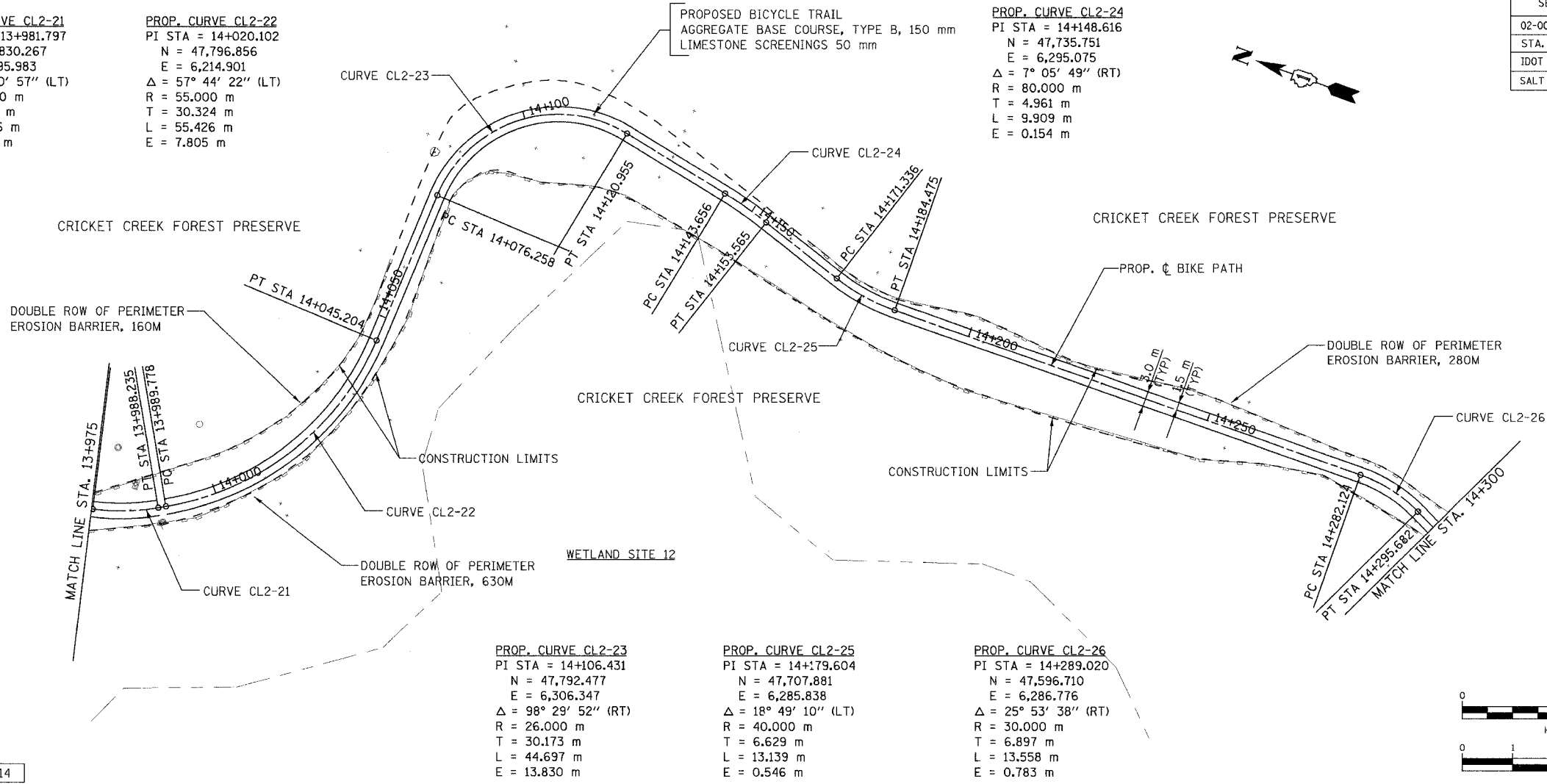
PROP. CURVE CL2-24
 PI STA = 14+148.616
 N = 47,735.751
 E = 6,295.075
 $\Delta = 7^\circ 05' 49''$ (RT)
 R = 80,000 m
 T = 4,961 m
 L = 9,909 m
 E = 0.154 m

PROP. CURVE CL2-23
 PI STA = 14+106.431
 N = 47,792.477
 E = 6,306.347
 $\Delta = 98^\circ 29' 52''$ (RT)
 R = 26,000 m
 T = 30.173 m
 L = 44.697 m
 E = 13.830 m

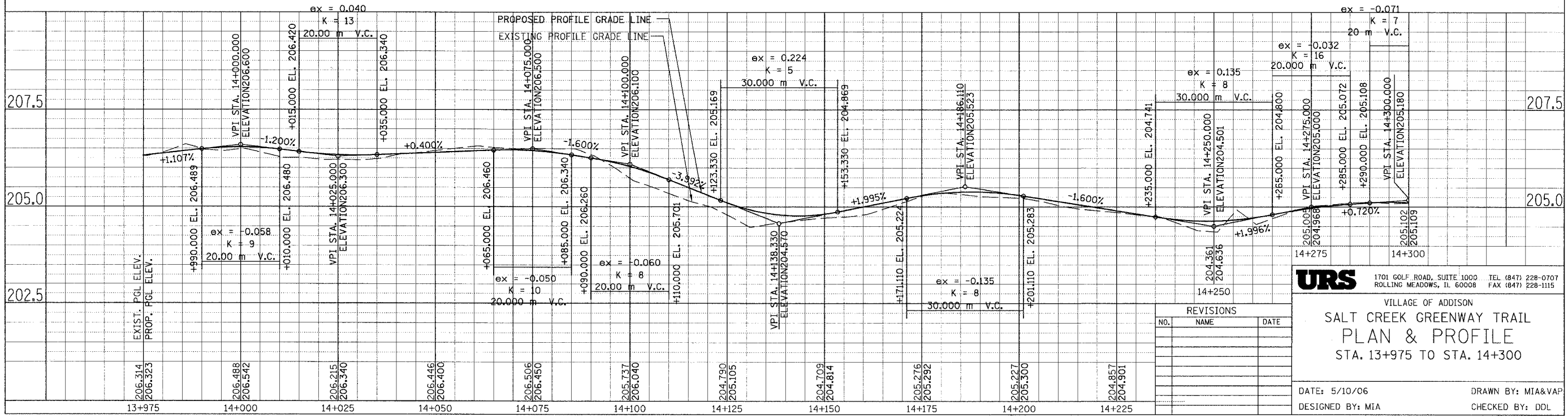
PROP. CURVE CL2-25
 PI STA = 14+179.604
 N = 47,707.881
 E = 6,285.838
 $\Delta = 18^\circ 49' 10''$ (LT)
 R = 40,000 m
 T = 6.629 m
 L = 13.139 m
 E = 0.546 m

PROP. CURVE CL2-26
 PI STA = 14+289.020
 N = 47,596.710
 E = 6,286.776
 $\Delta = 25^\circ 53' 38''$ (RT)
 R = 30,000 m
 T = 6.897 m
 L = 13.558 m
 E = 0.783 m

SECTION	COUNTY	TOTAL SHEETS	SHEET NO.
02-00090-00-BT	DUPAGE	117	27
STA.	TO STA.		
IDOT PROJECT NO. M-8003(222)			
SALT CREEK GREENWAY TRAIL			
CONTRACT NO. 83713			



FOR LEGEND SEE SHEET NO. 14



URS 1701 GOLF ROAD, SUITE 1000 TEL (847) 228-0707
 ROLLING MEADOWS, IL 60008 FAX (847) 228-1115

VILLAGE OF ADDISON
SALT CREEK GREENWAY TRAIL
PLAN & PROFILE
 STA. 13+975 TO STA. 14+300

NO.	NAME	DATE

DATE: 5/10/06 DRAWN BY: MIA&VAP
 DESIGNED BY: MIA CHECKED BY: DDL