

|                       |                |                  |              |           |
|-----------------------|----------------|------------------|--------------|-----------|
| F.A.U. RTE.           | SECTION        | COUNTY           | TOTAL SHEETS | SHEET NO. |
|                       | 00-00094-03-BR | COOK             | 84-73        | 1         |
| FED. ROAD DIST. NO. 1 | ILLINOIS       | FED. AID PROJECT |              |           |
| CONTRACT NO. 83850    |                |                  |              |           |

STATE OF ILLINOIS  
DEPARTMENT OF TRANSPORTATION  
PLANS FOR

**PROPOSED LOCAL AGENCY IMPROVEMENT  
FEDERAL-AID URBAN PROJECT**

FOR INDEX OF SHEETS, SEE SHEET NO. 2

**DESIGN DESIGNATION**

**ELDORADO STREET**  
LOCAL TYPE TS-3  
DESIGN SPEED = 30 MPH  
POSTED SPEED = 25 MPH

**PINE STREET**  
LOCAL TYPE TS-2  
DESIGN SPEED = 30 MPH  
POSTED SPEED = 25 MPH

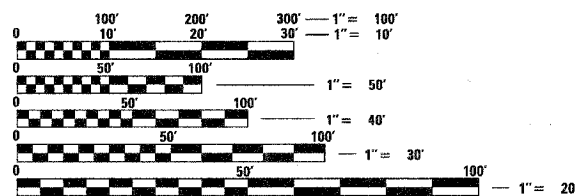
**SECTION 00-00094-03-BR  
PROJECT NO.: BHOS 00D1 (556)  
PINE STREET OVER UNION PACIFIC RAILROAD  
ELDORADO STREET OVER UNION PACIFIC RAILROAD  
STRUCTURE REPLACEMENT  
VILLAGE OF WINNETKA  
COOK COUNTY  
C-91-182-00**

**TRAFFIC DATA**

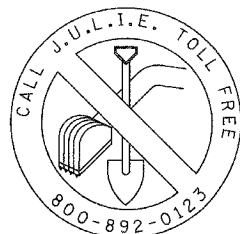
|                           |                            |
|---------------------------|----------------------------|
| <b>ELDORADO STREET</b>    | <b>PINE STREET</b>         |
| EXISTING ADT = 591 (2002) | EXISTING ADT = 2935 (2002) |
| PROPOSED ADT = 710 (2023) | PROPOSED ADT = 3525 (2023) |

**SCALES**

|                |                                   |
|----------------|-----------------------------------|
| PLAN           | 1 : 50                            |
| PROFILE HORIZ. | 1 : 50                            |
| PROFILE VERT.  | 1 : 5                             |
| CROSS SECTIONS | 1 : 10 HORIZONTAL, 1 : 5 VERTICAL |



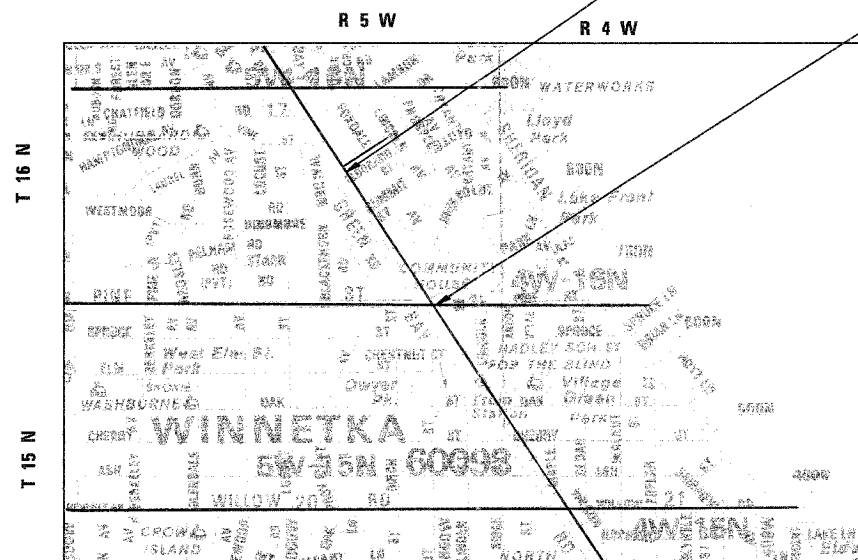
FULL SIZE PLANS HAVE BEEN PREPARED USING STANDARD ENGINEERING SCALES, REDUCED SIZED PLANS WILL NOT CONFORM TO STANDARD SCALES, IN MAKING MEASUREMENTS ON REDUCED PLANS, THE ABOVE SCALES MAY BE USED.



48 - HOURS BEFORE DIGGING

CONTRACT NO. 83850

J.U.L.I.E.  
JOINT UTILITY LOCATION INFORMATION FOR EXCAVATION  
1-800-892-0123



LOCATION MAP  
NOT TO SCALE

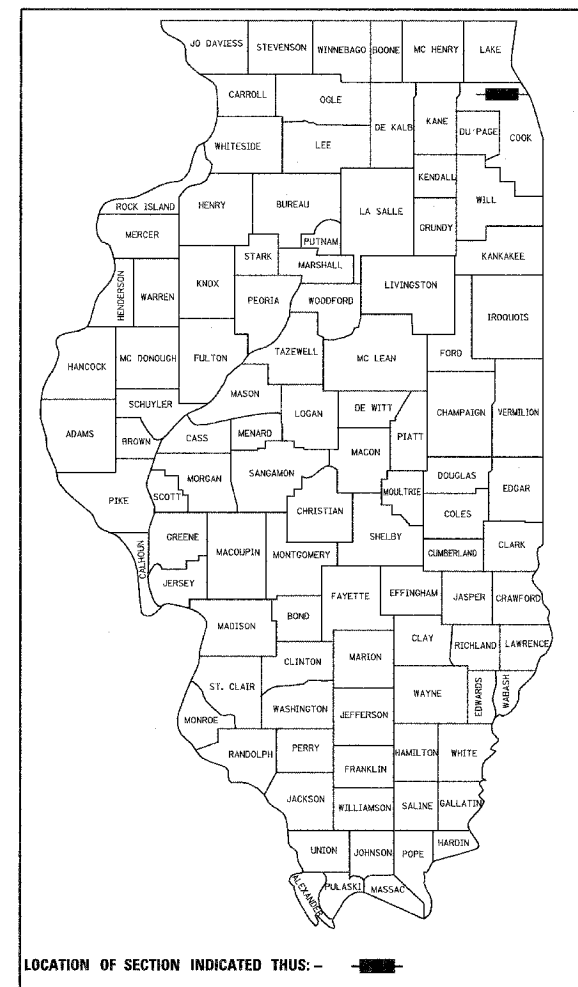
GROSS AND NET LENGTH OF PROJECT  
ELDORADO = 240 FT = 0.05 MI  
PINE = 300 FT = 0.06 MI

ELDORADO STREET BRIDGE  
SN 016-8260  
STA. 200+00 - STA. 202+40

PINE STREET BRIDGE  
SN 016-8259  
STA. 100+00 - STA. 103+00

**ELDORADO STREET OVER UNION PACIFIC RAILROAD**  
STRUCTURE NO. 016-8260  
REMOVE EXISTING FOUR SPAN BRIDGE SUPERSTRUCTURE AND REPLACE WITH STEEL BEAM CONTINUOUS SUPERSTRUCTURE AND CONCRETE DECK. REPAIR EXISTING ABUTMENTS AND PIERS.

**PINE STREET OVER UNION PACIFIC RAILROAD**  
STRUCTURE NO. 016-8259  
REMOVE EXISTING FOUR SPAN BRIDGE SUPERSTRUCTURE AND REPLACE WITH STEEL BEAM CONTINUOUS SUPERSTRUCTURE AND CONCRETE DECK. REPAIR EXISTING ABUTMENTS AND PIERS.

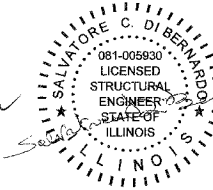


APPROVED *March 8* 2006  
*Steven M. Sanderson*  
DIRECTOR OF PUBLIC WORKS / VILLAGE ENGINEER  
VILLAGE OF WINNETKA

PASSED *April 11* 2006  
*Chris Holt*  
DISTRICT ENGINEER OF LOCAL ROAD & STREETS

SIGNED *April 11* 2006  
*Diane M. O'Keefe*  
DEPUTY DIRECTOR OF HIGHWAYS, REGION ENGINEER

STATE OF ILLINOIS  
DEPARTMENT OF TRANSPORTATION



**Ciorba Group, Inc.**

DESIGN FIRM  
REGISTRATION NUMBER  
184-001016

CONSULTING ENGINEERS  
SUITE 402, 5507 NORTH CUMBERLAND AVE  
CHICAGO, ILLINOIS 60656 :: (773) 775-4009

PLANS PREPARED BY: CIORBA GROUP  
PRINTED BY THE AUTHORITY OF THE STATE OF ILLINOIS

IDOT FEDERAL AID DESIGN ENGINEER: JESSICA MILLER (847) 705-4487  
CONSULTANT: CIORBA GROUP, INC. (773) 775-4009

DATE: 3/8/2006  
SEAL EXPIRES: 11/30/2007

DATE: 3/8/2006  
SEAL EXPIRES: 11/30/2006