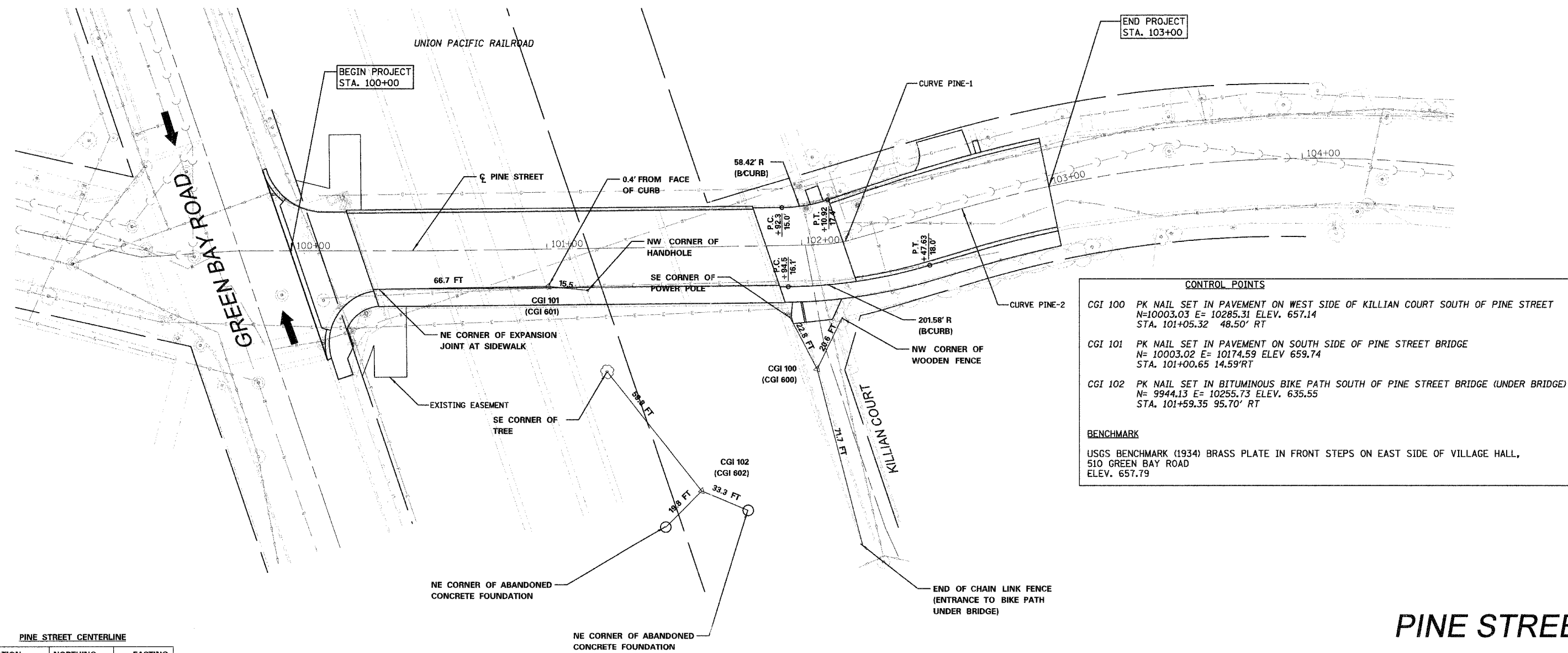


F.A. RTE.	SECTION	COUNTY	TOTAL SHEETS	SHEET NO.
	DO-00094-03-BR	COOK	69	7
STA. 100+00		TO STA. 103+00		
FED. ROAD DIST. NO.	ILLINOIS	FED. AID PROJECT		
CONTRACT NO. 83850				

P.I. STA 99+79.54  
N= 9981.99  
E= 10055.19

CURVE PINE-1  
P.I. STA= 102+09.82  
Δ= 15°59'55.27"  
D= 57°17'44.81"  
R= 100.00  
T= 14.05  
L= 27.92  
E= 0.98  
S.E. RUN= N/A  
P.C. STA= 101+95.77  
P.T. STA= 102+23.69

CURVE PINE-2  
P.I. STA= 103+32.79  
Δ= 17°45'50.89"  
D= 12°43'56.62"  
R= 450.0  
T= 70.32  
L= 139.52  
E= 5.46  
S.E. RUN= N/A  
P.C. STA= 102+62.47  
P.T. STA= 104+01.99



**CONTROL POINTS**

CGI 100 PK NAIL SET IN PAVEMENT ON WEST SIDE OF KILLIAN COURT SOUTH OF PINE STREET  
N=10003.03 E= 10285.31 ELEV. 657.14  
STA. 101+05.32 48.50' RT

CGI 101 PK NAIL SET IN PAVEMENT ON SOUTH SIDE OF PINE STREET BRIDGE  
N= 10003.02 E= 10174.59 ELEV 659.74  
STA. 101+00.65 14.59' RT

CGI 102 PK NAIL SET IN BITUMINOUS BIKE PATH SOUTH OF PINE STREET BRIDGE (UNDER BRIDGE)  
N= 9944.13 E= 10255.73 ELEV. 635.55  
STA. 101+59.35 95.70' RT

**BENCHMARK**

USGS BENCHMARK (1934) BRASS PLATE IN FRONT STEPS ON EAST SIDE OF VILLAGE HALL,  
510 GREEN BAY ROAD  
ELEV. 657.79

PINE STREET CENTERLINE

STATION	NORTHING	EASTING
100 + 00	9988.00	10074.75
101 + 95.77 (PC)	10045.52	10261.88
102 + 23.69 (PT)	10057.32	10287.08
102 + 62.47 (PC)	10078.49	10319.59
103 + 00	10097.65	10351.84
104 + 01.99 (PT)	10135.47	10446.32

REVISIONS	
NAME	DATE

# PINE STREET

**Clorba Group, Inc.**  
CONSULTING ENGINEERS  
5507 North Cumberland Avenue, Suite 402 Chicago, Illinois 60656  
Tel. 773.775.4009 Fax 773.775.4014 Email: chicago@clorba.com

VILLAGE OF WINNETKA  
PINE STREET OVER UNION PACIFIC R.R.  
ALIGNMENT, TIES & BENCHMARKS

SCALE: 1"=20'  
DATE: MARCH 2006  
DRAWN BY: EAB  
CHECKED BY: MRJ