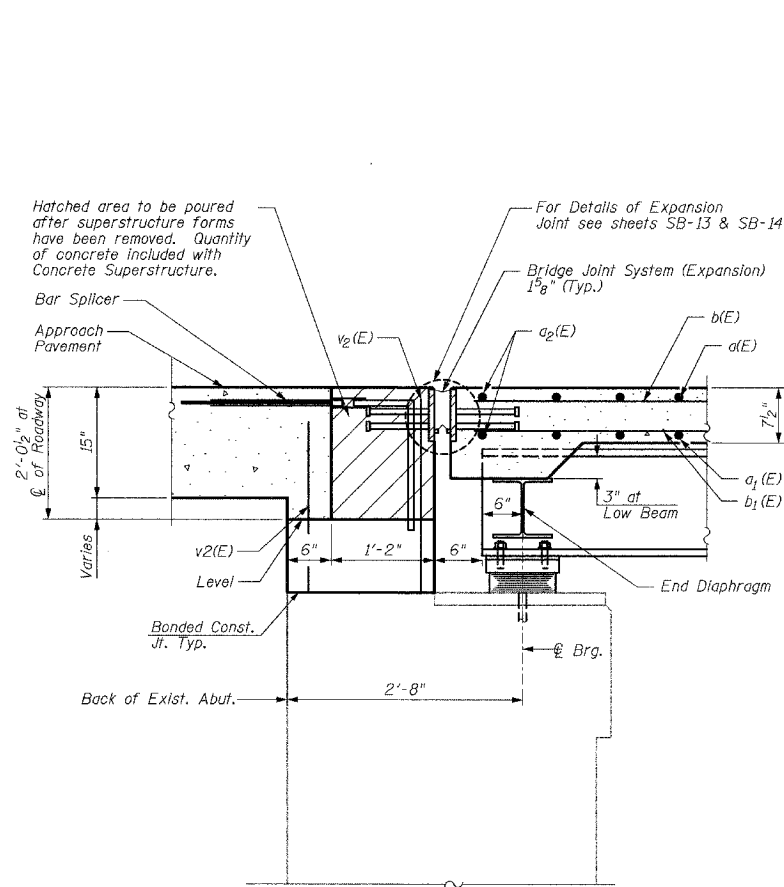
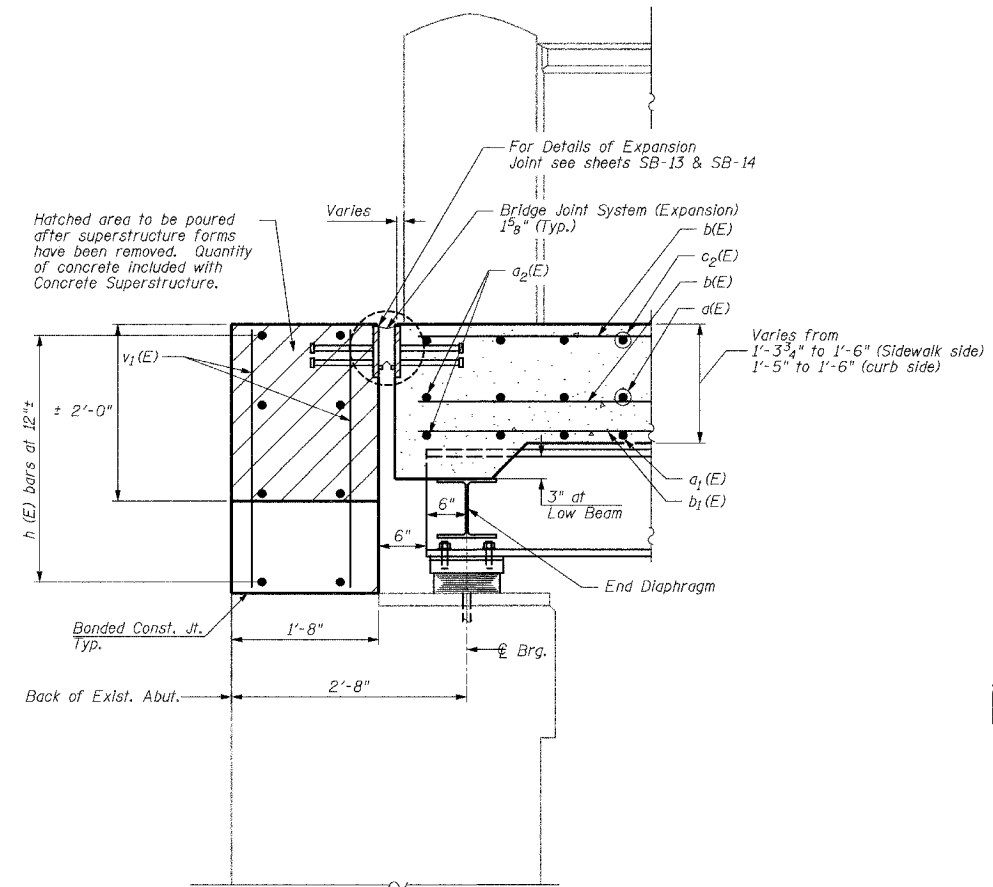


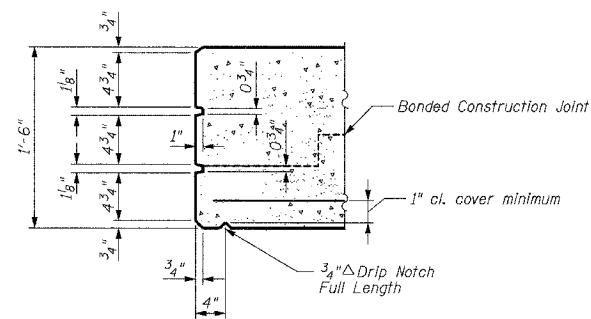
F.A. RTE.	SECTION	COUNTY	TOTAL SHEETS	SHEET NO.
	00-00094-03-BR	COOK	69	27
STA.	TO STA.			
FED. ROAD DIST. NO. 1	ILLINOIS	FED. AID PROJECT		
Sheet SA-8 of SA-23			CONTRACT	83850



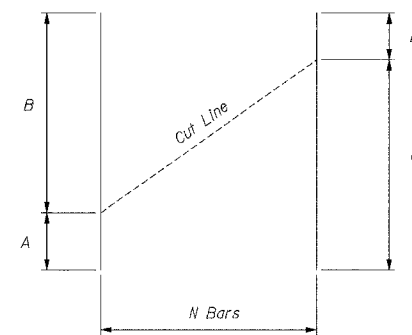
**SECTION A-A**  
(All Dimensions are Perpendicular to Abutment)



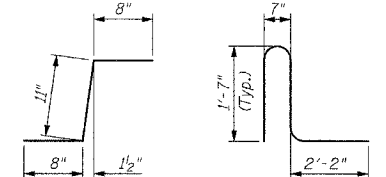
**SECTION B-B**  
(All Dimensions are Perpendicular to Abutment)



**TYPICAL COPING DETAIL**



Bar	A	B	C	D	N
a(E)	1'-2"	18'-4"	18'-4"	1'-2"	14
a1(E)	3'-1"	10'-5"	10'-5"	3'-1"	12
c1(E)	2'-7"	3'-10"	3'-10"	2'-7"	2



**BAR c(E)**      **BAR d(E)**

Bar	No.	Size	Length	Shape
a(E)	376	#5	19'-6"	—
a1(E)	471	#5	13'-6"	—
a2(E)	8	#5	20'-6"	—
b(E)	294	#5	27'-3"	—
b1(E)	266	#5	23'-6"	—
b2(E)	38	#6	24'-9"	—
b3(E)	38	#6	20'-6"	—
b4(E)	38	#6	23'-1"	—
c(E)	157	#5	2'-5"	—
c1(E)	157	#5	6'-5"	—
d(E)	320	#5	5'-11"	—
Reinforcement Bars, Epoxy Coated			Pound	36,647
Concrete Superstructures Cu. Yd.				181.3

Notes:  
Reinforcement bars designated (E) shall be epoxy coated.  
Bars indicated thus 1x2-#5 etc. indicated 1 line of bars with 2 lengths per line.  
Work this sheet with sheets SA-18 thru SA-20.

**CC** Clorba Group, Inc.  
CONSULTING ENGINEERS  
3001 NORTH CUMBERLAND AVENUE • CHICAGO, ILLINOIS 60630 • (773) 775-6000

VILLAGE OF WINNETKA, ILLINOIS  
DECK DETAILS  
PINE STREET OVER THE UNION PACIFIC R.R.  
R.R. MILE POST 16.89 KENOSHA SUBDIVISION  
COOK COUNTY STA. 101+09.96  
STRUCTURE NO. 016-8259

SCALE: NONE  
DATE: JUNE 2006  
FILE: 3278  
DRAWN BY: RCD  
DESIGN BY: BWS  
CHECKED BY: SCD

REVISIONS	
NAME	DATE

DATE: 7/20/2006  
FILENAME: N:\PROJ\3278\Draw\Design\Structural\_Pine\_8278\CAD\Final\_plan\_rev\8278-Pine-dlset02.dgn