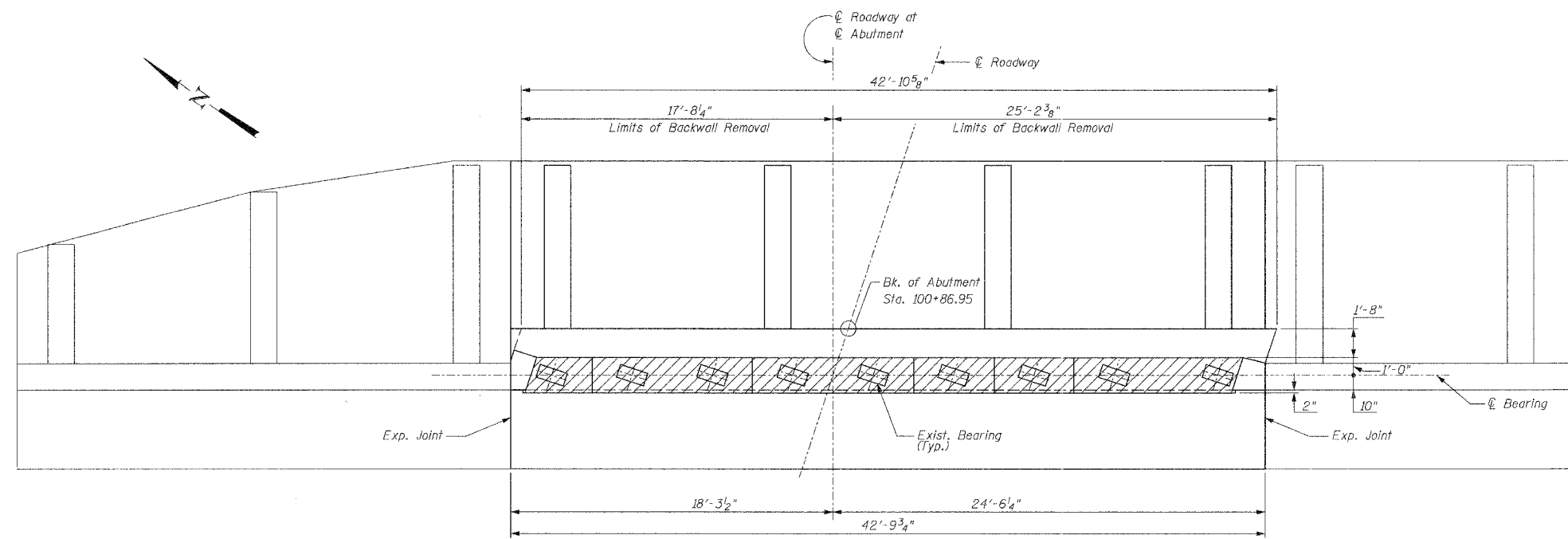


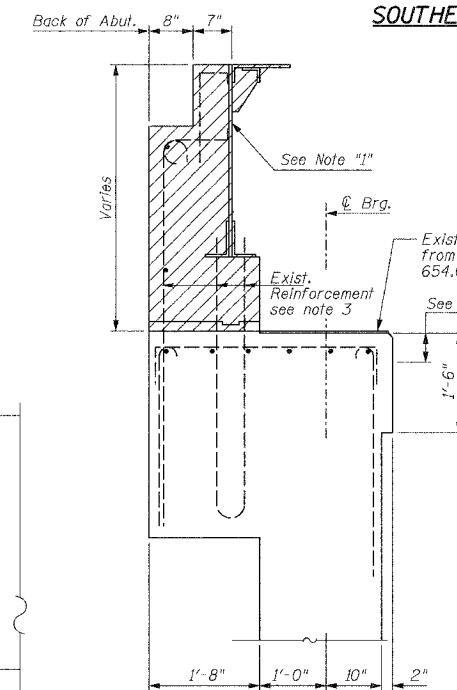
NORTHEAST WINGWALL

EAST ABUTMENT ELEVATION

SOUTHEAST WINGWALL



EAST ABUTMENT PLAN



SECTION A-A (EXISTING CONDITION)

LEGEND:

- Concrete Removal
- Formed Concrete Repair
- Epoxy Crack Sealing

BILL OF MATERIAL

Item	Unit	Quantity
Epoxy Crack Sealing	Lin. Ft.	23
Formed Concrete Repair	Sq. Ft.	42
Concrete Removal	Cubic Yards	7.8

NOTES:

1. Removal of existing steel plates and bars in abutment backwall incidental to "Concrete Removal"
2. Remove existing bearing seat and concrete to completely uncover top bars.
3. Existing reinforcement extending into new construction shall be cleaned, straightened and incorporated into new construction. Cost shall be included with Concrete Removal.

REVISIONS	
NAME	DATE

CC Ciorba Group, Inc.
CONSULTING ENGINEERS
5507 NORTH CUMBERLAND AVENUE :: CHICAGO, ILLINOIS 60656 :: (773) 775-4009

VILLAGE OF WINNETKA, ILLINOIS
EAST ABUTMENT REMOVAL AND REPAIRS
PINE STREET OVER THE UNION PACIFIC R.R.
R.R. MILE POST 16.89 KENOSHA SUBDIVISION
COOK COUNTY STA. 101+09.96
STRUCTURE NO. 016-8259

SCALE: NONE
DATE: MARCH 2006
FILE: 3278

DRAWN BY: RCD
DESIGN BY: BWS
CHECKED BY: SCD