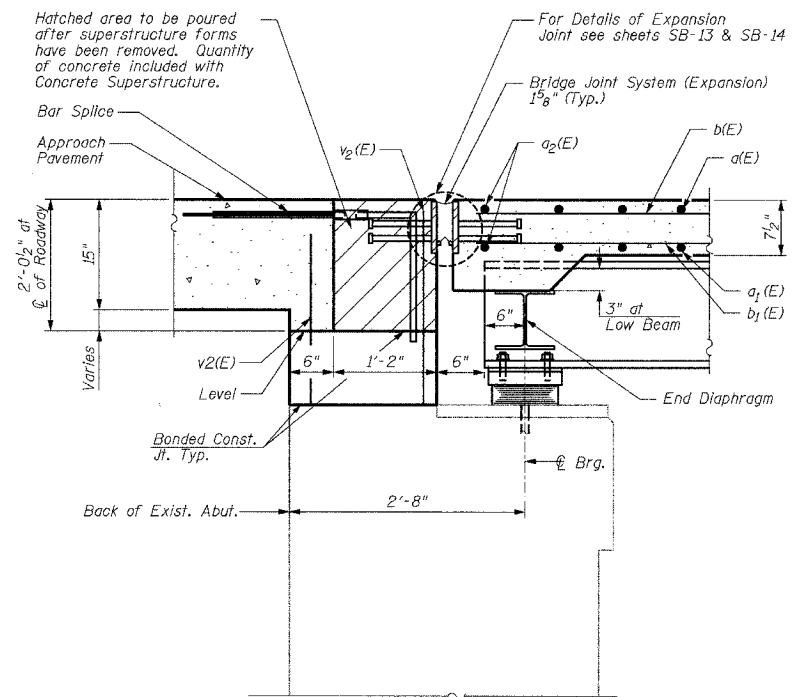
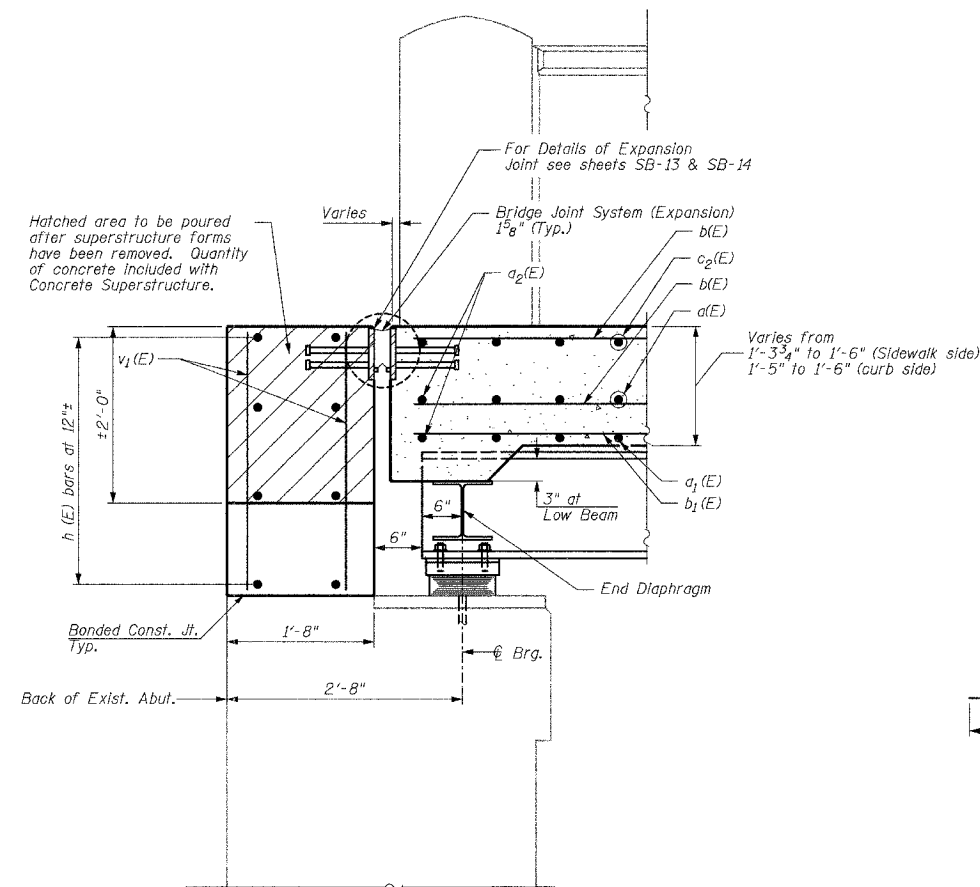


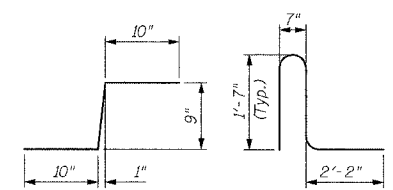
F.A. RTE.	SECTION	COUNTY	TOTAL SHEETS	SHEET NO.
	00-00094-03-BR	COOK	69	49
STA.		TO STA.		
FED. ROAD DIST. NO. 1		ILLINOIS FED. AID PROJECT		
Sheet SB-7 of SB-22		CONTRACT 83850		



SECTION A-A

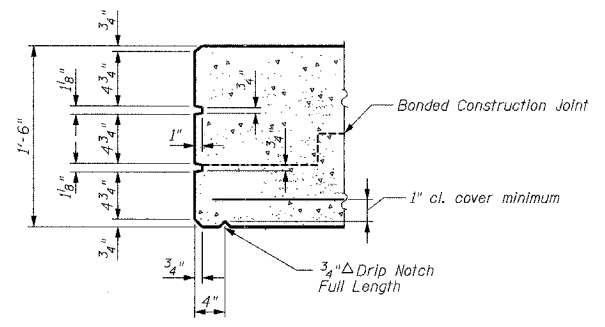


SECTION B-B



BAR c(E) BAR d(E)

Bar	No.	Size	Length	Shape
a(E)	145	#5	29'-8"	—
a1(E)	174	#5	29'-8"	—
a2(E)	4	#5	29'-8"	—
b(E)	205	#5	30'-2"	—
b1(E)	180	#5	25'-5"	—
b2(E)	90	#6	24'-0"	—
c(E)	145	#5	2'-5"	⌋
c1(E)	145	#5	6'-5"	—
d(E)	290	#5	5'-11"	⌋
Reinforcement Bars, Epoxy Coated			Pound	27,588
Concrete Superstructure			Cu. Yd.	144.2



TYPICAL COPING DETAIL

Notes:  
 Reinforcement bars designated (E) shall be epoxy coated.  
 For Backwall Reinforcement Bars see Sheet SB-19.  
 For bar splicer detail see Sheet SB-21.  
 Bars indicated thus 1x2-#5 etc. indicated 1 line of bars with 2 lengths per line.  
 Work this sheet with Sheets SB-17 thru SB-19.

**CC** Ciorba Group, Inc.  
 CONSULTING ENGINEERS  
 1607 NORTH CUMBERLAND AVENUE • CHICAGO, ILLINOIS 60610 • (773) 775-4000

VILLAGE OF WINNETKA, ILLINOIS  
 DECK DETAILS  
 ELDORADO STREET OVER THE UNION PACIFIC R.R.  
 R.R. MILE POST 17.26 KENOSHA SUBDIVISION  
 COOK COUNTY STA. 201+07.21  
 STRUCTURE NO. 016-8260

SCALE: NONE  
 DATE: JUNE 2006  
 FILE: 3278

DRAWN BY: RCD  
 DESIGN BY: BWS  
 CHECKED BY: SCD

REVISIONS	
NAME	DATE

DATE: 7/20/2006  
 FILENAME: N:\PROJ\3278\Eldorado\Design\Structural\Eldorado\_3278\CAD\Final\_revised\3278-eldo-dksee02.dgn