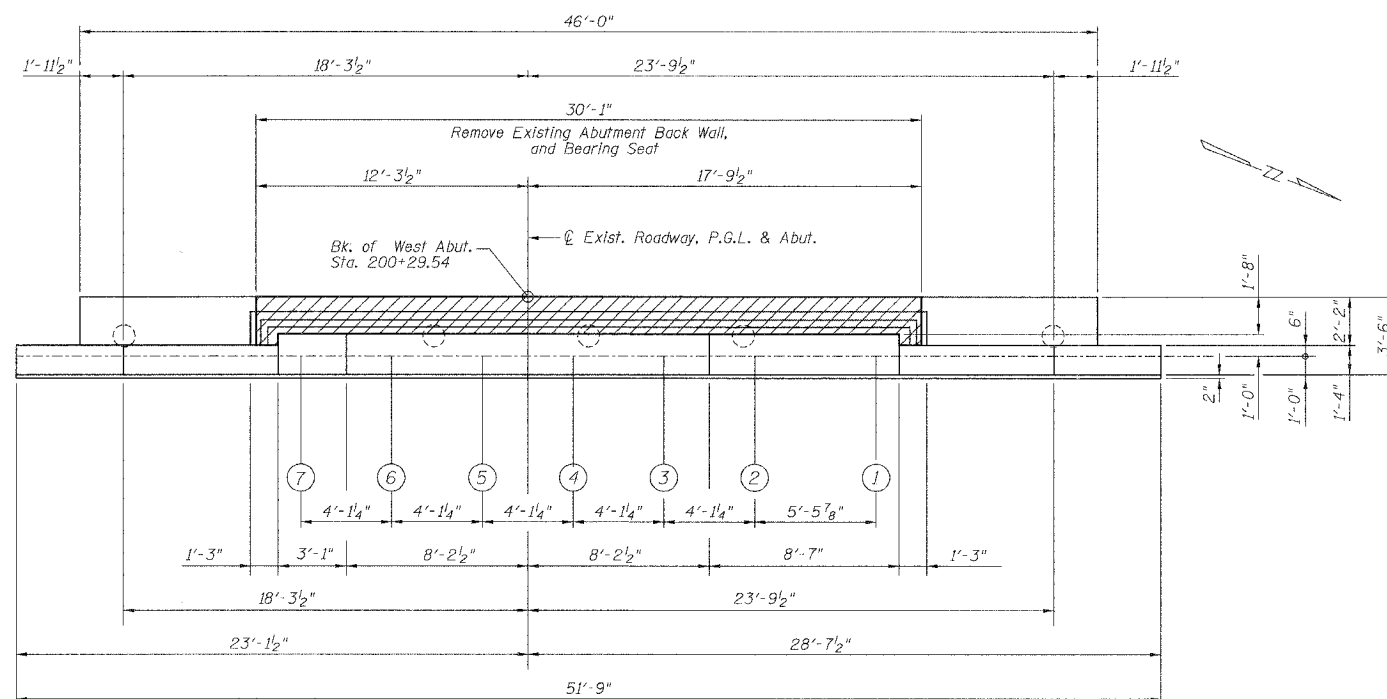
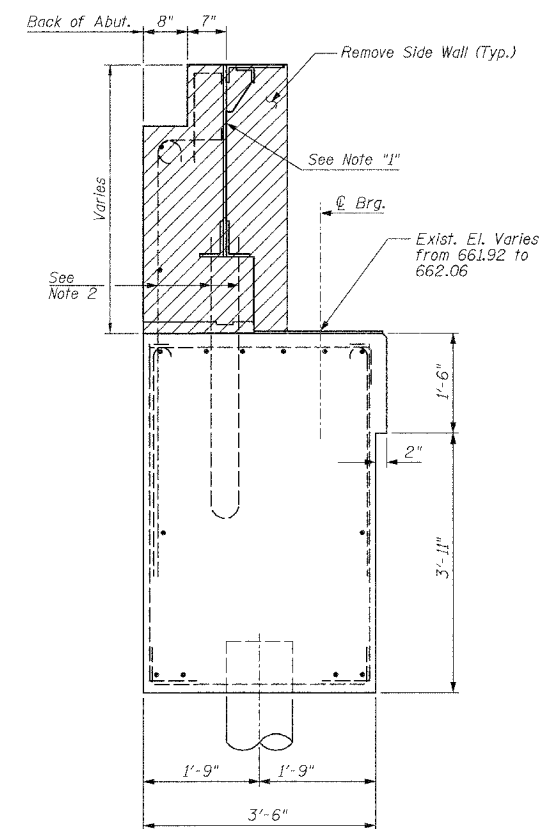


**ELEVATION**  
(Looking west)



**TOP PLAN**



**SECTION A-A**  
(EXISTING CONDITION)

**LEGEND:**

	Concrete Removal
	Formed Concrete Repair
	Epoxy Crack Sealing

**BILL OF MATERIAL**

Item	Unit	Quantity
Formed Concrete Repairs	Sq. Ft.	4.0
Epoxy Crack Sealing	Ft.	3.0
Concrete Removal	Cu. Ft.	5.8

- NOTES:**
1. Removal of existing steel plates and bars in abutment backwall incidental to "Concrete Removal"
  2. Existing reinforcement extending into new construction shall be cleaned, straightened and incorporated into new construction. Cost shall be included with Concrete Removal.
  3. Repair of the existing abutment shall include but not be limited to the areas shown. The actual areas to be repaired will be determined by the Engineer at the time of construction.
  4. Remove backwall to match exist. bearing seat elevations.

DATE: 3/9/2006  
FILENAME: n:\proj\3278\eldorado\design\structural\_eldorado\_3278\_cad\final\_plan\3278\_eldo-wabr01.dgn

REVISIONS	
NAME	DATE

**Ciorba Group, Inc.**  
CONSULTING ENGINEERS  
5507 NORTH CLIMBERLAND AVENUE :: CHICAGO, ILLINOIS 60656 :: (773) 775-4009

VILLAGE OF WINNETKA, ILLINOIS  
WEST ABUTMENT REMOVAL AND REPAIRS  
ELDORADO STREET OVER THE UNION PACIFIC R.R.  
R.R. MILE POST 17.26 KENOSHA SUBDIVISION  
COOK COUNTY STA. 201+07.21  
STRUCTURE NO. 016-8260

SCALE: NONE  
DATE: MARCH 2006  
FILE: 3278

DRAWN BY: RCD  
DESIGN BY: BWS  
CHECKED BY: SCD