

(B14)  
31-1 = 30

FAP RTE.	SECTION	COUNTY	TOTAL SHEETS	SHEET NO.
348	04-00040-00-LS	COOK	31	1
F.H.W.A. REG.	ILLINOIS	PROJECT: F-0348(02B)		
CONTRACT NUMBER 83863				

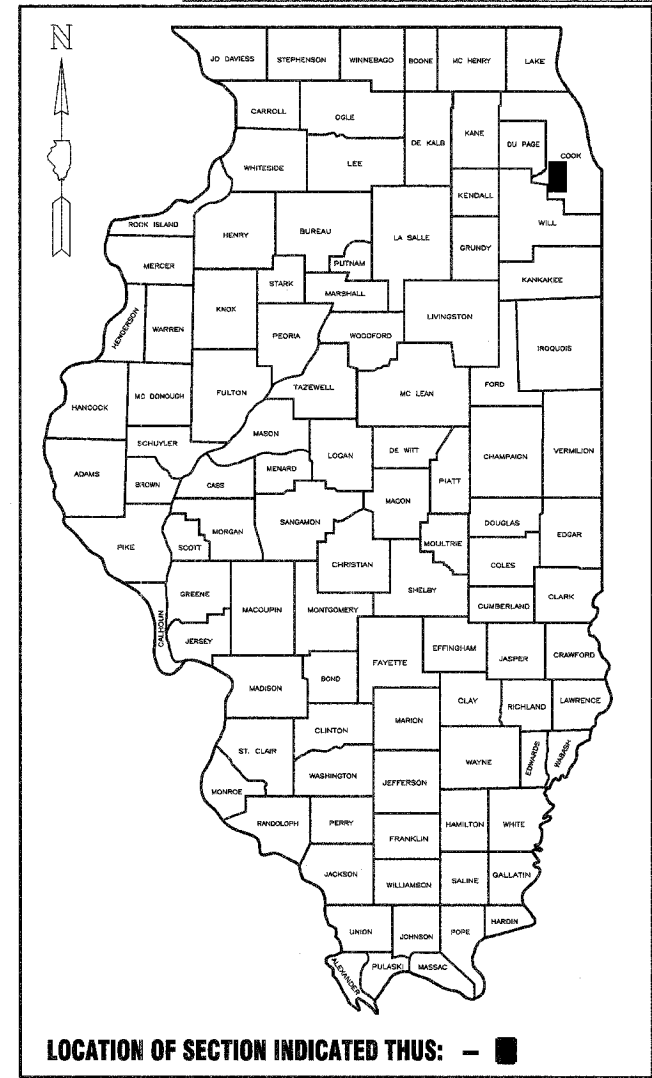
**INDEX TO SHEETS**

1. COVER SHEET, INDEX TO SHEETS, LOCATION MAP, INDEX OF STANDARDS
2. NOTES, STANDARD SYMBOLS
3. SUMMARY OF QUANTITIES
4. TYPICAL SECTIONS
5. ROADWAY PLAN  
HARLEM AVE. FROM 131ST ST. TO 130TH ST.
6. ROADWAY PLAN  
HARLEM AVE. FROM 121ST ST. TO 120TH ST.
- 7-29. CONSTRUCTION DETAILS & STANDARDS
30. CROSS SECTION  
HARLEM AVE. FROM 131ST TO 130TH ST.
31. CROSS SECTION  
HARLEM AVE. FROM 121ST ST. TO 120TH ST.

\* Sheet 14 has been omitted

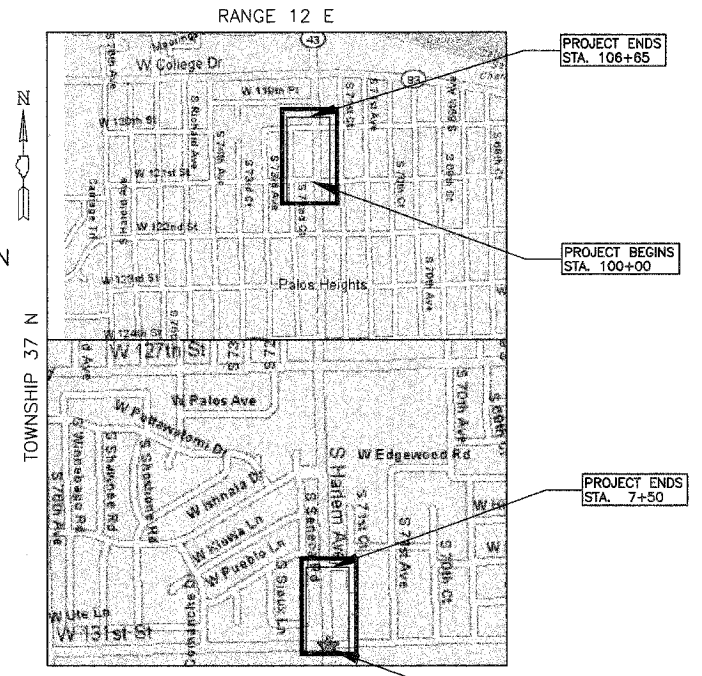
# STATE OF ILLINOIS DEPARTMENT OF TRANSPORTATION DIVISION OF HIGHWAYS PLANS FOR PROPOSED FEDERAL AID URBAN PROJECT

F.A.P 348 (IL 43 / HARLEM AVENUE)  
FROM 131ST ST. TO 130TH ST.  
FROM 121ST ST. TO 120TH ST.  
"LANDSCAPE MEDIAN IMPROVEMENTS"  
SECTION NO. 04-00040-00-LS  
PROJECT F-0348(028)  
JOB NO. C-91-370-04  
CITY OF PALOS HEIGHTS  
COOK COUNTY



**STATE STANDARDS**

- 280001-02 TEMPORARY EROSION CONTROL SYSTEMS
- 606001-02 CONCRETE CURB TYPE B AND COMBINATION CONCRETE CURB & GUTTER
- 701601-04 URBAN LANE CLOSURE MULTILANE 1W OR 2W WITH NON TRAVERSABLE MEDIAN
- 701701-04 URBAN LANE CLOSURE MULTILANE INTERSECTION
- 702001-06 TRAFFIC CONTROL DEVICES
- 720001 SIGN PANEL MOUNTING DETAILS
- 720006 SIGN PANEL ERECTION DETAILS
- 780001-01 TYPICAL PAVEMENT MARKINGS
- B.L.R. 17-3 TYPICAL APPLICATION OF TRAFFIC CONTROL DEVICES
- B.L.R. 21-6 TRAFFIC CONTROL DEVICES - DAY LABOR CONSTRUCTION FOR CONSTRUCTION ON RURAL LOCAL HIGHWAYS

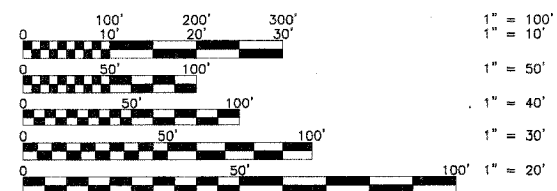


**LOCATION MAP**

□ - DENOTES PROJECT LOCATION  
NET LENGTH OF PROJECT = 5,283 LIN FT (1.0 MILE)  
GROSS LENGTH OF PROJECT = 5,283 LIN FT (1.0 MILE)

PLAN	1 INCH = 30 FEET
PROFILE HORIZ.	1 INCH = 30 FEET
PROFILE VERT.	1 INCH = 5 FEET
CROSS-SECTIONS HORIZ.	1 INCH = 10 FEET
CROSS-SECTIONS VERT.	1 INCH = 5 FEET

**DESIGN DESIGNATION**  
ILL RTE 43 (HARLEM AVENUE)  
200 (20) ARTERIAL 0.82 (BIT. 20)  
POSTED SPEED = 35 MPH  
DESIGN SPEED = N/A  
ADT = 37,900, DHV = 200



FULL SIZE PLANS HAVE BEEN PREPARED USING STANDARD ENGINEERING SCALES. REDUCED SIZED PLANS WILL NOT CONFORM TO STANDARD SCALES. IN MAKING MEASUREMENTS ON REDUCED PLANS, THE ABOVE SCALES MAY BE USED.



STATE OF ILLINOIS  
DEPARTMENT OF TRANSPORTATION  
DIVISION OF HIGHWAYS

APPROVED July 26 2006  
*[Signature]*  
DIRECTOR OF PUBLIC WORKS, PALOS HEIGHTS

PASSED July 28 2006  
*[Signature]*  
CHRISTOPHER HOLT  
BUREAU OF LOCAL ROADS AND STREETS

SIGNED July 31 2006  
*[Signature]*  
DIANE O'KEEFE/CAL  
DEPUTY DIRECTOR OF HIGHWAYS, REGION ENGINEER

PRINTED BY AUTHORITY OF THE STATE OF ILLINOIS



## MORRIS ENGINEERING, INC.

5100 S. LINCOLN • SUITE 100 • LISLE, ILLINOIS 60532  
PHONE: (630)271-0770 • EMAIL: ECIVIL.COM  
DWG LOCATION: H:\04-PH\3004\PLANS-ENG\REV-1  
DRAWN BY: CJS/CMM F.L.D. BK. / PG. NO.:  
COMPLETION DATE: 4/26/06 JOB NO.: 04-PH-3004  
REVISION DATE: 6/1/06

FEDERAL-AID DESIGN ENGINEER: KEVIN STALLWORTH (847)705-4169

CONTRACT NO. 83863