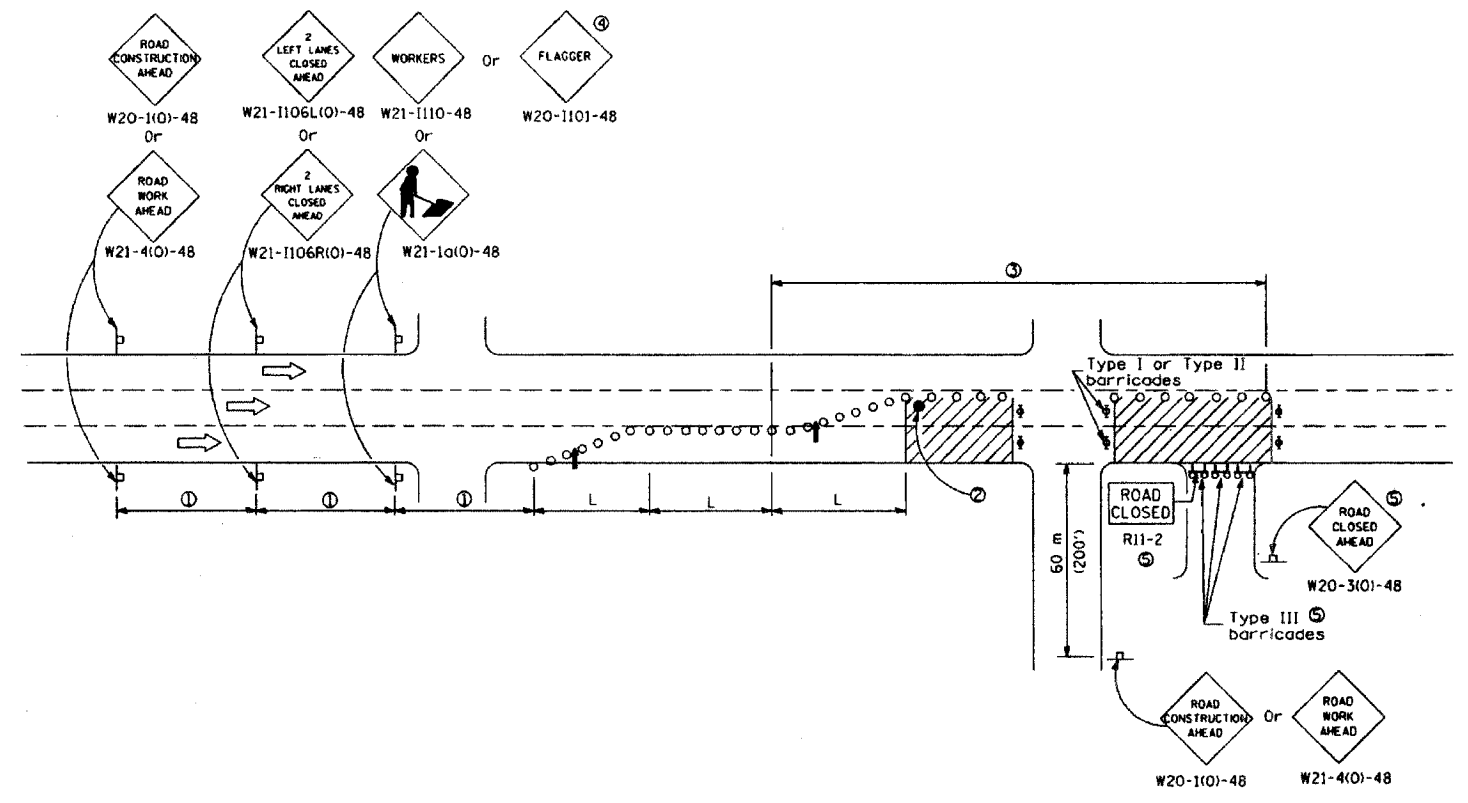


FAP RTE.	SECTION	COUNTY	TOTAL SHEETS	SHEET NO.
348	04-00040-00-LS	COOK	31	18
F.H.W.A. REG.	ILLINOIS	PROJECT:	F-0348(028)	
CONTRACT NUMBER 83863				



All dimensions are in millimeters (inches) unless otherwise shown.

URBAN LANE CLOSURE,
MULTILANE, 1W OR 2W WITH
NONTRAVERSABLE MEDIAN
(Sheet 2 of 2)
STANDARD 701601-04

Illinois Department of Transportation
APPROVED January 1, 2005
ENGINEER OF OPERATIONS
APPROVED January 1, 2005
ENGINEER OF DESIGN AND ENVIRONMENT

MORRIS ENGINEERING, INC.
5100 S. LINCOLN SUITE 100 LISLE, ILLINOIS 60532
PHONE: (630)271-0770 EMAIL: ECIVIL.COM
DWG LOCATION: H\04-PH\3004\PLANS-ENG\REV-1
DRAWN BY: CJS/CMM FLD. BK. / PG. NO. :
COMPLETION DATE: 4/26/06 JOB NO.: 04-PH-3004

HARLEM AVENUE MEDIAN IMPROVEMENTS			
DETAIL SHEET			
DATE	REVISIONS	BY	SHEET
1 6/1/06	PER IDOT 5/18/06	OSC	18 OF 31 SHEETS
2			
3			