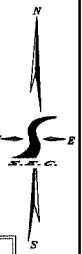
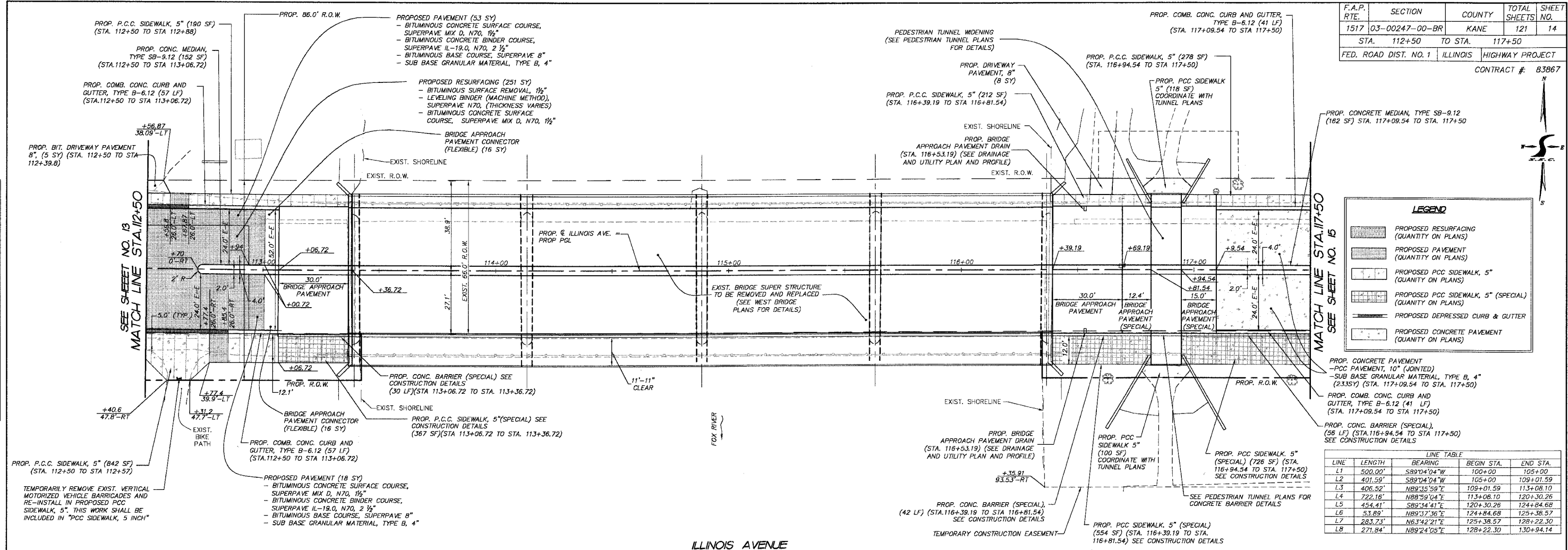


| F.A.P. RTE.                    | SECTION        | COUNTY | TOTAL SHEETS    | SHEET NO. |
|--------------------------------|----------------|--------|-----------------|-----------|
| 1517                           | 03-00247-00-BR | KANE   | 121             | 14        |
| STA. 112+50                    | TO STA. 117+50 |        |                 |           |
| FED. ROAD DIST. NO. 1 ILLINOIS |                |        | HIGHWAY PROJECT |           |
| CONTRACT #: 83867              |                |        |                 |           |



| BY | DATE |
|----|------|
|    |      |
|    |      |
|    |      |
|    |      |
|    |      |
|    |      |

FINAL SURVEY PLOTTED TEMPLATE AREAS CHECKED.



**LEGEND**

- [Pattern] PROPOSED RESURFACING (QUANTITY ON PLANS)
- [Pattern] PROPOSED PAVEMENT (QUANTITY ON PLANS)
- [Pattern] PROPOSED P.C.C. SIDEWALK, 5" (QUANTITY ON PLANS)
- [Pattern] PROPOSED P.C.C. SIDEWALK, 5" (SPECIAL) (QUANTITY ON PLANS)
- [Pattern] PROPOSED DEPRESSED CURB & GUTTER
- [Pattern] PROPOSED CONCRETE PAVEMENT (QUANTITY ON PLANS)

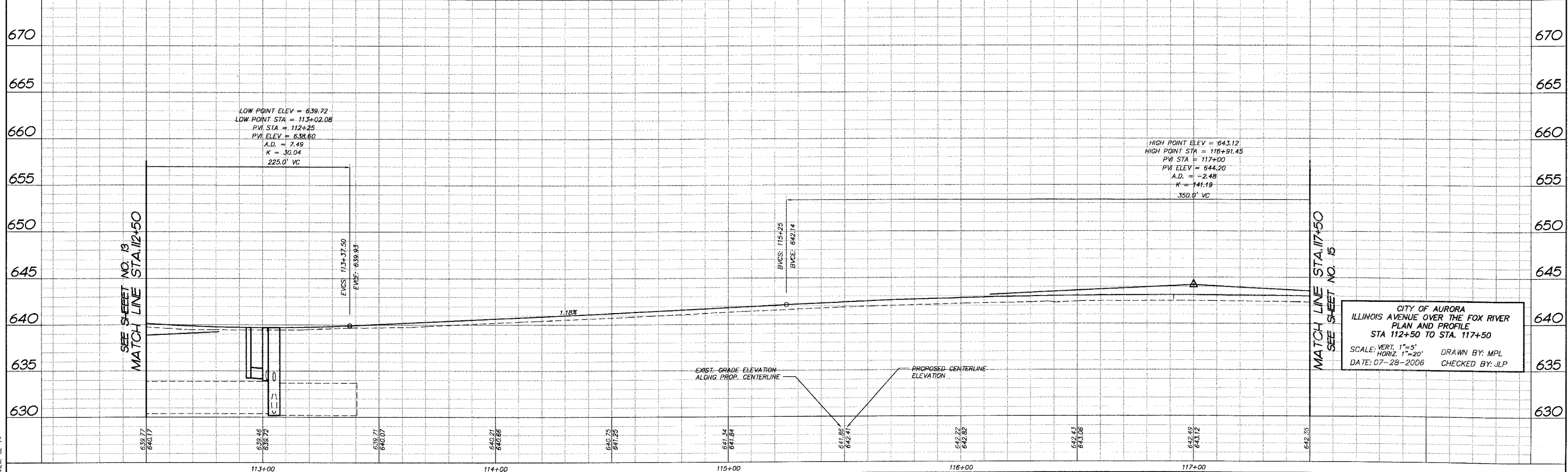
PROP. CONCRETE PAVEMENT  
- PCC PAVEMENT, 10" (JOINTED)  
- SUB BASE GRANULAR MATERIAL, TYPE B, 4" (23.35 SY) (STA. 117+09.54 TO STA. 117+50)

PROP. COMB. CONC. CURB AND GUTTER, TYPE B-6.12 (41 LF) (STA. 117+09.54 TO STA. 117+50)

PROP. CONC. BARRIER (SPECIAL), (58 LF) (STA. 116+94.54 TO STA. 117+50) SEE CONSTRUCTION DETAILS

**LINE TABLE**

| LINE | LENGTH  | BEARING     | BEGIN STA. | END STA.  |
|------|---------|-------------|------------|-----------|
| L1   | 500.00' | S89°04'04"W | 100+00     | 105+00    |
| L2   | 401.59' | S89°04'04"W | 105+00     | 109+01.59 |
| L3   | 406.52' | N89°35'59"E | 109+01.59  | 113+08.10 |
| L4   | 722.16' | N88°59'04"E | 113+08.10  | 120+30.26 |
| L5   | 454.41' | S89°34'41"E | 120+30.26  | 124+84.68 |
| L6   | 53.89'  | N89°37'36"E | 124+84.68  | 125+38.57 |
| L7   | 283.73' | N63°42'21"E | 125+38.57  | 128+22.30 |
| L8   | 271.84' | N89°24'05"E | 128+22.30  | 130+94.14 |



CITY OF AURORA  
ILLINOIS AVENUE OVER THE FOX RIVER  
PLAN AND PROFILE  
STA 112+50 TO STA. 117+50  
SCALE: VERT. 1"=5'  
HORIZ. 1"=20'  
DATE: 07-28-2006  
DRAWN BY: MPL  
CHECKED BY: JLP

COMP. FILE: 050161-502a.dwg  
DWG FILE: 050161-502a.dwg  
VIEW: CE-14