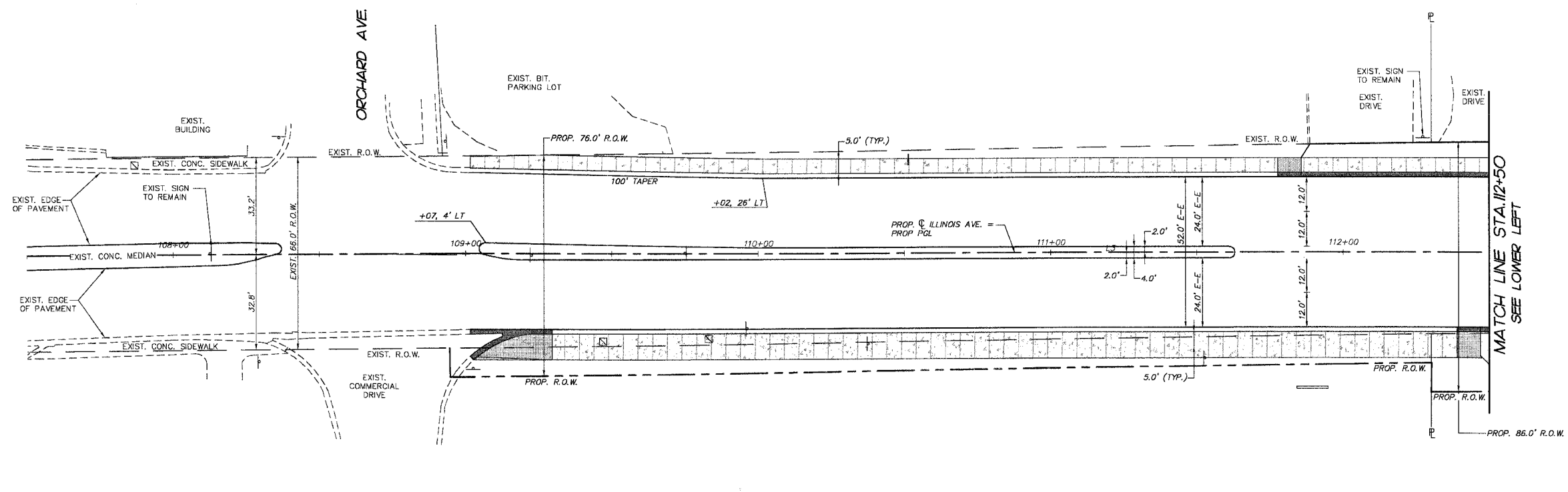


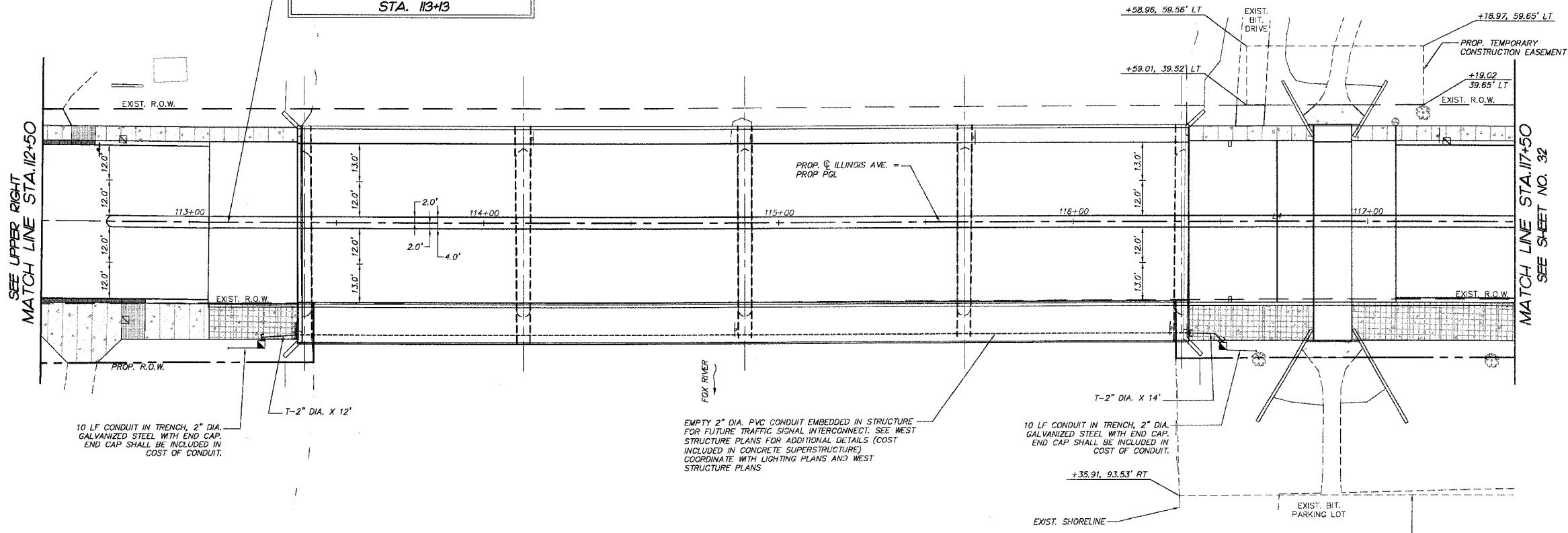
F.A.P. RTE.	SECTION	COUNTY	TOTAL SHEETS	SHEET NO.
1517	03-00247-00-BR	KANE	121	31
STA.	107+50	TO STA.	117+50	
FED. ROAD DIST. NO. 1		ILLINOIS HIGHWAY PROJECT		CONTRACT # 83867



**LEGEND:**

- EXISTING HANDHOLE
- PROPOSED HANDHOLE
- PVC CONDUIT EMBEDDED IN STRUCTURE
- CONDUIT IN TRENCH (T) CONDUIT PUSHED (P)
- RIGID GALVANIZED STEEL (RGS) CONDUIT
- DIA. X LENGTH

BEGIN ILLINOIS AVENUE FUTURE SIGNAL INTERCONNECT IMPROVEMENTS STA. 113+13



10 LF CONDUIT IN TRENCH, 2" DIA. GALVANIZED STEEL WITH END CAP. END CAP SHALL BE INCLUDED IN COST OF CONDUIT.

EMPTY 2" DIA. PVC CONDUIT EMBEDDED IN STRUCTURE FOR FUTURE TRAFFIC SIGNAL INTERCONNECT. SEE WEST STRUCTURE PLANS FOR ADDITIONAL DETAILS (COST INCLUDED IN CONCRETE SUPERSTRUCTURE) COORDINATE WITH LIGHTING PLANS AND WEST STRUCTURE PLANS

10 LF CONDUIT IN TRENCH, 2" DIA. GALVANIZED STEEL WITH END CAP. END CAP SHALL BE INCLUDED IN COST OF CONDUIT.

REVISIONS

NO.	NAME	DATE
7.		
6.		
5.		
4.		
3.		
2.		
1.		

**SMITH ENGINEERING CONSULTANTS, INC.**  
 CIVIL/STRUCTURAL ENGINEERS AND SURVEYORS  
 4500 PRIME PARKWAY, SUITE 201  
 MCHEENY, ILLINOIS 60050  
 PH: 815-386-1770 FAX: 815-386-1781  
 www.smithengineering.com E-MAIL: seo@smithengineering.com  
 \*MCHEENY \*HUNTVILLE \*YORKVILLE  
 ILLINOIS PROFESSIONAL DESIGN FIRM # 184-000108

ILLINOIS DEPARTMENT OF TRANSPORTATION

CITY OF AURORA  
 ILLINOIS AVENUE OVER THE FOX RIVER  
 FUTURE TRAFFIC SIGNAL INTERCONNECT PLAN  
 AND DETECTOR LOOP REPLACEMENT PLAN  
 STA 107+50 TO STA 117+50

SCALE: 1" = 20'  
 DATE 07-28-2006  
 DRAWN BY KMA  
 CHECKED BY J.P.

PLOT FILE: STANDARD  
 VIEW: CL-31  
 COMP. FILE: 050181-002.dwg