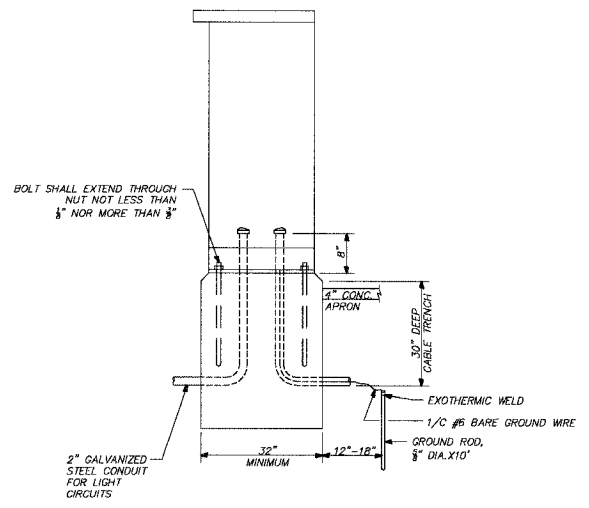
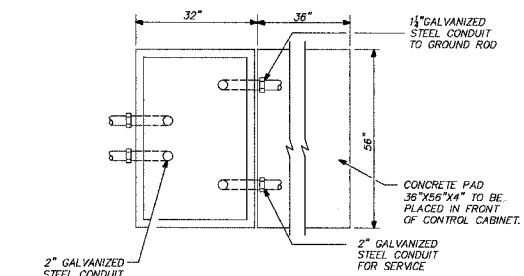


F.A.P. RTE.	SECTION	COUNTY	TOTAL SHEETS	SHEET NO.
1517	03-00247-00-BR	KANE	121	40
STA.	TO STA.			
FED. ROAD DIST. NO. 1	ILLINOIS	HIGHWAY PROJECT		

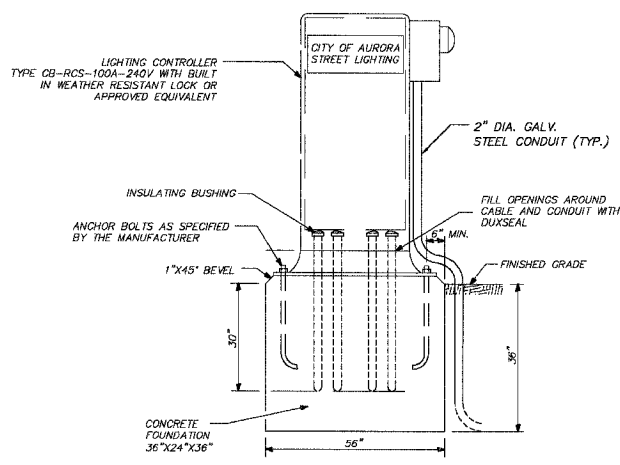
E-08 OF E-09
CONTRACT #: 83867



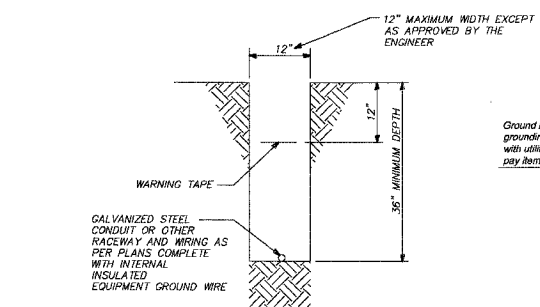
CABINET AND FOUNDATION (SIDE VIEW)



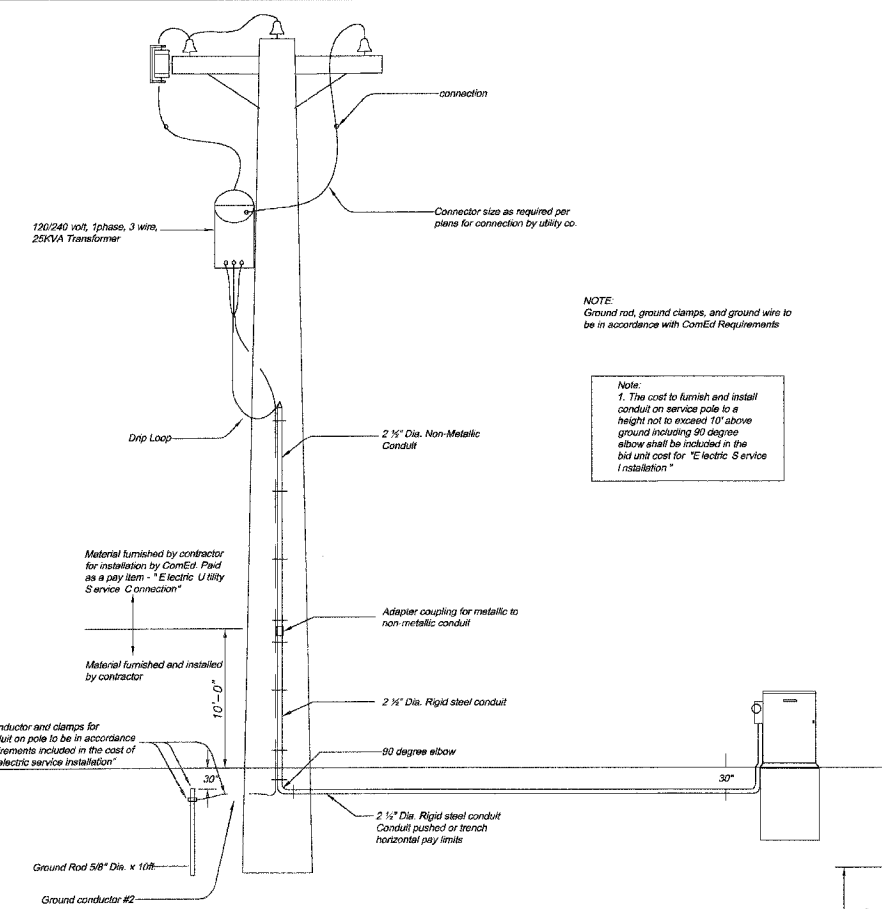
FOUNDATION (TOP VIEW)



CABINET AND FOUNDATION (FRONT VIEW)

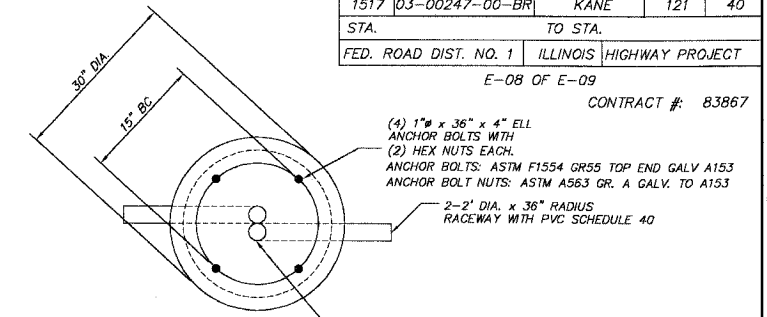


TYPICAL CONDUIT IN TRENCH DETAIL

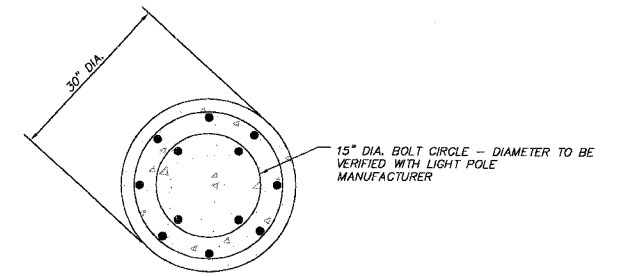


PROPOSED SERVICE INSTALLATION POLE TOP MOUNTED TRANSFORMER

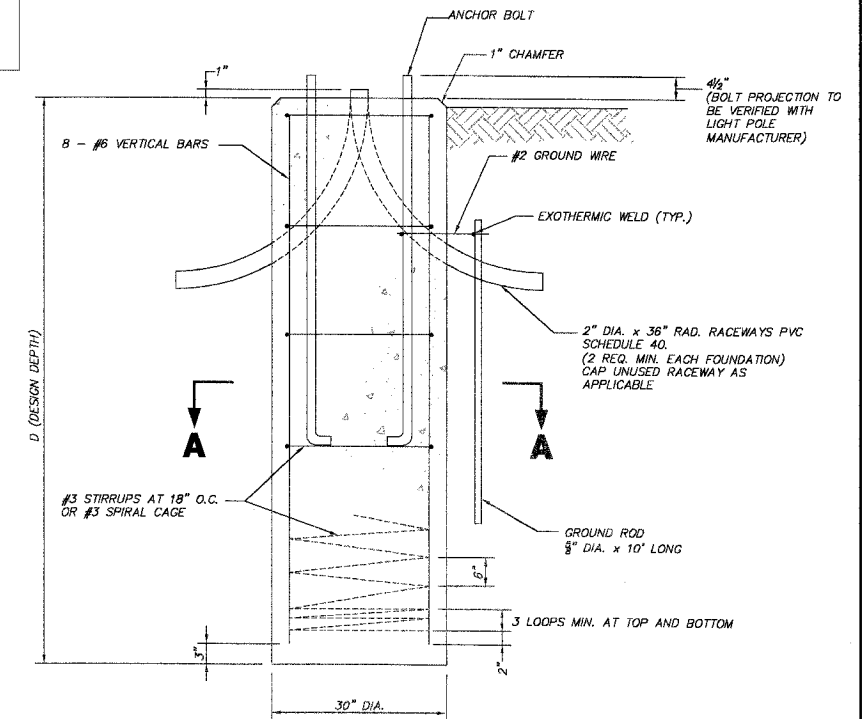
SOIL CONDITIONS	DESIGN DEPTH "D" OF FOUNDATION	
	SINGLE ARM POLE	TWIN ARM POLE
SOFT CLAY Qu = 0.375 TON/SQ. FT.	11'-0"	12'-8"
MEDIUM CLAY Qu = 0.75 TON/SQ. FT.	9'-0"	14'-10"
STIFF CLAY Qu = 1.50 TON/SQ. FT.	7'-6"	8'-7"
LOOSE SAND Phi = 34°	9'-6"	10'-7"
MEDIUM SAND Phi = 37.5°	9'-0"	9'-10"
DENSE SAND Phi = 40°	8'-3"	9'-7"



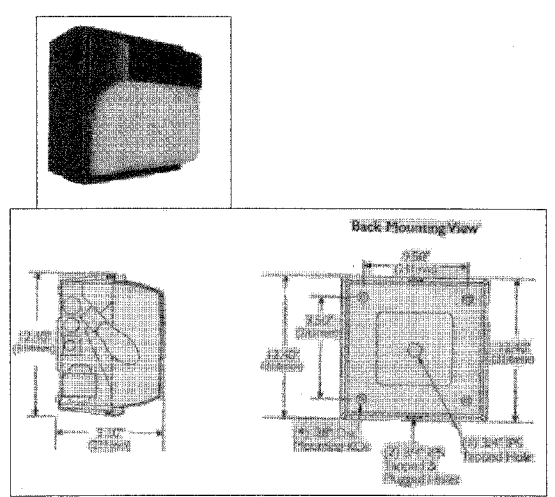
TOP PLAN



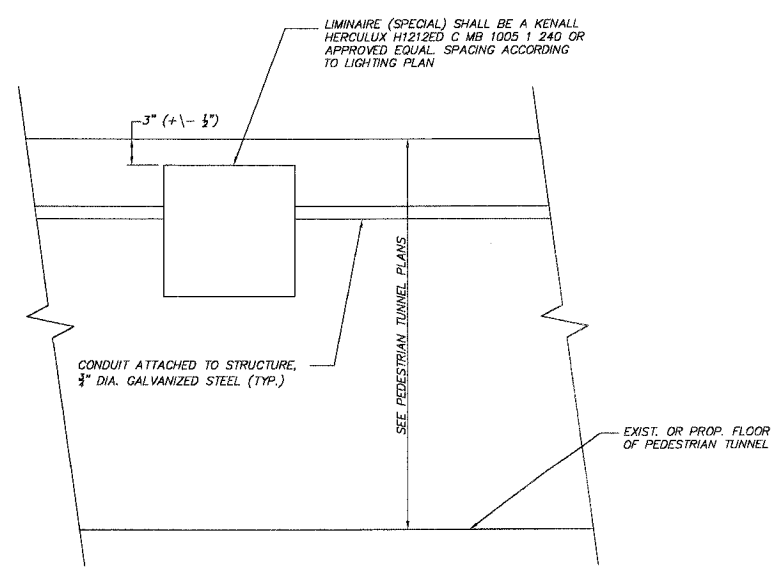
SECTION A-A



FOUNDATION DETAIL



LUMINAIRE (SPECIAL) DETAIL



PEDESTRIAN TUNNEL

NOTES

1. THE ANCHOR BOLTS TIED WITH REINFORCEMENT AND RACEWAYS SHALL BE PROPERLY SECURED IN PLACE BEFORE THE CONCRETE IS PLACED IN THE FORM.
2. RACEWAYS SHALL PROJECT 1" ABOVE THE TOP OF THE FOUNDATION.
3. THE CABLE TRENCH SHALL BE BACKFILLED AND FIRMLY COMPACTED BEFORE LIGHT POLE IS ERECTED.
4. CONCRETE FOR LIGHT POLE FOUNDATION, 30" SHALL BE CLASS SI. CONCRETE FOUNDATION MUST BE CURED FOR TEN (10) DAYS BEFORE THE LIGHT STANDARD IS ERECTED.

REVISIONS	
NAME	DATE
7.	
6.	
5.	
4.	
3.	
2.	
1.	

SMITH ENGINEERING CONSULTANTS, INC.
CIVIL/STRUCTURAL ENGINEERS AND SURVEYORS
4500 VIEWS PARKWAY, SUITE 201
McHENRY, ILLINOIS 60050
PH: 815-385-1776 FAX: 815-385-1761
www.smithengineering.com E-MAIL: see@smithengineering.com
McHENRY HUNTLEY YORKVILLE
ILLINOIS PROFESSIONAL DESIGN FIRM # 184-000108

ILLINOIS DEPARTMENT OF TRANSPORTATION

CITY OF AURORA
ILLINOIS AVENUE OVER THE FOX RIVER
LIGHTING PLANS AND DETAILS

SCALE: N.T.S.
DATE 07-28-08

DRAWN BY
CHECKED BY GB

PLOT FILE: STANDARD
VIEW: CE-40
COMP. FILE: 050101-609-lighting.dwg