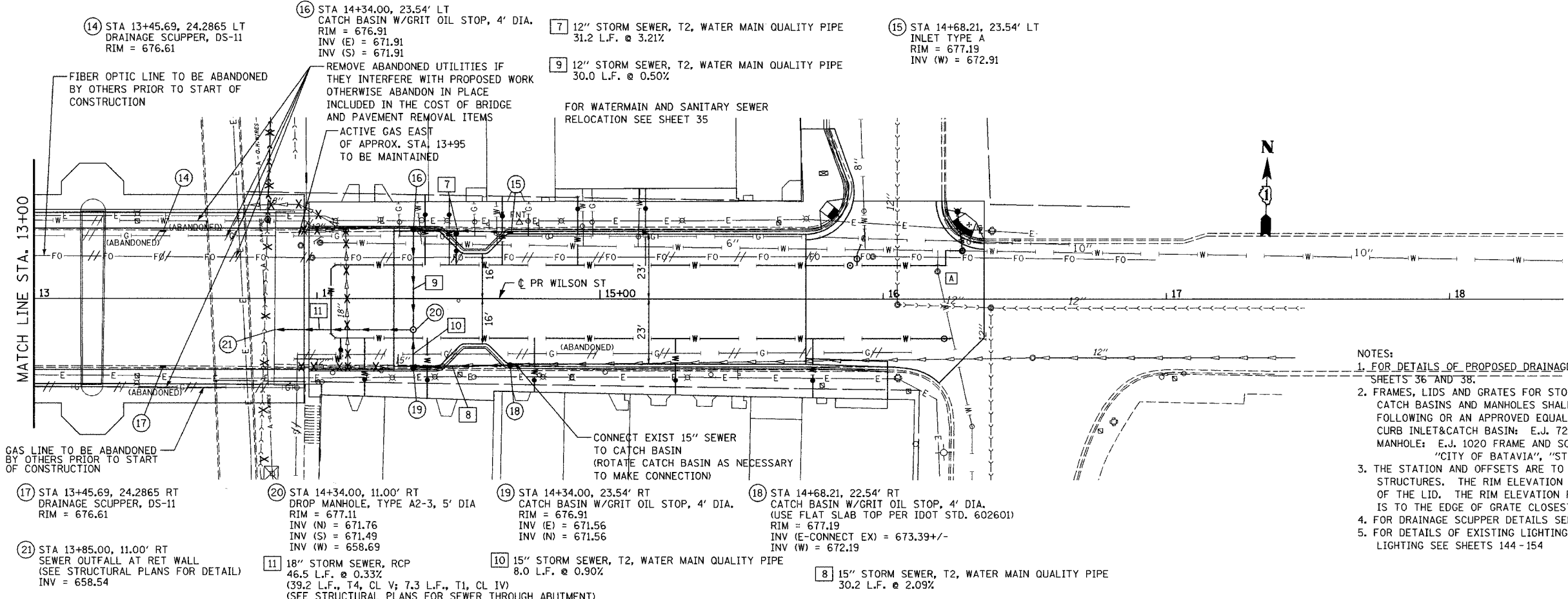


F.A.U. RTE.	SECTION	COUNTY	TOTAL SHEETS	SHEET NO.
1441	00-00059-00-BF	KANE	154	33
STA. 13+00		TO STA.15+72.69		
FED. ROAD DIST. NO.		ILLINOIS FED. AID PROJECT		

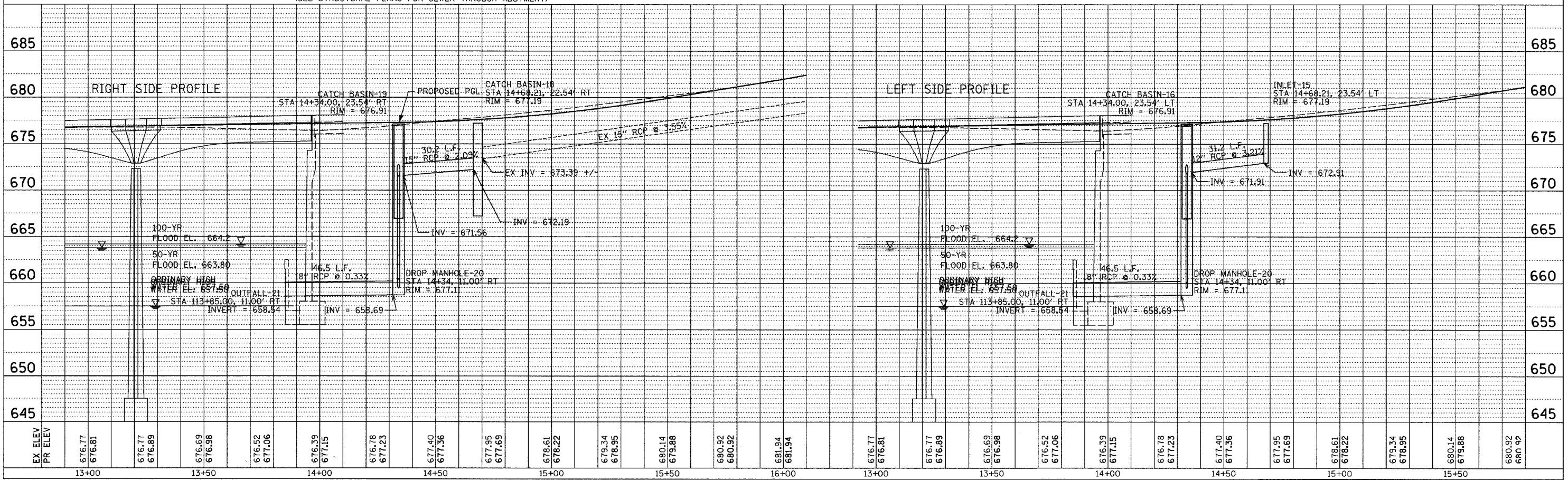
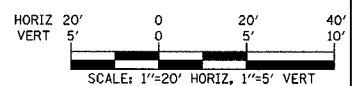
DATE	BY
DATE	BY
DATE	BY

DATE	BY
DATE	BY
DATE	BY

PLOT DATE: 09/13/2006
 FILE NAME: #FILE#
 PLOT SCALE: #SCALE#
 USER NAME: #USER#



- NOTES:
- FOR DETAILS OF PROPOSED DRAINAGE ITEMS, SEE SHEETS 36 AND 38.
 - FRAMES, LIDS AND GRATES FOR STORM SEWER INLETS, CATCH BASINS AND MANHOLES SHALL CONFORM TO THE FOLLOWING OR AN APPROVED EQUAL UNLESS OTHERWISE NOTED:
 CURB INLET&CATCH BASIN: E.J. 7221 TYPE 1 CURB BACK, TYPE M1 GRATE
 MANHOLE: E.J. 1020 FRAME AND SOLID LID WITH THE WORDS "CITY OF BATAVIA", "STORM" SHALL BE CAST INTO THE LID.
 - THE STATION AND OFFSETS ARE TO THE CENTER OF THE DRAINAGE STRUCTURES. THE RIM ELEVATION FOR THE MANHOLES IS TO THE CENTER OF THE LID. THE RIM ELEVATION FOR THE CURB INLETS AND CATCH BASINS IS TO THE EDGE OF GRATE CLOSEST TO THE EDGE OF PAVEMENT.
 - FOR DRAINAGE SCUPPER DETAILS SEE SHEET 97
 - FOR DETAILS OF EXISTING LIGHTING REMOVALS AND PROPOSED LIGHTING SEE SHEETS 144-154



WILSON STREET - DRAINAGE AND UTILITIES - STA. 13+00 TO STA. 17+00