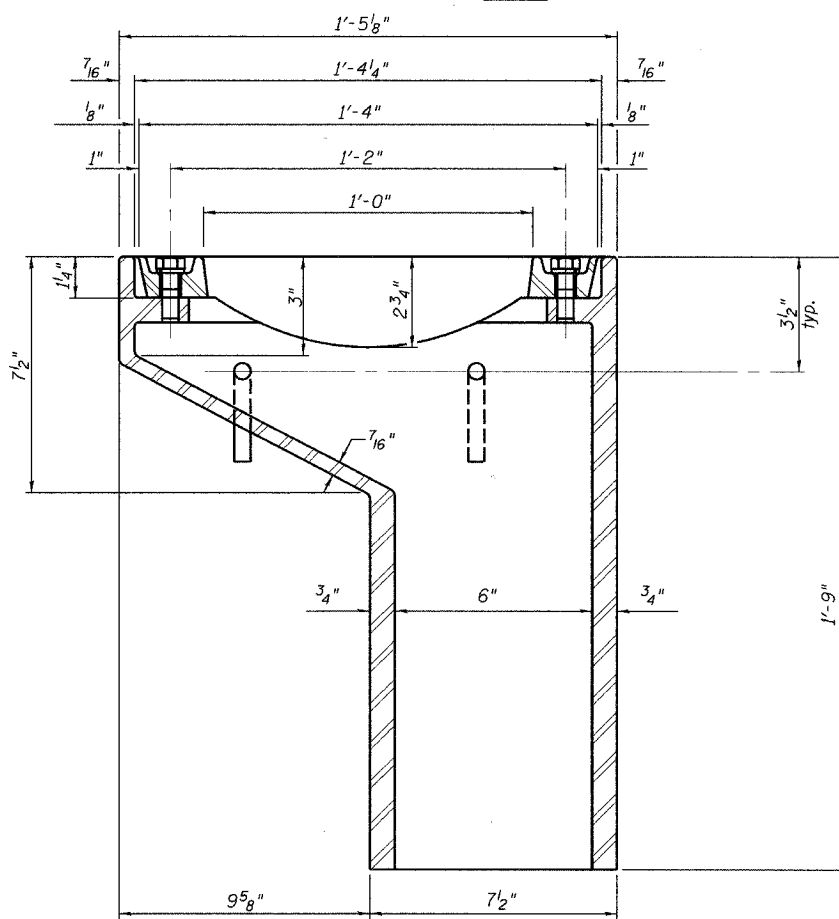
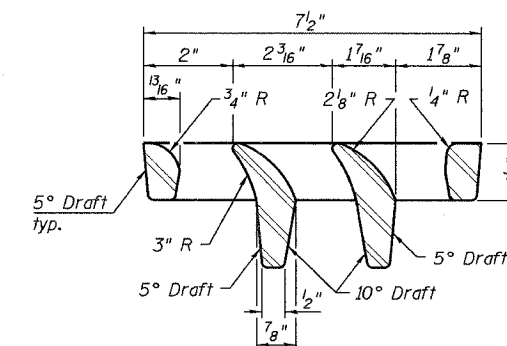
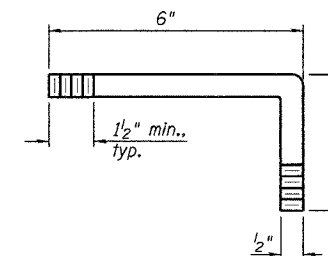
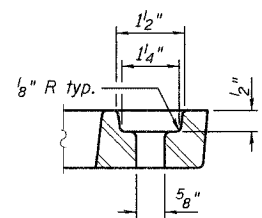
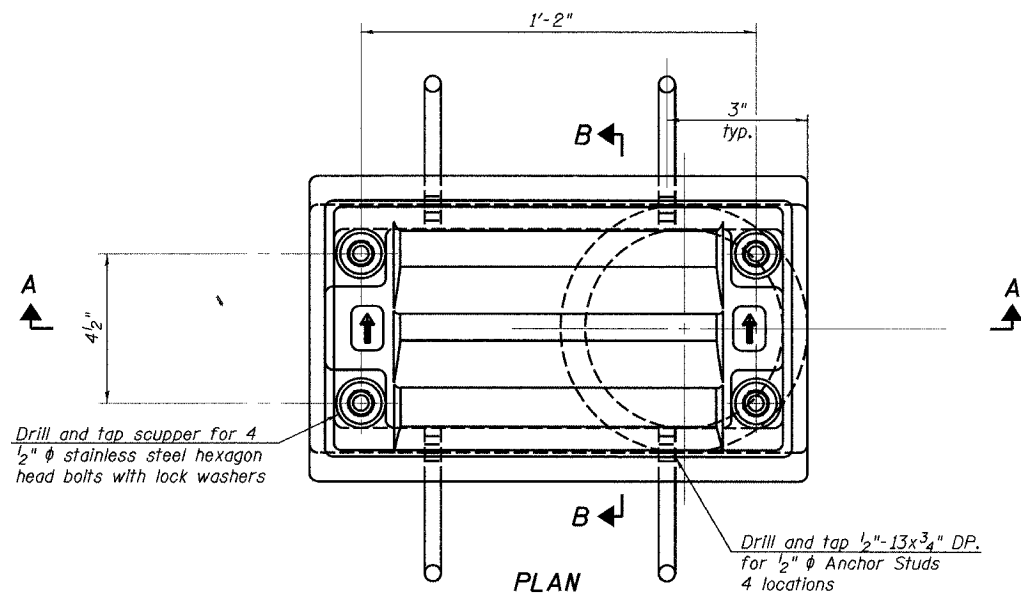


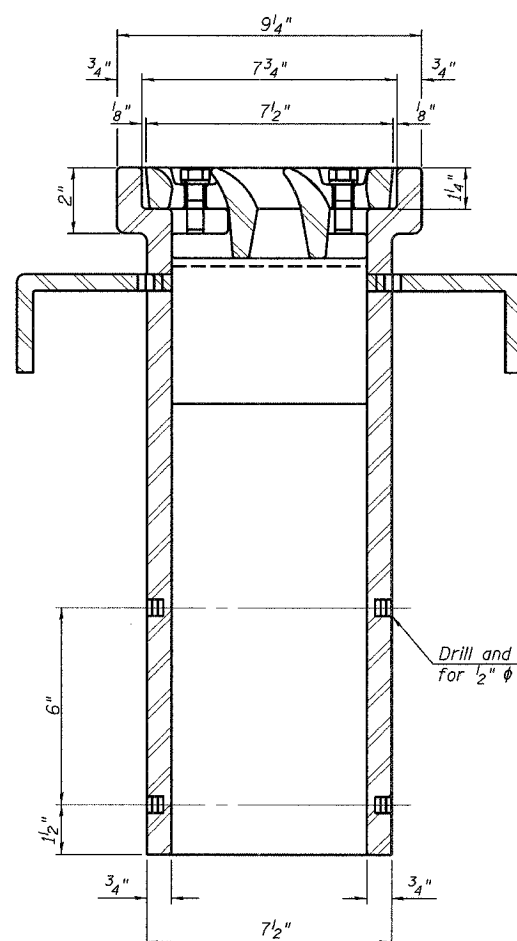
STATE OF ILLINOIS  
DEPARTMENT OF TRANSPORTATION

ROUTE NO.	SECTION	COUNTY	TOTAL SHEETS	SHEET NO.	SHEET NO. S26
FAU 141	00-00059-00-BR	KANE	154	97	of 552 SHEETS
FED. ROAD DIST. NO. 7		ILL. INDS. FEEL. AID PROJECT			

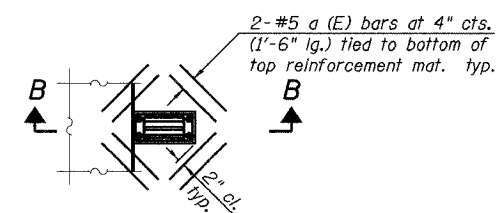
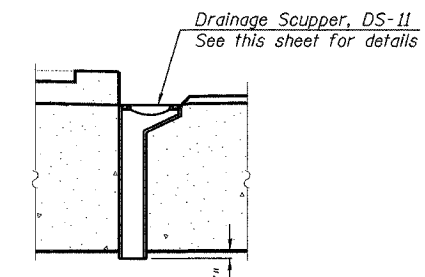
Contract # 83869



SECTION A-A  
See sheet No.83 for scupper location relative to Pler.



Drill and tap 1/2"-13x1/2" DP. for 1/2" φ bolts. (4 locations)



Notes:

All cast iron parts shall be gray iron conforming to the requirements of AASHTO M 105, Class 35B.  
Bolts, anchor studs, washers and nuts shall conform to the requirements of ASTM A 307 and shall be galvanized according to AASHTO M 232.  
The grate, frame and downspout shall be galvanized according to AASHTO M 111 and ASTM A 385.  
As an alternate, bolts, anchor studs, washers and nuts may be stainless steel according to Article 1006.29(d) of the Standard Specifications.  
Structural steel weldments of equal sections and of the same configuration may be substituted for cast iron. Fillet or full penetration welds shall be used for the weldments. Details shall be submitted to the Engineer for approval.  
The Contractor shall take appropriate measures to assure that Protective Coat is not applied to the scupper.  
Cost of the Grate, Frame, Downspout, Anchor Studs, Bolts, Washers and Nuts including complete installation of the scupper shall be paid for at the contract unit price each for Drainage Scupper, DS-11.

BILL OF MATERIAL

ITEM	UNIT	QUANTITY
Drainage Scupper, DS-11	Each	8

DRAINAGE SCUPPER, DS-11  
WILSON ST OVER FOX RIVER  
SECTION 00-00059-00-BR  
KANE COUNTY  
STRUCTURE NO. 045-6051

DESIGNED -
CHECKED - DWH
DRAWN - DWH/LL
CHECKED - DWH

LOCHNER  
H.W. LOCHNER, INC., CHICAGO, ILLINOIS