

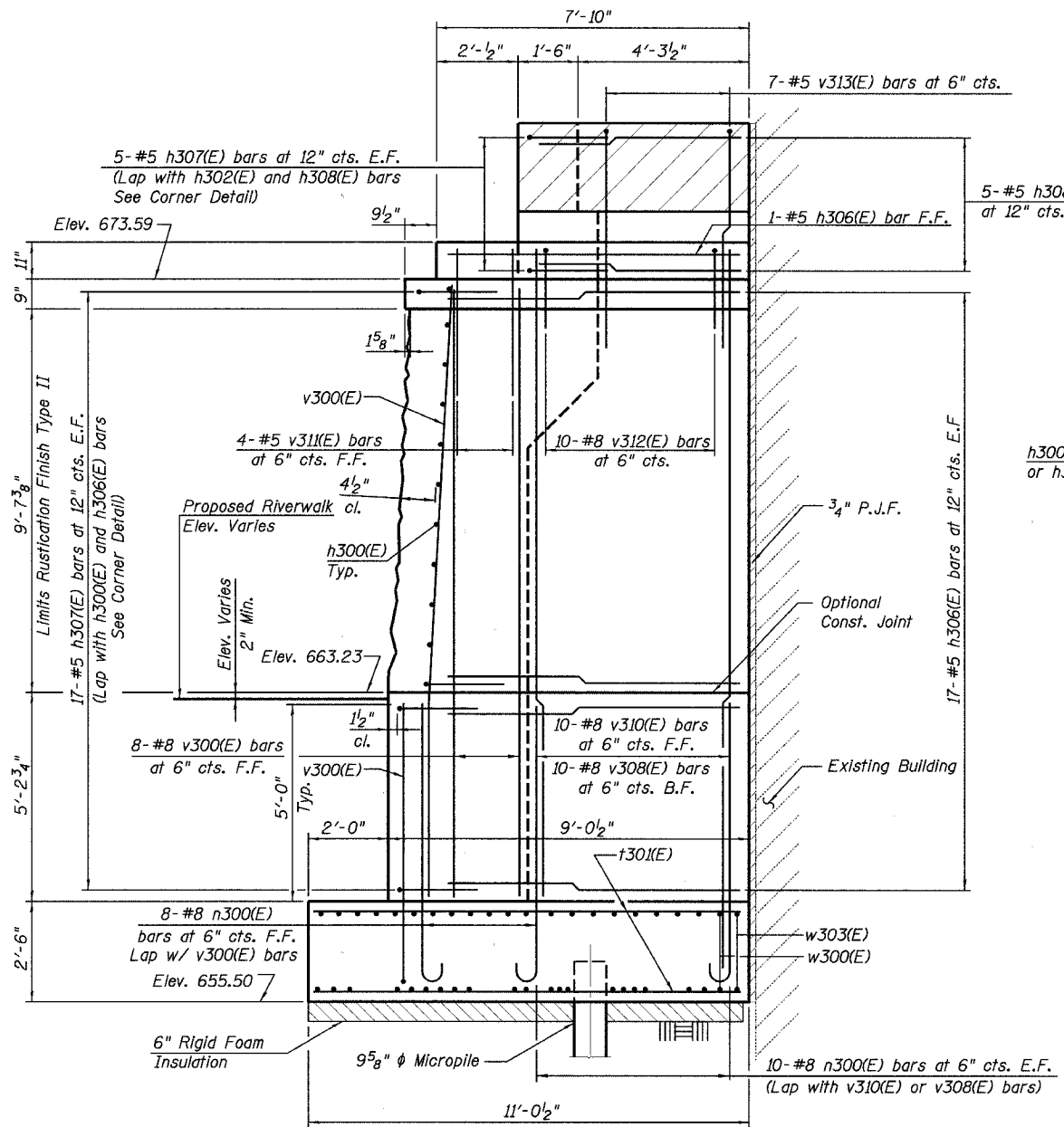
STATE OF ILLINOIS
DEPARTMENT OF TRANSPORTATION

ROUTE NO.	SECTION	COUNTY	TOTAL SHEETS	SHEET NO.	SHEET NO. S30 of S52 SHEETS
FAU 1441	00-00059-00-BR	KANE	154	101	
FED. ROAD DIST. NO. 7		ILLINOIS		FED. AID PROJECT	

Contract # 83869

BILL OF MATERIAL

Bar	No.	Size	Length	Shape
h300(E)	74	#5	38'-2"	—
h301(E)	16	#5	7'-1"	—
h302(E)	16	#5	36'-7"	—
h303(E)	4	#5	11'-7"	—
h304(E)	1	#5	6'-0"	┌
h305(E)	16	#8	6'-11"	—
h306(E)	34	#5	7'-6"	—
h307(E)	50	#5	6'-10"	┌
h308(E)	10	#5	5'-6"	—
n300(E)	251	#8	8'-0"	┌
f300(E)	271	#8	10'-2"	—
f301(E)	20	#8	10'-8"	—
f302(E)	20	#8	5'-5"	—
v300(E)	84	#8	15'-2"	—
v301(E)	145	#8	15'-4"	—
v302(E)	70	#8	10'-6"	┌
v303(E)	138	#8	7'-3"	—
v304(E)	138	#5	5'-11"	┌
v305(E)	3	#8	8'-9"	—
v306(E)	138	#5	5'-3"	—
v307(E)	98	#5	2'-10"	—
v308(E)	10	#8	16'-2"	—
v310(E)	10	#8	16'-1"	—
v311(E)	4	#5	2'-0"	—
v312(E)	10	#8	8'-1"	—
v313(E)	7	#5	8'-4"	—
w300(E)	65	#8	38'-9"	—
w301(E)	19	#8	33'-10"	—
w302(E)	11	#7	8'-11"	—
w303(E)	2	#8	4'-6"	—
Reinforcing Bars		Pound	44040	
Epoxy Coated				
Concrete Structures		Cu. Yd.	255.3	
Pipe Underdrains		Ln. Ft.	77	
for Structures 6"				
Micropiles, 200 Ton		Each	25	
(Special)				
Geocomposite Wall		Sq. Yd.	134	
Drain				
Rock Excavation		Cu. Yd.	2	
for Structures				
Rustication Finish		Sq. Ft.	794	
Type II (Special)				
Porous Granular		Cu. Yd.	1030	
Embankment				
Bridge Seat Sealer		Sq. Ft.	225	
Rubbed Finish		Sq. Ft.	205	
Structure Excavation		Cu. Yd.	47	

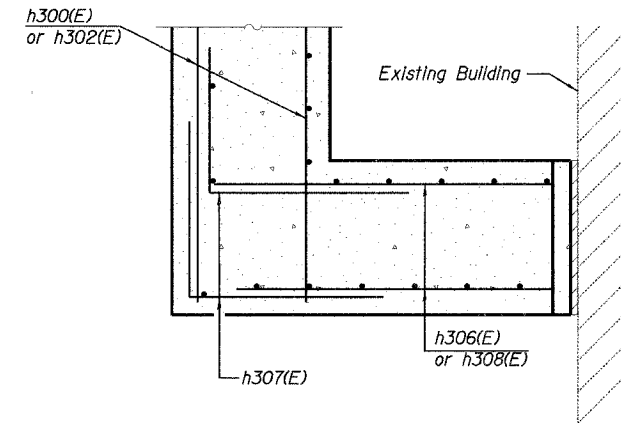


VIEW D-D

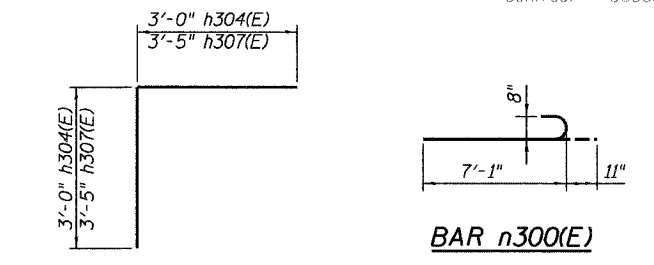
Typ. Lap Splice	
Bar Size	Min. Lap
#5	2'-2"
#5*	3'-0"*
#6	2'-7"
#7	3'-5"
#8	4'-6"

* Top Horizontal Bar

DESIGNED - KMS
CHECKED - KSS
DRAWN - KMS/EF
CHECKED - KSS

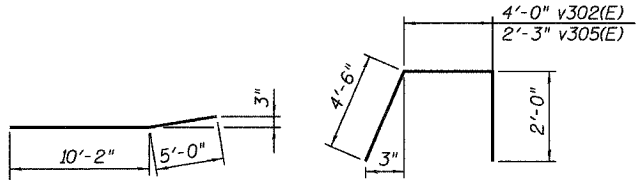


CORNER DETAIL



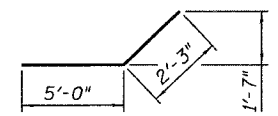
BAR n300(E)

BARS h304(E) & h307(E)

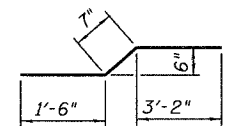


BAR v300(E)

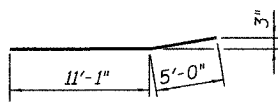
BARS v302(E) & v305(E)



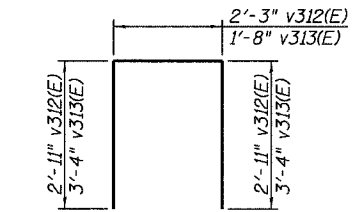
BAR v303(E)



BAR v306(E)



BAR v310(E)



BARS v312(E) & v313(E)

NOTE

1. Work this sheet with Sheet Nos. 98 through 100

EAST ABUTMENT DETAILS II
WILSON ST OVER FOX RIVER
SECTION 00-00059-00-BR
KANE COUNTY
STRUCTURE NO. 045-6051

LOCHNER
H.W. LOCHNER, INC., CHICAGO, ILLINOIS