

ITEM	SPECIFICATION	MANUFACTURER/MODEL NO. OR APPROVED EQUAL
1 MAIN CIRCUIT BREAKER	60 AMPERE, 2 P, 240 V RATING, 22K AIC	SIEMENS NO. ED42B060
2 LAMPHOLDER CIRCUIT BREAKER	20 AMPERE, 1 P, 120 V RATING, 22K AIC	SIEMENS NO. ED41B020
3 PHOTOELECTRIC CONTROL CIRCUIT BREAKER	15 AMPERE, 1 P, 120 V RATING, 22K AIC	SIEMENS NO. ED41B015
4 AUXILIARY RELAY	120 V OPERATED SPST 60 HZ COIL 600V NORMALLY OPEN CONTACTS	MAGNECRAFT NO. W389ACX-9
5 CABINET RECEPTACLE AND BOX	COMMERCIAL GRADE GFCI 20A/120V, MOUNTED IN A WEATHERPROOF CAST ALUMINUM SINGLE GANG BOX WITH WEATHERPROOF COVER	RECEPTACLE: LEVITON NO. 8899, BOX: APPLETON NO. WSM150 COVER: APPLETON NO. WHG1
6 CABINET LIGHT AND BOX	120V WEATHERPROOF LAMPHOLDER MOUNTED IN A CAST ALUMINUM BOX & EXT. GRADE 100W LAMP	LIGHT & BOX: RAB NO. VX100DG
7 CONTACTOR	60 AMPERE, 2 POLE, 120 V COIL, MECH HELD	SQUARE D NO. 8903 SPD 10 V02
8 LIGHTING CIRCUIT BREAKERS RECEPTACLE CIRCUIT BREAKERS	2- 20 AMPERE, 2 P, 240 V RATING, 22K AIC 2- 20 AMPERE, 1 P, 120 V RATING, 22K AIC	SIEMENS NO. ED42B020 SIEMENS NO. ED41B020
9 POWER DISTRIBUTION BLOCK	600 VOLT, INSULATED, SIZE AS REQUIRED	MARATHON
10 SERVICE CABLES	3-600V (XLP-TYPE USE) NO. 6	N/A
11 LAMPHOLDER WIRE	2-600V XLP NO. 12	N/A
12 CONTROL WIRE	2-600V XLP NO. 12	N/A
13 SURGE ARRESTOR	10 K AMPERE RATING	SQUARE D NO. SDSA 1175
14 PHOTOELECTRIC CONTROL WIRE	3-600V XLP NO. 12	3-600V XLP NO. 12
15 DOOR SWITCH	20A/120V, DOOR MOUNTED SNAP ACTION TYPE PLUNGER SWITCH	OMRON NO. A-20GQ-K
16 HAND-AUTO-OFF CONTROL SWITCH	20 A, 3 PDS, MTD IN CAST ALUM. ENCLOSURE	SQUARE D NO. 9001 KYK 111
17 PHOTOCCELL	120V, MTD, ON CABINET, DELAY TYPE, SPST-NC	FISHER PIERCE NO. FFFA-105

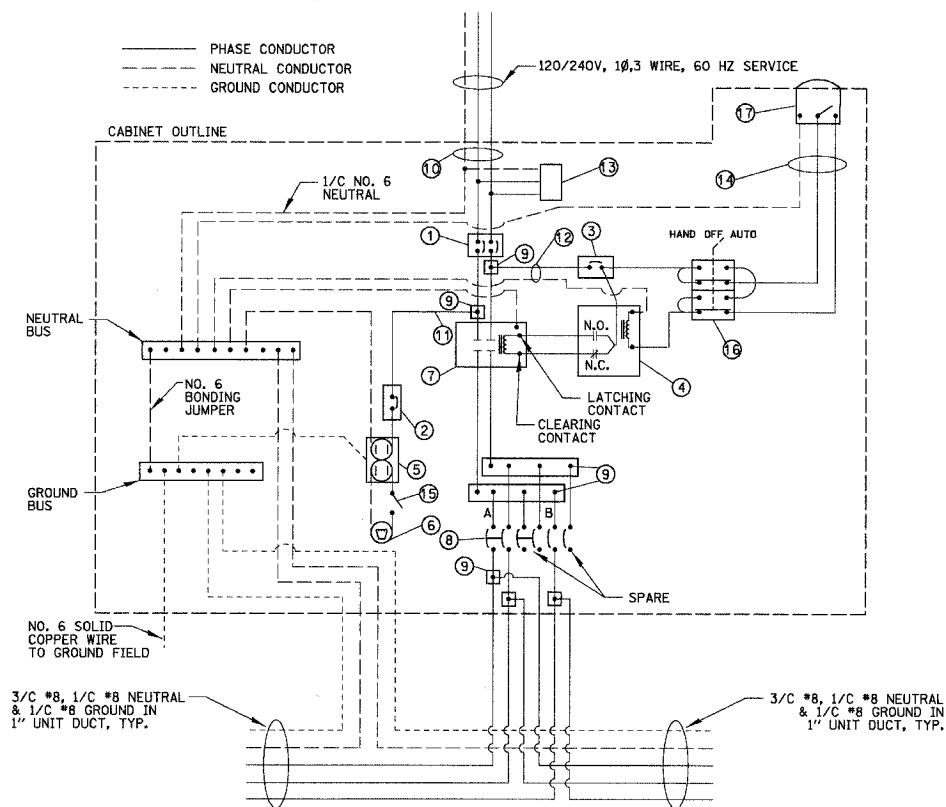
CIRCUIT ID	250W LUMINAIRE		POLE MOUNTED RECEPTACLE		TOTAL CIRCUIT LOAD (WATTS)
	QUANTITY	LOAD/POLE (WATTS)	QUANTITY	LOAD/POLE (WATTS)	
A	5	304W	-	180W	1520 W
B	-	304W	5	180W	900 W
TOTAL	5	N/A	5	N/A	2420 W

**LIGHTING CONTROLLER #2
CIRCUIT WATTAGE LOADS**

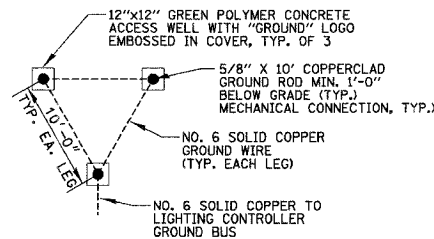
NOTES:

- ALL ITEMS LISTED IN LIGHTING CONTROLLER #2 COMPONENT SCHEDULE SHALL BE CONSIDERED INCIDENTAL TO THE PRICE BID FOR "STREET LIGHTING CONTROLLER" INCLUDING CABINET AND FOUNDATION.
- THE LIGHTING CONTROLLER TOGETHER WITH ALL OF ITS COMPONENTS SHALL BE UL LISTED AS AN "ENCLOSED INDUSTRIAL CONTROL PANEL" UNDER UL508A.

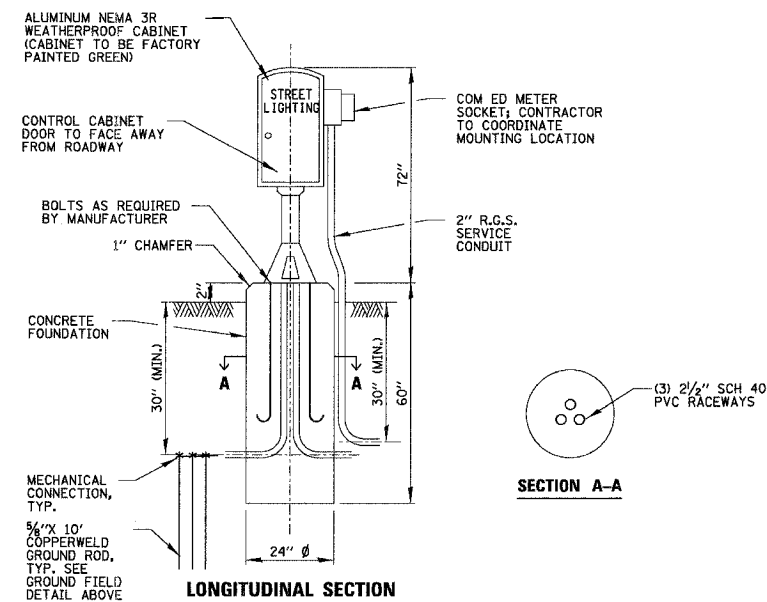
LIGHTING CONTROLLER #2 COMPONENT SCHEDULE



LIGHTING CONTROLLER #2 WIRING DETAIL
N.T.S.

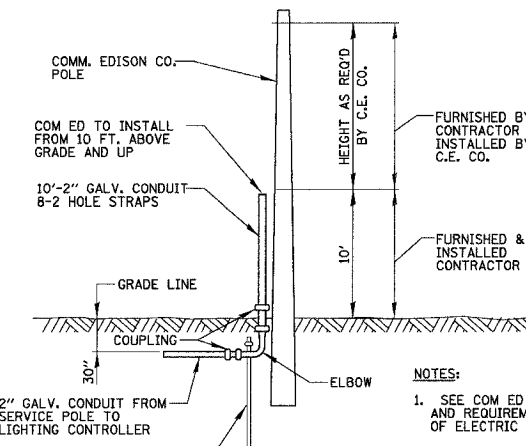


GROUND FIELD DETAIL (TYP.)
N.T.S.



NOTE: ALL ITEMS SHOWN ABOVE INCLUDING FOUNDATION SHALL BE INCLUDED IN THE PRICE BID FOR "STREET LIGHTING CONTROLLER", EXCEPT FOR THE SERVICE CONDUIT AND GROUND RODS WHICH WILL BE PAID FOR SEPARATELY.

**LIGHTING CONTROLLER #2
CABINET AND FOUNDATION**
N.T.S.



- NOTES:**
- SEE COM ED BOOK OF INFORMATION AND REQUIREMENTS FOR THE SUPPLY OF ELECTRIC SERVICE
 - ALL MATERIAL ABOVE EXCEPT FOR POLE SHALL BE INCLUDED IN THE PRICE BID FOR "ELECTRIC SERVICE INSTALLATION" INCLUDING ANY UTILITY CONNECTION FEES.

COM ED OVERHEAD CONNECTION POLE
N.T.S.

REVISIONS	NAME	DATE

ILLINOIS DEPARTMENT OF TRANSPORTATION
**88TH AVENUE
ROADWAY LIGHTING DETAILS-2**

SCALE: NO SCALE
DATE: 8/22/2006
DRAWN BY: AJD
DESIGN BY: AJD
CHECKED BY: JPC