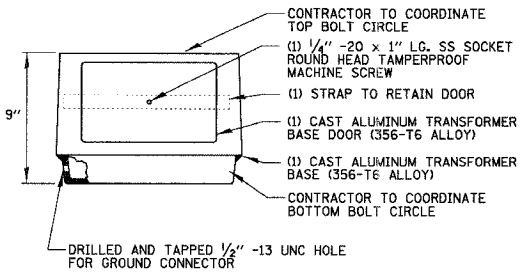


MATERIAL SPECIFICATIONS	
POLE & ARM TUBES	6063-T6
ANCHOR BASE & TRANSFORMER BASE	AA356-T6
SMALL HARDWARE	AISI 300 SERIES STN. STL.
EXTRUSIONS	6063-T6
T-BASE CONN HRDW	ASTM-A307
H.H. FRAME	AA356-T6
BOLT COVERS	ASTM-825(AA356)

POLE TYPE	MTG. HT. INC. T-BASE	POLE SIZE	ARM SPREAD	ARM TUBE SIZE
1	40'-9"	.250"-10.0"x6.0"x37'-8"	15 FT.	0.125"W-4.0" O.D.
2	48'-3"	.250"-10.0"x6.0"x45'-2"	15 FT.	0.125"W-4.0" O.D.

- NOTES:
- LIGHTPOLES SHALL MEET WIND LOADING & VIBRATION REQUIREMENTS ACCORDING TO AASHTO STANDARDS. SEE ARTICLE 1069.01 IN STANDARD SPECIFICATIONS FOR ROAD AND BRIDGE CONSTRUCTION. ALL STEEL SHALL BE FROM A DOMESTIC SOURCE.
 - THE LIGHT STANDARD SHALL MEET THE ILLUMINATION REQUIREMENTS AS SPECIFIED IN THE LUMINAIRE PERFORMANCE TABLES IN THE SPECIFICATIONS. ALL LUMINAIRES SHALL HAVE A MULTITAP BALLAST WIRED FOR 240 VOLT OPERATION.
 - ALL LIGHT POLES SHALL BE FROM THE SAME MANUFACTURER, AND ALL LUMINAIRES SHALL BE FROM THE SAME MANUFACTURER.
 - GFI RECEPTACLE SHALL HAVE A DIE CAST IN USE RATED COVER. COVER TO BE INTERMATIC MODEL NO. WP1010MC OR APPROVED EQUAL.

LIGHT STANDARD DETAIL
N.T.S.



- NOTES:
- BEFORE INSTALLATION OF BREAKAWAY BASE, USER SHOULD CONSULT WITH AUTHORIZED DISTRIBUTOR REGARDING USERS PROPOSED APPLICATION, LOAD REQUIREMENTS AND INSTALLATION METHODS. FAILURES CAN RESULT FROM USERS MISAPPLICATION OR IMPROPER INSTALLATION. TO APPROACH OPTIMUM STATIC LOADS, USE THE LARGEST POSSIBLE BOLT CIRCLES. SHIMS SHALL NOT BE USED.

BREAKAWAY TRANSFORMER BASE
N.T.S.

LUMINAIRE TABLE				
POLE TYPE	WATTAGE	PHOTOMETRIC	MANUFACTURER	MODEL NUMBER
1	250 W	MC3	A	G.E. MDCL 2550A22FMC32
			B	HUBBELL RMC-3, RMD-25S38-3
2	250 W	MC3	A	G.E. MDCL 2550A22FMC32
			B	HUBBELL RMC-3, RMD-25S38-3

LUMINAIRE AND POLE SCHEDULE

LIGHT POLE IDENTIFIER	LIGHT POLE SYMBOL/TYPE	LUMINAIRE MTG. HEIGHT	POLE ARM LENGTH	LUMINAIRE WATTAGE	LUMINAIRE CIRCUIT NO.	RECEPTACLE CIRCUIT NO.	CONTROLLER NUMBER
P1	●-1	40'-0"	15'-0"	250W	A	E	1
P2	●-1	40'-0"	15'-0"	250W	B	F	1
P3	●-1	40'-0"	15'-0"	250W	A	E	1
P4	●-1	40'-0"	15'-0"	250W	B	F	1
P5	●-1	40'-0"	15'-0"	250W	A	E	1
P6	●-1	40'-0"	15'-0"	250W	B	F	1
P7	●-1	40'-0"	15'-0"	250W	A	E	1
P8	●-1	40'-0"	15'-0"	250W	B	F	1
P9	●-1	40'-0"	15'-0"	250W	A	E	1
P10	●-1	40'-0"	15'-0"	250W	B	F	1
P11	●-1	40'-0"	15'-0"	250W	A	E	1
P12	●-1	40'-0"	15'-0"	250W	B	F	1
P13	●-1	40'-0"	15'-0"	250W	A	E	1
P14	●-1	40'-0"	15'-0"	250W	C	G	1
P15	●-1	40'-0"	15'-0"	250W	D	H	1
P16	●-1	40'-0"	15'-0"	250W	C	G	1
P17	●-1	40'-0"	15'-0"	250W	D	H	1
P18	●-1	40'-0"	15'-0"	250W	C	G	1
P19	●-1	40'-0"	15'-0"	250W	D	H	1
P20	●-1	40'-0"	15'-0"	250W	C	G	1
P21	●-1	40'-0"	15'-0"	250W	D	H	1
P22	●-1	40'-0"	15'-0"	250W	C	G	1
P23	●-1	40'-0"	15'-0"	250W	D	H	1
P24	●-2	47'-6"	15'-0"	250W	A	B	2
P25	●-2	47'-6"	15'-0"	250W	A	B	2
P26	●-2	47'-6"	15'-0"	250W	A	B	2
P27	●-2	47'-6"	15'-0"	250W	A	B	2
P28	●-2	47'-6"	15'-0"	250W	A	B	2

REVISIONS	
NAME	DATE

ILLINOIS DEPARTMENT OF TRANSPORTATION
88TH AVENUE ROADWAY LIGHTING DETAILS-3
 SCALE: NO SCALE
 DATE 8/22/2006
 DRAWN BY AJD
 DESIGN BY AJD
 CHECKED BY JPC

SPEN1BLS