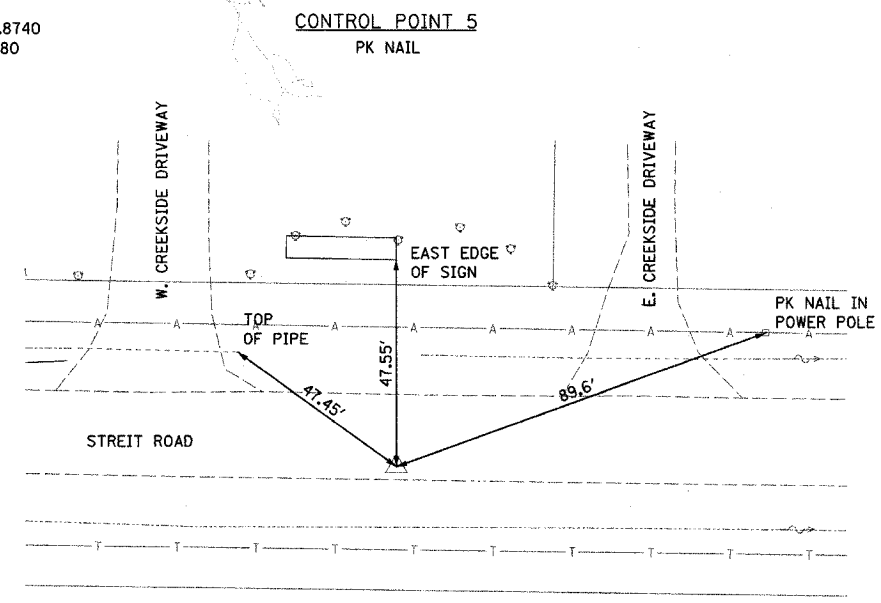


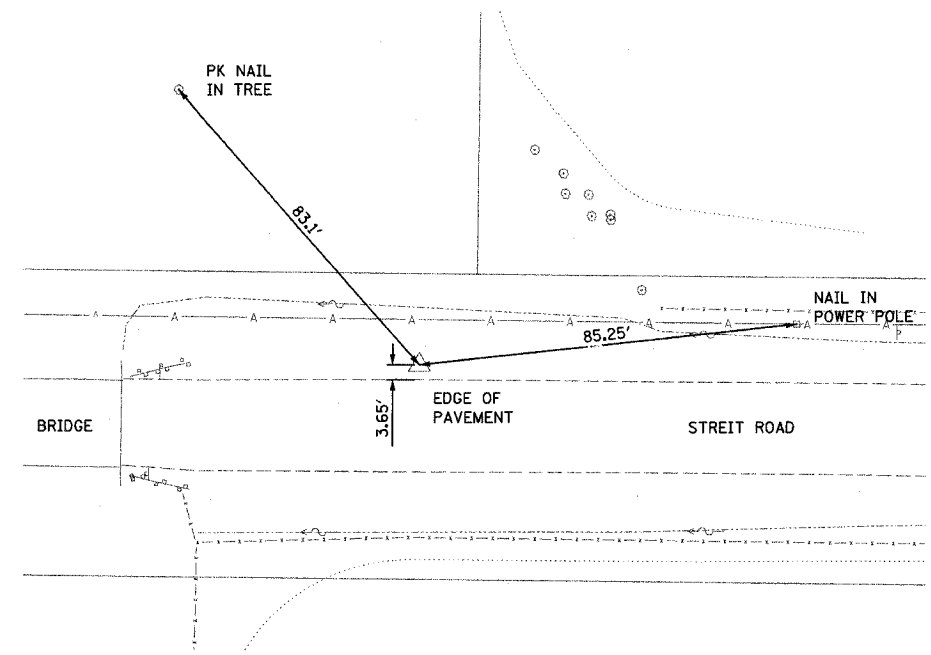
F.A. RTE.	SECTION	COUNTY	TOTAL SHEETS	SHEET NO.
0083 02-00270-00-BR		MCHENRY	37	9
STA.	TO STA.			
FED. ROAD DIST. NO.	ILLINOIS FED. AID PROJECT			
CONTRACT NO.: 83872				

NORTHING: 2083110.8740
 EASTING: 931415.5880
 ELEV.= 914.50
 STA. 88+95
 OFFSET: 6.77' RT



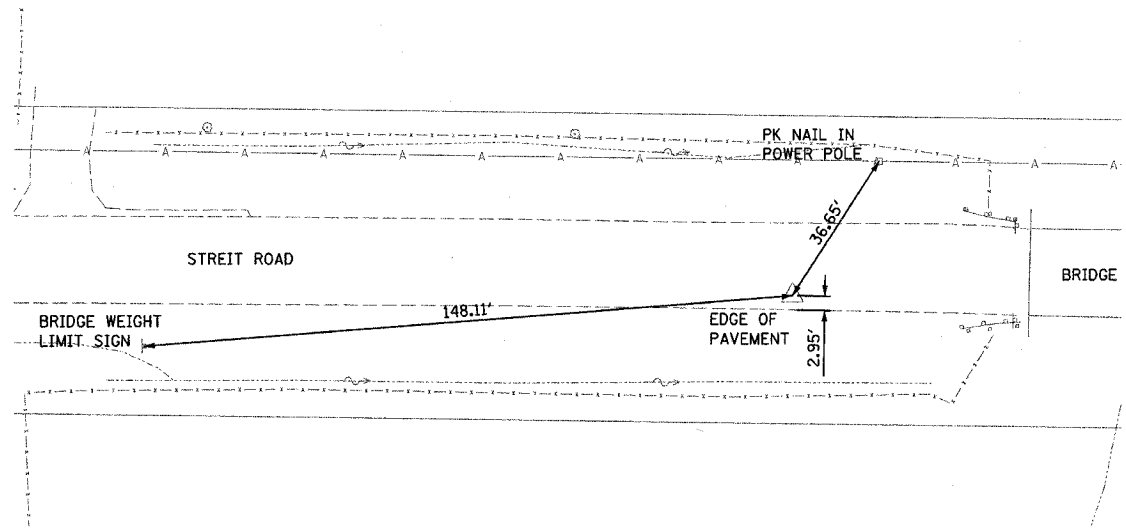
NORTHING: 2083115.7220
 EASTING: 932622.0090
 ELEV.= 910.21
 STA. 99+14
 OFFSET: 6.06' RT

CONTROL POINT 15
 REBAR WITH CAP



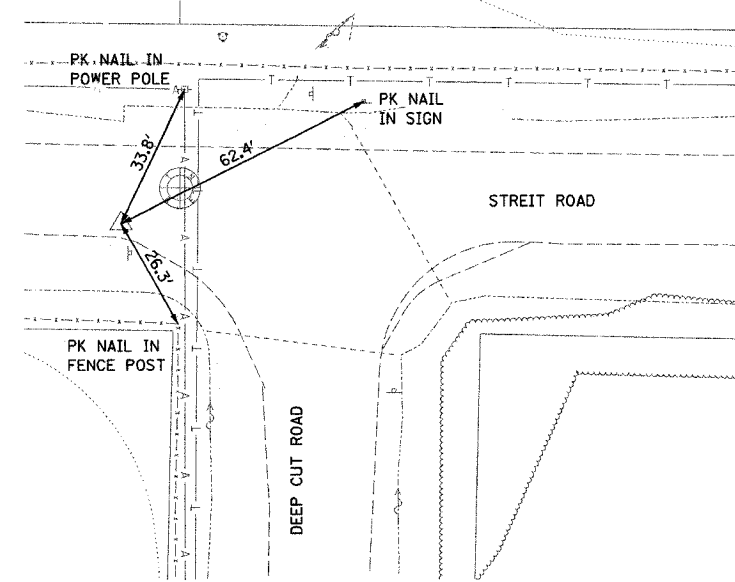
NORTHING: 2083098.1250
 EASTING: 932435.1180
 ELEV.= 911.28
 STA. 101+03
 OFFSET: 14.00' LT

CONTROL POINT 10
 PK NAIL



NORTHING: 2083078.5440
 EASTING: 933570.5830
 ELEV.= 926.41
 STA. 110+49
 OFFSET: 7.85' RT

CONTROL POINT 20
 PK NAIL



REVISIONS	
NAME	DATE

ILLINOIS DEPARTMENT OF TRANSPORTATION
 CONTROL POINT TIE-OFFS
 T.R. 0083 (STREIT ROAD) OVER
 NORTH BRANCH OF THE KISHWAUKEE RIVER
 T.R. 0083 SECTION 02-00270-00-BR
 McHENRY COUNTY
 S.N. 056-3067

SCALE: VERT. N.T.S.
 HORIZ.
 DATE 8/8/2006

DRAWN BY JBH
 CHECKED BY AJS