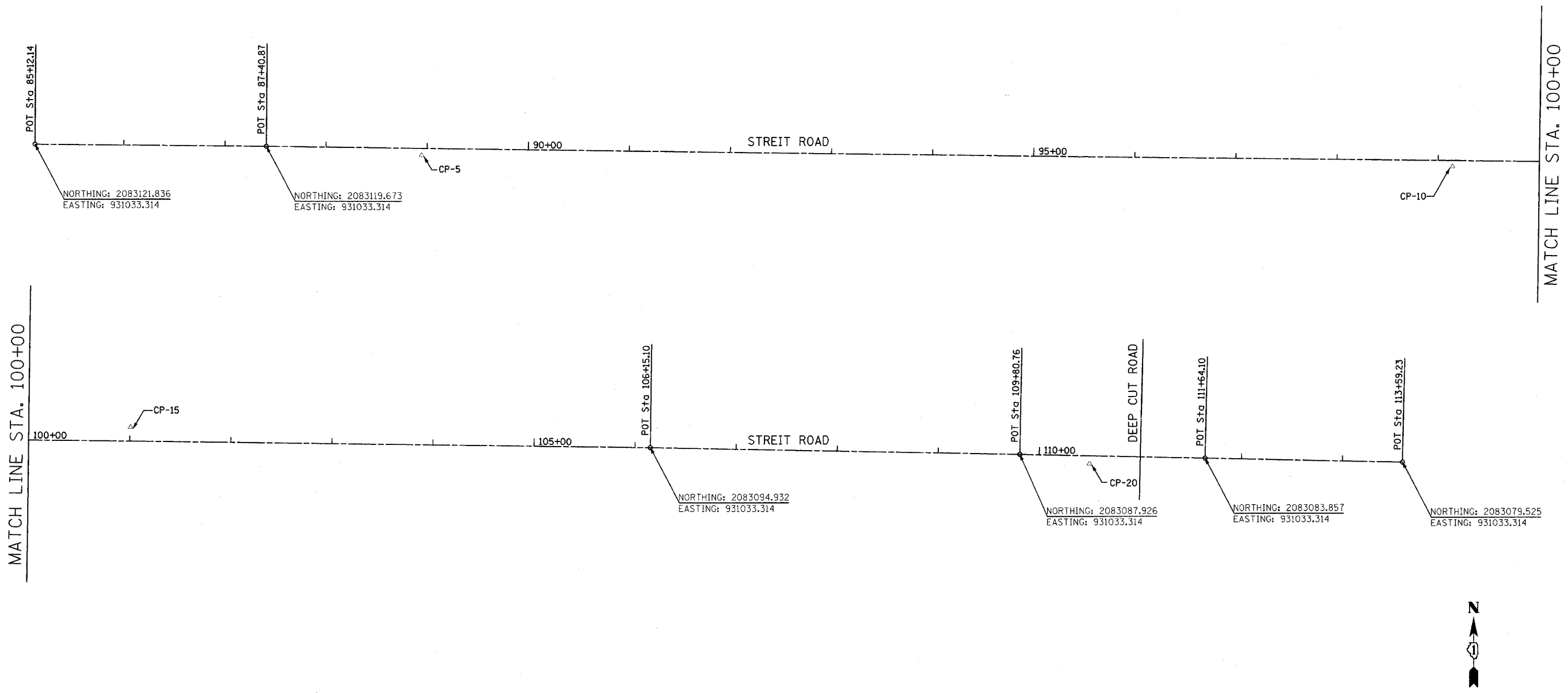


F.A. RTE.	SECTION	COUNTY	TOTAL SHEETS	SHEET NO.
0083	02-00270-00	MCHENRY	37	10
STA.	TO STA.			
FED. ROAD DIST. NO.	ILLINOIS FED. AID PROJECT			
CONTRACT NO.: 83872				



BENCHMARKS

1. SPIKE IN POWER POLE ON NORTH SIDE OF STREIT ROAD AT THE INTERSECTION OF STREIT ROAD AND DEEP CUT ROAD
ELEV.= 927.09
2. SPIKE IN POWER POLE ON NORTH SIDE OF STREIT ROAD, EAST SIDE OF CREEKSIDE DRIVEWAY
ELEV.= 913.77



REVISIONS	
NAME	DATE

ILLINOIS DEPARTMENT OF TRANSPORTATION
ALIGNMENT AND BENCHMARKS
T.R. 0083 (STREIT ROAD) OVER
NORTH BRANCH OF THE KISHWAUKEE RIVER
T.R. 0083 SECTION 02-02700-00-BR
MCHENRY COUNTY
S.N. 056-3067

SCALE: VERT. DRAWN BY JBH
 HORIZ. CHECKED BY AJS
DATE 8/8/2006