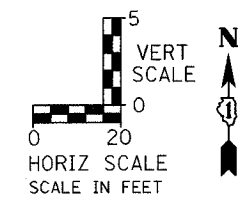
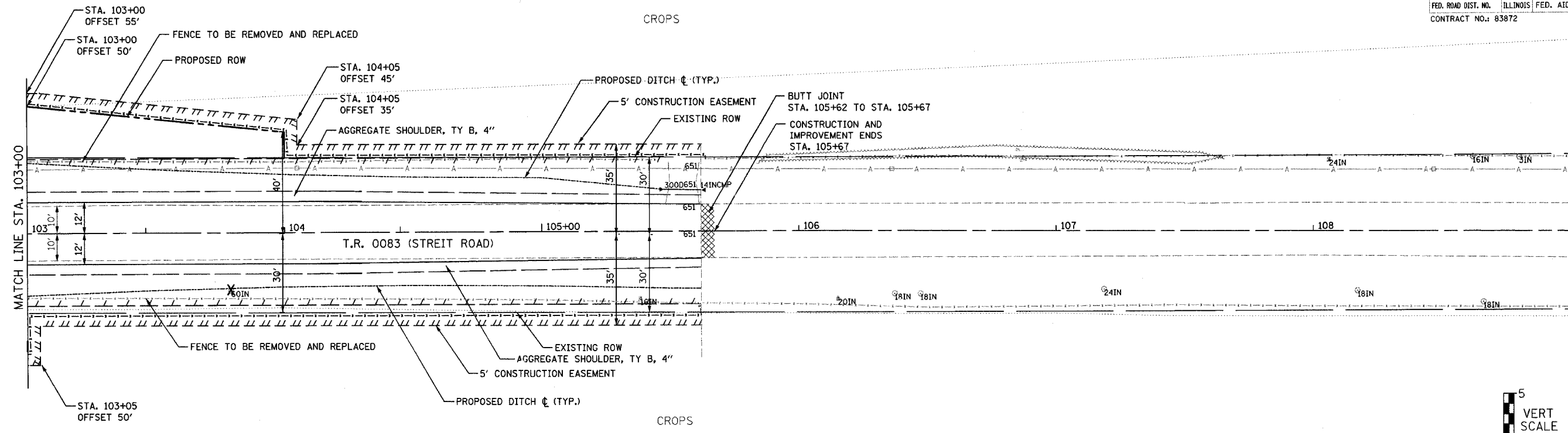
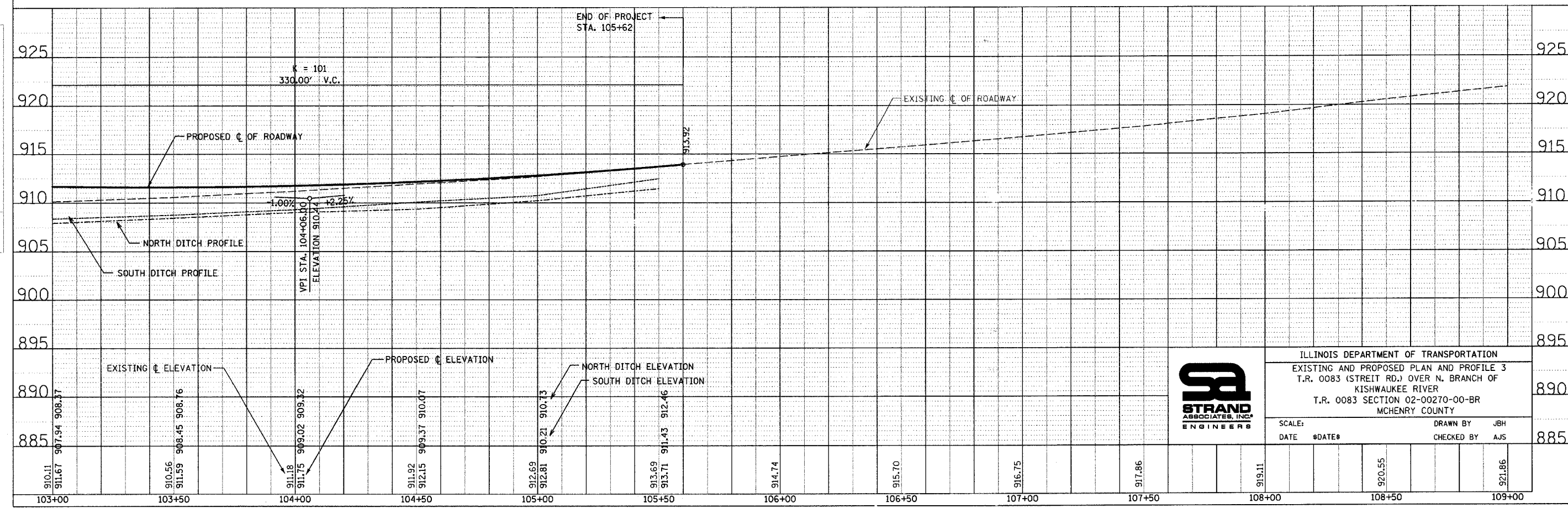


F.A. RTE.	SECTION	COUNTY	TOTAL SHEETS	SHEET NO.
0083 02-00270-00-BR		McHENRY	37	13
STA. 103+00		TO STA. 109+00		
FED. ROAD DIST. NO.		ILLINOIS FED. AID PROJECT		
CONTRACT NO.: 83872				



PLAN SURVEYED BY: DATE: [ ]  
 PLANNED BY: [ ]  
 CHECKED BY: [ ]  
 NOTE BOOK NO.: [ ]  
 DATE OF WAY CHECKED: [ ]  
 PAID FILE NAME: [ ]

PROFILE SURVEYED BY: DATE: [ ]  
 PLANNED BY: [ ]  
 CHECKED BY: [ ]  
 NOTE BOOK NO.: [ ]  
 DATE OF WAY CHECKED: [ ]  
 STRUCTURE NOTATIONS: [ ]



ILLINOIS DEPARTMENT OF TRANSPORTATION  
 EXISTING AND PROPOSED PLAN AND PROFILE 3  
 T.R. 0083 (STREIT RD.) OVER N. BRANCH OF  
 KISHWAUKEE RIVER  
 T.R. 0083 SECTION 02-00270-00-BR  
 McHENRY COUNTY

SCALE: DATE #DATE# DRAWN BY: JBH CHECKED BY: AJS