

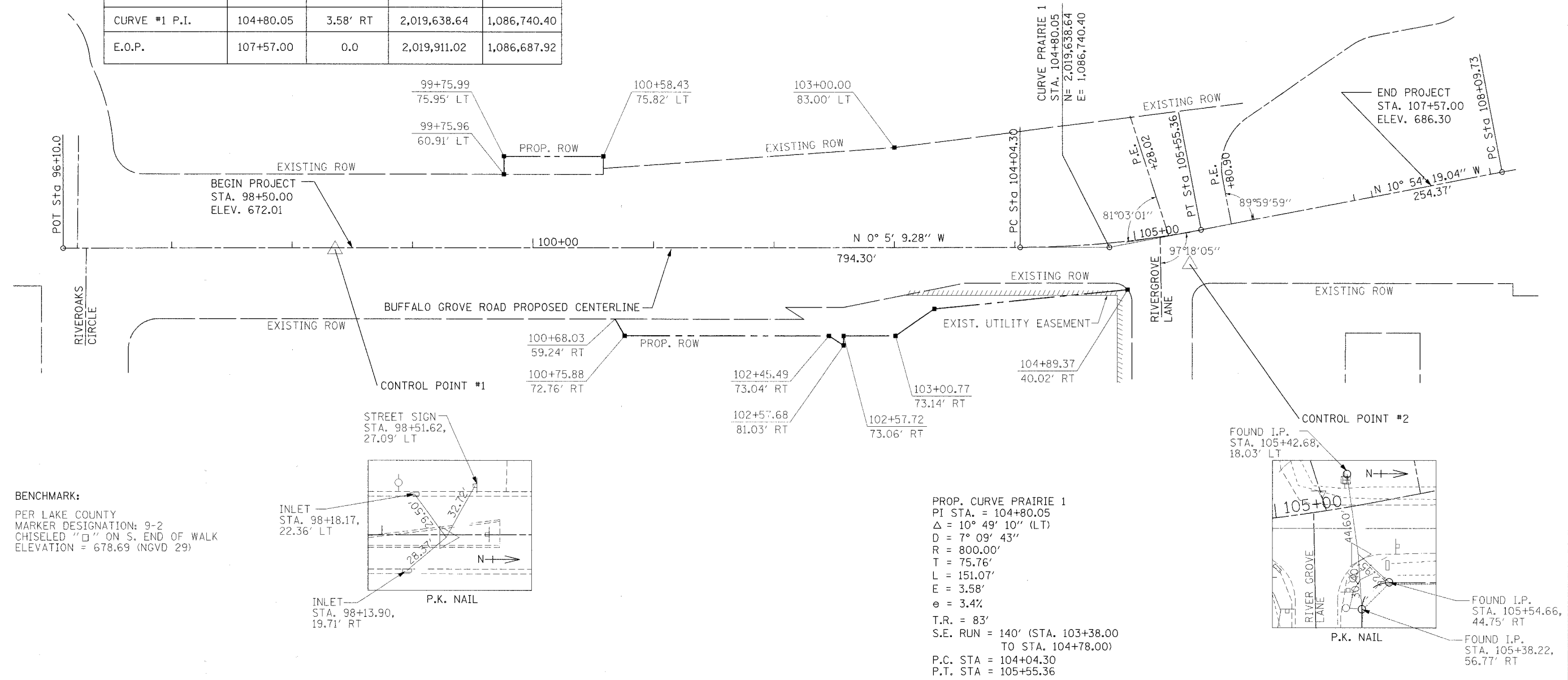
BUFFALO GROVE ROAD ALIGNMENT DATA

DESCRIPTION	STATION	OFFSET	NORTHING	EASTING
B.O.P	98+50.00	0.0	2,019,008.59	1,086,741.35
CURVE #1 P.I.	104+80.05	3.58' RT	2,019,638.64	1,086,740.40
E.O.P.	107+57.00	0.0	2,019,911.02	1,086,687.92

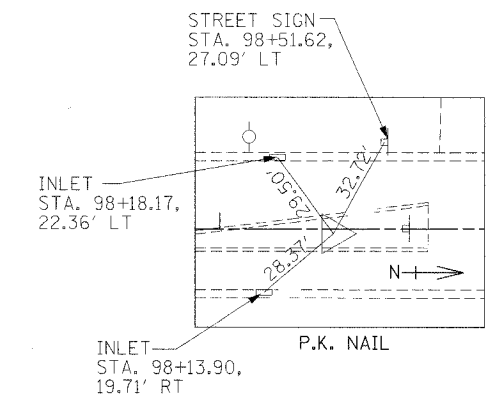


F.A. RTE.	SECTION	COUNTY	TOTAL SHEETS	SHEET NO.
2666	00-00254-01-BR	LAKE	70	5

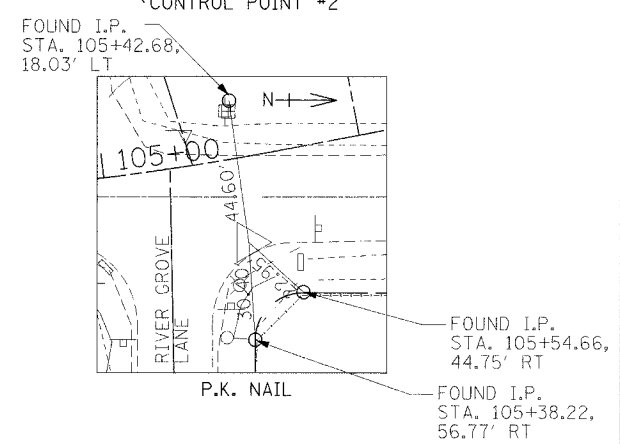
PROJECT NO. BHM-8003(213)  
CONTRACT NO. 83875



**BENCHMARK:**  
PER LAKE COUNTY  
MARKER DESIGNATION: 9-2  
CHISELED "□" ON S. END OF WALK  
ELEVATION = 678.69 (NGVD 29)



**PROP. CURVE PRAIRIE 1**  
PI STA. = 104+80.05  
Δ = 10° 49' 10" (LT)  
D = 7° 09' 43"  
R = 800.00'  
T = 75.76'  
L = 151.07'  
E = 3.58'  
e = 3.4%  
T.R. = 83'  
S.E. RUN = 140' (STA. 103+38.00 TO STA. 104+78.00)  
P.C. STA = 104+04.30  
P.T. STA = 105+55.36



HORIZONTAL AND VERTICAL CONTROL

	DESCRIPTION	NORTHING	EASTING	ELEVATION	STATION	OFFSET
BENCHMARK #1	CHISELED SQUARE ON SOUTH END OF WALK AT LEIKAMS TAP. AT INT. OF IL 21 AND US 45, GO NW 1 MILE TO MARK	-	-	678.69	-	-
CONTROL POINT #1	SET P.K. IN CONCRETE ISLAND S. OF INDIAN CREEK	2,018,994.180	1,086,742.800	672.765	98+35.59	1.43' RT
CONTROL POINT #2	SET PK. IN ASPHALT N.E. CORNER OF PRAIRIE & RIVER GROVE	2,019,703.750	1,086,754.756	677.25	105+41.20	26.43' RT

**NOTE:**  
THREE POINT TIES ARE PROVIDED ONLY TO FIND GENERAL LOCATION OF CONTROL POINT NOT TO ACCURATELY RECREATE POINT.

REVISIONS	
NAME	DATE

ILLINOIS DEPARTMENT OF TRANSPORTATION  
**ALIGNMENT, TIES AND BENCHMARK**  
BUFFALO GROVE ROAD  
SCALE: VERT.: 1"=50'  
HORIZ.:  
DATE: 7/21/06  
DRAWN BY: SMH  
CHECKED BY: PWK



PLAN  
DATE  
BY  
SERVED  
PROJECT  
NOTED  
RT. OF WAY CHECKED  
NO. FILE NAME

PROFILE  
DATE  
BY  
SERVED  
PROJECT  
NOTED  
RT. OF WAY CHECKED  
NO. FILE NAME

I:\lakeco\0220113\draw\sheet5.dwg