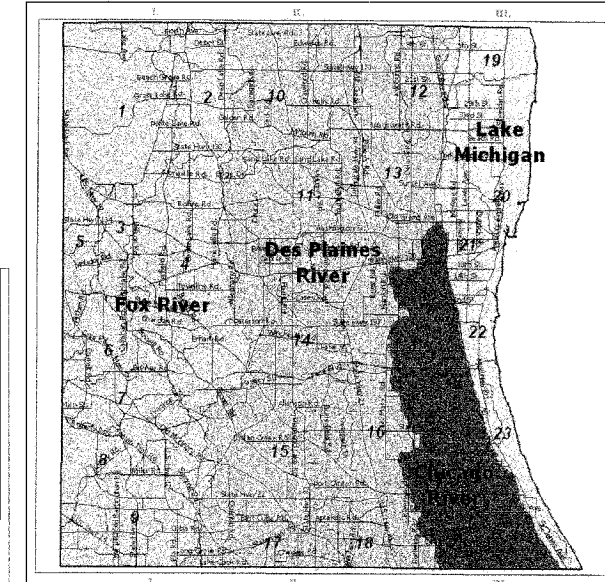


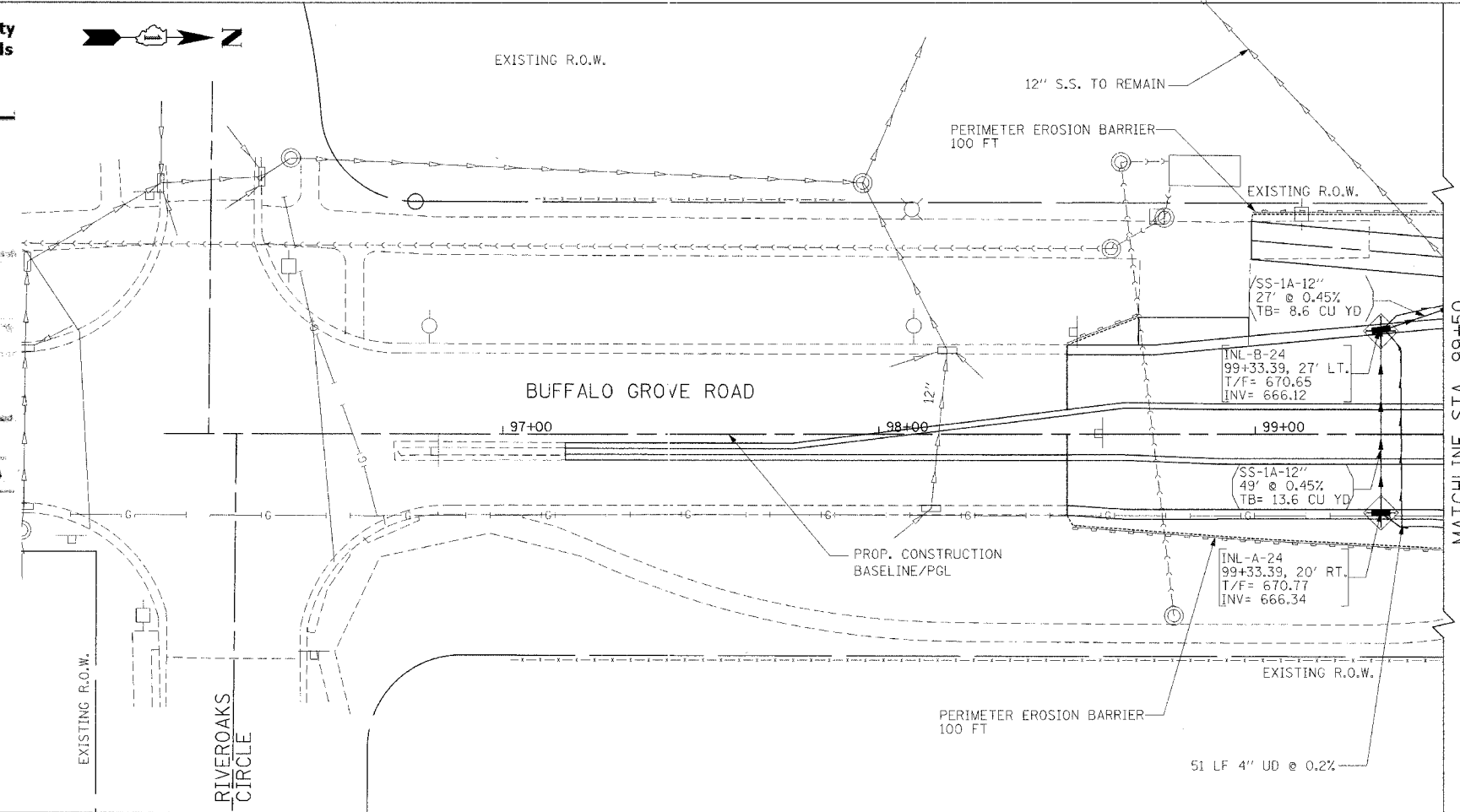
DATE	
BY	
PLAN	REVISIONS
NOTE BOOK	NO.
NO.	

DATE	
BY	
PROFILE	REVISIONS
NOTE BOOK	NO.
NO.	



- Lake County Watersheds**
- 1-4. Upper Fox River
  - 5-10. Upper Des Plaines River
  - 11-15. Middle Des Plaines River
  - 16-20. Lower Des Plaines River
  - 21-23. Fox River
  - 24-26. Upper Fox River
  - 27-30. Middle Fox River
  - 31-33. Lower Fox River
  - 34-36. Upper Des Plaines River
  - 37-40. Middle Des Plaines River
  - 41-43. Lower Des Plaines River
  - 44-46. Fox River
  - 47-50. Upper Fox River
  - 51-53. Middle Fox River
  - 54-56. Lower Fox River
  - 57-60. Upper Des Plaines River
  - 61-63. Middle Des Plaines River
  - 64-66. Lower Des Plaines River
  - 67-70. Fox River
  - 71-73. Upper Fox River
  - 74-76. Middle Fox River
  - 77-80. Lower Fox River

**NOTE:**  
MATERIAL STOCKPILES SHALL NOT BE LOCATED IN FLOODPLAIN/FLOODWAY, WETLANDS AND WETLAND BUFFERS.

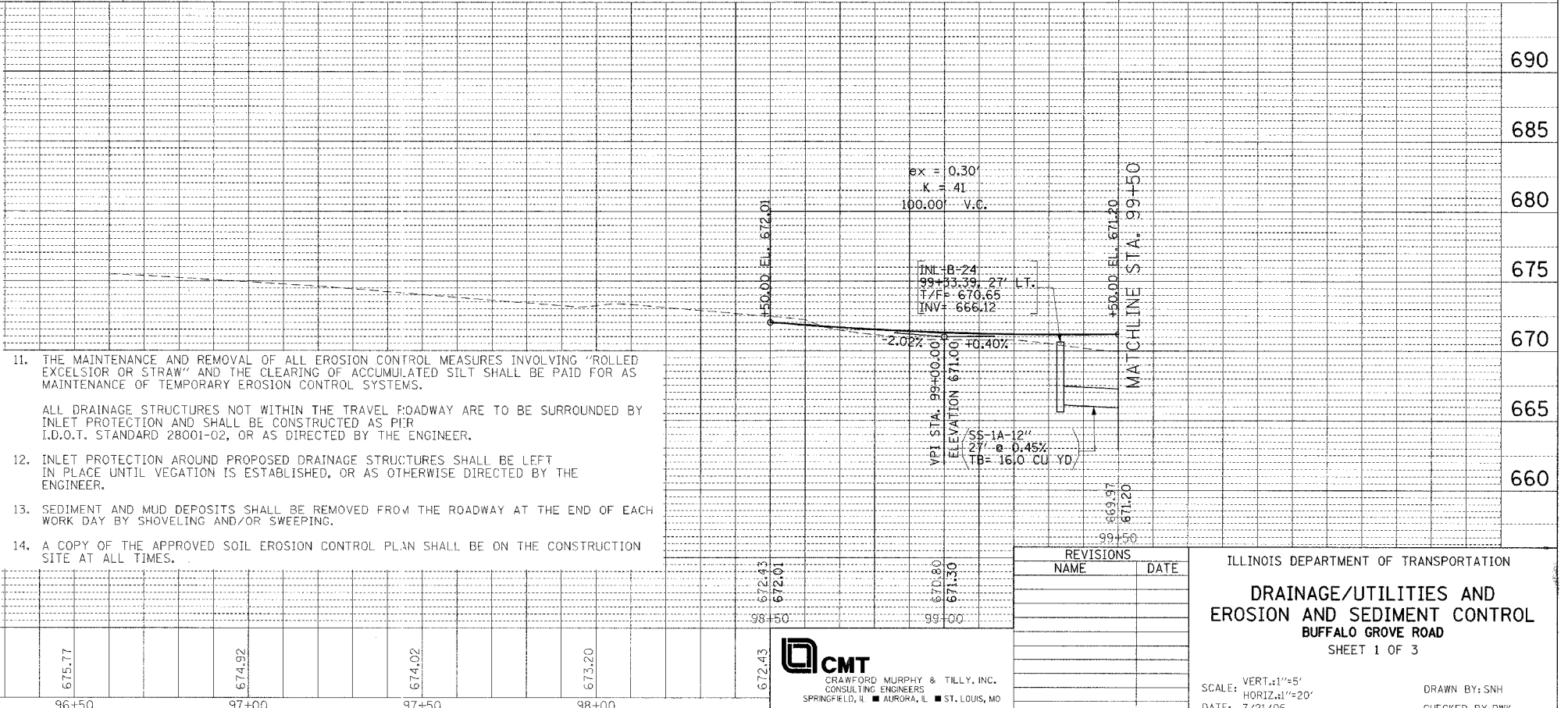


F.A. RTE.	SECTION	COUNTY	TOTAL SHEETS	SHEET NO.
2666	00-00254-01-BR	LAKE	70	18
STA. 98+50.00 TO STA. 99+50.00				
FED. ROAD DIST. NO.		ILLINOIS	FED. AID PROJECT	

PROJECT NO. BHM-8003(213)  
CONTRACT NO.

- LEGEND**
- PROPOSED STORM SEWER
  - EXISTING STORM SEWER
  - PROPOSED UNDERDRAIN
  - EXISTING UNDERDRAIN
  - PROPOSED INLET
  - EXISTING INLET
  - PROPOSED MANHOLE
  - EXISTING MANHOLE
  - EXISTING CATCH BASIN
  - STRUCTURE REMOVAL
  - STRUCTURE ADJUSTMENT
  - STORM SEWER REMOVAL
  - EXISTING GAS LINE
  - EXISTING TELEPHONE LINE
  - EXISTING ELECTRICAL LINE
  - INLET PIPE PROTECTION
  - DITCH CHECK TEMPORARY
  - SITE FLOW DIRECTION
  - DITCH FLOW DIRECTION
  - PERIMETER EROSION BARRIER SILT FILTER FENCE OR OTHER AS APPROVED BY THE ENGINEER
  - LIMITS OF CONSTRUCTION

690	<b>EROSION CONTROL NOTES:</b>	1. PERIMETER EROSION BARRIER SHALL BE INSTALLED AT LOCATIONS SPECIFIED IN THE PLANS AT THE TOE OF SLOPE OR INSIDE THE RIGHT-OF-WAY WHICHEVER IS CLOSER TO THE CENTERLINE, OR AS DIRECTED BY THE ENGINEER PRIOR TO THE START OF ANY EARTHWORK, CULVERT, OR STORM SEWER CONSTRUCTION.
685		2. THE PERIMETER EROSION BARRIER SHALL REMAIN IN PLACE UNTIL ALL DISTURBED AREAS HAVE BEEN STABILIZED WITH VEGETATION. AT THIS TIME, THE PERIMETER EROSION BARRIER SHALL BE REMOVED AND AREAS DAMAGED BY THE FENCE INSTALLATION RESTORED.
680		3. ALL VEGETATIVE AND STRUCTURAL EROSION CONTROL PRACTICES SHALL BE CONSTRUCTED AND MAINTAINED IN ACCORDANCE WITH THE MINIMUM STANDARD AND SPECIFICATIONS OF THE "TECHNICAL REFERENCE MANUAL" OF THE LAKE COUNTY STORMWATER MANAGEMENT COMMISSION. THE "ILLINOIS PROCEDURES AND STANDARDS FOR URBAN SOIL EROSION AND SEDIMENTATION CONTROL" AND THE "STANDARDS AND SPECIFICATIONS FOR SOIL EROSION AND SEDIMENT CONTROL" OF THE ILLINOIS ENVIRONMENTAL PROTECTION AGENCY.
675		4. ALL TEMPORARY AND PERIMETER EROSION AND SEDIMENT CONTROL MEASURES SHALL BE INSPECTED PERIODICALLY AND AFTER EACH RUN-OFF-PRODUCING RAINFALL EVENT TO ASSURE CONTINUED PERFORMANCE OF THEIR INTENDED FUNCTION, THE MAINTENANCE AND REPLACEMENT OF EROSION AND SEDIMENT CONTROLS, WHEN DIRECTED BY THE ENGINEER, SHALL BE PAID FOR AS MAINTENANCE OF TEMPORARY EROSION CONTROL SYSTEMS.
670		5. SOIL STOCKPILES SHOULD BE STABILIZED OR PROTECTED WITH SEDIMENT TRAPPING MEASURES.
665		6. GRAVEL BASE ON AREAS TO BE PAVED SHOULD BE APPLIED AS SOON AS POSSIBLE AFTER FINAL ROADWAY GRADING HAS TAKEN PLACE.
660		7. PERMANENT OR TEMPORARY SOIL STABILIZATION SHOULD BE APPLIED TO DENUDED AREAS WITHIN 14 DAYS TO DENUDED AREAS WHICH MAY NOT BE AT FINAL GRADE BUT THAT WILL REMAIN UNDISTURBED FOR MORE THAN 21 DAYS.
655		8. ALL PERMANENT LANDSCAPING SHOULD BE SCHEDULED AS SOON AS POSSIBLE AFTER ALL WORK IS COMPLETED IN A PARTICULAR AREA. CONSTRUCTION SHOULD BE SCHEDULED TO MINIMIZE THE LENGTH OF TIME A PARTICULAR AREA HAS BEEN DENUDED.
650		9. ALL DISTURBED AREAS SHALL DRAIN TO APPROVED EROSION AND SEDIMENT CONTROL DEVICES AT ALL TIMES DURING LAND-DISTURBING ACTIVITIES UNTIL FINAL STABILIZATION IS ACHIEVED.
650		10. TEMPORARY DITCH CHECKS SHALL BE PLACED, AS DESCRIBED IN THE PLANS AND MEETING THE APPROVAL OF THE ENGINEER, AS CONSTRUCTION PROGRESSES.



11. THE MAINTENANCE AND REMOVAL OF ALL EROSION CONTROL MEASURES INVOLVING "ROLLED EXCELSTOR OR STRAW" AND THE CLEARING OF ACCUMULATED SILT SHALL BE PAID FOR AS MAINTENANCE OF TEMPORARY EROSION CONTROL SYSTEMS.
12. ALL DRAINAGE STRUCTURES NOT WITHIN THE TRAVEL ROADWAY ARE TO BE SURROUNDED BY INLET PROTECTION AND SHALL BE CONSTRUCTED AS PER I.D.O.T. STANDARD 28001-02, OR AS DIRECTED BY THE ENGINEER.
13. SEDIMENT AND MUD DEPOSITS SHALL BE REMOVED FROM THE ROADWAY AT THE END OF EACH WORK DAY BY SHOVELING AND/OR SWEEPING.
14. A COPY OF THE APPROVED SOIL EROSION CONTROL PLAN SHALL BE ON THE CONSTRUCTION SITE AT ALL TIMES.

REVISIONS	
NAME	DATE

ILLINOIS DEPARTMENT OF TRANSPORTATION  
**DRAINAGE/UTILITIES AND EROSION AND SEDIMENT CONTROL**  
BUFFALO GROVE ROAD  
SHEET 1 OF 3

SCALE: VERT. 1"=5'  
HORIZ. 1"=20'  
DATE: 7/21/06  
DRAWN BY: SNH  
CHECKED BY: PWK

**CMT**  
CRAWFORD MURPHY & TILLY, INC.  
CONSULTING ENGINEERS  
SPRINGFIELD, IL ■ AURORA, IL ■ ST. LOUIS, MO

L:\LAKE\00220113\drawsheets\DRN-01.dgn