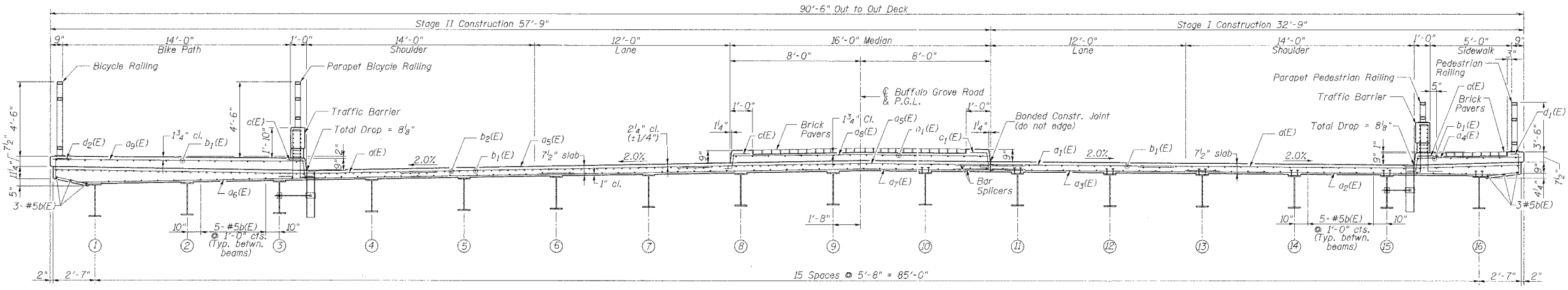


F.A. RTE.	SECTION	COUNTY	TOTAL SHEETS	SHEET NO.
2666	00-00254-01-BR	LAKE	70	30
STA. 98+50		TO STA. 107+57		
FED. ROAD DIST. NO.		ILLINOIS	FED. AID PROJECT	

Sheet 7 of 35 Sheets
 PROJECT NO. BHM-8003(213)
 CONTRACT NO. 83875

SUPERSTRUCTURE BILL OF MATERIAL

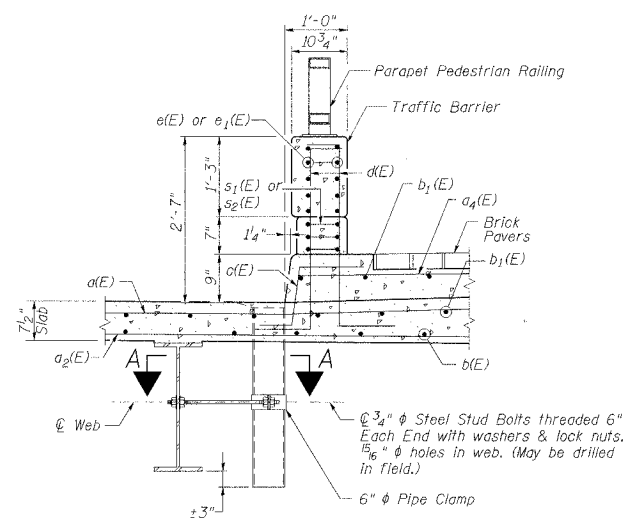
Bar	No.	Size	Length	Shape
a(E)	446	#5	23'-6"	
a ₁ (E)	223	#5	11'-3"	
a ₂ (E)	167	#5	20'-0"	
a ₃ (E)	167	#5	14'-1"	
a ₄ (E)	140	#5	6'-4"	
a ₅ (E)	444	#5	19'-3"	
a ₆ (E)	167	#5	31'-4"	
a ₇ (E)	167	#5	27'-9"	
a ₈ (E)	140	#5	15'-6"	
a ₉ (E)	140	#5	15'-4"	
a ₁₀ (E)	12	#5	26'-2"	
a ₁₁ (E)	24	#5	23'-9"	
a ₁₂ (E)	405	#5	29'-6"	
b ₁ (E)	780	#5	25'-0"	
b ₂ (E)	178	#6	16'-6"	
c(E)	420	#5	1'-11"	
c ₁ (E)	140	#5	1'-11"	
d(E)	448	#5	4'-4"	
d ₁ (E)	140	#4	3'-7"	
d ₂ (E)	140	#4	4'-3"	
e(E)	264	#5	9'-8"	
e ₁ (E)	22	#5	19'-7"	
s(E)	380	#5	4'-2"	
s ₁ (E)	78	#5	8'-0"	
s ₂ (E)	12	#5	4'-10"	
s ₃ (E)	8	#5	4'-11"	
x(E)	20	#5	6'-0"	
x ₁ (E)	182	#5	4'-1"	
Concrete Superstructure				Cu. Yd. 494.7
Reinforcement Bars, Epoxy Coated				Pound 92,540
Bar Splicers				Each 390
Floor Drains				Each 8
Bridge Deck Grooving				Sq. Yd. 741
Protective Coat				Sq. Yd. 1576



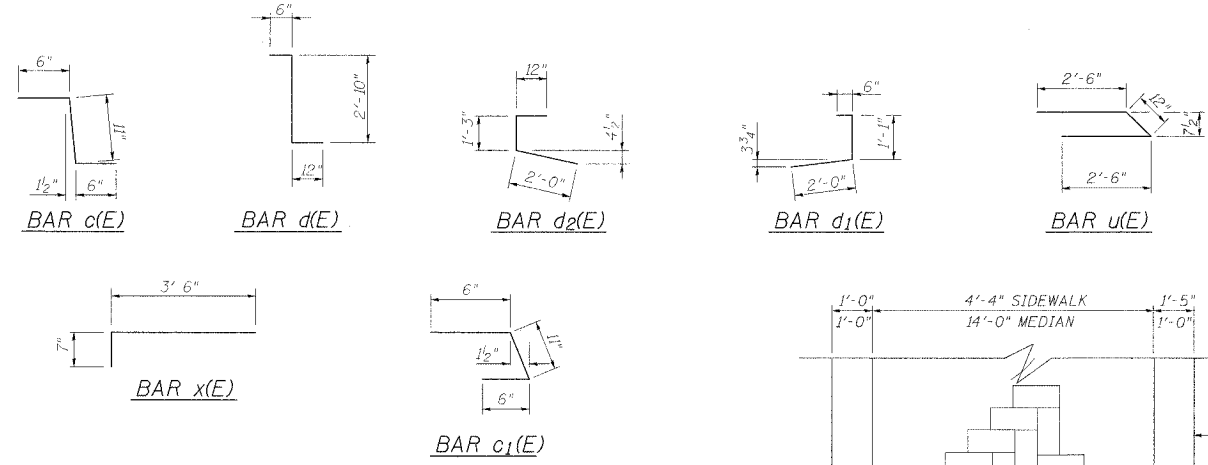
NEAR PIER

TYPICAL CROSS SECTION
(Looking North)

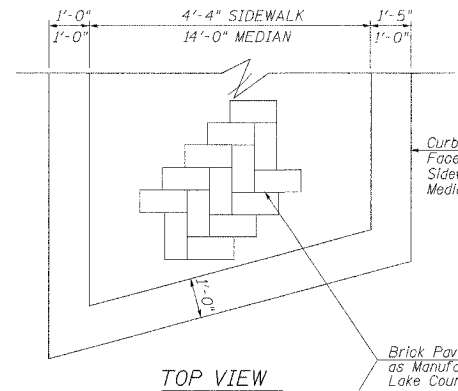
NEAR MIDSPAN



SECTION THRU EAST TRAFFIC BARRIER
(Looking North) (West Parapet Similar)

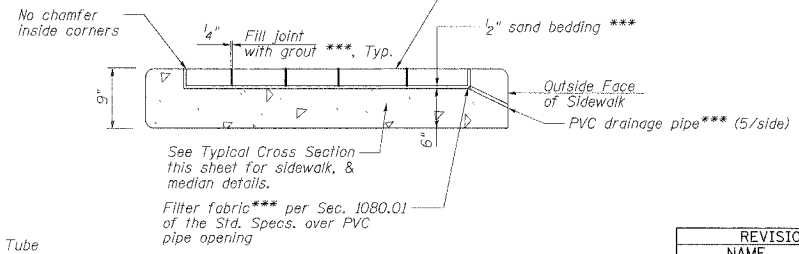


BARS s(E) thru s3(E)



TOP VIEW

Brick Paver shall be Holland Pavers (4" X 8" X 2 3/8", CC Red) as Manufactured by Bend Industries or equal approved by Lake County Division of Transportation.



BRICK PAVER TREATMENT DETAILS

*** Cost shall be included with "Brick Paver".

NOTES:

1. Reinforcement bars designated (E) shall be epoxy coated.
2. Bars indicated thus 3x2-#4 etc. indicates 3 lines of bars with 2 lengths per line.
3. The exterior surfaces of the floor drains shall be painted with the finish coat as specified in the special provisions for Cleaning and Painting New Metal Structures. The exterior surfaces of the drains shall be cleaned according to Steel Structures Painting Council's Spec. SSPC-SP1 prior to painting.
4. Fiberglass pipe shall conform to ASTM D 2996, with short-time rupture strength hoop tensile stress of 30,000 p.s.i. minimum.

REVISIONS	
NAME	DATE

LAKE COUNTY DIVISION OF TRANSPORTATION
SUPERSTRUCTURE DETAILS

BUFFALO GROVE ROAD
 AT INDIAN CREEK BRIDGE
 SECTION 00-00254-01-BR STATION 101+50.00
 LAKE COUNTY STRUCTURE NO. 049-3043
 SCALE: NONE DRAWN BY: TBW
 DATE: 7/21/06 CHECKED BY: ATI, WK

CMT
 CRAWFORD MURPHY & TILLY, INC.
 CONSULTING ENGINEERS
 SPRINGFIELD, IL ■ AURORA, IL ■ ST. LOUIS, MO
 ROCKFORD, IL ■ PEORIA, IL ■ CHICAGO, IL

DATE	
BY	
REVISIONS	
PLANNED	
NOTED	
FILED	
NO.	

DATE	
BY	
REVISIONS	
PLANNED	
NOTED	
FILED	
NO.	

I:\lakeco\0220113\draw\sheet\struct-16-06\superstructure details.dgn