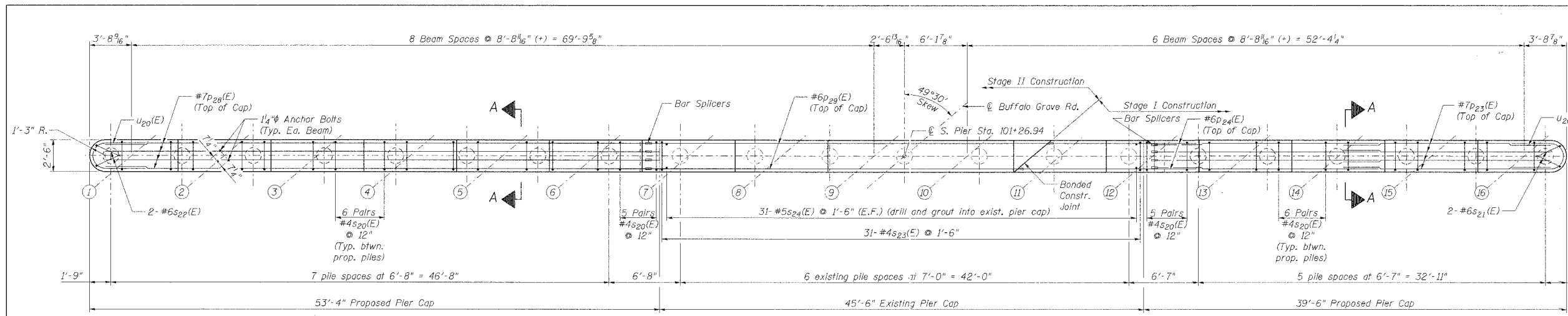
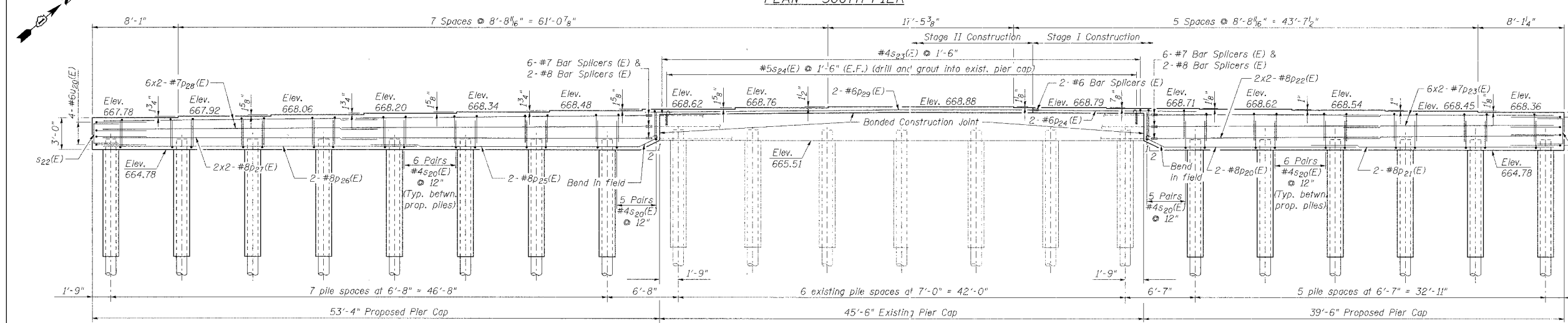


F.A. RTE.	SECTION	COUNTY	TOTAL SHEET NO.
2666	00-00254-01-BR	LAKE	70
STA. 98+50	TO STA. 107+57		44
FED. ROAD DIST. NO.	ILLINOIS FED. AID PROJECT		

Sheet 21 of 35 Sheets
PROJECT NO. BHM-8003(213)
CONTRACT NO. 83875



PLAN - SOUTH PIER



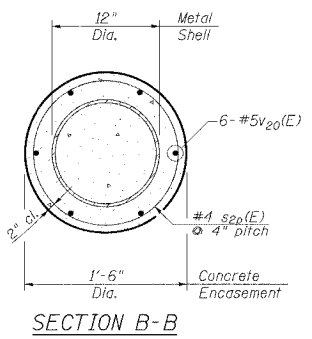
ELEVATION - SOUTH PIER (LOOKING NORTH)

BILL OF MATERIAL

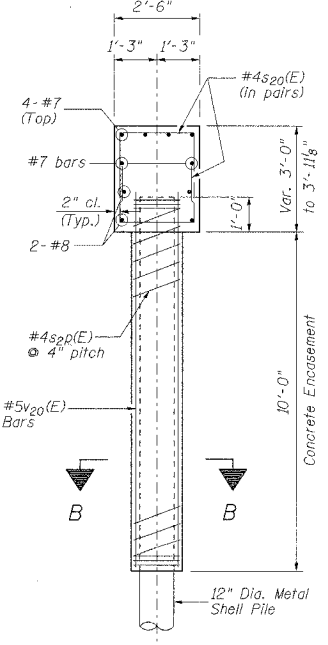
BAR	NO.	SIZE	LENGTH	SHAPE
p20(E)	2	#8	21'-1"	□
p21(E)	2	#8	23'-7"	□
p22(E)	4	#8	21'-4"	□
p23(E)	12	#7	20'-9"	□
p24(E)	2	#6	13'-9"	□
p25(E)	2	#8	31'-2"	□
p26(E)	2	#8	30'-6"	□
p27(E)	4	#8	28'-3"	□
p28(E)	12	#7	27'-8"	□
p29(E)	2	#6	34'-10"	□
s20(E)	164	#4	7'-6"	□
s21(E)	2	#6	9'-2"	□
s22(E)	2	#6	8'-7"	□
s23(E)	31	#4	2'-10"	□
s24(E)	62	#5	1'-8"	□
s25(E)	14	#4	130'-0"	□
u20(E)	8	#6	9'-5"	□
v20(E)	84	#5	11'-0"	□
Structure Excavation			Cu. Yd.	?
Furnishing Metal Pile Shells, 12"			Foot	670
Driving and Filling Shells			Foot	670
Concrete Structures			Cu. Yd.	39.4
Reinforcement Bars Epoxy Coated			Pound	5770
Test Pile Metal Shell			Each	1
Bar Splicers			Each	18

PILE DATA

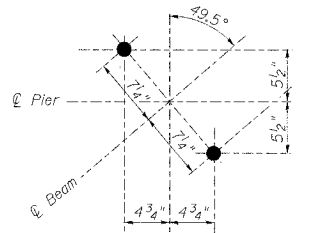
TYPE: 12" Dia. Metal Shell
CAPACITY: 45 Ton
EST. LENGTH: 51.5'
NO. REQUIRED: 14 (Including 1 Test Pile)



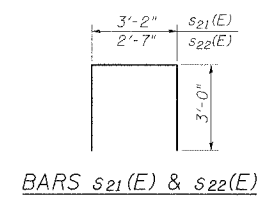
SECTION B-B



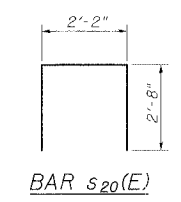
SECTION A-A



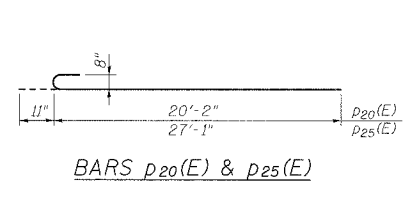
ANCHOR BOLT LAYOUT



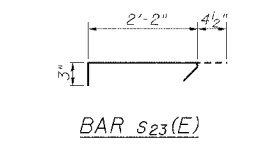
BARS s21(E) & s22(E)



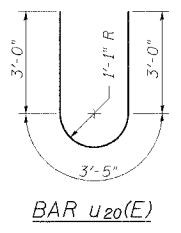
BAR s20(E)



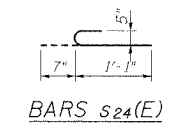
BARS p20(E) & p25(E)



BAR s23(E)



BAR u20(E)



BARS s24(E)

MIN. BAR LAP

#7 BAR = 3'-5"
#8 BAR = 4'-6"

NOTES:

- All edges shall have 3/4" chamfer except as noted.
- Reinforcement Bars designated (E) shall be epoxy coated.
- Cast steps monolithically with cap.
- Space cap reinforcement to miss anchor bolts.
- Minimum lap for spirals = 1/2 turns.
- For details of Bar Splicers, see sheet 29 of 34.

REVISIONS	NAME	DATE

LAKE COUNTY DIVISION OF TRANSPORTATION
SOUTH PIER DETAILS

BUFFALO GROVE ROAD
AT INDIAN CREEK BRIDGE
SECTION 00-00254-01-BR STATION 101+50.00
LAKE COUNTY STRUCTURE NO. 049-3043
SCALE: NONE DRAWN BY: TBW
DATE: 7/21/06 CHECKED BY: ATI, WK

