

**INDEX OF SHEETS**

FOR INDEX OF SHEETS, SEE SHEET NO. 2

PROJECT LOCATED IN CITY OF NAPERVILLE

**DESIGN DESIGNATION**

	ADT (2005)	POSTED SPEED	DESIGN SPEED
BAILEY ROAD (URBAN-LOCAL STREET)	11,375	30 MPH	35 MPH
	ADT (2030)		
	12,000		

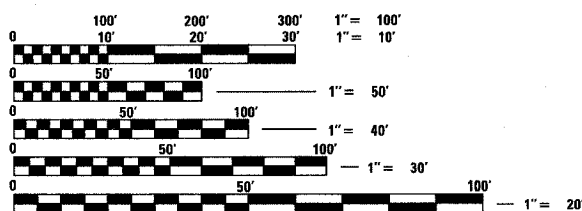
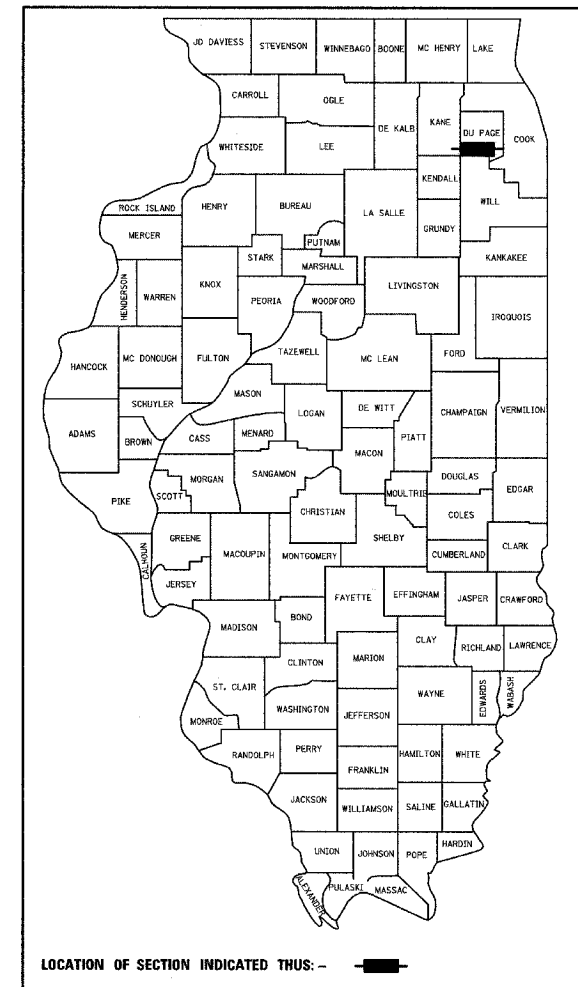
STATE OF ILLINOIS  
DEPARTMENT OF TRANSPORTATION  
DIVISION OF HIGHWAYS

# PLANS FOR PROPOSED FEDERAL AID LOCAL AGENCY IMPROVEMENT

FAU ROUTE 1545 (BAILEY ROAD)  
OVER WEST BRANCH DuPAGE RIVER

CITY OF NAPERVILLE  
SECTION 00-00115-00-BR  
PROJECT NO.: BHM-8003 (343)  
BRIDGE REPLACEMENT  
DuPAGE COUNTY  
JOB NO: C-91-062-04

F.A.U. RTE.	SECTION	COUNTY	TOTAL SHEETS	SHEET NO.
1545	00-00115-00 BR	DuPAGE	97	1
FED. ROAD DIST. NO.	ILLINOIS	FED. AID PROJECT	CONTRACT NO. 83961	



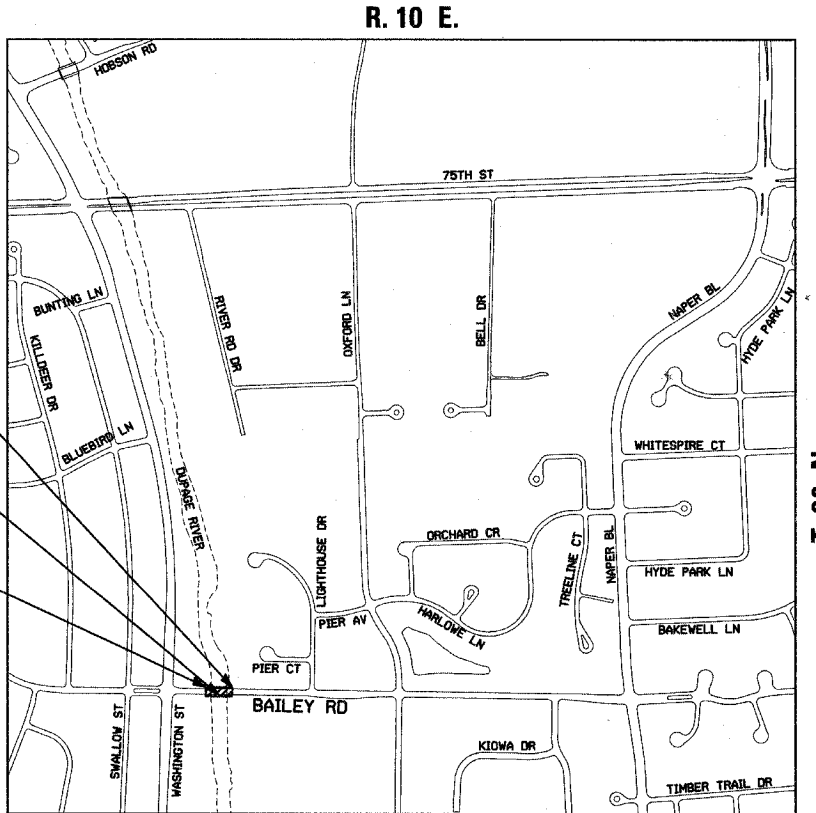
FULL SIZE PLANS HAVE BEEN PREPARED USING STANDARD ENGINEERING SCALES, REDUCED SIZED PLANS WILL NOT CONFORM TO STANDARD SCALES. IN MAKING MEASUREMENTS ON REDUCED PLANS, THE ABOVE SCALES MAY BE USED.

J.U.L.I.E.  
JOINT UTILITY LOCATION INFORMATION FOR EXCAVATION  
1-800-892-0123

PROJECT ENDS  
STA 5+50.00

PROJECT LOCATION

PROJECT BEGINS  
STA 1+31.77



NOT TO SCALE  
LISLE TOWNSHIP

GROSS LENGTH OF PROJECT = 419 FT. = 0.08 MI.  
NET LENGTH OF PROJECT = 419 FT. = 0.08 MI.

**BAILEY ROAD OVER WEST BRANCH OF DuPAGE RIVER**  
STRUCTURE NO. 022-3028 (STA. 2+99.15)  
REMOVE EXISTING 3-SPAN PPC DECK BEAM SUPERSTRUCTURE AND CONSTRUCT 3-SPAN CONTINUOUS STEEL WF BEAM SUPERSTRUCTURE. SUBSTRUCTURE IS TO BE WIDENED.

Signed *[Signature]*  
Spiros Pantazis, P.E. II, Lic. No. 062-054027  
Expires 11-30-2007  
Date July 12, 2007

Signed *[Signature]*  
Daniel Gacek, P.E. II, Lic. No. 062-048355  
Expires 11-30-2007  
Date July 5, 2007  
For Electrical Drawings 67 to 89

**CITY OF NAPERVILLE**

APPROVED July 5 20 07  
*[Signature]*  
CITY ENGINEER

PASSED July 17 20 07  
*[Signature]* CHRISTOPHER HOLT  
DISTRICT 1 ENGINEER OF LOCAL ROADS AND STREETS

RELEASED FOR BID  
BASED ON LIMITED  
REVIEW July 17 20 07  
*[Signature]*  
DIANE O'KEEFE  
DEPUTY DIRECTOR OF HIGHWAYS, REGION 1 ENGINEER

ASSOCIATE FIELD ENGINEER: JESSICA FELICIANO (847) 705-4487  
CONSULTANT SERVICES ENGINEER: SPIROS PANTAZIS, P.E., S.E. (773) 792-9000

**CONTRACT NO. 83961**

**TY-LIN INTERNATIONAL**  
PRINTED BY THE AUTHORITY OF THE STATE OF ILLINOIS