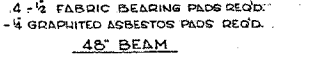
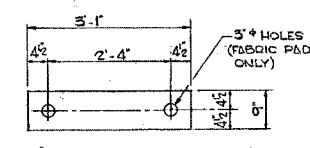
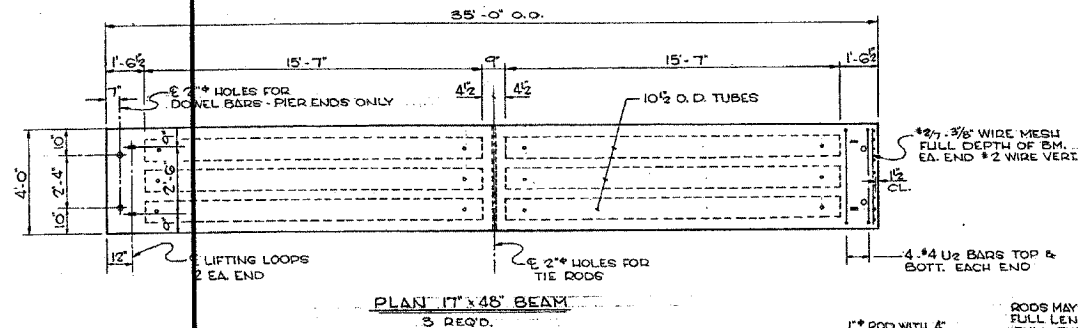
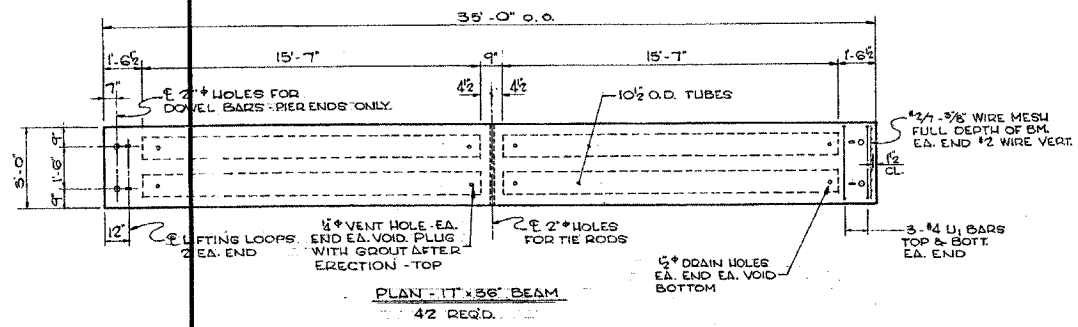


STATE OF ILLINOIS  
DEPARTMENT OF TRANSPORTATION

ROUTE NO.	SECTION	COUNTY	ISLANDS	SHEET NO.	SHEET NO.
1545	*	DUPAGE	97	62	- SHEETS
FED. ROAD DIST. NO.	ILLINOIS	FED. AID PROJ. NO.	CONTRACT NO. 83961		
* 00-00115-00-BR					

SECTION	ROUTE No.	SHEET
79 <sup>TH</sup> ST BRIDGE		6 OF 13
COUNTY	ROAD DISTRICT	
DUPAGE	LISLE	



**GENERAL NOTES:**

PRESTRESSING STEEL SHALL BE NON-GALVANIZED HIGH STRENGTH STRESS-RELIEVED 7-WIRE STRAND. THE NOMINAL DIAMETER SHALL BE 7/16" AND THE NOMINAL CROSS-SECTIONAL AREA SHALL BE 0.109 SQ. INCH.

LIFTING LOOPS SHALL BE 3 - 7/16" DIA. OR 1/2" DIA. STRANDS.

THE 1" DIA. RODS IN THE TRANSVERSE TIE ASSEMBLY SHALL BE TIGHTENED TO A SNUG FIT AND THE THREADS SET.

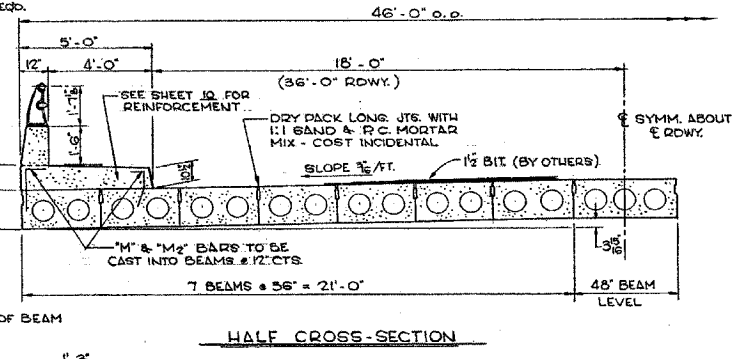
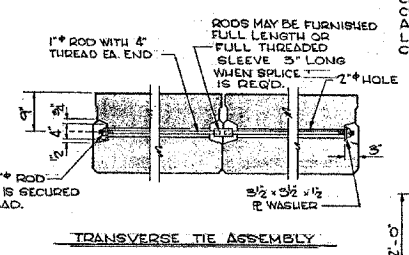
POCKETS THAT RECEIVE TRANSVERSE TIE BAR ON OUTSIDE BEAM SHALL BE FILLED WITH GROUT AFTER TRANSVERSE TIE ASSEMBLY IS IN PLACE.

COST OF REINFORCEMENT AND ACCESSORIES CASTED INTO BEAMS, OF BEARING PADS, OF FURNISHING AND ASSEMBLING TRANSVERSE TIES, OF FURNISHING, DRILLING AND GROUTING DOWEL HOLES, AND OF GROUTING LONGITUDINAL SHEAR KEYS IS INCLUDED IN UNIT PRICE BID FOR "PRECAST PRESTRESSED CONCRETE BRIDGE DECK."

STEEL FOR DOWEL RODS, TRANSVERSE TIE RODS SHALL BE S.A.E. 1020, STRUCTURAL STEEL A.S.T.M. DESIGNATION A-36 OR INTERMEDIATE GRADE A.S.T.M. DESIGNATION A-15.

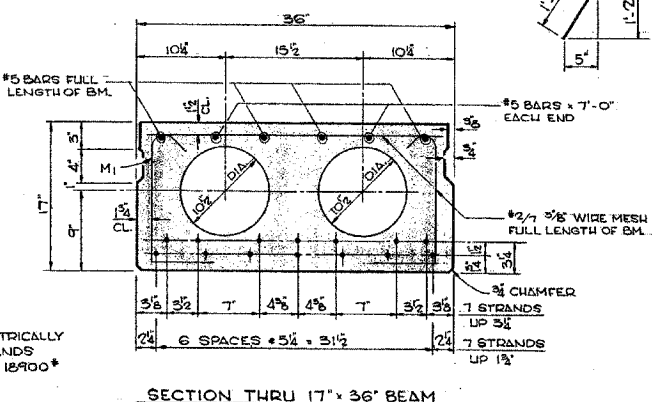
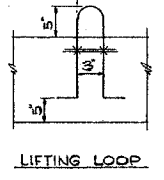
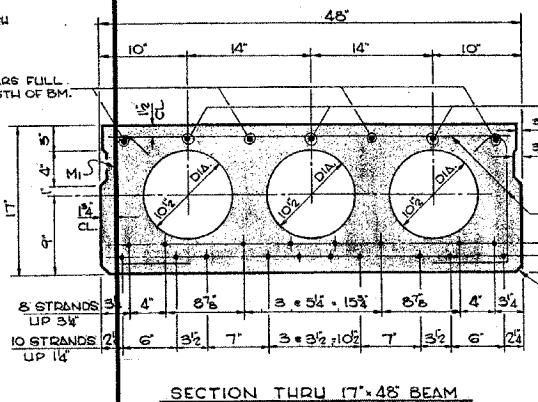
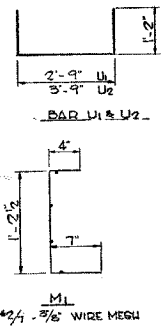
AFTER FABRICATION THE TRANSVERSE TIE ASSEMBLIES (TIE RODS, NUTS, WASHERS AND SLEEVES) SHALL BE HOT DIPPED GALVANIZED IN ACCORDANCE WITH A.S.T.M. DESIGNATION A-153.

AN ALTERNATE STRAND PATTERN USING EXTRA HIGH STRENGTH PRESTRESSING STRAND (270 KSI) IS PERMITTED. SEE SPECIAL PROVISIONS.



BILL OF MATERIAL

ITEM	UNIT	QUAN.
PRECAST PRESTRESSED CONC. BRIDGE DECK 17'	SQ FT	4850



NOTE:  
PLACE STRANDS SYMMETRICALLY ABOUT C BEAMS. STRANDS 7 WIRE 7/16" STRESS TO 18900\* PER STRAND.

DECK BEAM DETAILS  
79<sup>TH</sup> STREET BRIDGE  
LISLE ROAD DISTRICT  
DUPAGE COUNTY

TYLIN INTERNATIONAL

DESIGNED	- SNB
CHECKED	- SP
DRAWN	- SNB
CHECKED	- SP

FOR INFORMATION ONLY

NOTE:  
ELEVATIONS SHOWN ON EXISTING PLANS ARE ON A DIFFERENT VERTICAL DATUM THAN CONTRACT PLANS.

EXISTING DECK BEAM DETAILS

BAILEY ROAD OVER THE  
WEST BRANCH OF THE DUPAGE RIVER  
FAU 1545  
SECTION 00-00115-00-BR STA. 2+99.15  
DUPAGE COUNTY  
S.N. 022-3028