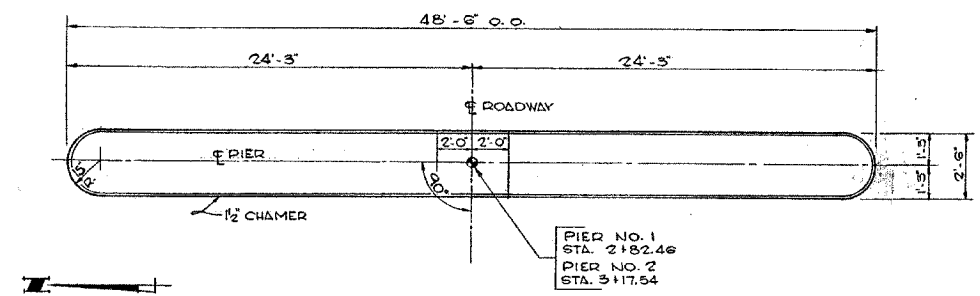


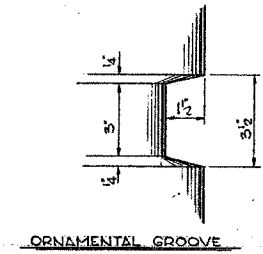
STATE OF ILLINOIS
DEPARTMENT OF TRANSPORTATION

ROUTE NO.	SECTION	COUNTY	STA.	SHEET NO.	SHEET NO.
1545	*	DUPAGE	97	64	SHEETS
FED. ROAD DIST. NO.		ILLINOIS	FED. AID PROJ. NO.	CONTRACT NO. 83961	
* 00-00115-00-BR					

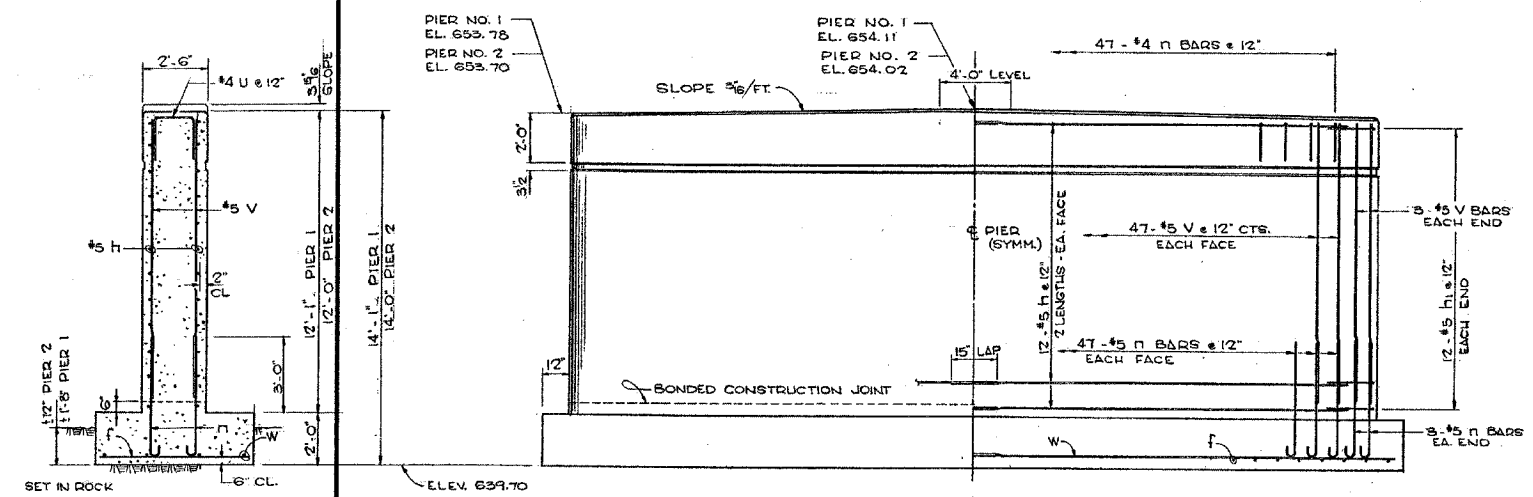
SECTION	ROUTE No.	SHEET
THRU ST BRIDGE		1 OF 13
COUNTY	ROAD DISTRICT	
DUPAGE	LISLE	



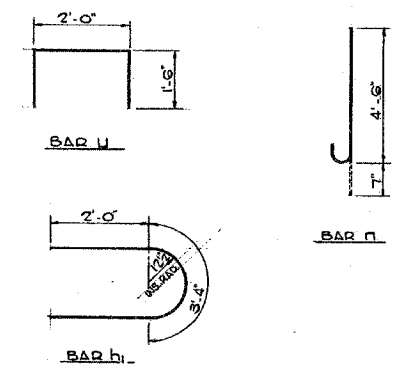
TOP VIEW
NO SCALE



ORNAMENTAL GROOVE

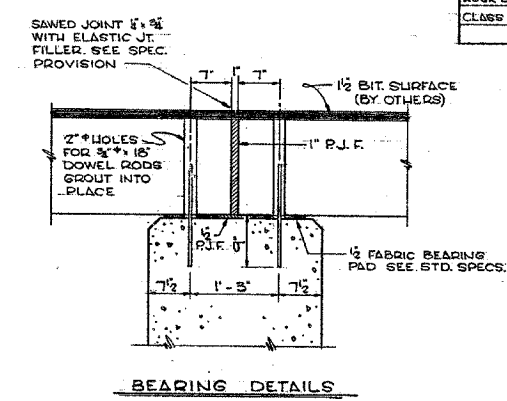


ELEVATION - PIER 1 & 2
NO SCALE

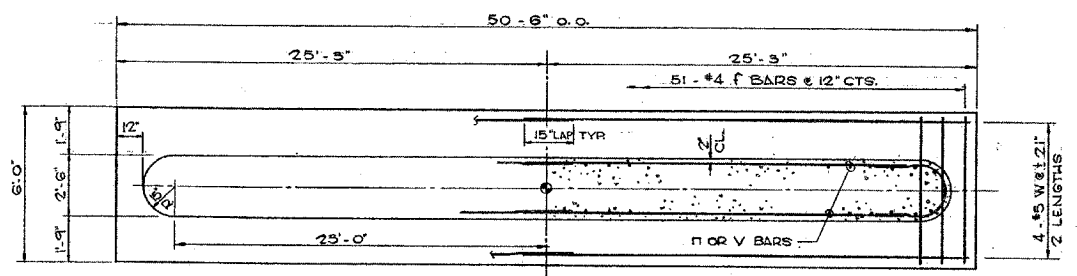


BILL OF MATERIAL - 2 PIERS

BAR	NO.	SIZE	LENGTH	SHAPE
f	102	#4	5'-6"	—
h	96	#5	25'-6"	—
h ₁	46	#5	7'-4"	U
n	200	#5	5'-1"	—
u	94	#4	5'-0"	U
v	200	#5	11'-3"	—
w	16	#5	25'-9"	—
CLASS X CONCRETE CU. YDS.				153.2
REINFORCEMENT BARS LBS.				7240
ROCK EXC. FOR STRUCT. CU. YDS.				28.1
CLASS B EXC. FOR STRUCT. CU. YDS.				111.0



BEARING DETAILS



FOOTING PLAN
NO SCALE

PIER DETAILS
79TH STREET BRIDGE
LISLE ROAD DISTRICT
DUPAGE COUNTY

FOR INFORMATION ONLY

NOTE:
ELEVATIONS SHOWN ON EXISTING PLANS ARE ON A DIFFERENT VERTICAL DATUM THAN CONTRACT PLANS.

TYLIN INTERNATIONAL

DESIGNED	-	SNB
CHECKED	-	
DRAWN	-	SNB
CHECKED	-	

EXISTING PIER DETAILS

BAILEY ROAD OVER THE
WEST BRANCH OF THE DUPAGE RIVER
FAU 1545
SECTION 00-00115-00-BR STA. 2+99.15
DUPAGE COUNTY
S.N. 022-3028