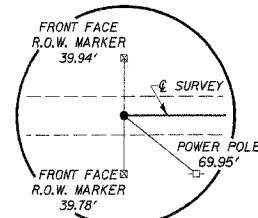
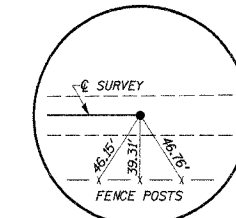


ROUTE	SECTION	COUNTY	TOTAL SHEETS	SHEET NO.
C.H. 5	04-0063	STEPHENSON	29	4
STA. 249+79.92		TO STA. 266+77.41		
ILLINOIS				

CONTRACT NO. 85391

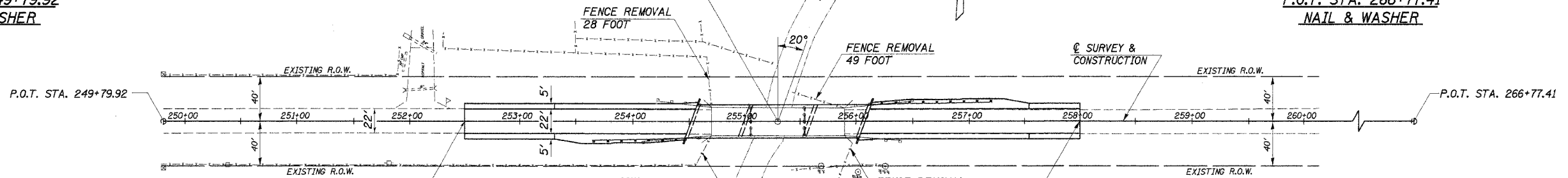


P.O.T. STA. 249+79.92  
NAIL & WASHER



P.O.T. STA. 266+77.41  
NAIL & WASHER

STA. 255+30 - SPECIAL BRIDGE DESIGN  
CONTINUOUS COMPOSITE WIDE FLANGE  
BEAM BRIDGE, THREE SPANS AT 48', 58', 48';  
30'-0" ROADWAY, SKEW = 20°.



IMPROVEMENT BEGINS  
STA. 252+50

IMPROVEMENT ENDS  
STA. 258+00

**CHANNEL EXCAVATION**

THE CHANNEL SHALL BE EXCAVATED AS SHOWN WITHIN THE LIMITS OF THE PROPOSED STRUCTURE THEN TAPER TO THE EXISTING CHANNEL AT THE R.O.W. LINES. SUITABLE EXCAVATED MATERIAL TO BE USED IN THE EMBANKMENT AS DIRECTED BY THE ENGINEER.

CHANNEL EXCAVATION = 330 CU. YD.

**BARBED WIRE FENCE, 4 STRAND**

40' LT. STA. 254+67.50 TO 15' LT. STA. 254+57.02	=	27 FOOT
39.1' RT. STA. 254+56.00 TO 15' RT. STA. 254+46.10	=	26 FOOT
26' LT. STA. 255+43.00 TO 15' LT. STA. 256+13.90	=	72 FOOT
40' RT. STA. 255+89.00 TO 15' RT. STA. 256+02.98	=	29 FOOT
<b>TOTAL</b>	<b>=</b>	<b>154 FOOT</b>

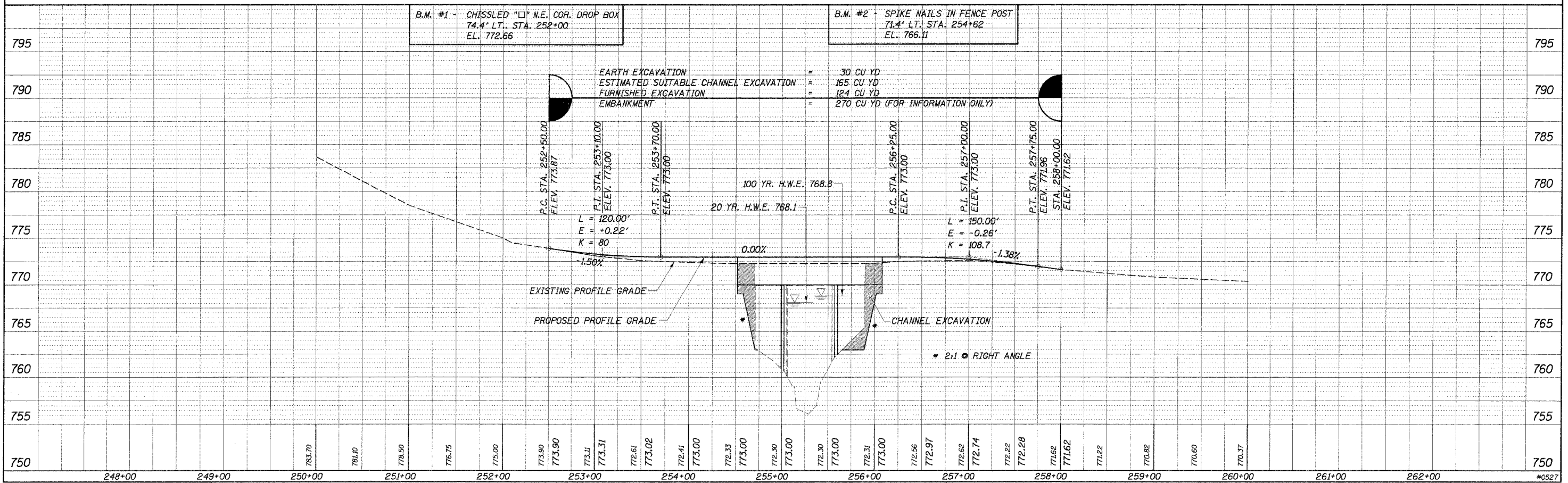
**EXISTING STRUCTURE NO. 089-3013**  
3-SPAN CONTINUOUS STEEL I-BEAM BRIDGE WITH CONCRETE DECK ON OPEN STEEL PIERS WITH CLOSED TIMBER AND STEEL PILE ABUTMENTS AND WINGS. 120'-0" BK.-BK. ABUTS. 24'-0" O.-O. DECK, 0° SKEW.

REMOVAL OF EXISTING STRUCTURES = 1 EACH

**UTILITIES**

ELECTRIC - COMED  
TELEPHONE - VERIZON  
GAS - NICOR

SEE SHEET 5 FOR SHOULDER AND GUARDRAIL DETAILS.



B.M. #1 - CHISSELED "X" N.E. COR. DROP BOX  
74.4' LT. STA. 252+00  
EL. 772.66

B.M. #2 - SPIKE NAILS IN FENCE POST  
71.4' LT. STA. 254+62  
EL. 766.11

EARTH EXCAVATION = 30 CU YD  
ESTIMATED SUITABLE CHANNEL EXCAVATION = 165 CU YD  
FURNISHED EXCAVATION = 124 CU YD  
EMBANKMENT = 270 CU YD (FOR INFORMATION ONLY)

P.C. STA. 252+50.00  
ELEV. 773.87  
L = 120.00'  
E = +0.22'  
K = 80  
P.T. STA. 253+70.00  
ELEV. 773.00

100 YR. H.W.E. 768.8  
20 YR. H.W.E. 768.1

P.C. STA. 256+25.00  
ELEV. 773.00  
L = 150.00'  
E = -0.26'  
K = 108.7  
P.T. STA. 257+75.00  
ELEV. 771.96  
STA. 258+00.00  
ELEV. 771.62

EXISTING PROFILE GRADE

PROPOSED PROFILE GRADE

CHANNEL EXCAVATION

\* 2:1 RIGHT ANGLE