

FAS RTE	SECTION	COUNTY	TOTAL SHEETS	SHEET NO.
TR 205	05-09126-00-BR 05-17134-00-BR	HENRY	11	1
F.H.W.A. REG.		ILLINOIS	PROJECT BROS-073(53)	

STATE OF ILLINOIS
DEPARTMENT OF TRANSPORTATION
PLANS FOR
PROPOSED LOCAL AGENCY IMPROVEMENT
FEDERAL AID BRRP PROJECT
HENRY COUNTY

INDEX OF SHEETS

- Sheet No. 1 Cover Sheet
- Sheet No. 2 Plan & Profile
- Sheet No. 3 Cross Sections
- Sheet No. 4 General Plan & Elevation
- Sheet No. 5 P.P.C. Deck Beam Superstructure
- Sheet No. 6 P.P.C. Deck Beam Details
- Sheet No. 7 P.P.C. Deck Beam Pile Bent Abutment
- Sheet No. 8 P.P.C. Deck Beam Pile Bent Pier
- Sheet No. 9 Type S-1 Railing
- Sheet No. 10 Name Plate
- Sheet No. 11 Pile Details

SECTION 05-09126-00-BR/05-17134-00-BR
PROJECT BROS-073(53) JOB C-92-001-07
CORNWALL/MUNSON TOWNSHIP TR 205
CONTRACT 85394

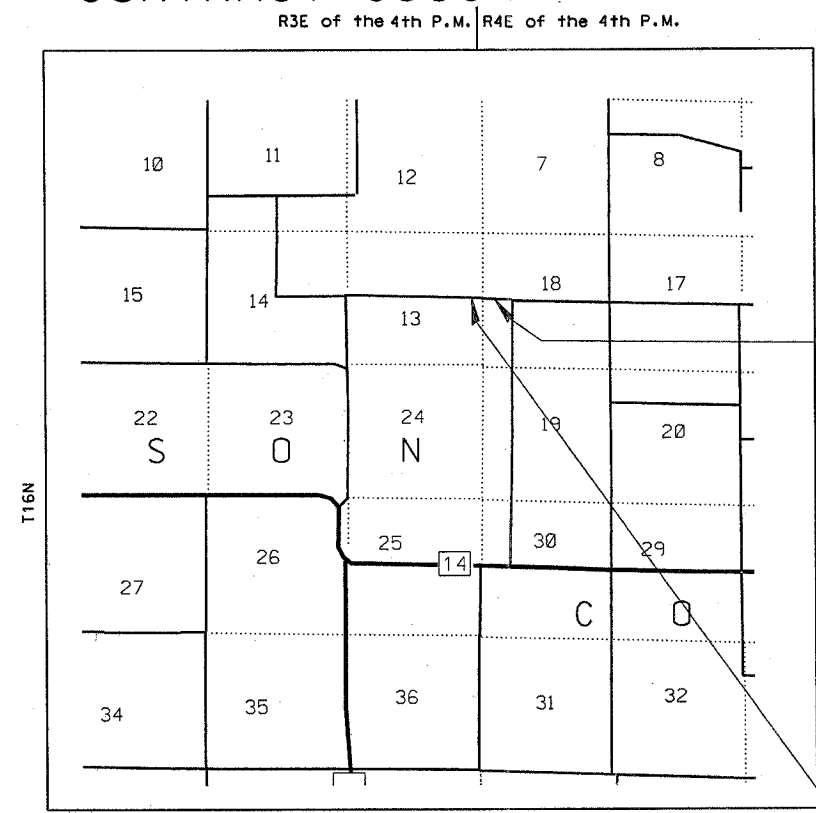
STANDARDS

702001-06 280001-02
BLR 21-6

CONSTRUCTION TYPE CODE X080-2A
SCHEDULE OF QUANTITIES

CODE QUANTITY UNIT DESCRIPTION

20100110	121	Units	Tree removal (6-15 Units)
20100210	151	Units	Tree Removal (over 15 Units)
20200100	340	Cu Yd	Earth Excavation
20300100	548	Cu Yd	Channel Excavation
20400800	819	Cu Yd	Furnished Excav
25000330	0.51	Acre	Seeding Cl 6
25000400	46	Pound	Nitrogen Fert Nutr
25000500	46	Pound	Phosphorus Fert Nutr
25000600	46	Pound	Potassium Fert Nutr
25100120	1.0	Ton	Mulch Method 2
28000300	4	Each	Temp Ditch Checks
28100707	334	Sq Yd	Stone Dump Rip CL A4
35101400	586	Ton	Agg Base Cse B
50100100	1	Each	Rem Exist Struct
50200100	123	Cu Yd	Structure Excavation
50300225	97.8	Cu Yd	Conc Struct
50400405	2874	Sq Ft	P P Conc Dk Bm 21 Dp
50800105	6800	Pound	Reinforcement Bars
50900205	240	Foot	Steel Railing Ty S1
51201400	968	Foot	Fur Steel Piles HP 10x42
51202700	968	Foot	Driving Steel Piles
51203400	2	Each	Test Pile Steel HP 10x42
51204315	2.1	Cu Yd	Concrete Encasement
51204600	20	Each	Metal Shoes
51500100	1	Each	Name Plates
542D0220	30	Foot	P Cul Cl D 1 15
67100100	1	L Sum	Mobilization



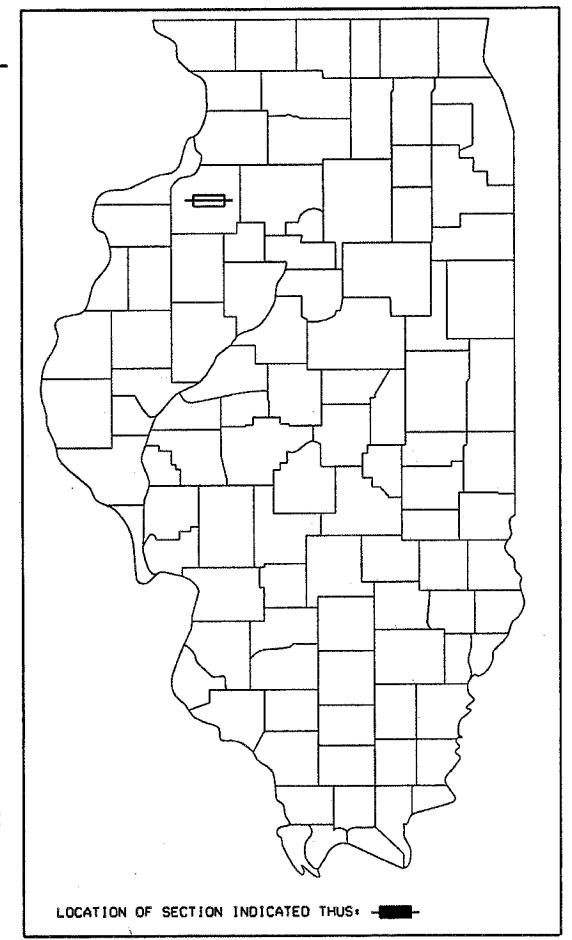
LOCATION MAP

NET LENGTH OF SECTION = 761 FEET = 0.14 MILES

Section 05-09126-00-BR/05-017134-00-BR
Ends at Station 207+61.

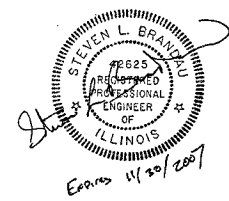
Section includes a three span bridge
(40', 40', 40') with precast prestressed
concrete deck beams (21" deep) on pile
bent concrete abutments. Also included
are aggregate surface approach roadways.

SECTION 05-09126-00-BR/05-17134-00-BR
Begins at Station 200+00.



THESE PLANS WERE PREPARED BY ME OR
BY THE FULL TIME MEMBERS OF MY STAFF.

Steven L. Brandau
STEVEN L. BRANDAU
P.E. 42625



STATE OF ILLINOIS
DEPARTMENT OF TRANSPORTATION
DIVISION OF HIGHWAYS

APPROVED 7/14/06 Steven L. Brandau COUNTY ENGINEER

PASSED August 25 2006 [Signature] DISTRICT ENGINEER OF LOCAL ROADS & STREETS

Releasing for Bid August 25 2006 [Signature] DISTRICT ENGINEER
Based on Limited Review

CALL J.U.L.I.E.
BEFORE YOU DIG
800-892-0123

Design Speed: 30 mph
RURAL LOCAL ROAD (ADT 0-250)