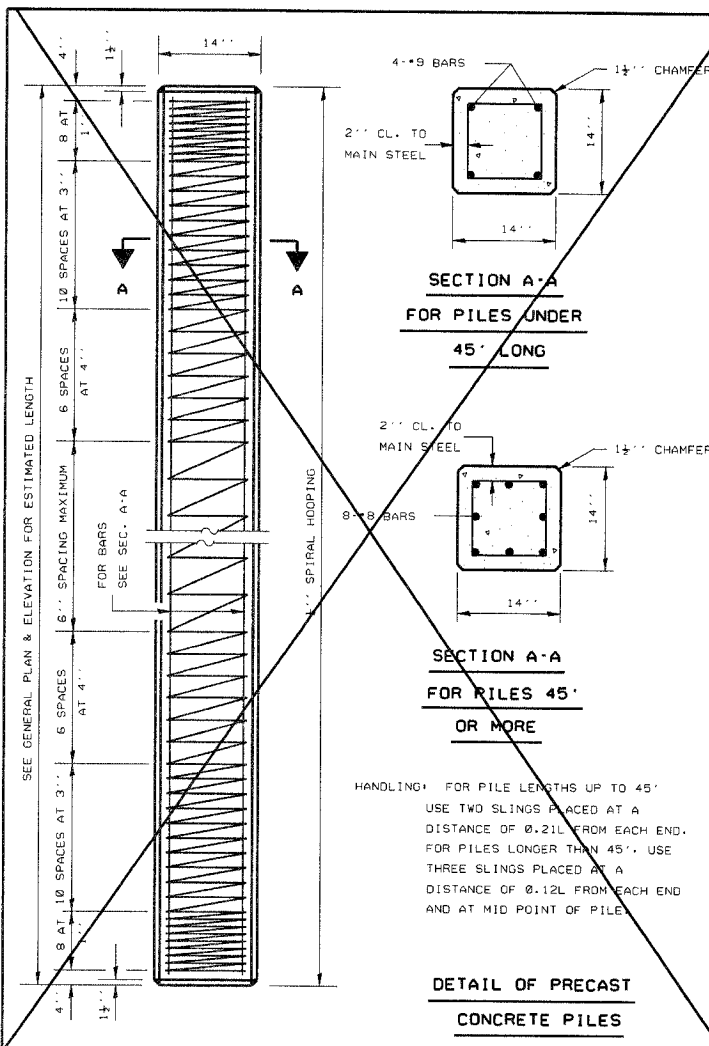


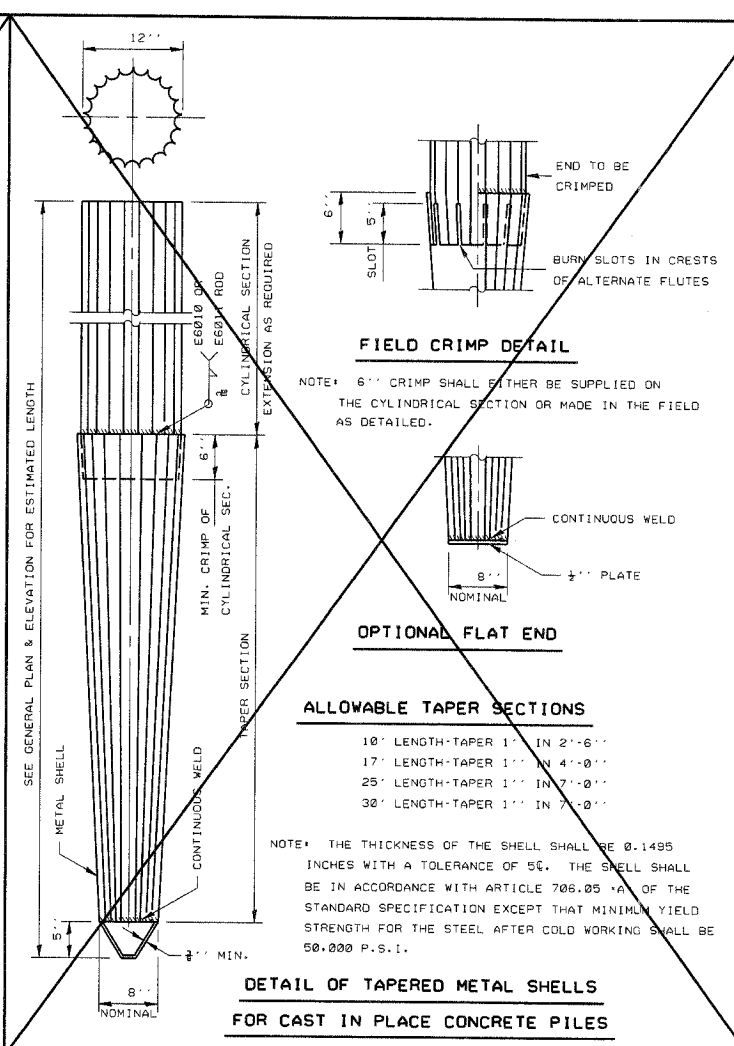
FAS RTE	SECTION	COUNTY	TOTAL SHEETS	SHEET NO.
TR 205	05-09128-00-BR	HENRY	11	11
F.W.A. REG.		ILLINOIS	PROJECT BR05-073153	

REINFORCEMENT CAGE SHALL BE OMITTED WHEN CLASS S1 CONCRETE ENCASEMENT IS PROVIDED.

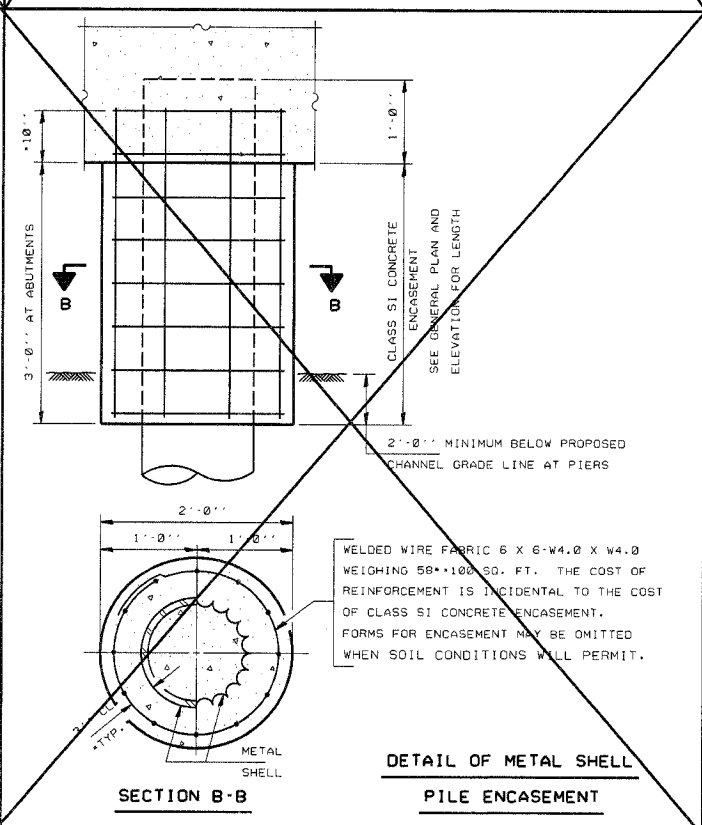
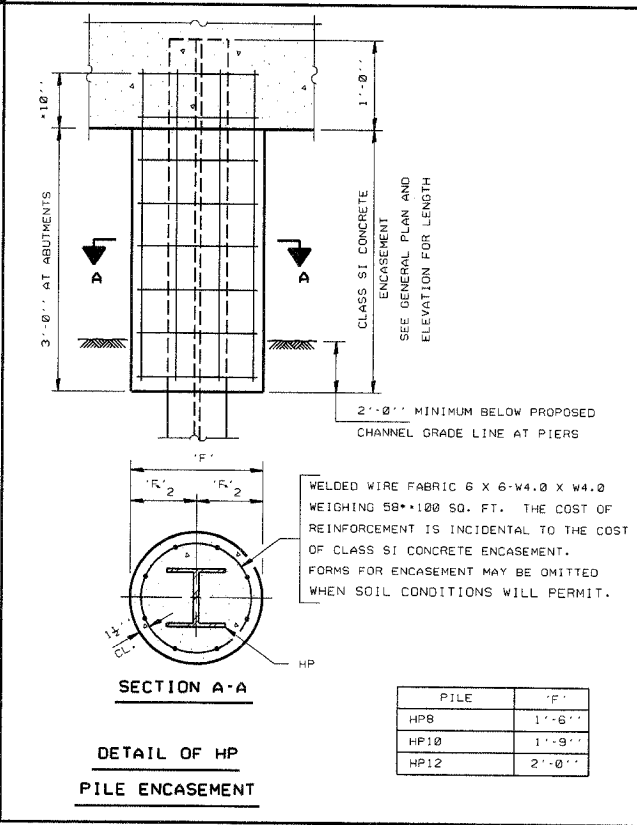
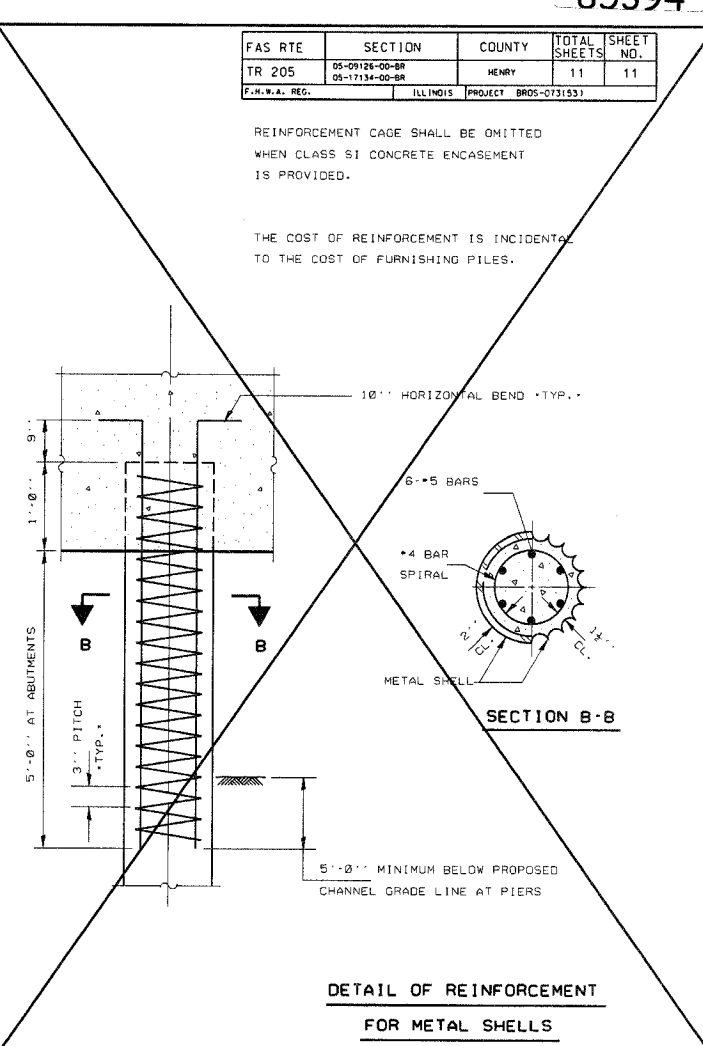
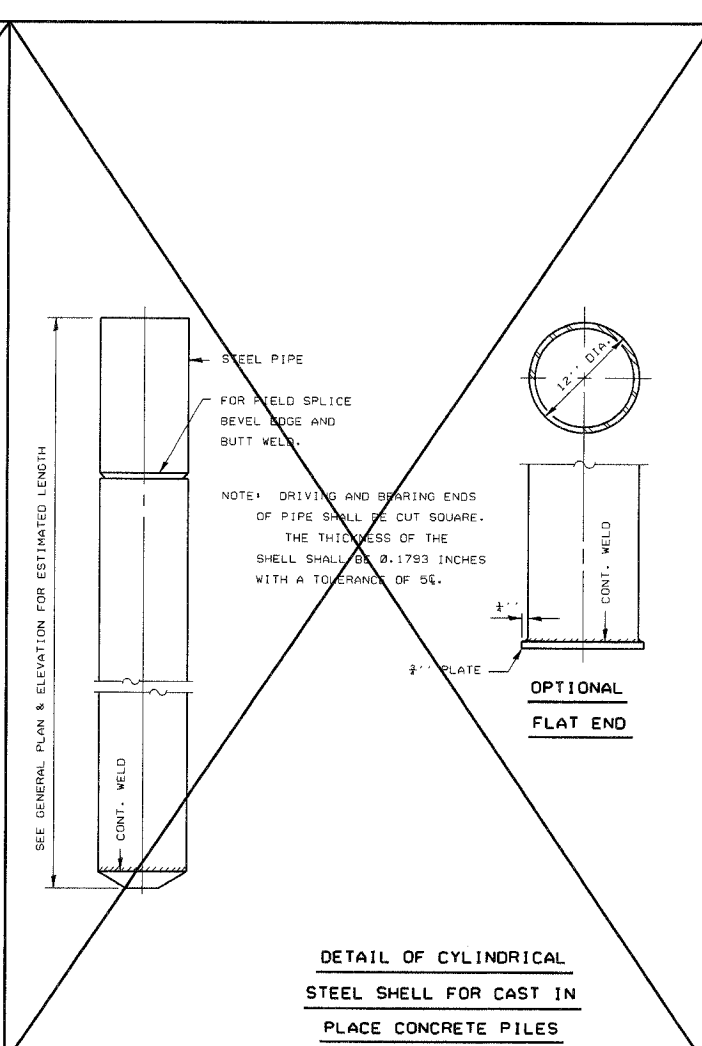
THE COST OF REINFORCEMENT IS INCIDENTAL TO THE COST OF FURNISHING PILES.



HANDLING: FOR PILE LENGTHS UP TO 45' USE TWO SLINGS PLACED AT A DISTANCE OF 0.21L FROM EACH END. FOR PILES LONGER THAN 45' USE THREE SLINGS PLACED AT A DISTANCE OF 0.12L FROM EACH END AND AT MID POINT OF PILE.



NOTE: THE THICKNESS OF THE SHELL SHALL BE 0.1495 INCHES WITH A TOLERANCE OF 5%. THE SHELL SHALL BE IN ACCORDANCE WITH ARTICLE 706.05 (A) OF THE STANDARD SPECIFICATION EXCEPT THAT MINIMUM YIELD STRENGTH FOR THE STEEL AFTER COLD WORKING SHALL BE 50,000 P.S.I.



**QUANTITIES-LIN. FT. OF ENCASEMENT**

\*STEEL PILES\*

PILE SIZE	ITEM	QUANTITY
HP8	CLASS S1 CONCRETE ENCASEMENT	0.063 C.Y.
HP10	CLASS S1 CONCRETE ENCASEMENT	0.086 C.Y.
HP12	CLASS S1 CONCRETE ENCASEMENT	0.112 C.Y.

\*METAL SHELL PILES\*

PILE SIZE	ITEM	QUANTITY
12" DIA.	CLASS S1 CONCRETE ENCASEMENT	0.097 C.Y.

<b>PILE DETAILS</b>
<b>STANDARD CX-1</b>