

| FAS ROUTE NO. | SEC | COUNTY | TOTAL SHEETS | SHEET NO. |
|---------------|-----|--------|--------------|-----------|
| -             | *   | DEKALB | 21           | 5         |

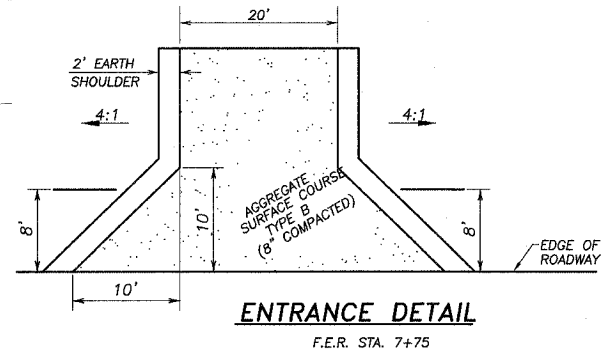
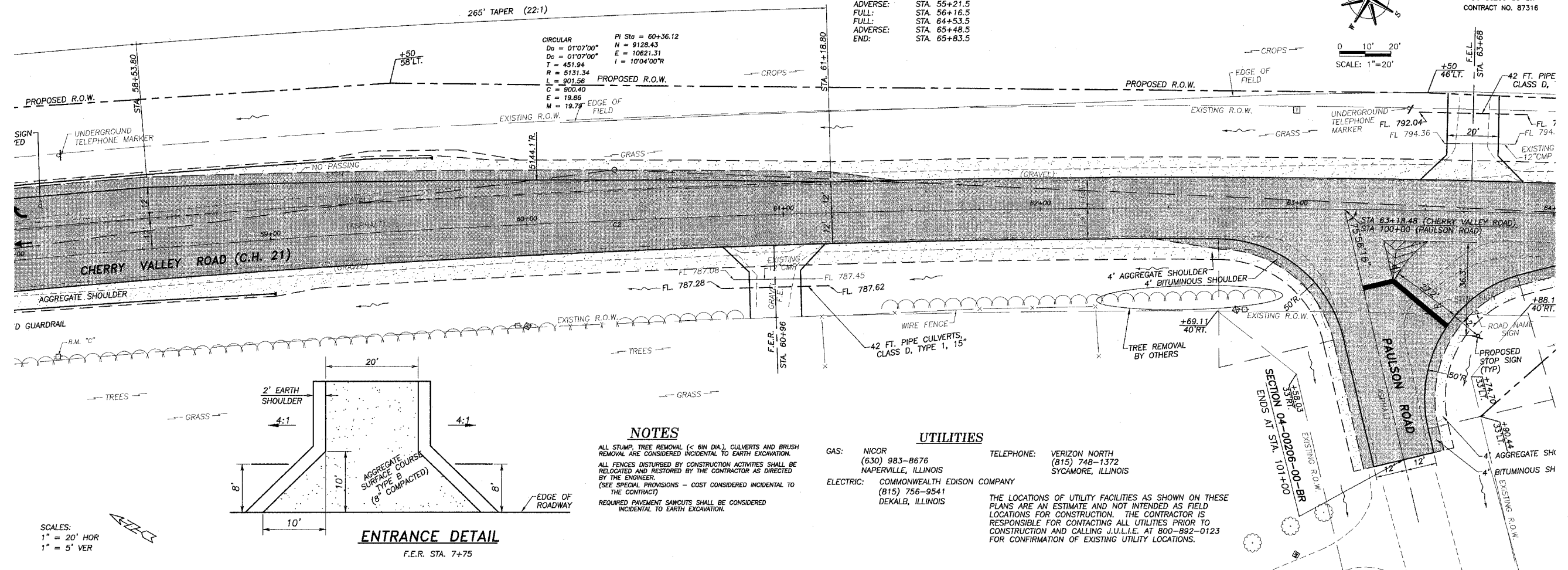
ILLINOIS PROJECT BRS-1122(107)  
 \* 04-00206-00-BR  
 CONTRACT NO. 87316

**SUPER ELEVATION DATA**  
 MSE: 3%  
 START: STA. 54+86.5  
 ADVERSE: STA. 55+21.5  
 FULL: STA. 56+16.5  
 FULL: STA. 64+53.5  
 ADVERSE: STA. 65+48.5  
 END: STA. 65+83.5



SCALE: 1" = 20'

**CIRCULAR** PI Sta = 60+36.12  
 Do = 01'07"00" N = 9128.43  
 Dc = 01'07"00" E = 10621.31  
 T = 451.94 I = 10'04"00"R  
 L = 901.56  
 C = 900.40  
 E = 19.85  
 M = 18.7'

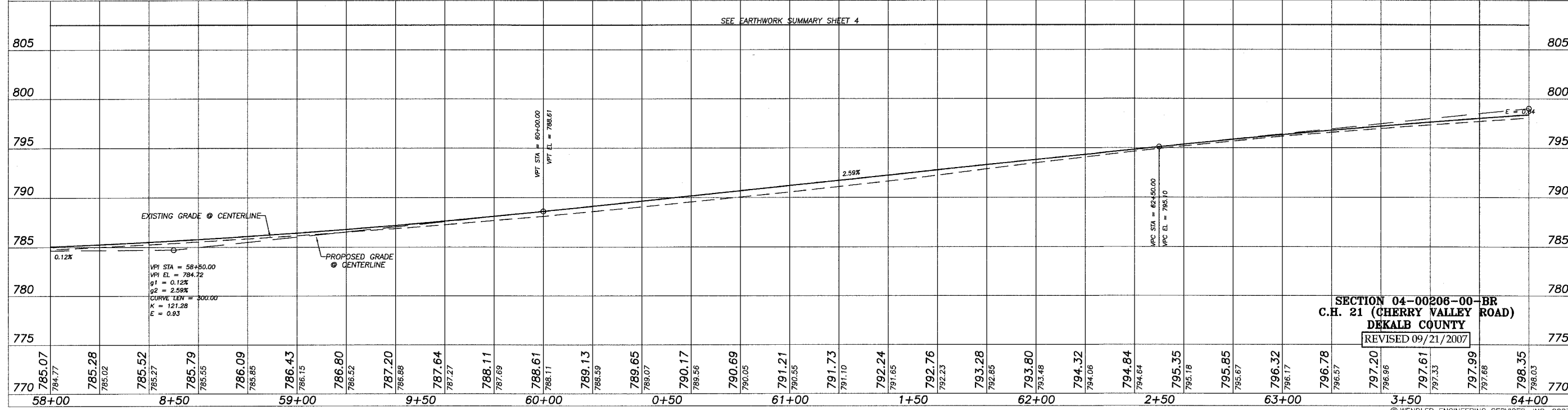


**NOTES**  
 ALL STUMP, TREE REMOVAL (< 6IN DIA.), CULVERTS AND BRUSH REMOVAL ARE CONSIDERED INCIDENTAL TO EARTH EXCAVATION.  
 ALL FENCES DISTURBED BY CONSTRUCTION ACTIVITIES SHALL BE RELOCATED AND RESTORED BY THE CONTRACTOR AS DIRECTED BY THE ENGINEER.  
 (SEE SPECIAL PROVISIONS - COST CONSIDERED INCIDENTAL TO THE CONTRACT)  
 REQUIRED PAVEMENT SAWCUTS SHALL BE CONSIDERED INCIDENTAL TO EARTH EXCAVATION.

**UTILITIES**  
 GAS: NICOR (630) 983-8676 NAPERVILLE, ILLINOIS  
 ELECTRIC: COMMONWEALTH EDISON COMPANY (815) 756-9541 DEKALB, ILLINOIS  
 TELEPHONE: VERIZON NORTH (815) 748-1372 SYCAMORE, ILLINOIS

THE LOCATIONS OF UTILITY FACILITIES AS SHOWN ON THESE PLANS ARE AN ESTIMATE AND NOT INTENDED AS FIELD LOCATIONS FOR CONSTRUCTION. THE CONTRACTOR IS RESPONSIBLE FOR CONTACTING ALL UTILITIES PRIOR TO CONSTRUCTION AND CALLING J.U.L.I.E. AT 800-892-0123 FOR CONFIRMATION OF EXISTING UTILITY LOCATIONS.

SCALES:  
 1" = 20' HOR  
 1" = 5' VER



SECTION 04-00206-00-BR  
 C.H. 21 (CHERRY VALLEY ROAD)  
 DEKALB COUNTY  
 REVISED 09/21/2007

WENDLER ENGINEERING SERVICES, INC.  
 Structural & Civil Engineers-Land Surveying-Environmental Services  
 Illinois Professional Design Firm No. 184-000848

1968 - 2007  
 AFTER  
**39**  
 YEARS.  
 WE'RE STILL  
 "Turning Lines...  
 ...Into Reality!"

888 TIMBER CREEK ROAD - P.O. BOX 486 - DIXON, IL 61021 - 815-288-2261  
 28 E. MARION - SUITE 3 - PRINCETON, IL 61356 - 815-879-4731  
 1778 WEST STATE ST. - SYCAMORE, IL 60178 - 815-885-5008  
 804 FREEPORT RD. - STERLING, IL 61081 - (815) 626-4428  
 E-MAIL: info@wendlerengineering.com