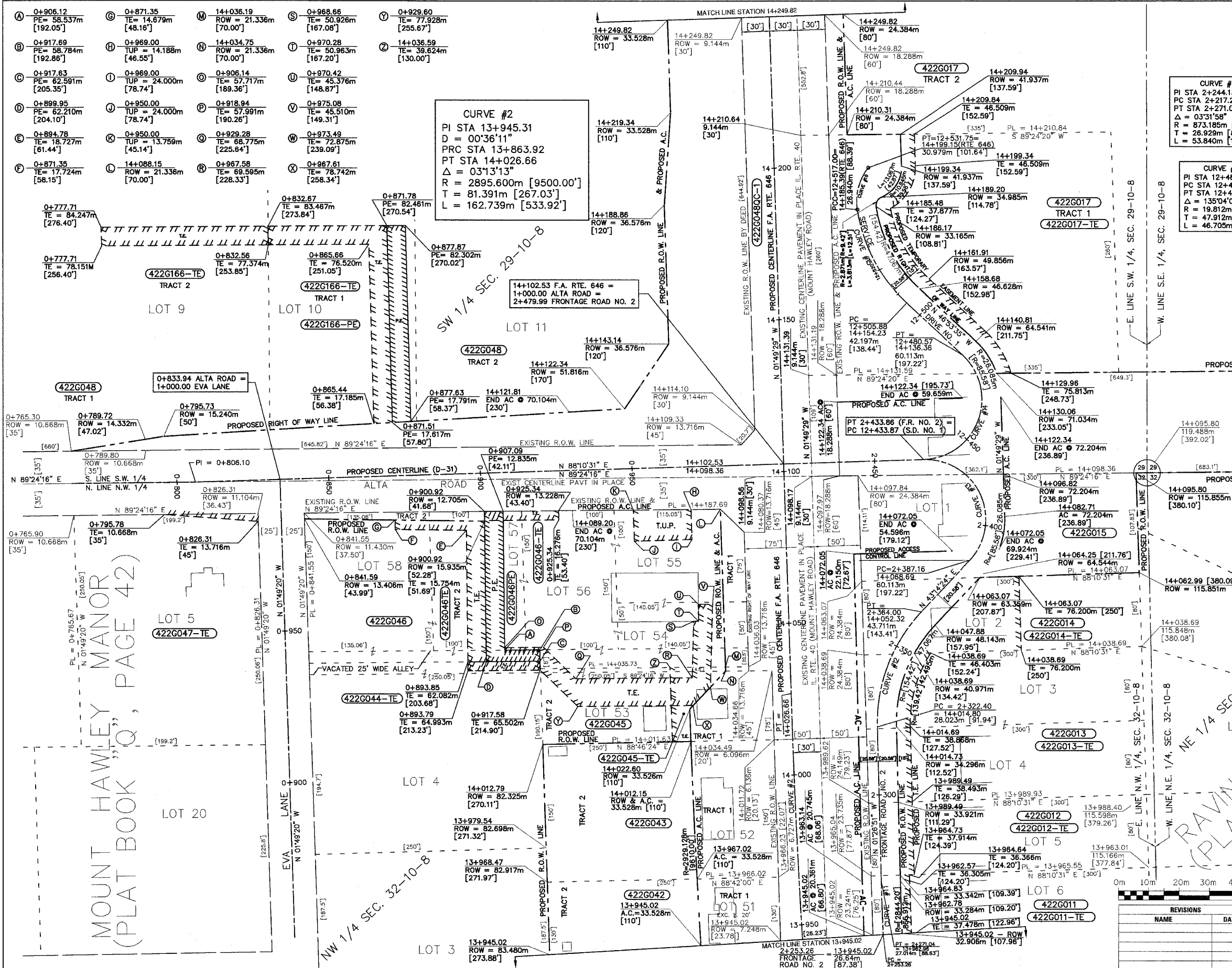


ILLINOIS DEPARTMENT OF TRANSPORTATION

RTE NO.	SECTION	COUNTY	TOTAL	SHEET #
FA 646	(Y)W-1, RS-3	PEORIA	142	35

STATION 13+945.02 TO STATION 14+249.82
T-10-N, R-8-E, 4th. P.M.
PEORIA COUNTY, ILLINOIS

CURVE #11	CURVE #12	CURVE #13
PI STA 2+244.13 PC STA 2+217.20 PT STA 2+271.04 Δ = 03°31'58" R = 873.185m [2864.78'] T = 26.929m [88.35'] L = 53.840m [176.64']	PI STA 2+344.32 PC STA 2+322.39 PT STA 2+364.00 Δ = 44°41'15" R = 53.340m [175.00'] T = 21.924m [71.93'] L = 41.602m [136.49']	PI STA 2+435.07 PC STA 2+387.16 PT STA 2+433.86 Δ = 135°03'53" R = 19.812m [65.00'] T = 47.905m [157.17'] L = 46.705m [153.23']
CURVE #14	CURVE #15	CURVE #16
PI STA 12+481.78 PC STA 12+433.87 PT STA 12+480.57 Δ = 135°04'05" R = 19.812m [65.00'] T = 47.912m [157.19'] L = 46.705m [153.23']	PI STA 12+511.46 PC STA 12+505.88 PT STA 12+517.00 Δ = 11°56'56" R = 53.340m [175.00'] T = 18.344m [60.18'] L = 35.337m [115.93']	PI STA 12+524.82 PC STA 12+517.00 PT STA 12+531.75 Δ = 46°56'40" R = 18.000m [59.06'] T = 7.816m [25.64'] L = 14.748m [48.38']



MOUNT HAWLEY MANOR (PLAT BOOK "Q", PAGE 42)

RAVINGWOODS "Q" (PLAT BOOK "Q", PAGE 79)

REVISIONS	
NAME	DATE

ILLINOIS DEPARTMENT OF TRANSPORTATION
EXISTING & PROPOSED R.O.W. & T.E. STRIP MAP
 STA. 13+945.02 TO STA. 14+249.82
 SCALE: 1:800
 DATE: 09/01/06
 DRAWN BY: JDU
 CHECKED BY: ECM