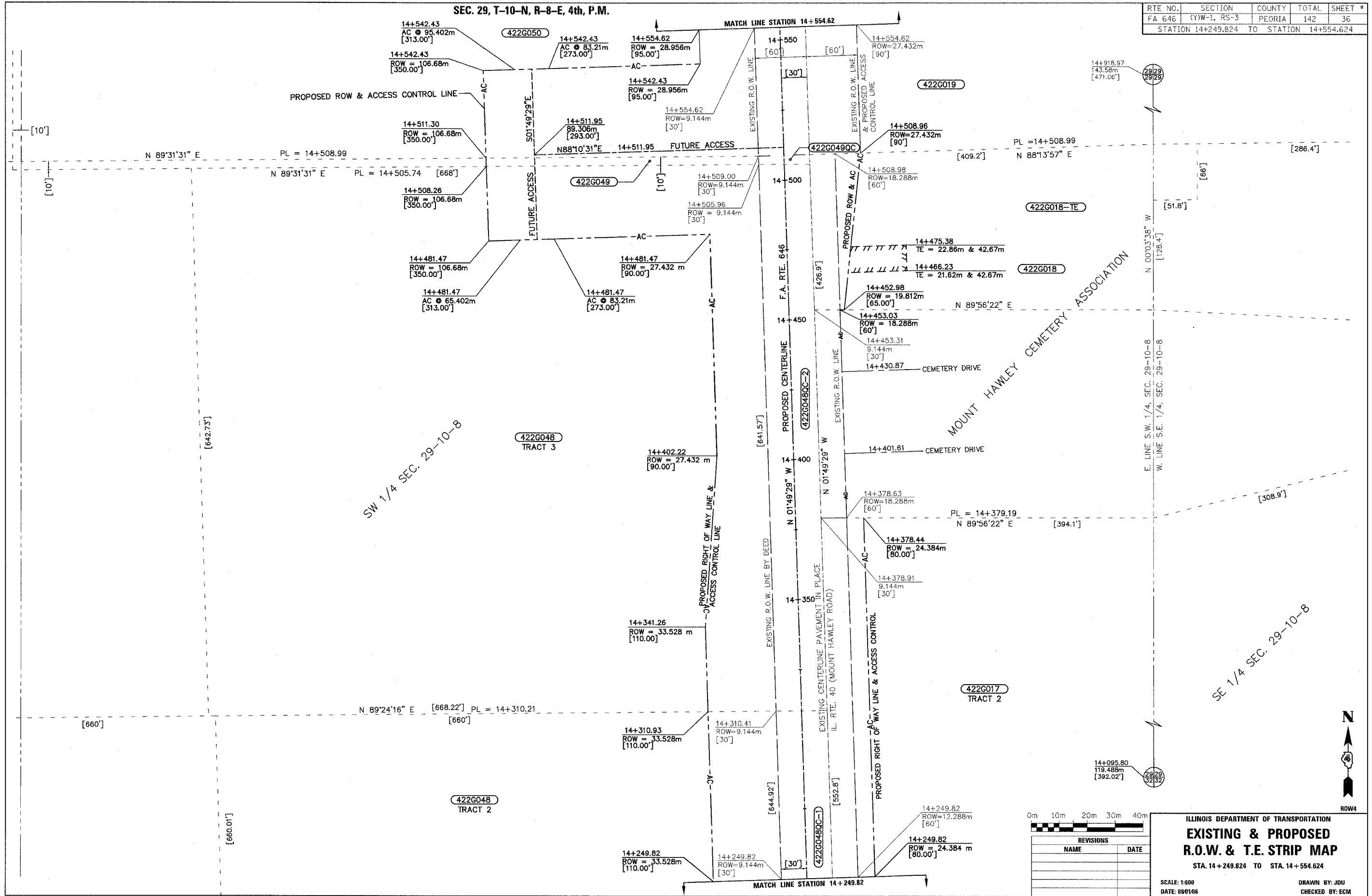


ILLINOIS DEPARTMENT OF TRANSPORTATION

SEC. 29, T-10-N, R-8-E, 4th, P.M.

RTE NO.	SECTION	COUNTY	TOTAL	SHEET #
FA 646	(Y)W-1, RS-3	PEORIA	142	36
STATION 14+249.824 TO STATION 14+554.624				



REVISIONS	
NAME	DATE

ILLINOIS DEPARTMENT OF TRANSPORTATION
**EXISTING & PROPOSED
 R.O.W. & T.E. STRIP MAP**
 STA. 14+249.824 TO STA. 14+554.624
 SCALE: 1:600
 DATE: 09/01/06
 DRAWN BY: JOU
 CHECKED BY: ECM