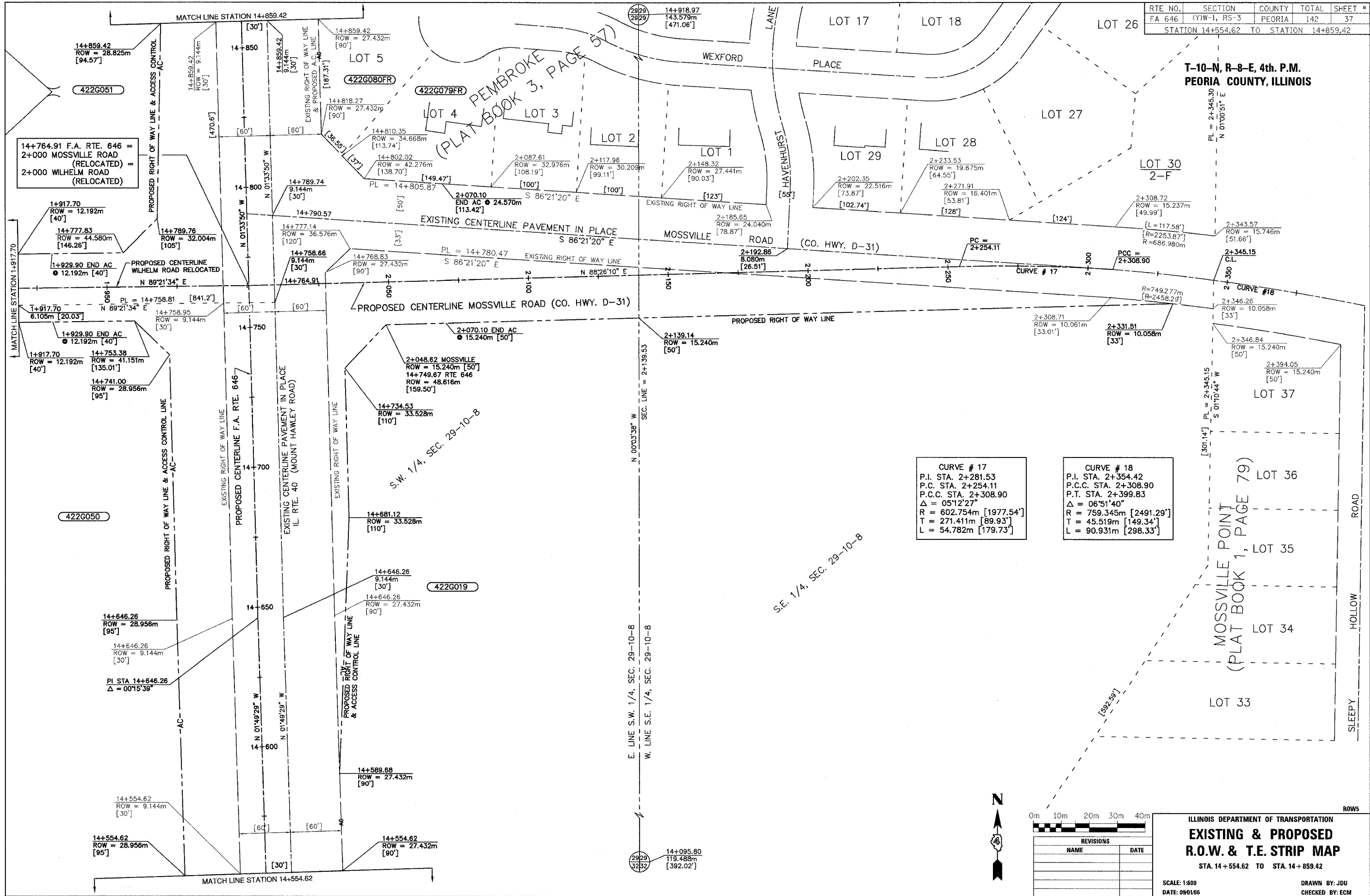


ILLINOIS DEPARTMENT OF TRANSPORTATION

RTE NO.	SECTION	COUNTY	TOTAL	SHEET #
FA 646	(Y)W-1, RS-3	PEORIA	142	37
STATION 14+554.62 TO STATION 14+859.42				

T-10-N, R-8-E, 4th. P.M.
PEORIA COUNTY, ILLINOIS



CURVE # 17
 P.I. STA. 2+281.53
 P.C. STA. 2+254.11
 P.C.C. STA. 2+308.90
 $\Delta = 05^{\circ}12'27''$
 $R = 602.754m [1977.54']$
 $T = 271.411m [89.93']$
 $L = 54.782m [179.73']$

CURVE # 18
 P.I. STA. 2+354.42
 P.C.C. STA. 2+308.90
 P.T. STA. 2+399.83
 $\Delta = 06^{\circ}51'40''$
 $R = 759.345m [2491.29']$
 $T = 45.519m [149.34']$
 $L = 90.931m [298.33']$

0m	10m	20m	30m	40m
REVISIONS				
NAME	DATE			

ILLINOIS DEPARTMENT OF TRANSPORTATION
**EXISTING & PROPOSED
 R.O.W. & T.E. STRIP MAP**
 STA. 14+554.62 TO STA. 14+859.42

SCALE: 1:800
 DATE: 09/1/06

DRAWN BY: JDU
 CHECKED BY: ECM