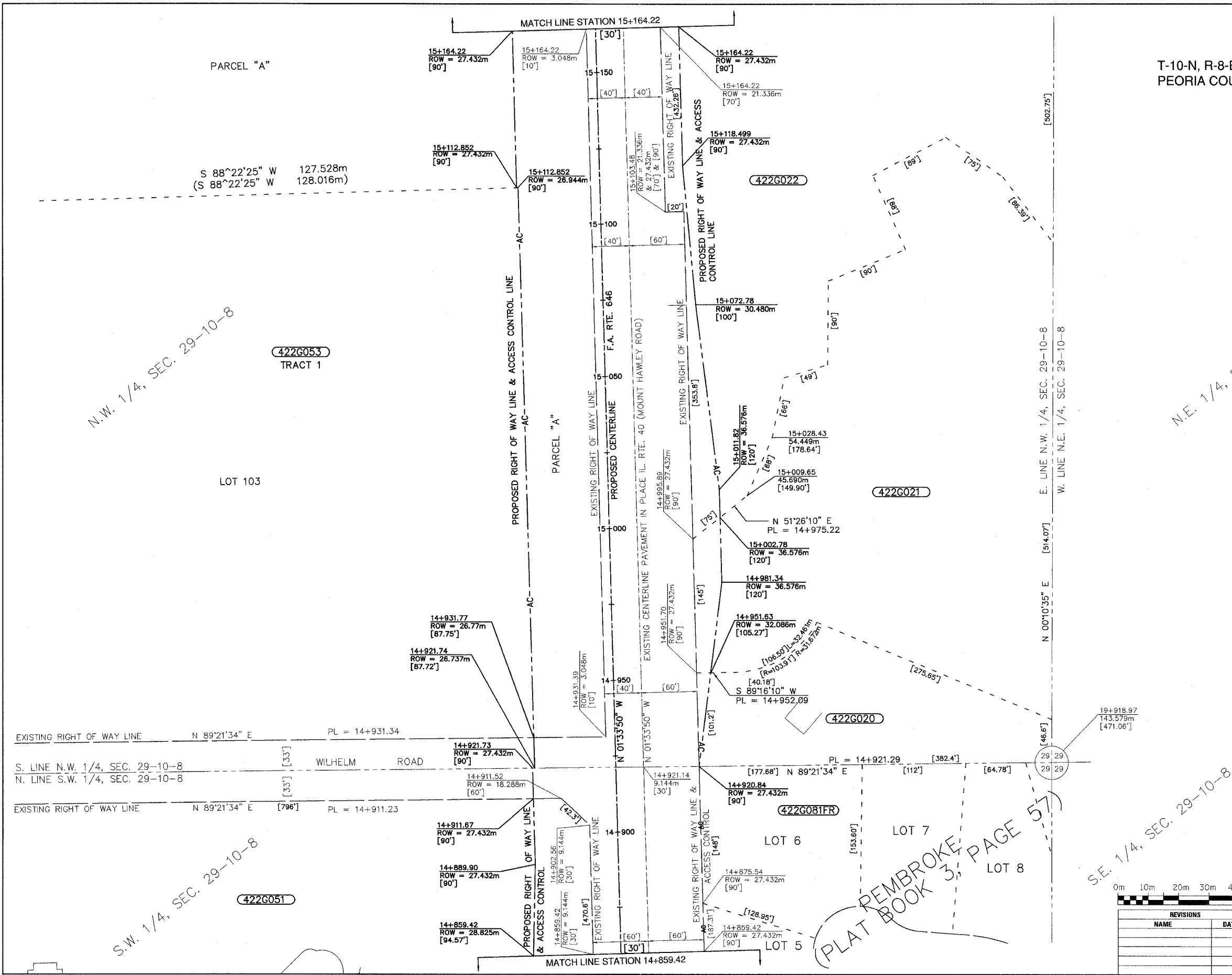


ILLINOIS DEPARTMENT OF TRANSPORTATION

RTE NO.	SECTION	COUNTY	TOTAL	SHEET #
FA 646	(Y)W-1, RS-3	PEORIA	142	39
STATION 14+859.42 TO STATION 15+164.22				

T-10-N, R-8-E, 4th. P.M.
PEORIA COUNTY, ILLINOIS



N.W. 1/4, SEC. 29-10-8

N.E. 1/4, SEC. 29-10-8

S.W. 1/4, SEC. 29-10-8

S.E. 1/4, SEC. 29-10-8

REMBROKE PLAT BOOK 3, PAGE 57



REVISIONS	
NAME	DATE

ILLINOIS DEPARTMENT OF TRANSPORTATION
EXISTING & PROPOSED R.O.W. & T.E. STRIP MAP
STA. 14+859.42 TO STA. 15+164.22

SCALE: 1:600
DATE: 09/01/06

DRAWN BY: JDU
CHECKED BY: ECM