

SEC. 32, T.10N., R.8E., 4th P.M.

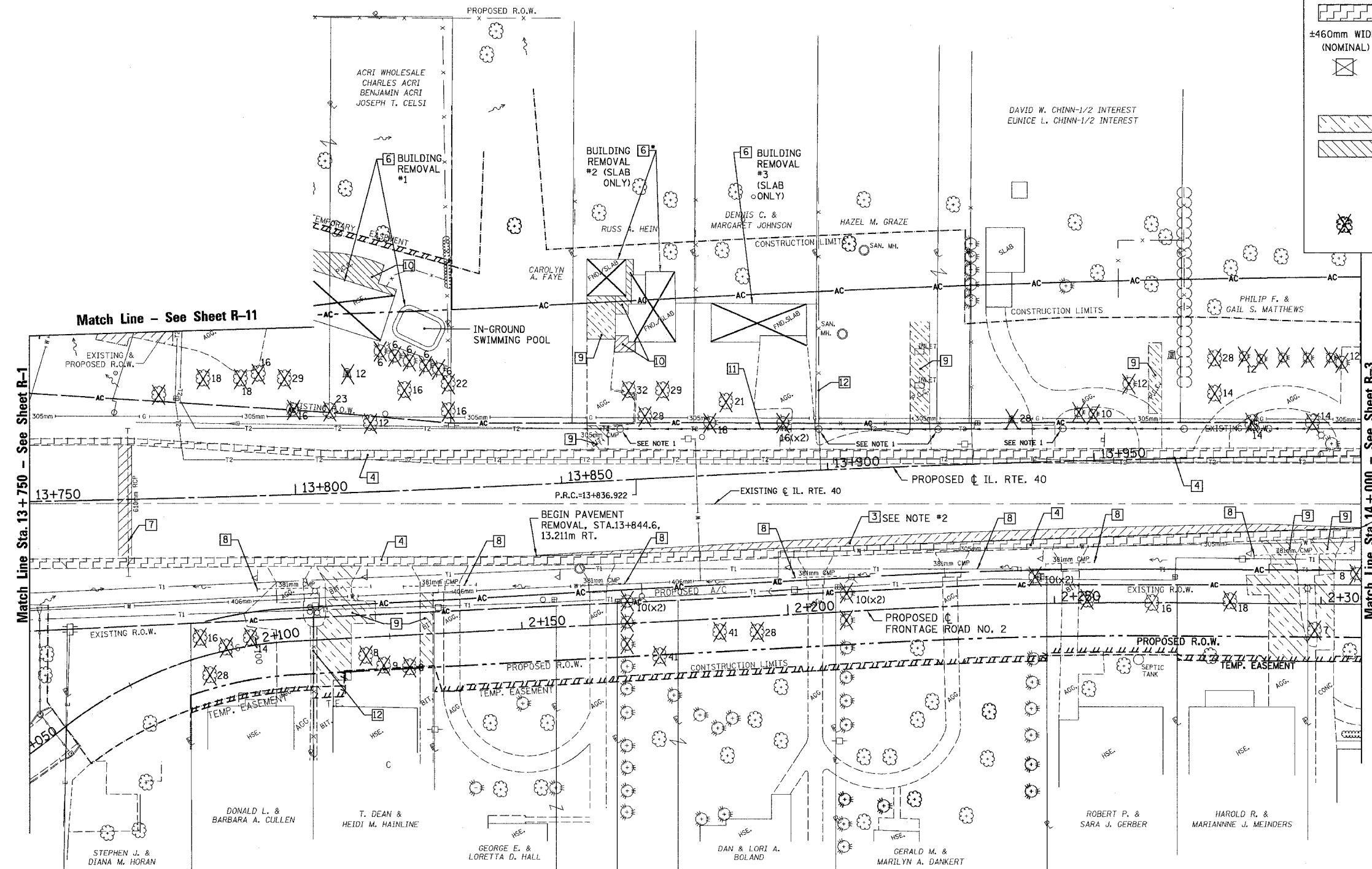
RTE NO.	SECTION	COUNTY	TOTAL	SHEET #
FA 646	(Y)W-1, RS-3	PEORIA	142	51
STATION 13+750 TO STATION 14+000				

REMOVAL LEGEND

	1 CURB & GUTTER REMOVAL
	2 N/A
	3 PAVEMENT REMOVAL
	4 PAVED SHOULDER REMOVAL (m ²)
	±460mm WIDE (NOMINAL) 5 BIT. SHOULDER REMOVAL (meter)
	6 BUILDING REMOVAL
	7 REMOVE EXISTING CULVERTS (meter)
	8 PIPE CULVERT REMOVAL (EACH)
	9 DRIVEWAY PAVEMENT REMOVAL
	10 SIDEWALK REMOVAL
	11 STORM SEWER REMOVAL
	12 FENCE REMOVAL
	INDIVIDUAL TREE REMOVAL (UNITS)

NOTE 1: EXISTING INLETS ARE 381 mm TEE'S WITH GRATES. REMOVAL SHALL BE INCLUDED IN STORM SEWER REMOVAL.

NOTE 2: REMOVE EXISTING PAVEMENT FROM EDGE OF PROPOSED SHOULDER AS DEFINED ON THE PLAN AND PROFILE SHEET.

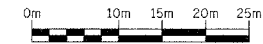


Match Line - See Sheet R-11

Match Line Sta. 13+750 - See Sheet R-1

Match Line Sta. 14+000 - See Sheet R-3

END PAVEMENT REMOVAL, STA.14+000, 13.447m RT.



REVISIONS	
NAME	DATE

ILLINOIS DEPARTMENT OF TRANSPORTATION

EXISTING /REMOVAL

ILLINOIS ROUTE 40

STA. 13+750 TO STA. 14+000

SCALE: 1:400

DATE: 09/01/06

DRAWN BY: JDU

CHECKED BY: ECM

R-2