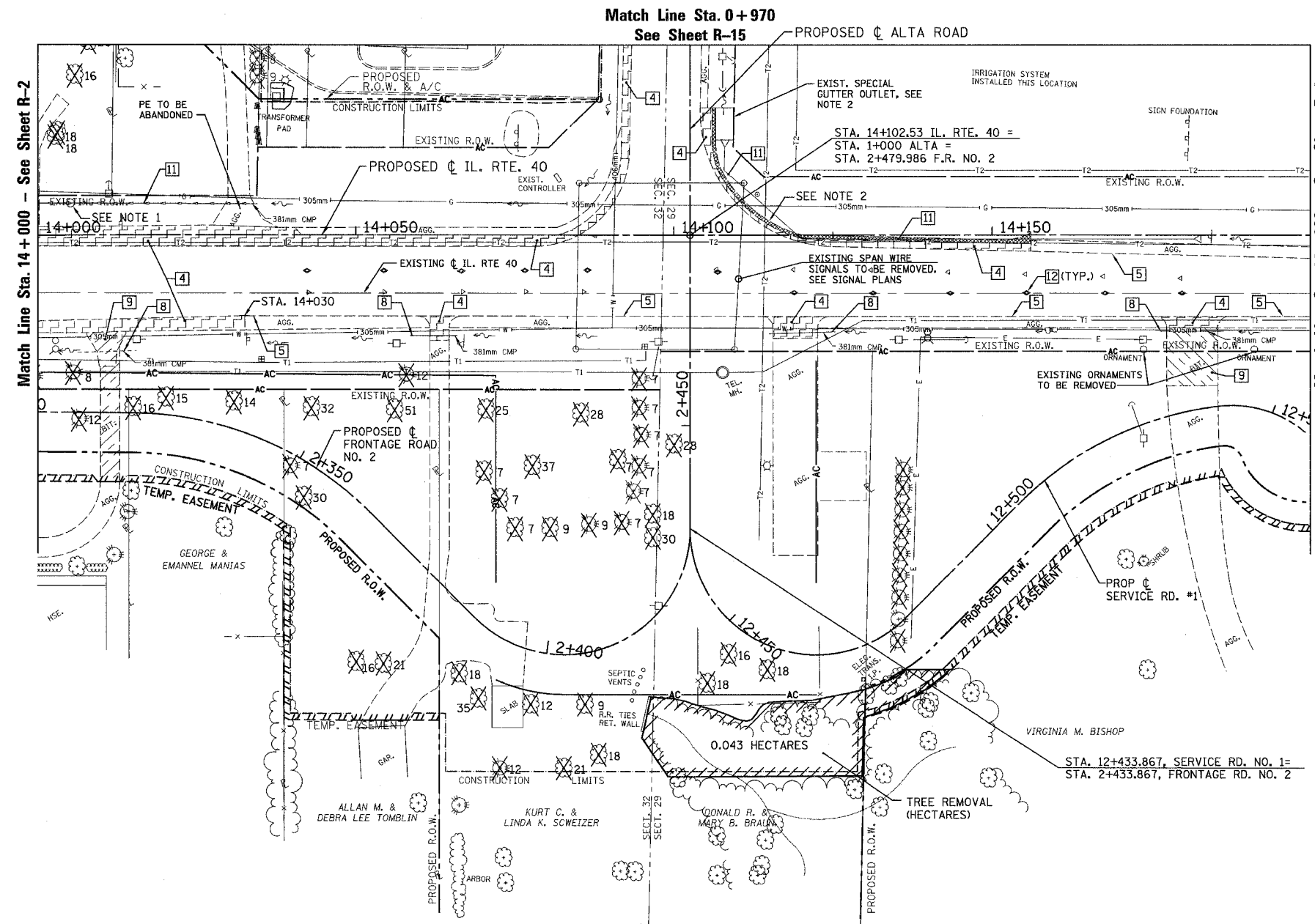


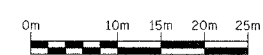
RTE NO.	SECTION	COUNTY	TOTAL	SHEET #
FA 646	(Y)W-1, RS-3	PEORIA	142	52
STATION 14+000 TO STATION 14+200				

REMOVAL LEGEND

	1 CURB & GUTTER REMOVAL
	2 N/A
	3 PAVEMENT REMOVAL
	4 PAVED SHOULDER REMOVAL (m ²)
	5 ±460mm WIDE (NOMINAL) BIT. SHOULDER REMOVAL (meter)
	6 BUILDING REMOVAL
	7 REMOVE EXISTING CULVERTS (meter)
	8 PIPE CULVERT REMOVAL (EACH)
	9 DRIVEWAY PAVEMENT REMOVAL
	10 SIDEWALK REMOVAL
	11 STORM SEWER REMOVAL
	12 RAISED REFLECTIVE PAVEMENT MARKER REMOVAL
	INDIVIDUAL TREE REMOVAL (UNITS)



- NOTES:
- EXISTING INLETS ARE 381mm TEE'S WITH GRATES. REMOVAL SHALL BE INCLUDED IN STORM SEWER REMOVAL.
 - GUTTER REMOVAL (INCLUDING SPECIAL OUTLET) LT. STA. 14+106 TO STA. 14+153 - 59 m TOTAL.
 - EXISTING ORNAMENT REMOVAL SHALL BE INCIDENTAL TO EARTH EXCAVATION.



REVISIONS	
NAME	DATE

ILLINOIS DEPARTMENT OF TRANSPORTATION

EXISTING /REMOVAL

ILLINOIS ROUTE 40

STA. 14+000 TO STA. 14+200

SCALE: 1:400

DATE: 09/01/06

DRAWN BY: JDU

CHECKED BY: ECM