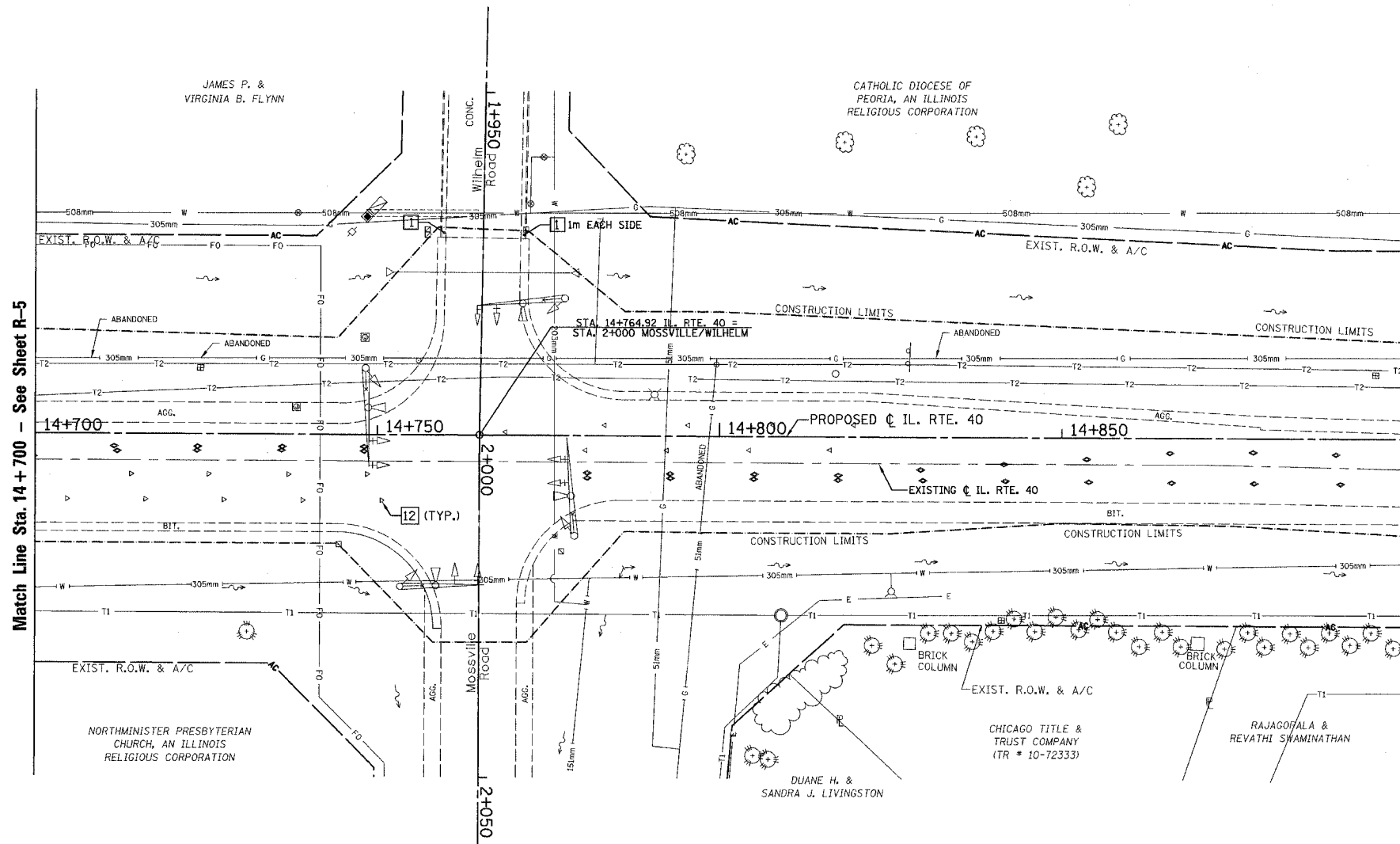


SEC. 29, T.10N., R.8E., 4th P.M.

RTE NO.	SECTION	COUNTY	TOTAL	SHEET #
FA 646	(Y)W-L, RS-3	PEORIA	142	55
STATION 14+700 TO STATION 14+900				

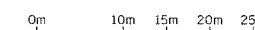
REMOVAL LEGEND

	1 CURB & GUTTER REMOVAL
	2 N/A
	3 PAVEMENT REMOVAL
	4 PAVED SHOULDER REMOVAL (m ²)
	5 BIT. SHOULDER REMOVAL (meter)
	6 BUILDING REMOVAL
	7 REMOVE EXISTING CULVERTS (meter)
	8 PIPE CULVERT REMOVAL (EACH)
	9 DRIVEWAY PAVEMENT REMOVAL
	10 SIDEWALK REMOVAL
	11 STORM SEWER REMOVAL
	12 RAISED REFLECTIVE PAVEMENT MARKER REMOVAL
	INDIVIDUAL TREE REMOVAL (UNITS)



Match Line Sta. 14+700 - See Sheet R-5

Match Line Sta. 14+900 - See Sheet R-7



REVISIONS	
NAME	DATE

ILLINOIS DEPARTMENT OF TRANSPORTATION
EXISTING /REMOVAL
ILLINOIS ROUTE 40
 STA. 14+700 TO STA. 14+900

SCALE: 1:400
 DATE: 09/1/06

DRAWN BY: JDU
 CHECKED BY: ECM

R-6