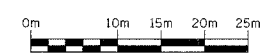
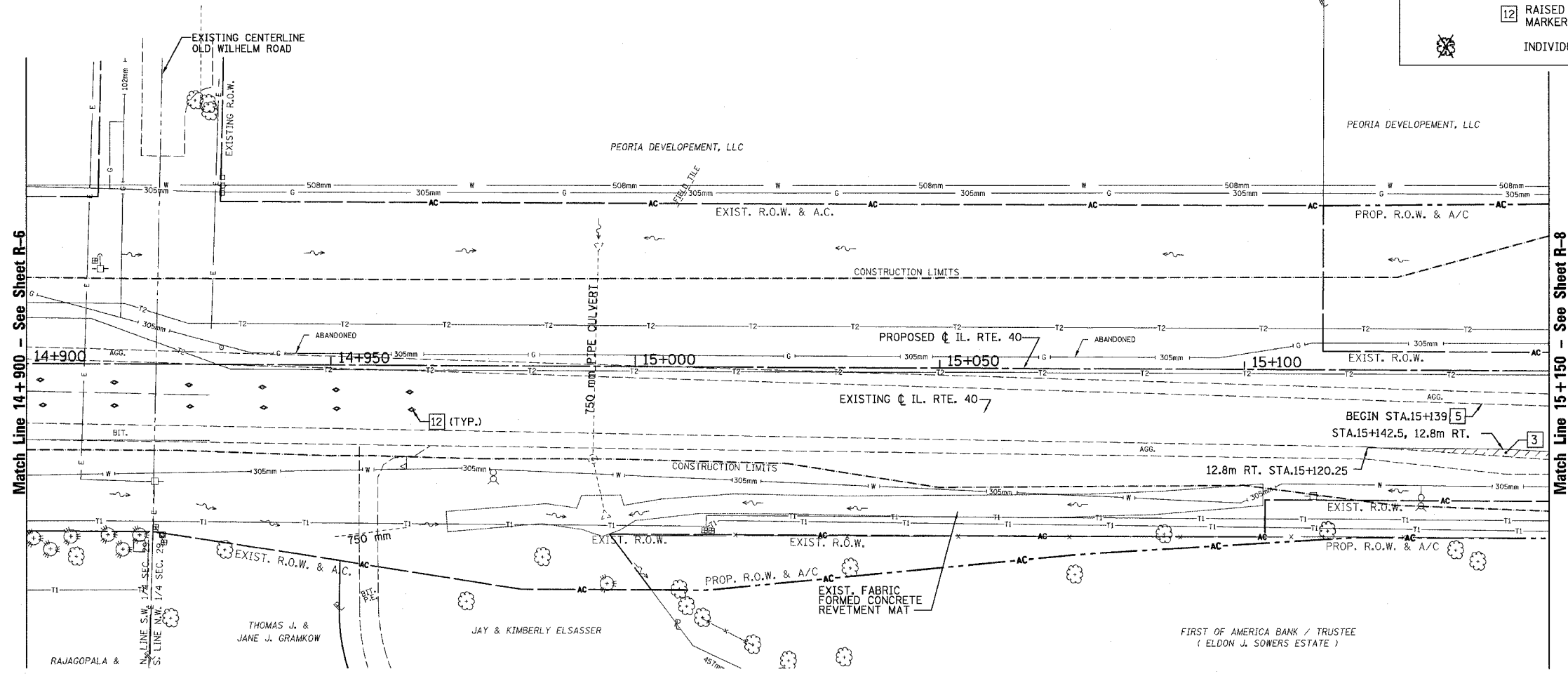


SEC. 29, T.10N., R.8E., 4th P.M.

RTE NO.	SECTION	COUNTY	TOTAL	SHEET #
FA 646	(Y)W-1, RS-3	PEORIA	142	56
STATION 14+900 TO STATION 15+150				

REMOVAL LEGEND

	1 CURB & GUTTER REMOVAL
	2 N/A
	3 PAVEMENT REMOVAL
	4 PAVED SHOULDER REMOVAL (m <sup>2</sup> )
	±460mm WIDE (NOMINAL) 5 BIT. SHOULDER REMOVAL (meter)
	6 BUILDING REMOVAL
	7 REMOVE EXISTING CULVERTS (meter)
	8 PIPE CULVERT REMOVAL (EACH)
	9 DRIVEWAY PAVEMENT REMOVAL
	10 SIDEWALK REMOVAL
	11 STORM SEWER REMOVAL
	12 RAISED REFLECTIVE PAVEMENT MARKER REMOVAL
	INDIVIDUAL TREE REMOVAL (UNITS)



REVISIONS	
NAME	DATE

ILLINOIS DEPARTMENT OF TRANSPORTATION

**EXISTING /REMOVAL**

**ILLINOIS ROUTE 40**

STA. 14+900 TO STA. 15+150

SCALE: 1:400  
DATE: 09/01/06

DRAWN BY: JDU  
CHECKED BY: ECM

R-7