

SEC.32, T.10N., R.8E., 4th P.M.

RTE NO.	SECTION	COUNTY	TOTAL	SHEET #
FA 646	(Y)W-1, RS-3	PEORIA	142	62
STATION 13+600 TO STATION 13+750				

B.M. "M29B-1" - BRASS DISC IN CONCRETE  
 STA. 14+100±, 16m± RT.  
 ELEV.= 243.566

T.B.M. "26" - N'LY CAP BOLT FIRE HYD.  
 STA. 13+716±, 23m± RT.  
 ELEV.= 242.633

T.B.M. "27" - CHIS "X" IN NW ANCHOR BOLT FOR  
 E. LEG OF INFO. SIGN STRADDLING  
 SOUTH BOUND LANES OF 40  
 STA. 13+208±, 30m± RT.  
 ELEV.= 243.530

IL. RTE 40  
 CENTERLINE CURVE DATA  
 CURVE #1  
 PI STA 13+782.576  
 PC STA 13+701.185  
 PRC STA 13+863.924  
 $\Delta = 03^{\circ}13'13"$  (L.T.)  
 R = 2895.600m  
 T = 81.391m  
 L = 162.739m  
 e = N/A

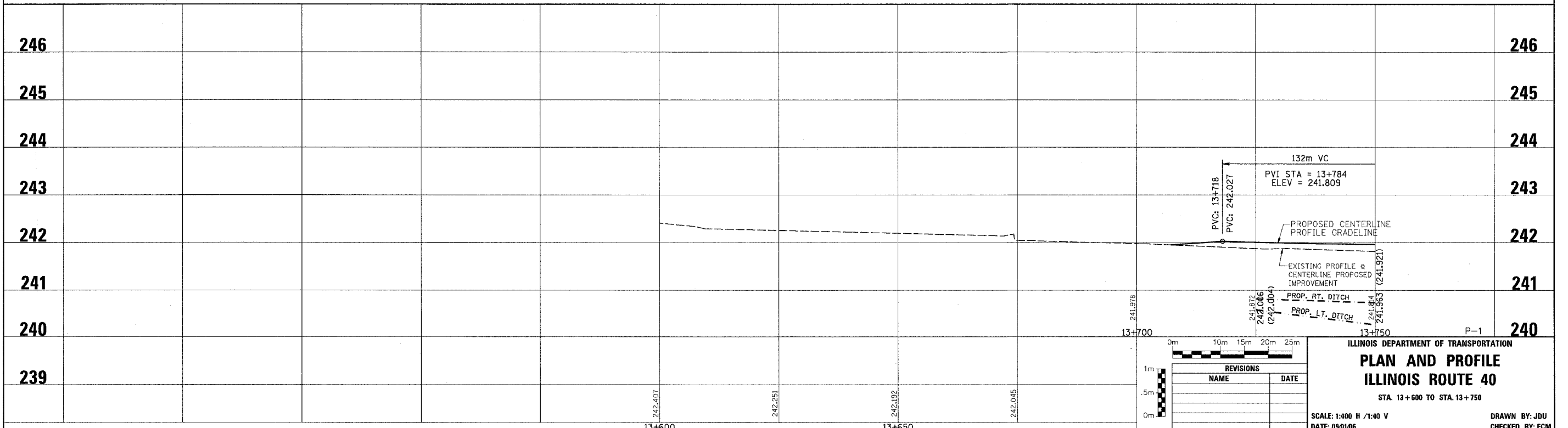
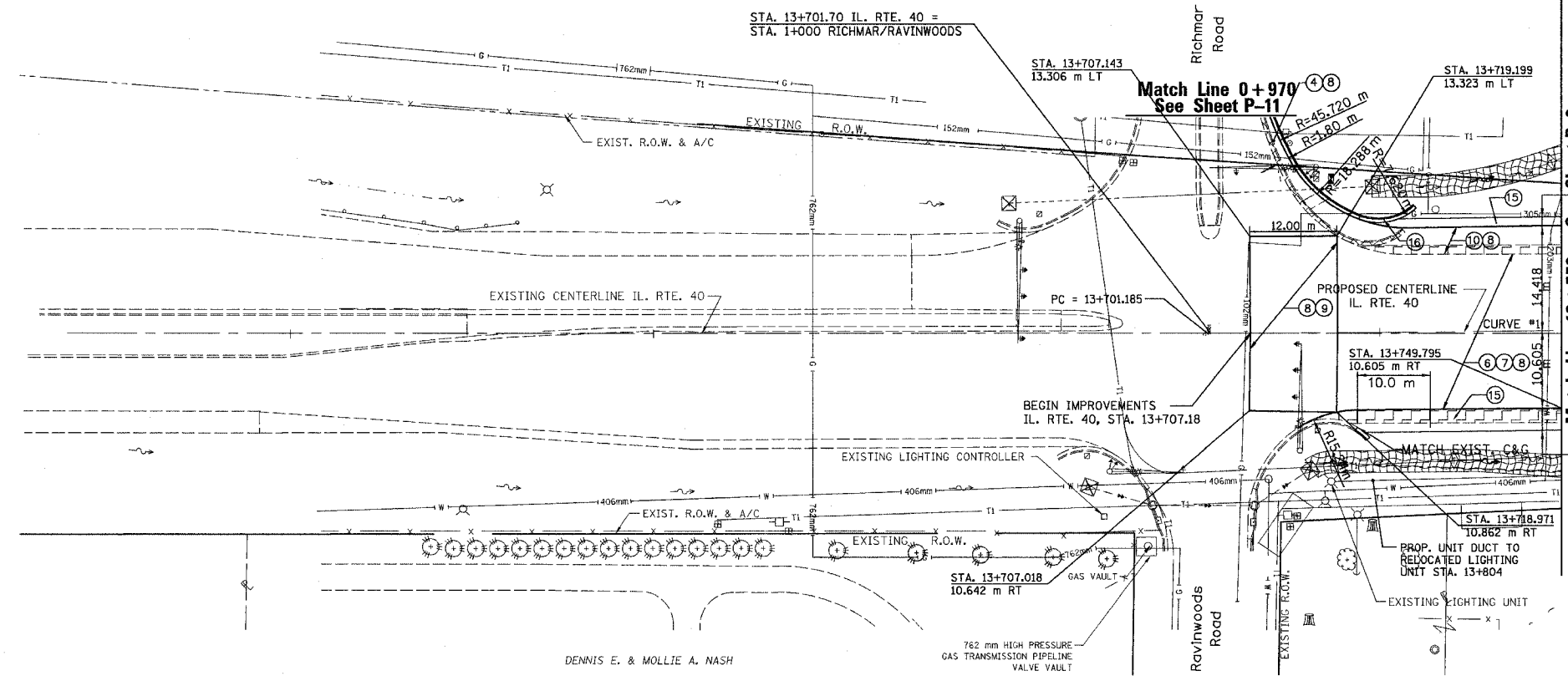
UNIT DUCT, 2 #6 XLP, 1 #6 BARE GROUND, 25mm POLYETHYLENE  
 EXIST. LIGHTING UNIT @ RT. 13+719 TO 13+750..... 31.0 m  
 TRENCH AND BACFILL FOR ELECTRICAL WORK..... 31.0 m

LEGEND - EROSION CONTROL

- INLET & PIPE PROTECTION
- TEMPORARY DITCH CHECKS
- PERIMETER EROSION CONTROL BARRIER
- EROSION CONTROL BLANKET

LEGEND

- ① FABRIC FORMED CONCRETE REVETMENT MAT
- ② AGGREGATE BASE COURSE
- ③ BITUMINOUS BASE COURSE
- ④ BITUMINOUS CONCRETE BASE COURSE WIDENING
- ⑤ AGGREGATE SURFACE COURSE
- ⑥ LEVELING BINDER (mm)
- ⑦ BITUMINOUS CONCRETE BINDER COURSE
- ⑧ BITUMINOUS CONCRETE SURFACE COURSE
- ⑨ BITUMINOUS SURFACE REMOVAL-BUTT JOINT
- ⑩ BITUMINOUS CONCRETE PAVEMENT (FULL-DEPTH)
- ⑪ PORTLAND CEMENT CONC. PAVEMENT SPECIAL W/INTEGRAL CURB
- ⑫ PORTLAND CEMENT CONCRETE SIDEWALK
- ⑬ BITUMINOUS SURFACE REMOVAL-VAR. DEPTH
- ⑭ AGGREGATE SHOULDERS
- ⑮ BITUMINOUS SHOULDERS
- ⑯ COMBINATION CONCRETE CURB AND GUTTER
- ⑰ CONCRETE MEDIAN TYPE SB 15.60



REVISIONS	
NAME	DATE

ILLINOIS DEPARTMENT OF TRANSPORTATION  
**PLAN AND PROFILE**  
**ILLINOIS ROUTE 40**  
 STA. 13+600 TO STA. 13+750  
 SCALE: 1:400 H / 1:40 V  
 DATE: 09/10/06  
 DRAWN BY: JDU  
 CHECKED BY: ECM