

T.B.M. "25" - N'LY CAP BOLT FIRE HYD.
 STA. 13+864±, 22m± RT.
 ELEV. = 242.505

STA. 13+768
 37m P CUL 1 RC-E ERS 900
 PRCF END SECTIONS
 U.S.F.L. = 240.43
 D.S.F.L. = 239.94

SEC. 32, T. 10N., R. 8E., 4th P.M.

UNIT DUCT, 2 #6 XLP, 1 #6 BARE GROUND 25mm POLYETHYLENE — 56.0 m
 TRENCH AND BACKFILL FOR ELECTRICAL WORK — 54.0 m
 RELOCATE EXISTING LIGHTING UNIT 20.5 M RT. STA. 13+804 — 1 EACH

RTE NO.	SECTION	COUNTY	TOTAL	SHEET #
FA 646	(Y)W-1, RS-3	PEORIA	142	63
STATION 13+750 TO STATION 14+000				

STA. 13+855.007 TO
 STA. 13+863.924
 LT. EDGE OF PAVEMENT
 $\Delta = 0^{\circ}09'09''$ (RT.)
 R = 3340.468 m
 T = 4.443 m
 L = 8.887 m

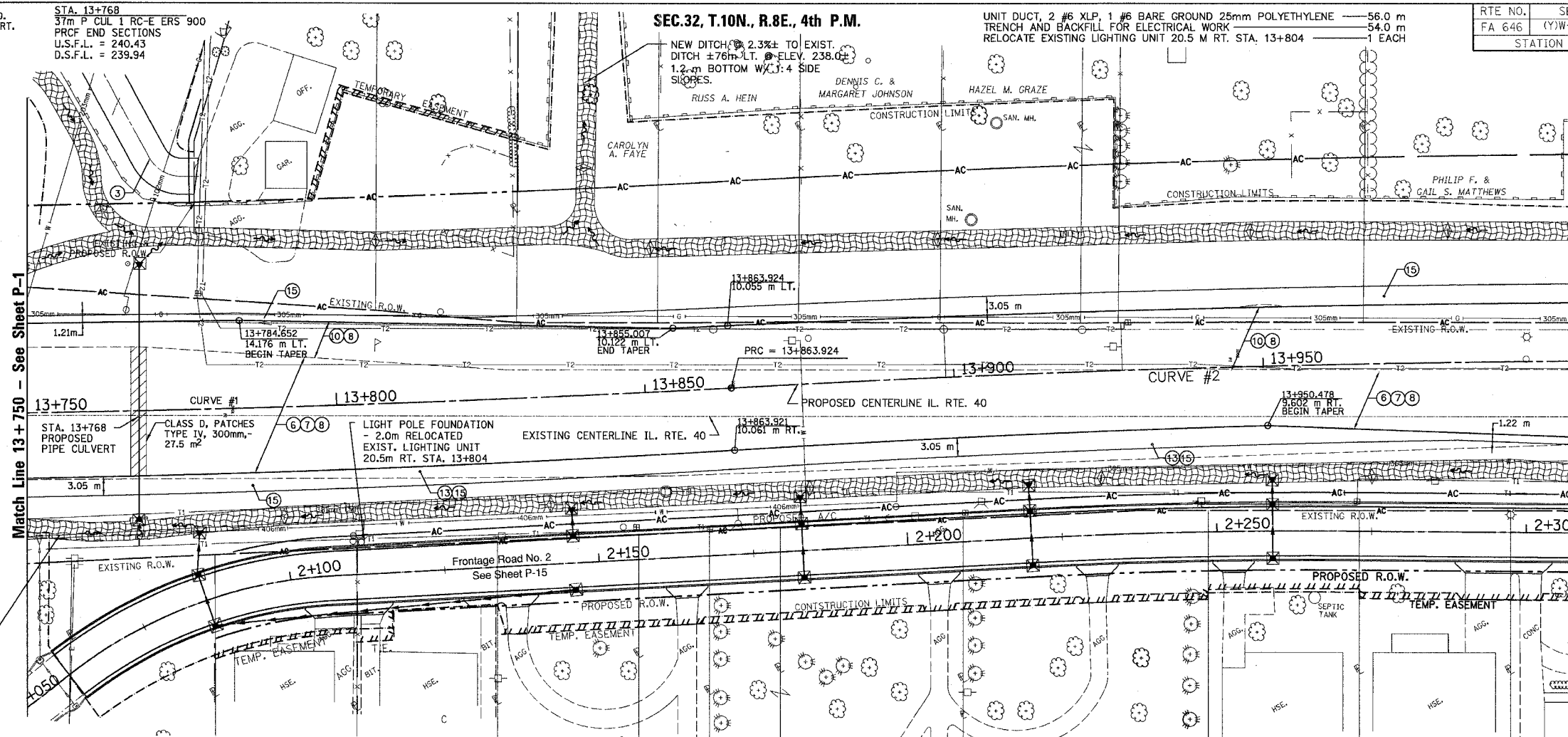
STA. 13+749.795 TO
 STA. 13+863.924
 RT. EDGE OF PAVEMENT
 $\Delta = 02^{\circ}34'05''$ (LT.)
 R = 2555.529 m
 T = 57.278 m
 L = 114.537 m

IL. RTE. 40
 CENTERLINE CURVE DATA
 CURVE #2

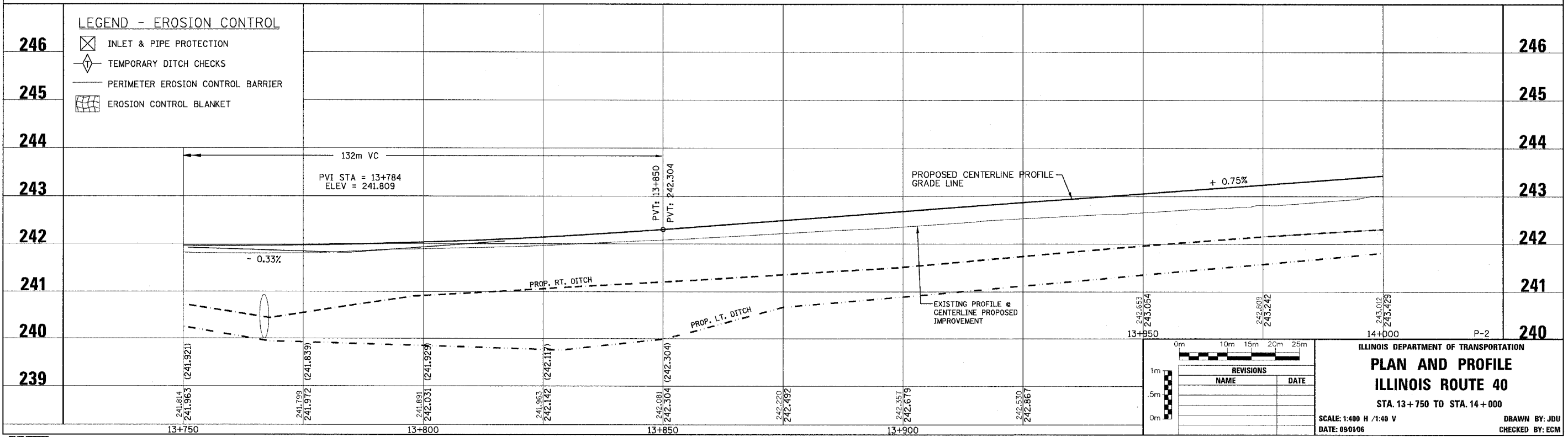
PI STA 13+945.315
 PRC STA 13+863.924
 PT STA 14+026.663
 $\Delta = 03^{\circ}13'13''$ (RT.)
 R = 2895.600 m
 T = 81.391 m
 L = 162.739 m
 $e = N/A$

STA. 13+863.924 TO
 STA. 14+026.663
 LT. EDGE OF PAVEMENT
 $\Delta = 02^{\circ}47'59''$ (RT.)
 R = 3340.468 m
 T = 81.635 m
 L = 163.327 m

STA. 13+863.924 TO
 STA. 13+950.478
 RT. EDGE OF PAVEMENT
 $\Delta = 01^{\circ}56'03''$ (RT.)
 R = 2555.529 m
 T = 43.137 m
 L = 86.265 m



- LEGEND**
- ① FABRIC FORMED CONCRETE REVEMENT MAT
 - ② AGGREGATE BASE COURSE
 - ③ BITUMINOUS BASE COURSE
 - ④ BITUMINOUS CONCRETE BASE COURSE WIDENING
 - ⑤ AGGREGATE SURFACE COURSE
 - ⑥ LEVELING BINDER (mm)
 - ⑦ BITUMINOUS CONCRETE BINDER COURSE
 - ⑧ BITUMINOUS CONCRETE SURFACE COURSE
 - ⑨ BITUMINOUS SURFACE REMOVAL—BUTT JOINT
 - ⑩ BITUMINOUS CONCRETE PAVEMENT (FULL—DEPTH)
 - ⑪ PORTLAND CEMENT CONC. PAVEMENT SPECIAL W/INTEGRAL CURB
 - ⑫ PORTLAND CEMENT CONCRETE SIDEWALK
 - ⑬ BITUMINOUS SURFACE REMOVAL—VAR. DEPTH
 - ⑭ AGGREGATE SHOULDERS
 - ⑮ BITUMINOUS SHOULDERS
 - ⑯ COMBINATION CONCRETE CURB AND GUTTER
 - ⑰ CONCRETE MEDIAN TYPE SB 15.60



REVISIONS	NAME	DATE

ILLINOIS DEPARTMENT OF TRANSPORTATION
PLAN AND PROFILE
ILLINOIS ROUTE 40
 STA. 13+750 TO STA. 14+000
 SCALE: 1:400 H / 1:40 V
 DATE: 09/10/06
 DRAWN BY: JDU
 CHECKED BY: ECM