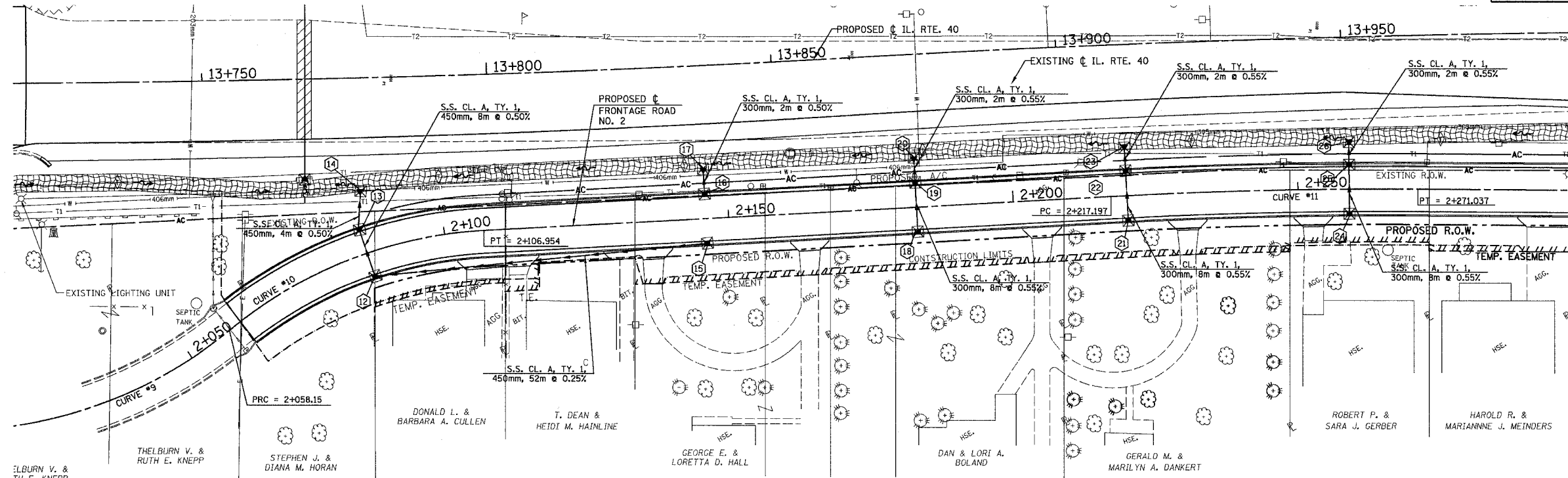


T.B.M. "25" - NLY CAP BOLT FIRE HYD.
 STA. 13+964±, 22m± RT.
 ELEV. = 242.505

SEC.32, T.10N., R.8E., 4th P.M.

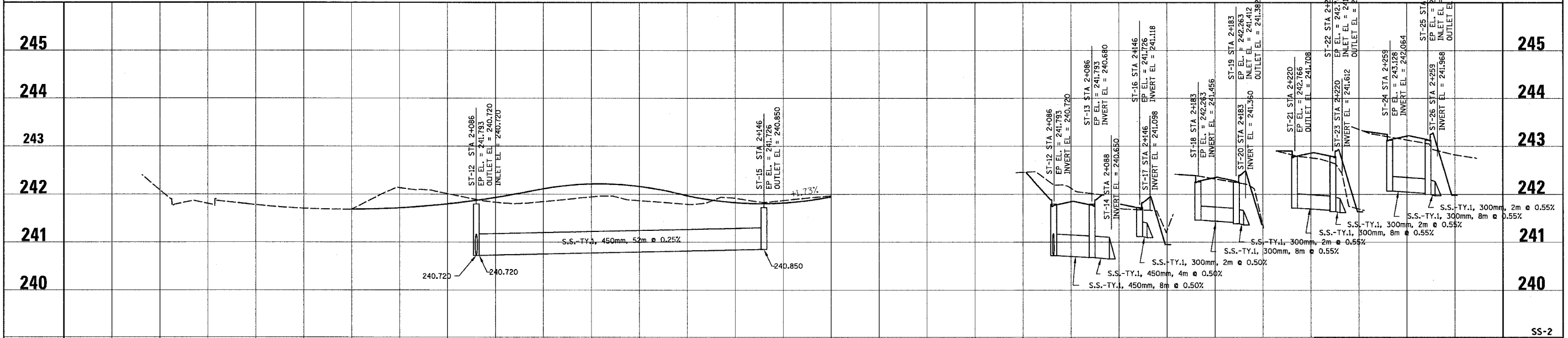
RTE NO.	SECTION	COUNTY	TOTAL	SHEET #
FA 646	(Y)W-1, RS-3	PEORIA	142	77
STATION 2+030 TO STATION 2+300				



Match line 2+300 - See Sheet SS-3

- 12 INLET, TYPE G-1 (R)
 STA. 2+086, 3.96m RT.
 E.P. EL. = 241.793
 INLET EL. = 240.720
 OUTLET EL. = 240.720
- 13 INLET, TYPE G-1 (L)
 STA. 2+086, 3.96m LT.
 E.P. EL. = 241.793
 OUTLET EL. = 240.680
 INLET EL. = 240.680
- 14 P.R.C. FLARED END SECT. 450
 STA. 2+088, 10.5m LT.
 INV. EL. = 240.650
- 15 INLET, TYPE G-1 (L)
 STA. 2+146, 3.96m RT.
 E.P. EL. = 241.726
 OUTLET EL. = 241.850
- 16 INLET, TYPE G-1 (R)
 STA. 2+146, 3.96m LT.
 E.P. EL. = 241.726
 OUTLET EL. = 241.118
- 17 P.R.C. FLARED END SECT. 300
 STA. 2+146, 9.0m LT.
 INV. EL. = 241.098
- 18 INLET, TYPE G-1 (R)
 STA. 2+183, 3.96m RT.
 E.P. EL. = 242.263
 OUTLET EL. = 241.456
- 19 INLET, TYPE G-1 (L)
 STA. 2+183, 3.96m LT.
 E.P. EL. = 242.263
 OUTLET EL. = 241.382
 INLET EL. = 241.412
- 20 P.R.C. FLARED END SECT. 300
 STA. 2+183, 9.0m LT.
 INV. EL. = 241.360
- 21 INLET, TYPE G-1 (R)
 STA. 2+220, 3.96m RT.
 E.P. EL. = 242.766
 OUTLET EL. = 241.708
- 22 INLET, TYPE G-1 (L)
 STA. 2+220, 3.96m LT.
 E.P. EL. = 242.766
 OUTLET EL. = 241.634
 INLET EL. = 241.664
- 23 P.R.C. FLARED END SECT. 300
 STA. 2+220, 9.0m LT.
 INV. EL. = 241.612
- 24 INLET, TYPE G-1 (R)
 STA. 2+259, 3.96m RT.
 E.P. EL. = 243.128
 OUTLET EL. = 242.064
- 25 INLET, TYPE G-1 (L)
 STA. 2+259, 3.96m LT.
 E.P. EL. = 243.128
 OUTLET EL. = 241.990
 INLET EL. = 242.020
- 26 P.R.C. FLARED END SECT. 300
 STA. 2+259, 8.5m LT.
 INV. EL. = 241.968

NOTE: ALL GRATES SHALL BE "CAST DIAGONAL".
 THE DIRECTION OF FLOW IS INDICATED IN PARENTHESIS, IE (L) OR (R).



REVISIONS	
NAME	DATE

ILLINOIS DEPARTMENT OF TRANSPORTATION
**STORM SEWER
 PLAN AND PROFILE**
ILLINOIS ROUTE 40
 FRONTAGE RD. NO. 2

SCALE: 1:400 H / 1:40 V
 DATE: 09/10/06

DRAWN BY: JDU
 CHECKED BY: ECM